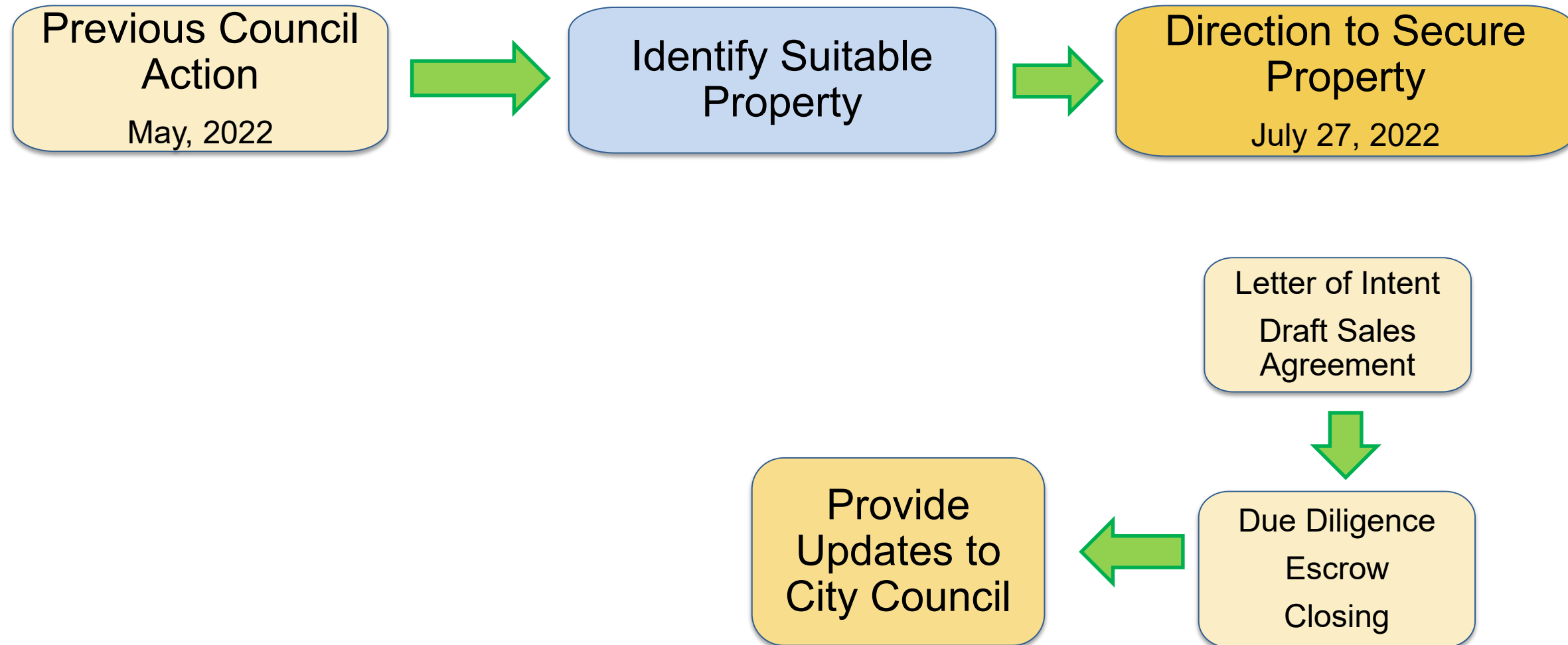


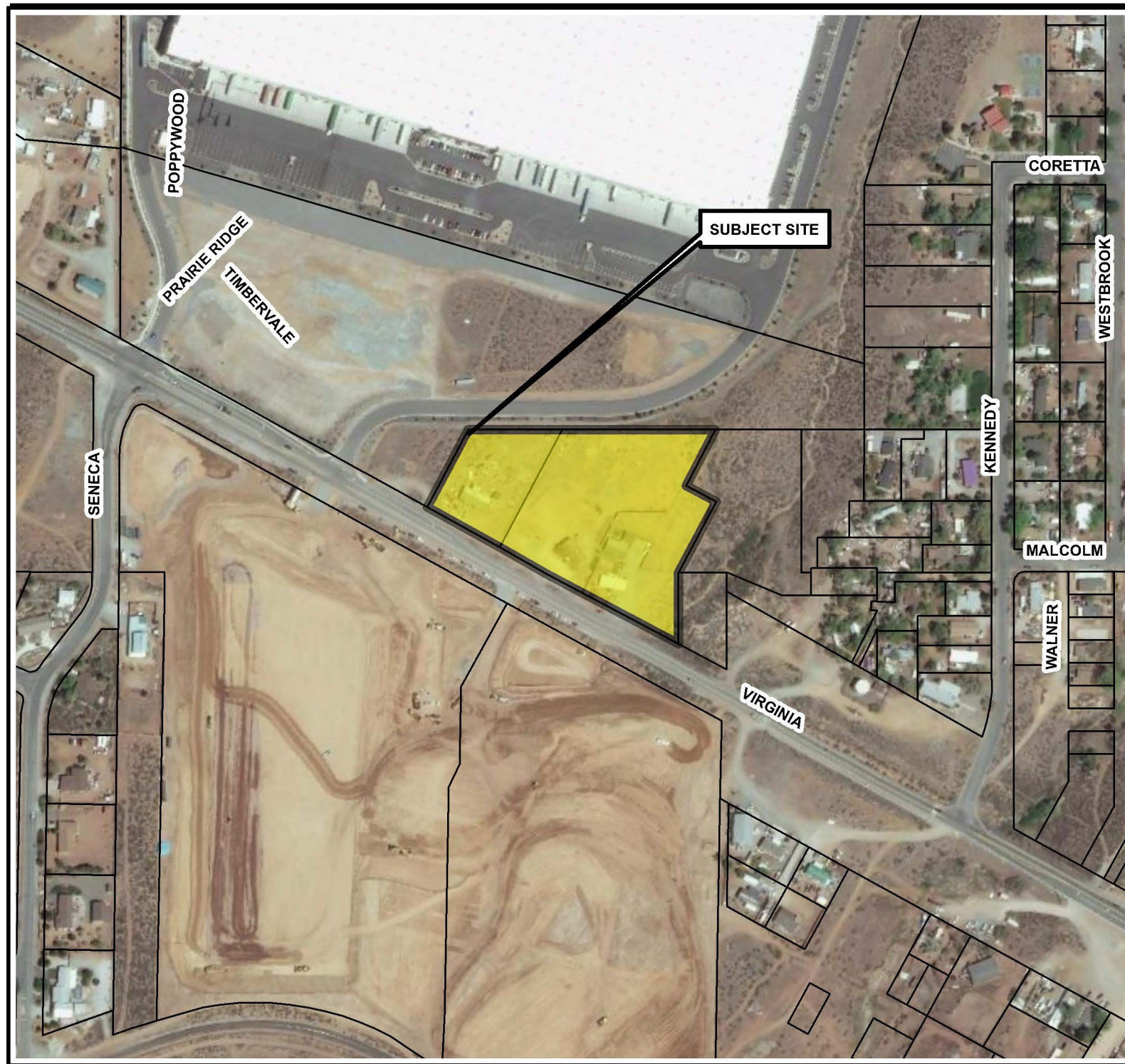
Satellite Facility Maintenance & Operations

*Reno City Council
July 27, 2022*



Timeline and Process

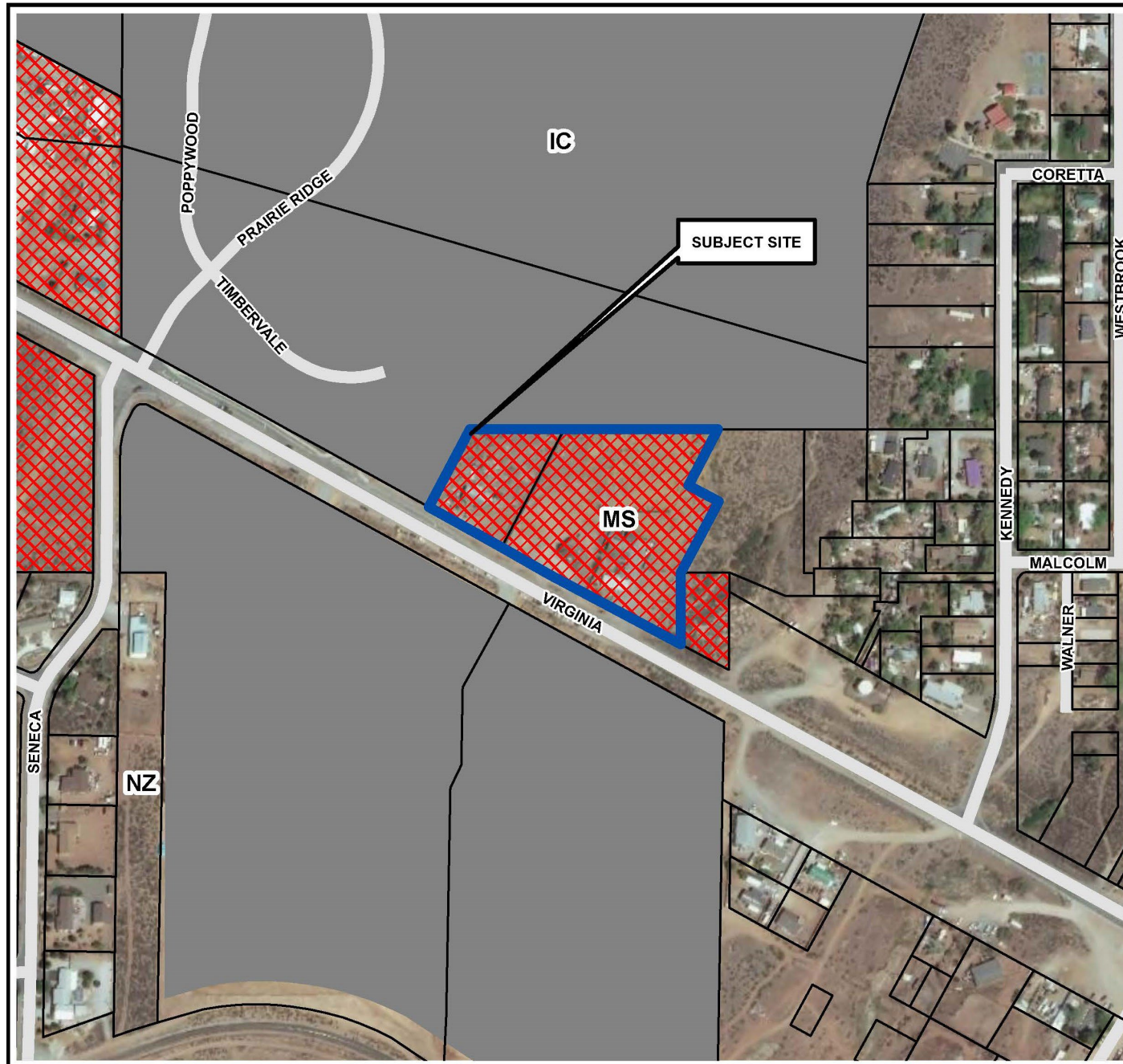




Property Information

Site Size: ±4.18 acres (two parcels)

- Existing Utilities and Access
- Topography Suitable for Development
- Centrally Located / Proximity to:
 - US Highway 395
 - Stead Blvd
 - Lemmon Drive
 - Red Rock Road



REIMAGINE RENO

planning for the future

Suburban Mixed Use

- 2.3A Capital Improvement Program
- 2.3F Cooperative Use

— ZONING CODE — RENOVATION

Achieving ReImagine Reno

Mixed Use Suburban

- Proximity to Industrial Commercial
- Compatible with Surrounding Uses

City of Reno Strategic Plan 2020-2025

Fiscal Sustainability

- Sustain, Manage and Fund Operations for the Long Term
- Align Resources to Focus on Priority Services

Infrastructure, Climate Change Sustainability

- Minimize the Environmental Impacts of Municipal Operations
- Plan and Prepare for Service Continuity and Community Resilience

Governance Organizational Effectiveness

- Promote Greater Efficiencies in Operations and Governance in Support



Recommended Motion

I move to authorize and direct the City Manager to negotiate and finalize the purchase and sale agreement based on the accepted terms within the Letters of Intent for the Mayor's signature and to take other action as necessary to purchase the parcels