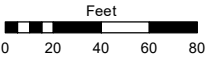
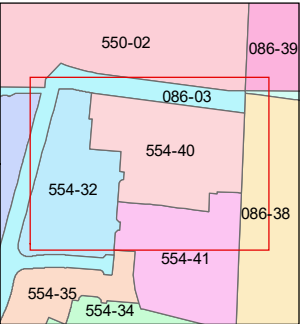
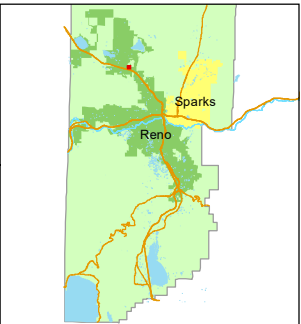


STATE OF NEVADA
WASHOE COUNTY
ASSESSOR'S OFFICE

1001 East Ninth Street, Building D
Reno, Nevada 89512
(775) 328-2231



1 inch = 80 feet



created by: SR 04/08/2020

updated: _____

area previously shown on map(s):

086-03

NOTE: This map was prepared for the use of the Washoe County Assessor for assessment and illustrative purposes only. It does not represent a survey of the premises. No liability is assumed as to the sufficiency or accuracy of the data delineated hereon.

(#5366)
SILVER DOLLAR ESTATES
AREA 2 - PHASE 2
PORTION OF THE NE ¼ OF SECTION 8
T20N - R19E

