

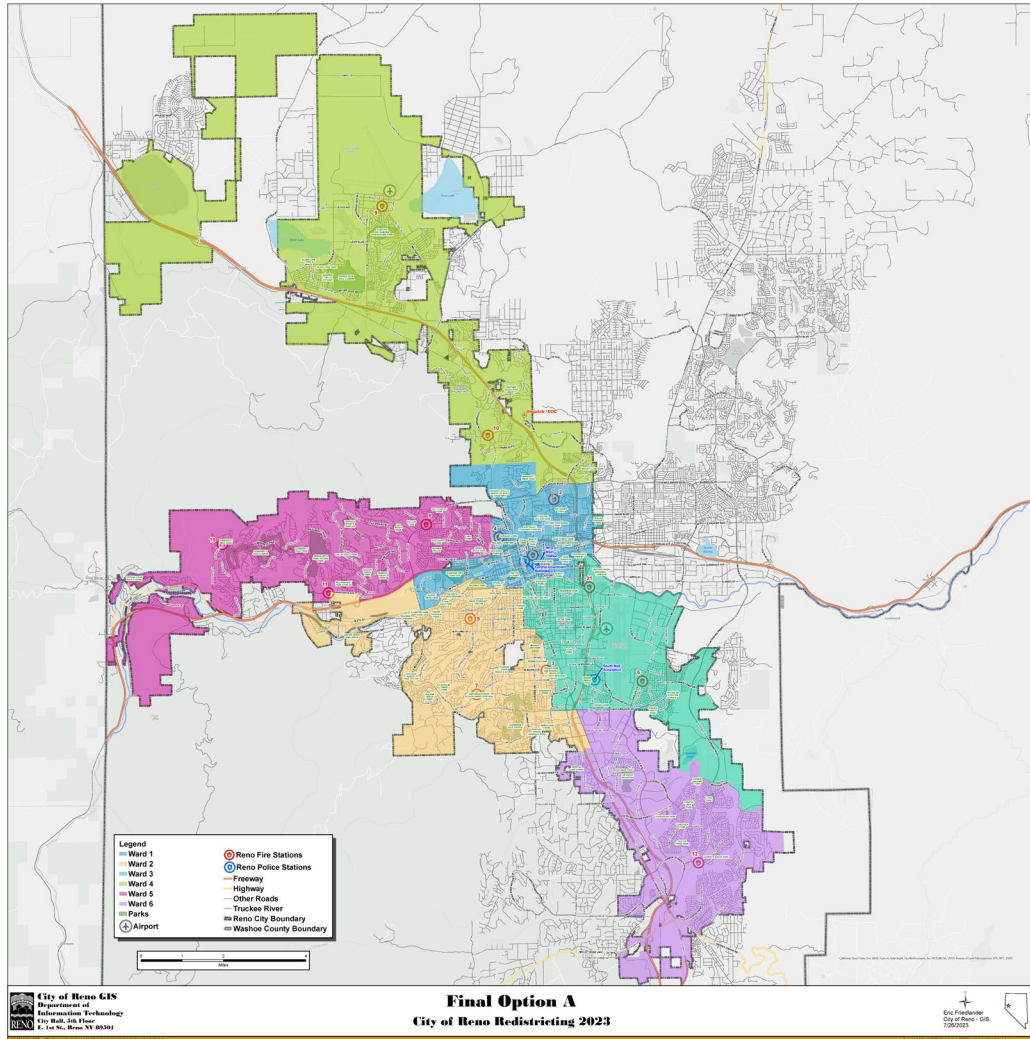
2023 Redistricting

Ordinance Introduction: August 23, 2023

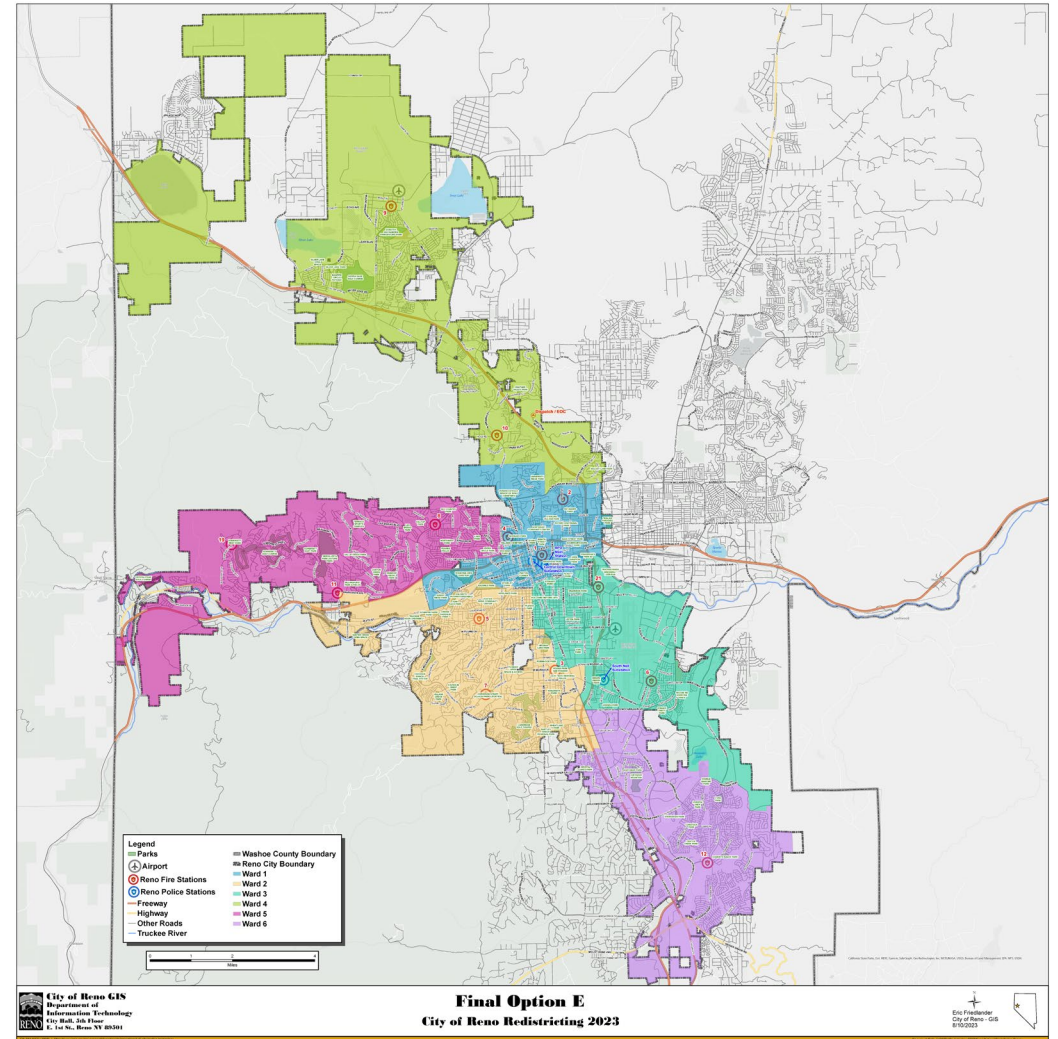


C I T Y O F
RENO

Final Map A

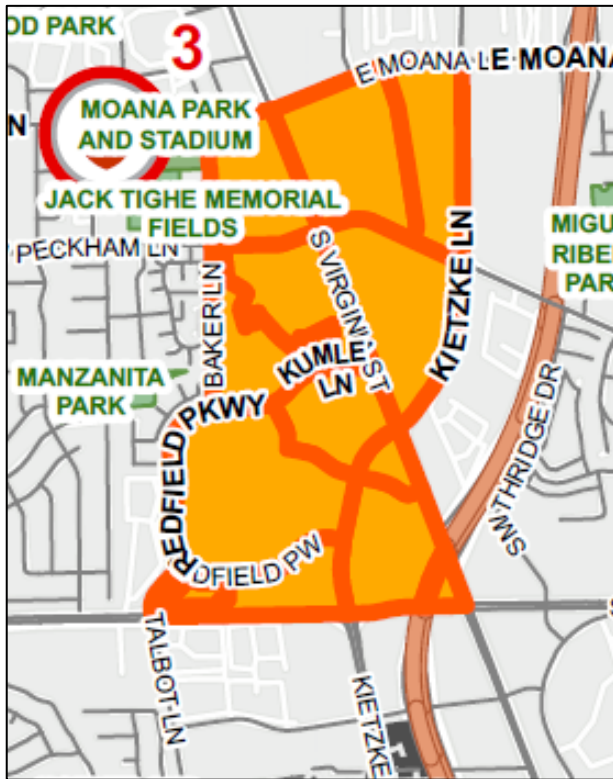


Final Map E

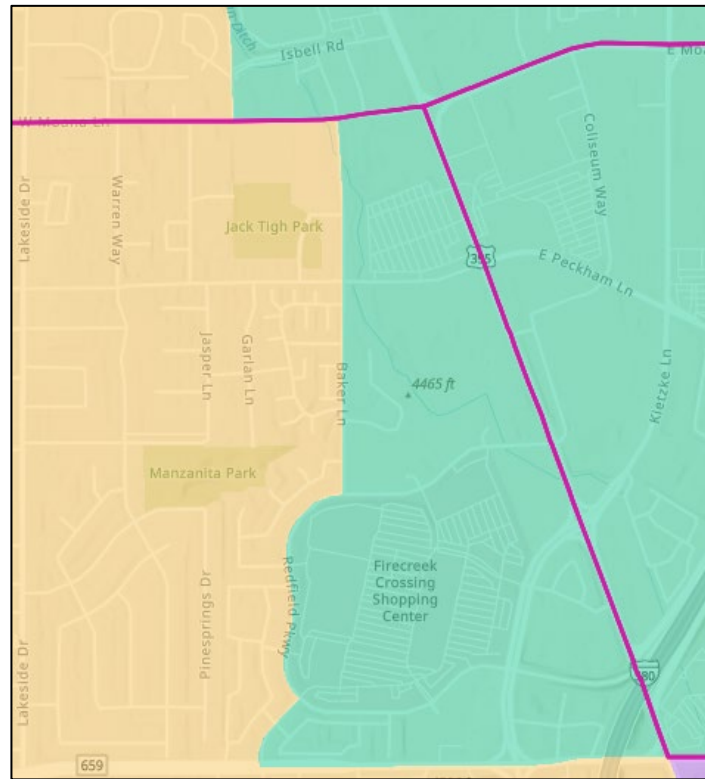


Change Area #1: Baker Lane

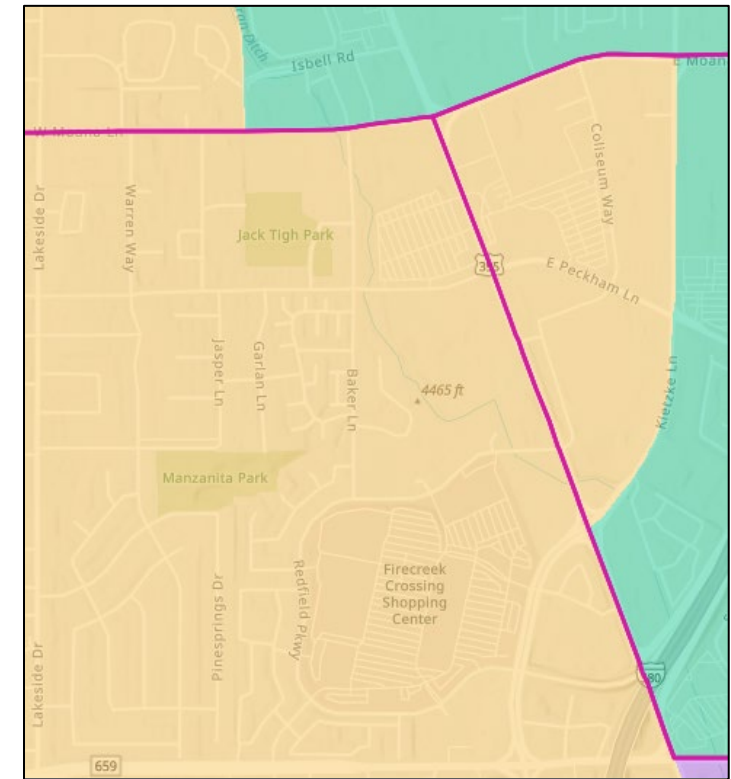
Changed Area



Final Map A

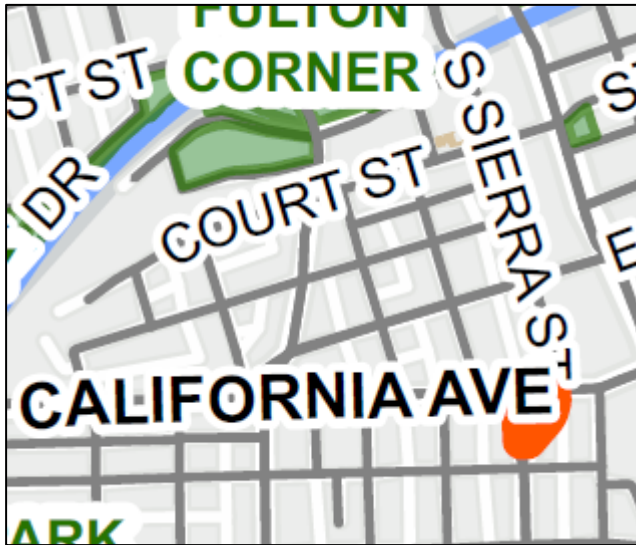


Final Map E

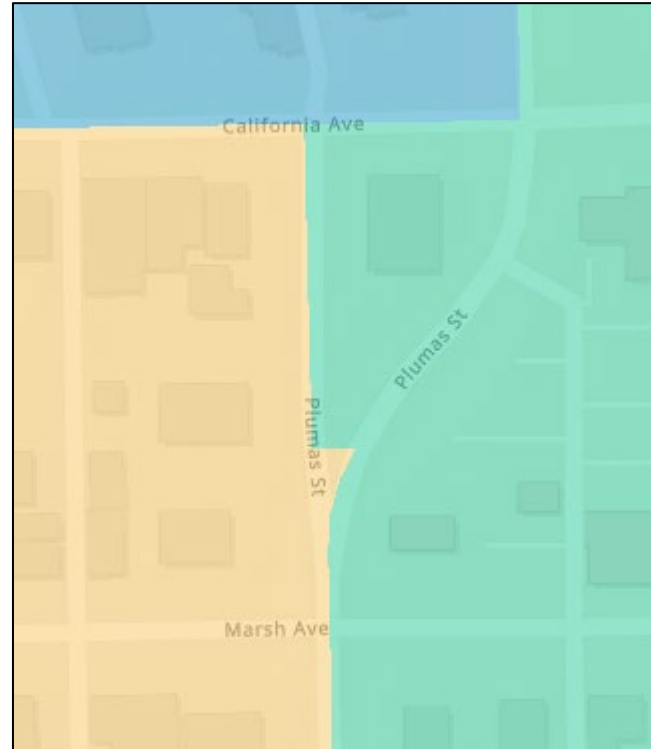


Change Area #2: Plumas/California

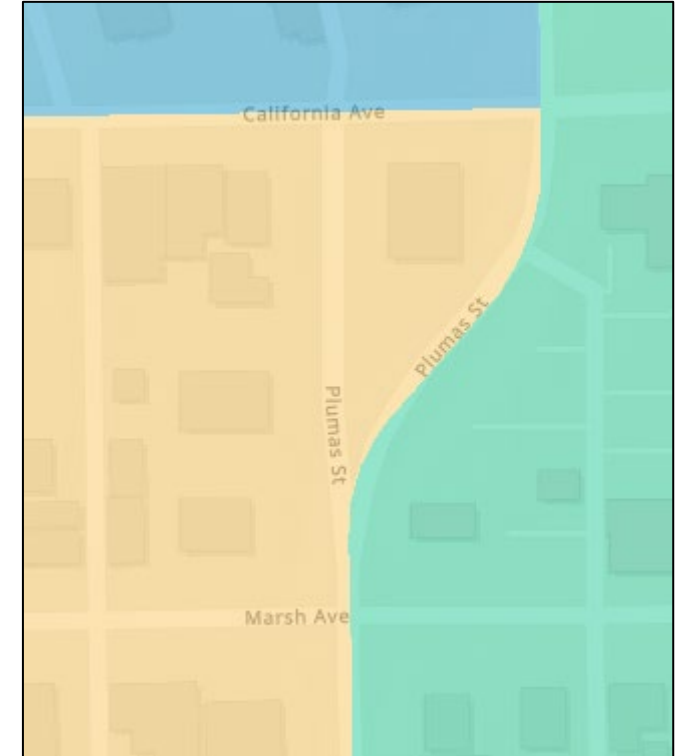
Changed Area



Final Map A

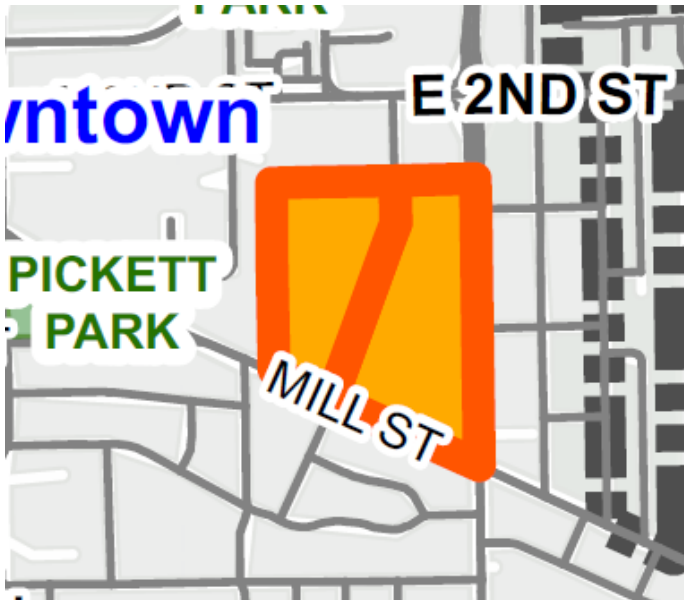


Final Map E

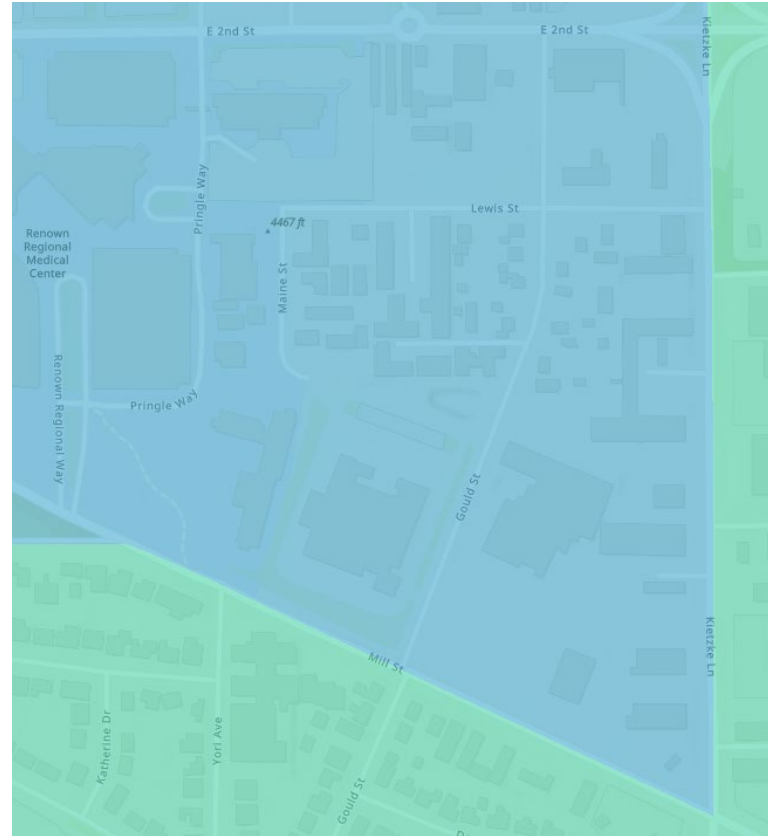


Change Area #3: Kietzke/Mill

Changed Area



Final Map A



Final Map E



Final Option E

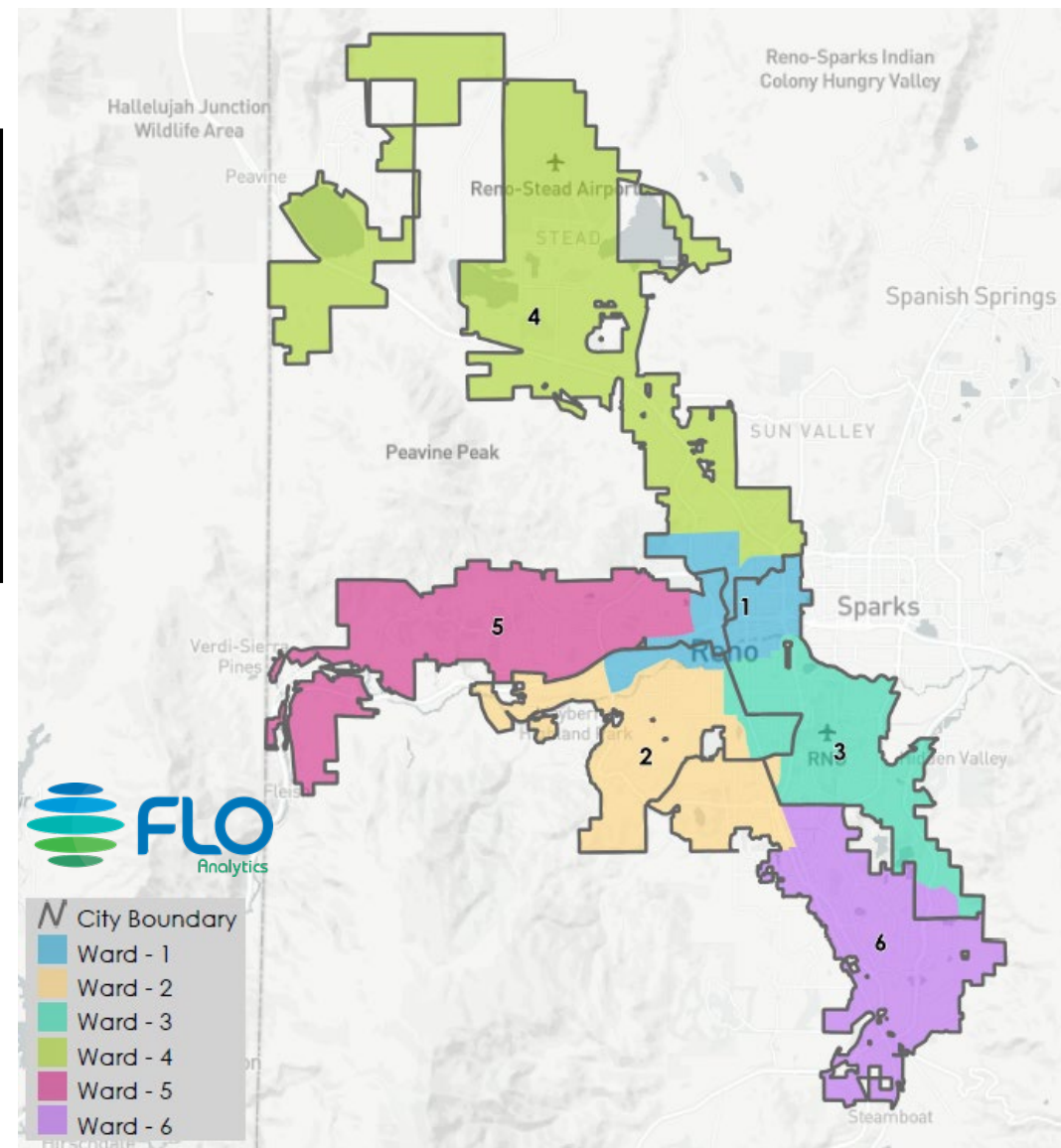
Total Population & Deviation per Ward

Ward	Total Population	Over / Under Ideal	Deviation From Ideal
1	44,740	713	1.6%
2	45,003	976	2.2%
3	43,140	-888	-2.0%
4	43,060	-968	-2.2%
5	44,356	329	0.7%
6	43,866	-162	-0.4%

**Overall
Deviation:
4.4%**

Total Population by Race/Ethnicity per Ward

Ward	White	Black or African American	American Indian or Alaska Native	Asian	Native Hawaiian and Pacific Islander	Some Other Race	Two or More Races	Hispanic/Latino
1	50.0%	5.5%	1.0%	7.2%	1.0%	0.7%	5.7%	28.9%
2	72.9%	1.6%	0.4%	5.1%	0.4%	0.5%	5.1%	13.9%
3	40.5%	3.4%	0.9%	5.7%	0.8%	0.6%	3.9%	44.2%
4	47.9%	3.0%	0.8%	5.8%	1.2%	0.5%	5.5%	35.2%
5	67.9%	1.8%	0.6%	7.9%	0.5%	0.5%	5.7%	15.1%
6	65.2%	1.9%	0.5%	9.9%	0.4%	0.4%	6.0%	15.7%



Final Phase: City Council Timeline



Motion

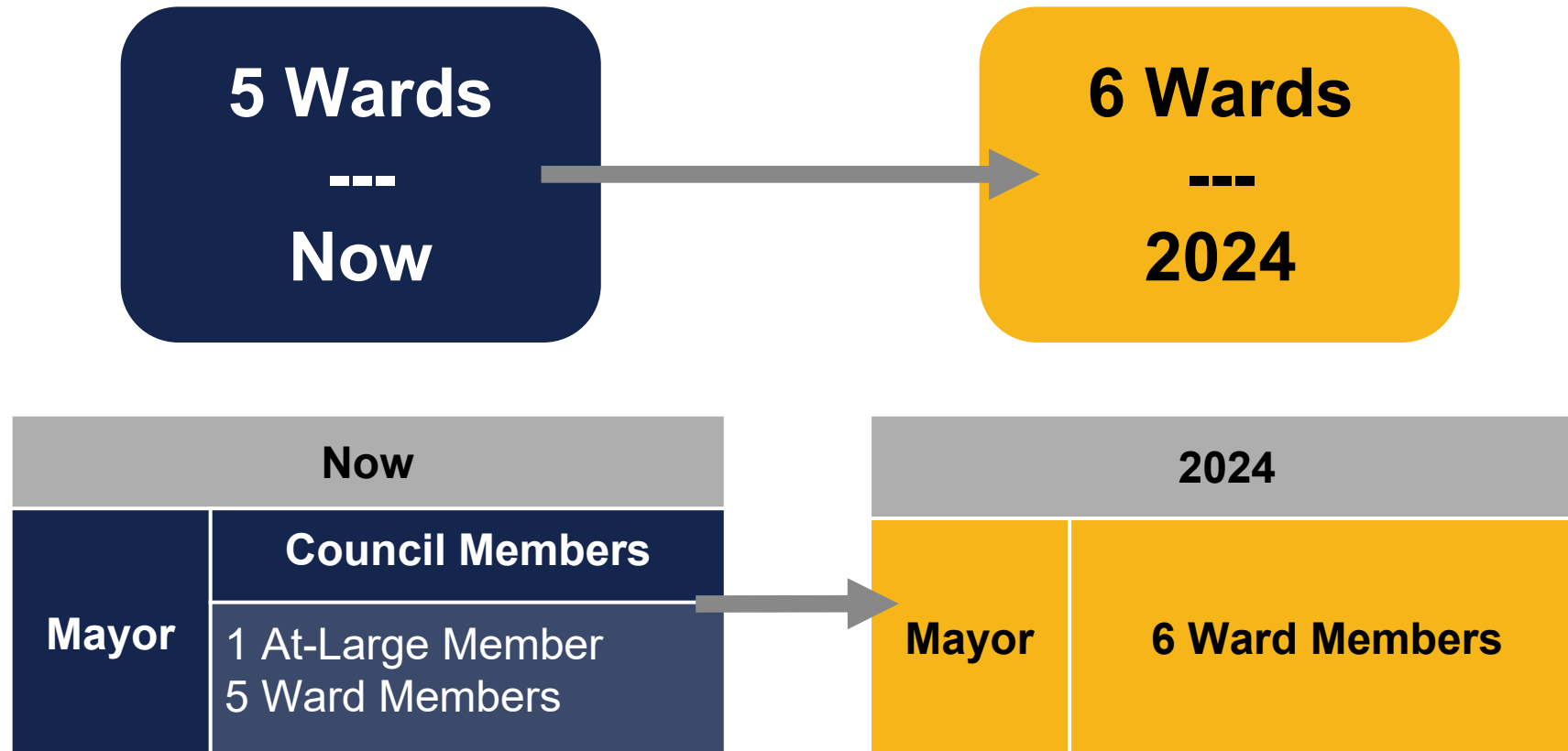
I move to select Final Map Option E and refer bill for second reading and adoption.

Background Slides if Needed

Issue	Description	OPTION A	OPTION B.1	OPTION C	OPTION D.1	OPTION E
Population	Required less than 5% deviation	4.9%	3.6%	3.4%	2.2%	4.4%
Downtown	Representation model	1 Ward	Multiple Wards	1 Ward	1 Ward	1 Ward
University & Neighborhoods	Connects to the north, south, east, and west	4 of 4	3 of 4	3 of 4	3 of 4	4 of 4
Communities of Interest	Donner Springs/Mira Loma/ Neil Rd	★	✖	✖	★	★
	Midtown	★	★	✖	★	★
	Old Southwest	✖	★	✖	★	✖
	Virginia Lake	✖	★	★	★	✖
	Yori/Grove and Brinkby/Lymbery	★	★	★	✖	★
	Northeast Neighborhood & E. 4 th	★	✖	★	✖	★
	Lakeridge/Rancharrah/Del Monte	★	✖	★	✖	★
	Double Diamond/Bella Vista/Damonte	★	★	✖	★	★
	Robb/Mae Anne area north of I-80	✖	★	★	★	✖

Redistricting:

Process of redrawing the boundaries of the wards that make up the City of Reno



Ward Transition Timeline: 2024 General Election



Redistricting Process
May 2023 - August 2023



Maps to Registrar of Voters
September 1, 2023



Election Preparation
September 2023 - March 2024



Candidate Filing
March 2024



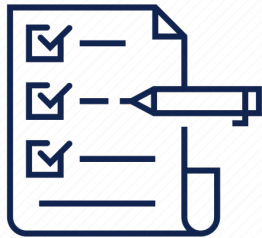
General Election
November 2024



Ward 6 Council Member
After General Election, 2024

Reno's Redistricting Approach

Guiding
Principles

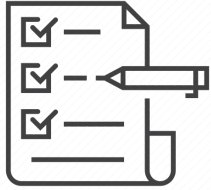


Data &
Analysis



Outreach &
Engagement





Redistricting Principles

The “Musts”

Must be in compliance with all local, state, and federal laws, including the Voting Rights Act

Must retain current Council members with existing terms that extend beyond the 2024 general election (*Wards 2 & 4*)

Must be “nearly equal in population”

Must solicit input from the community

Must be geographically contiguous

The 2020 Census **must** be used as the data source

The “Shoulds”

Should preserve neighborhood integrity

Should preserve the use of existing natural boundaries

***Should** be as compact as possible

Public Input Process

Phase 1: Communities of Interest <i>June 1 - June 27</i>	110 District Maps Submitted	Over 200 Public Input Comments	133 Draft Map Surveys
Phase 2: Draft Scenarios (6) <i>June 27 - July 14</i>	3 Community Meetings	6 Drop In Locations	89,871 People Reached via Social Media
Phase 3: Final Maps (4) <i>July 27 - August 23</i>	5 eNewsletters to over 23,000 Subscribers	1 Bilingual Citywide Mailer to 154,000+ Addresses	4 Press Releases in English & Spanish

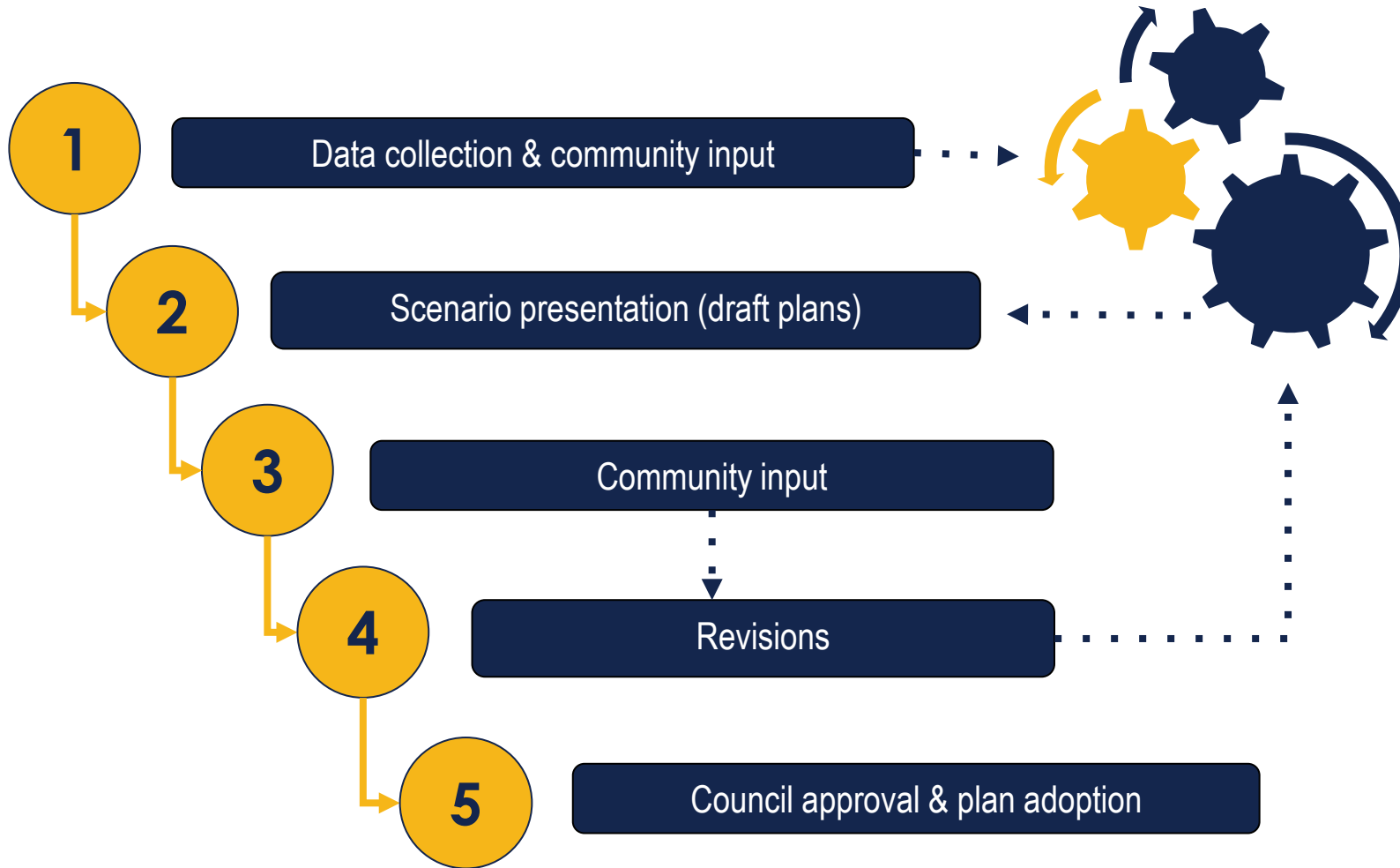


Community Key Issues

- Priority for visual compactness of wards
- Downtown representation
 - One ward vs multiple wards
 - Which way should downtown “stretch?”
- University
 - Connections to the north, south, east, and west
- Continued comments on communities of interest and neighborhoods
 - Similar needs and issues throughout ward
 - Expanded beyond individual neighborhoods

Draft Scenario Survey Ratings Ranked High to Low	
Draft Map	Median Score
Scenario 5	4
Scenario 6	4
Scenario 1	3.5
Scenario 2	2
Scenario 3	1
Scenario 4	1

Iterative Process



This process is designed so that everyone's voice can be heard and the deadline for the new maps can be met.



Redistricting Analysis

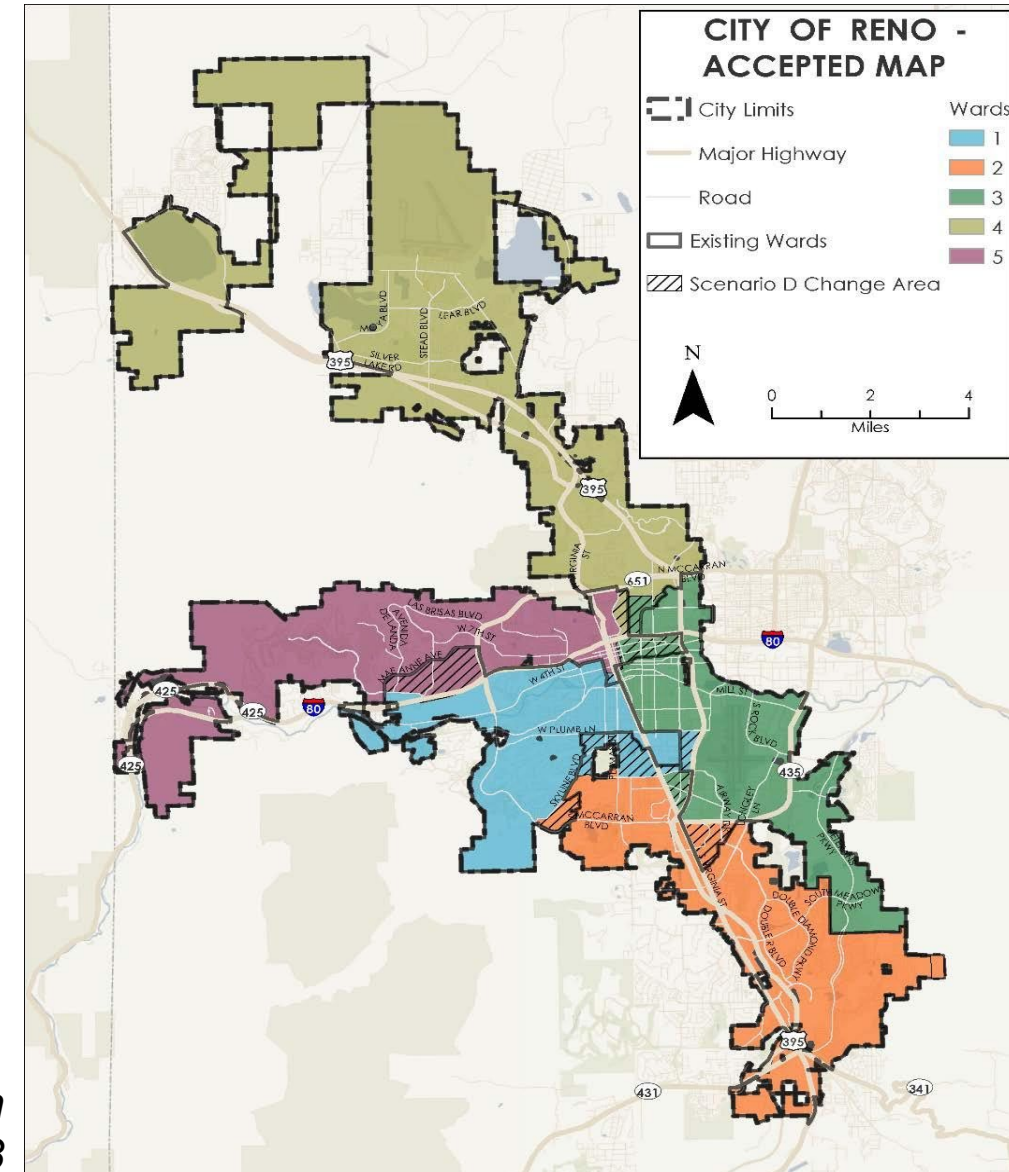
Total City Population: 264,165

Ideal or “target” ward population to be population balanced

6 Wards

44,027

*Ideal ward population with
5 wards: 53,833*



Final Option A

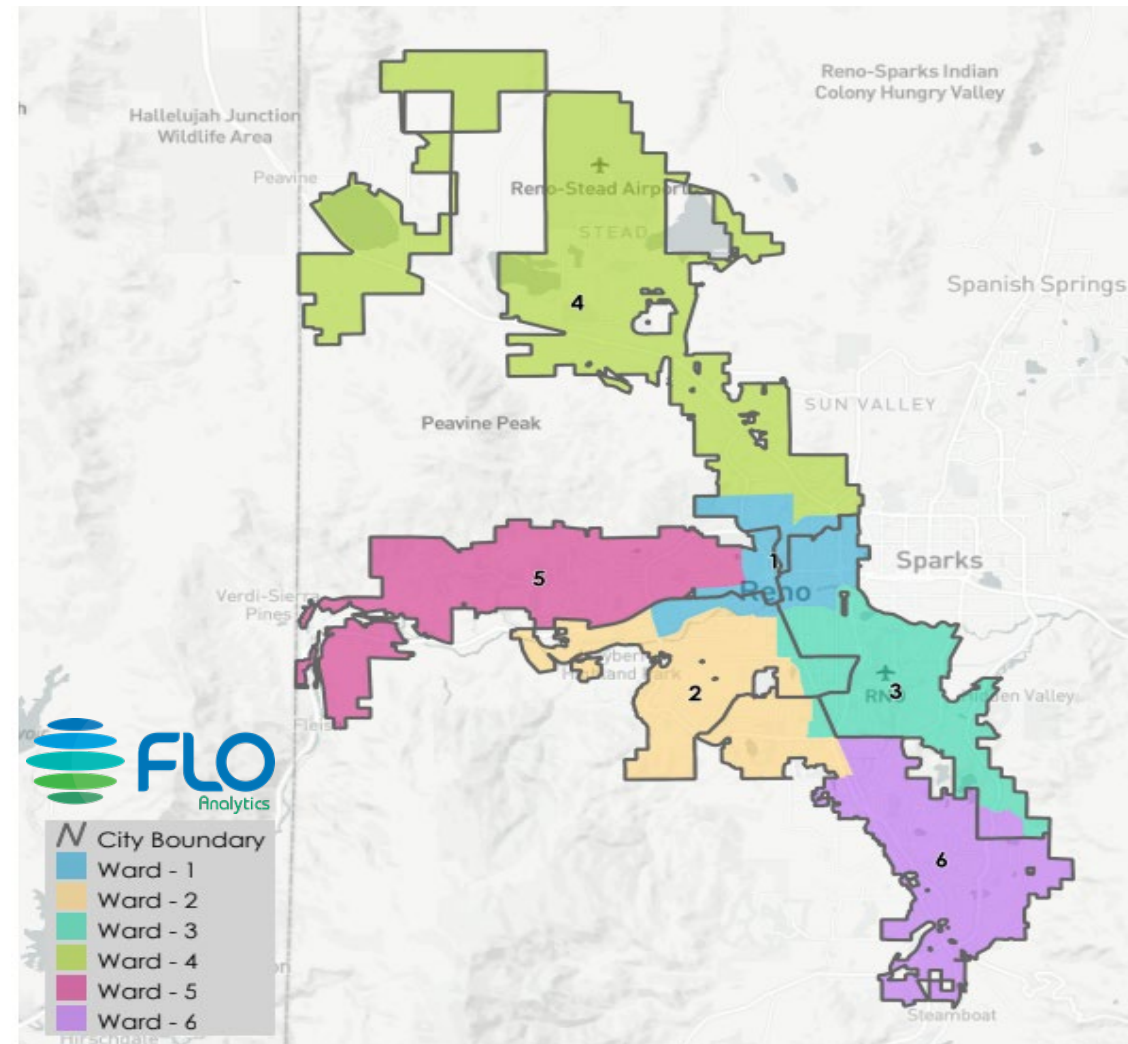
Total Population & Deviation per Ward

Ward	Total Population	Over / Under Ideal	Deviation From Ideal
1	45,202	1,175	2.7%
2	44,168	141	0.3%
3	43,513	-515	-1.2%
4	43,060	-968	-2.2%
5	44,356	329	0.7%
6	43,866	-162	-0.4%

**Overall
Deviation:
4.9%**

Total Population by Race/Ethnicity per Ward

Ward	White	Black or African American	American Indian or Alaska Native	Asian	Native Hawaiian and Pacific Islander	Some Other Race	Two or More Races	Hispanic/Latino
1	49.9%	5.4%	1.0%	7.1%	1.1%	0.7%	5.7%	29.0%
2	73.5%	1.6%	0.4%	5.0%	0.4%	0.5%	5.2%	13.4%
3	40.5%	3.4%	0.9%	5.9%	0.8%	0.6%	3.9%	44.1%
4	47.9%	3.0%	0.8%	5.8%	1.2%	0.5%	5.5%	35.2%
5	67.9%	1.8%	0.6%	7.9%	0.5%	0.5%	5.7%	15.1%
6	65.2%	1.9%	0.5%	9.9%	0.4%	0.4%	6.0%	15.7%



Final Option A

	Downtown	University	Communities of Interest
Includes	<p>Representation: 1 Ward</p> <ul style="list-style-type: none"> E. 4 Street Corridor Area east of downtown core and south of the river, to Liberty/Ryland/Mill Northeast neighborhood University 	<ul style="list-style-type: none"> North: Talus/Socrates neighborhoods South: Student housing in downtown core East: Valley Road residential area West: Washington Street 	<ul style="list-style-type: none"> Donner Springs/ Mira Loma/Neil Road Midtown Yori/Grove & Brinkby/Lymbery Northeast Neighborhood & E. 4th Street Lakeridge/Rancharrah/ Del Monte Double Diamond/Bella Vista/Damonte Ranch
Does Not Include	<ul style="list-style-type: none"> Midtown 		<ul style="list-style-type: none"> Old Southwest (Plumas Street boundary) Virginia Lake Robb/Mae Anne north of I-80

Final Option B.1

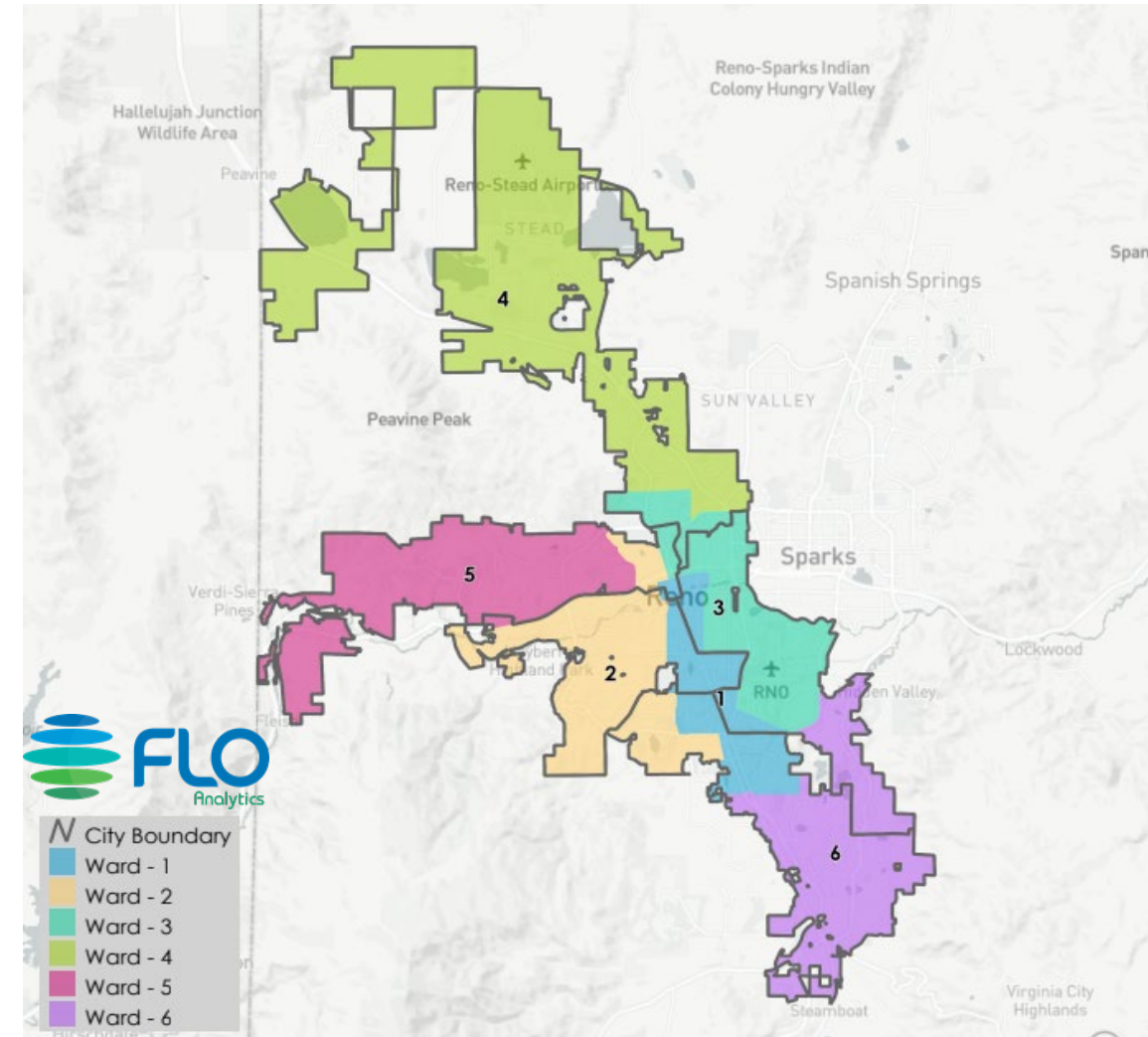
**Overall
Deviation:
3.6%**

Total Population & Deviation per Ward

Ward	Total Population	Over / Under Ideal	Deviation From Ideal
1	44,146	119	0.3%
2	44,163	136	0.3%
3	44,656	629	1.4%
4	43,060	-968	-2.2%
5	44,035	8	0.0%
6	44,105	78	0.2%

Total Population by Race/Ethnicity per Ward

Ward	White	Black or African American	American Indian or Alaska Native	Asian	Native Hawaiian and Pacific Islander	Some Other Race	Two or More Races	Hispanic/Latino
1	48.8%	4.2%	0.9%	6.0%	0.8%	0.7%	4.7%	33.9%
2	74.4%	1.6%	0.5%	5.0%	0.2%	0.5%	5.5%	12.3%
3	41.3%	4.8%	0.9%	7.0%	1.2%	0.6%	4.7%	39.3%
4	47.9%	3.0%	0.8%	5.8%	1.2%	0.5%	5.5%	35.2%
5	67.3%	1.8%	0.6%	8.0%	0.6%	0.5%	5.8%	15.5%
6	65.4%	1.8%	0.5%	9.7%	0.4%	0.4%	5.9%	15.9%



Final Option B.1

	Downtown	University	Communities of Interest
Includes	<p>Representation: Multiple Wards</p> <ul style="list-style-type: none"> Wards 1, 2, and 3 converge at Sierra and 6th Street <p>One of those ward connected to:</p> <ul style="list-style-type: none"> E. 4 Street Corridor Area east of downtown core and south of the river Northeast neighborhood University Midtown 	<ul style="list-style-type: none"> North: Talus/Socrates neighborhoods South: Student housing in downtown core, up to 6th Street East: Valley Road residential area 	<ul style="list-style-type: none"> Midtown Old Southwest Virginia Lake Yori/Grove & Brinkby/Lymberry Double Diamond/Bella Vista/Damonte Ranch Robb/Mae Anne north of I-80
Does Not Include	<ul style="list-style-type: none"> Cohesion across the various connecting neighborhoods 	<ul style="list-style-type: none"> West: Ward with university does not connect to residential area west of Sierra Street 	<ul style="list-style-type: none"> Donner Springs/ Mira Loma/Neil Road Northeast Neighborhood & E. 4th Street Lakeridge/Rancharrah/ Del Monte

Final Option C

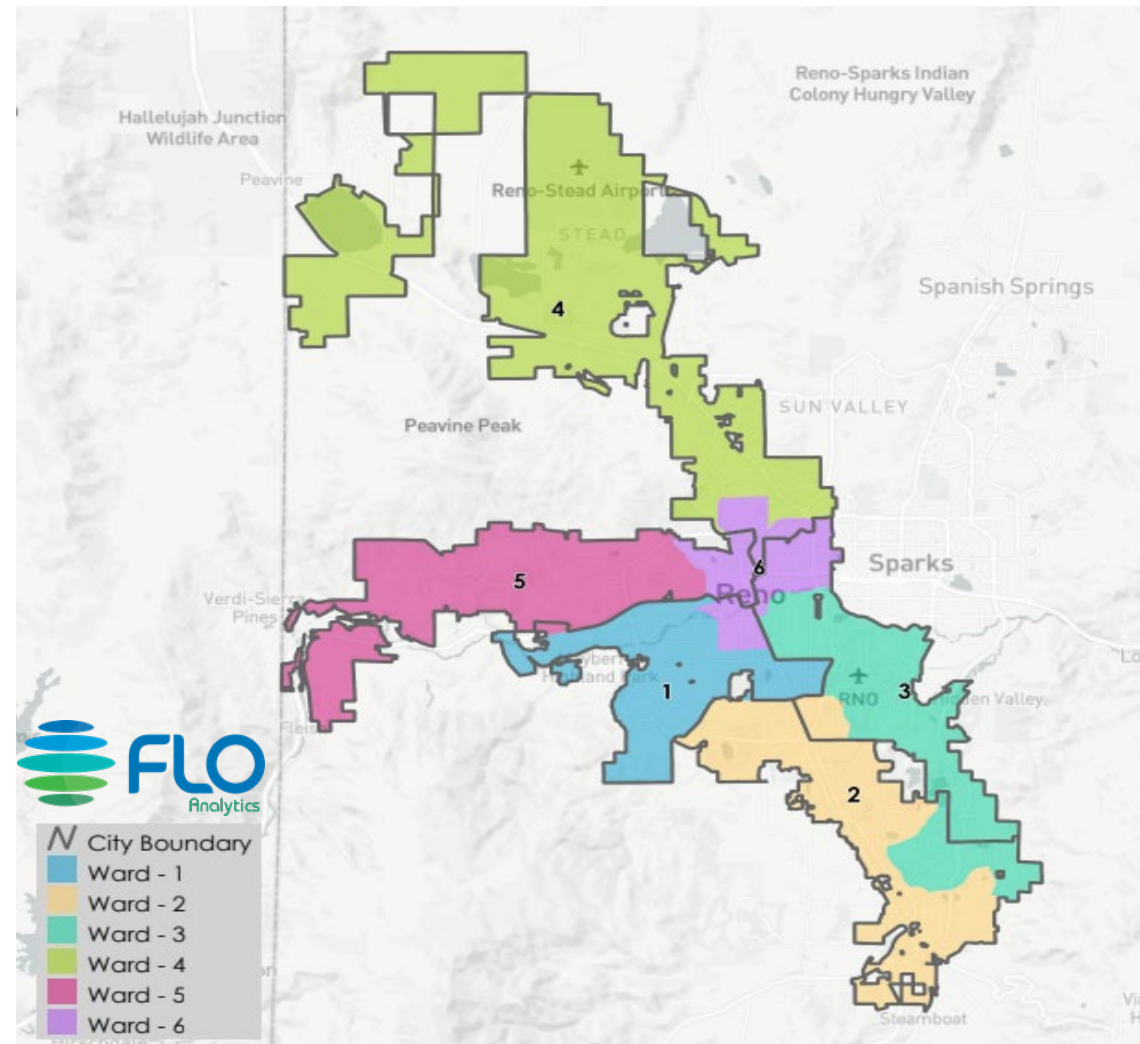
**Overall
Deviation:
3.4%**

Total Population & Deviation per Ward

Ward	Total Population	Over / Under Ideal	Deviation From Ideal
1	43,859	-169	-0.4%
2	44,816	789	1.8%
3	43,339	-689	-1.6%
4	44,545	518	1.2%
5	44,035	8	0.0%
6	43,571	-457	-1.0%

Total Population by Race/Ethnicity per Ward

Ward	White	Black or African American	American Indian or Alaska Native	Asian	Native Hawaiian and Pacific Islander	Some Other Race	Two or More Races	Hispanic/Latino
1	60.1%	2.6%	0.6%	4.8%	0.6%	0.5%	4.9%	25.9%
2	58.7%	2.6%	0.6%	7.9%	0.4%	0.5%	5.2%	24.2%
3	58.1%	2.2%	0.7%	8.2%	0.6%	0.6%	5.1%	24.5%
4	48.5%	3.1%	0.9%	5.8%	1.2%	0.5%	5.5%	34.6%
5	67.3%	1.8%	0.6%	8.0%	0.6%	0.5%	5.8%	15.5%
6	52.6%	5.0%	0.9%	6.9%	1.0%	0.6%	5.5%	27.4%



Final Option C

	Downtown	University	Communities of Interest
Includes	<p>Representation: 1 Ward</p> <ul style="list-style-type: none"> E. 4th Street corridor Truckee river as a portion of the southeast boundary Portion of Midtown Northeast neighborhood University 	<ul style="list-style-type: none"> North: Socrates South: Student housing in downtown core East: Valley Road residential area West: Keystone Ave 	<ul style="list-style-type: none"> Virginia Lake Yori/Grove and Brinkby/Lymberry Northeast Neighborhood & E. 4th Street Lakeridge/Rancharrah/Del Monte Robb/Mae Anne area north of I-80
Does Not Include	<ul style="list-style-type: none"> Entirety Midtown 	<ul style="list-style-type: none"> West: Talus Way 	<ul style="list-style-type: none"> Donner Springs/Mira Loma/Neil Road Midtown Old Southwest Double Diamond/Bella Vista/Damonte

Final Option D.1

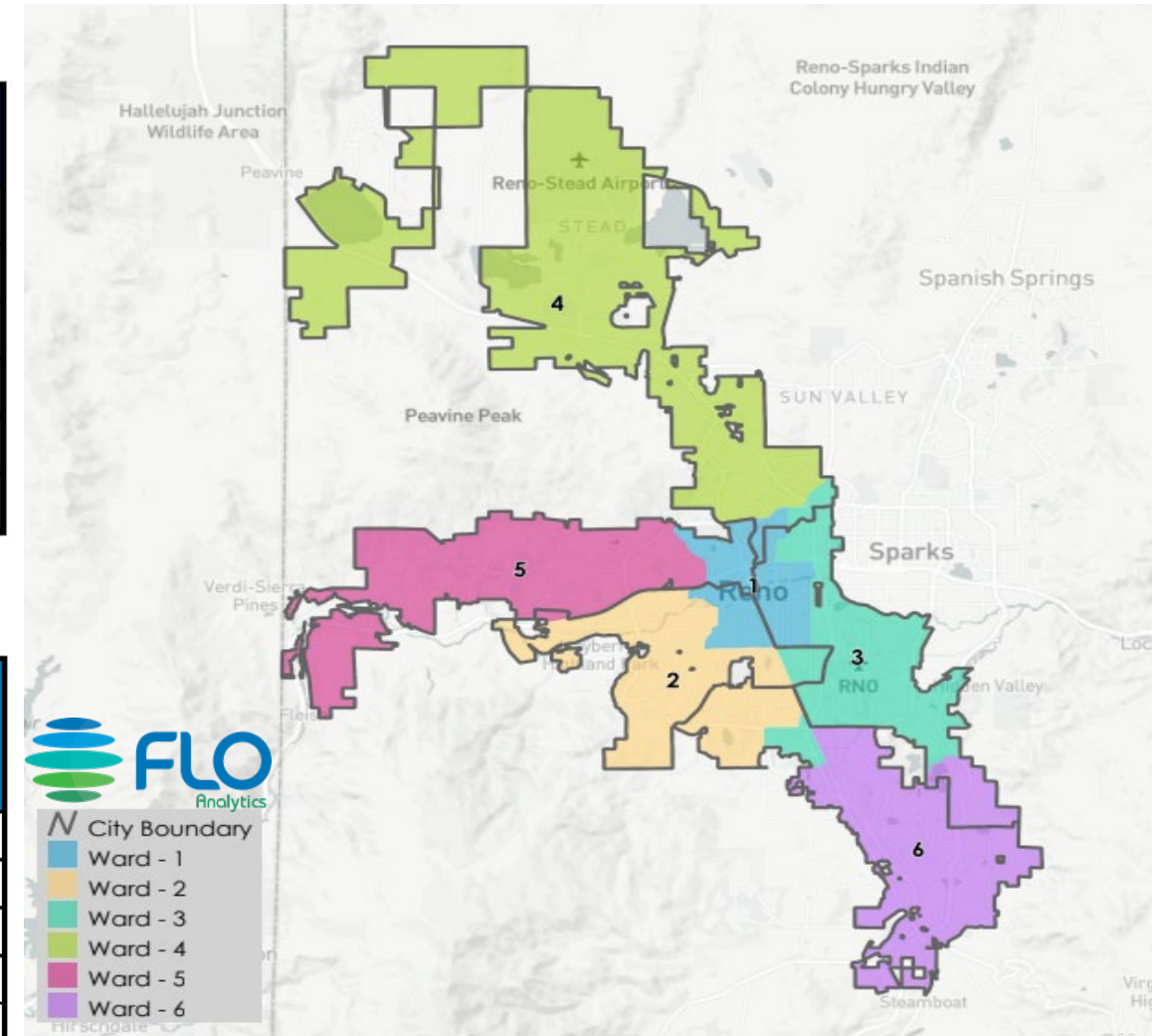
**Overall
Deviation:
2.2%**

Total Population & Deviation per Ward

Ward	Total Population	Over / Under Ideal	Deviation From Ideal
1	44,060	33	0.1%
2	44,164	137	0.3%
3	43,529	-499	-1.1%
4	44,499	472	1.1%
5	44,035	8	0.0%
6	43,878	-150	-0.3%

Total Population by Race/Ethnicity per Ward

Ward	White	Black or African American	American Indian or Alaska Native	Asian	Native Hawaiian and Pacific Islander	Some Other Race	Two or More Races	Hispanic/Latino
1	58.9%	4.2%	0.9%	6.2%	0.6%	0.7%	5.6%	22.7%
2	69.5%	2.1%	0.5%	5.5%	0.5%	0.5%	5.3%	16.0%
3	35.3%	4.1%	0.9%	6.0%	1.1%	0.4%	3.8%	48.3%
4	48.9%	3.0%	0.8%	6.0%	1.2%	0.5%	5.4%	34.1%
5	67.3%	1.8%	0.6%	8.0%	0.6%	0.5%	5.8%	15.5%
6	65.2%	1.9%	0.5%	9.8%	0.4%	0.4%	6.0%	15.7%



Final Option D.1

	Downtown	University	Communities of Interest
Includes	<ul style="list-style-type: none"> Area east of downtown core and south of the river, to Plumb Lane University Midtown 	<ul style="list-style-type: none"> South: Student housing in downtown core East: Valley Road residential area West: Keystone Ave 	<ul style="list-style-type: none"> Donner Springs/Mira Loma/Neil Road Midtown Old Southwest Virginia Lake Robb/Mae Anne area north of I-80 Double Diamond/Bella Vista/Da monte
Does Not Include	<ul style="list-style-type: none"> E. Fourth Street corridor is split between two wards. Northeast neighborhood 	<ul style="list-style-type: none"> North: Talus Way/Socrates 	<ul style="list-style-type: none"> Yori/Grove and Brinkby/Lymbery Northeast Neighborhood & E. 4th Street Lakeridge/Rancharrah/Del Monte

Final Option E

	Downtown	University	Communities of Interest
Includes	Representation: 1 Ward <ul style="list-style-type: none"> E. 4 Street Corridor Area east of downtown core and south of the river, to Liberty/Ryland/Mill Northeast neighborhood University 	<ul style="list-style-type: none"> North: Talus/Socrates neighborhoods South: Student housing in downtown core East: Valley Road residential area West: Washington Street 	<ul style="list-style-type: none"> Donner Springs/ Mira Loma/Neil Road Midtown Yori/Grove & Brinkby/Lymbery Northeast Neighborhood & E. 4th Street Lakeridge/Rancharrah/Del Monte Double Diamond/Bella Vista/Damonte Ranch
Does Not Include	<ul style="list-style-type: none"> Midtown 		<ul style="list-style-type: none"> Old Southwest (Plumas Street boundary) Virginia Lake Robb/Mae Anne north of I-80



COIs Maintained in All 4 Options

- North Valleys
- Northeast Neighborhood
- Wells Avenue District
- Rancharra
- Caughlin Ranch
- Country Club Acres
- Cashill Area
- Oddie/Wells corridor
- Paradise Park and nearby senior housing
- Lakeridge
- Double Diamond Ranch
- Somerset
- Roy Gomm, Mayberry, Juniper Hill area