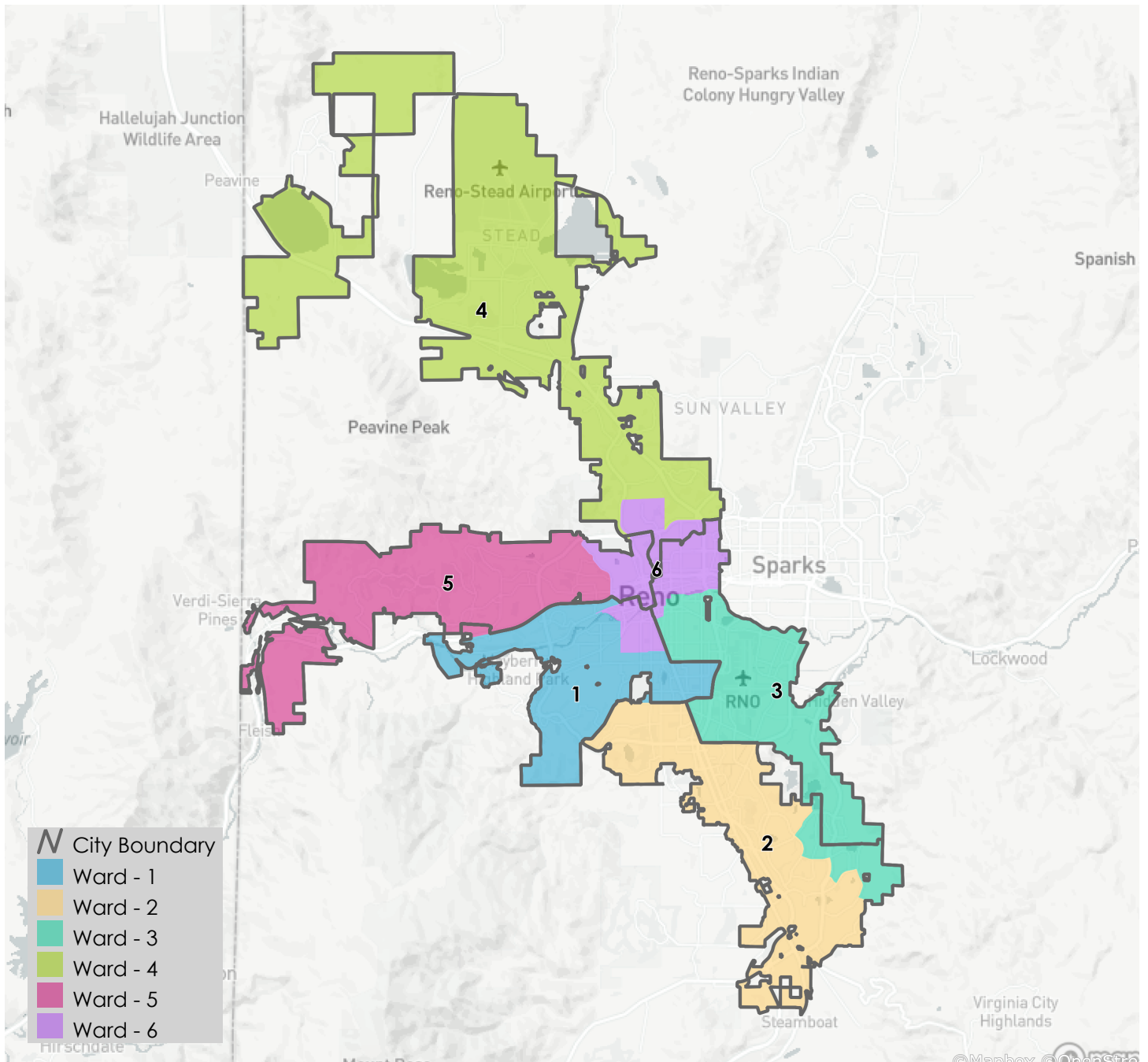


City of Reno

Redistricting Summary Statistics – Draft Scenario 1

06/26/2023



City of Reno

Redistricting Summary Statistics – Draft Scenario 1

06/26/2023

Equal Population Criterion

Ideal Population	44,028
Overall Deviation	2.2%
<div><div>< 5.0%</div><div>> 5.0%</div></div>	

2020 Census P.L. 94-171 Redistricting
Data Summary Files - Total Population.

Total Population & Deviation per Ward

Ward	Total Population	Over / Under Ideal	Deviation From Ideal
1	43,859	-169	-0.4%
2	43,700	-328	-0.7%
3	44,455	428	1.0%
4	44,545	518	1.2%
5	44,035	8	0.0%
6	43,571	-457	-1.0%

Total Population by Race/Ethnicity per Ward

Ward	White	Black or African American	American Indian or Alaska Native	Asian	Native Hawaiian and Pacific Islander	Some Other Race	Two or More Races	Hispanic/Latino
1	60.1%	2.6%	0.6%	4.8%	0.6%	0.5%	4.9%	25.9%
2	66.8%	2.0%	0.5%	8.5%	0.4%	0.5%	5.6%	15.7%
3	50.2%	2.8%	0.8%	7.6%	0.6%	0.6%	4.6%	32.8%
4	48.5%	3.1%	0.9%	5.8%	1.2%	0.5%	5.5%	34.6%
5	67.3%	1.8%	0.6%	8.0%	0.6%	0.5%	5.8%	15.5%
6	52.6%	5.0%	0.9%	6.9%	1.0%	0.6%	5.5%	27.4%

2020 Census P.L. 94-171 Redistricting Data Summary Files - Total Population by Race and Hispanic/Latino Origin.

City of Reno

Redistricting Summary Statistics – Draft Scenario 1

06/26/2023

VAP by Race/Ethnicity per Ward

Ward	White	Black or African American	American Indian or Alaska Native	Asian	Native Hawaiian and Pacific Islander	Some Other Race	Two or More Races	Hispanic/Latino
1	64.7%	2.4%	0.6%	5.2%	0.5%	0.5%	4.1%	21.9%
2	69.9%	2.0%	0.6%	8.7%	0.4%	0.4%	4.5%	13.6%
3	54.7%	2.8%	0.8%	7.9%	0.6%	0.6%	4.0%	28.7%
4	53.4%	3.0%	1.0%	6.2%	1.0%	0.4%	4.6%	30.3%
5	70.3%	1.7%	0.6%	8.4%	0.5%	0.5%	4.6%	13.4%
6	56.8%	5.0%	0.9%	7.3%	0.8%	0.6%	5.1%	23.5%

2020 Census P.L 94-171 Redistricting Data Summary Files - Voting-age Population (VAP) by Race and Hispanic/Latino Origin.

CVAP by Race/Ethnicity per Ward

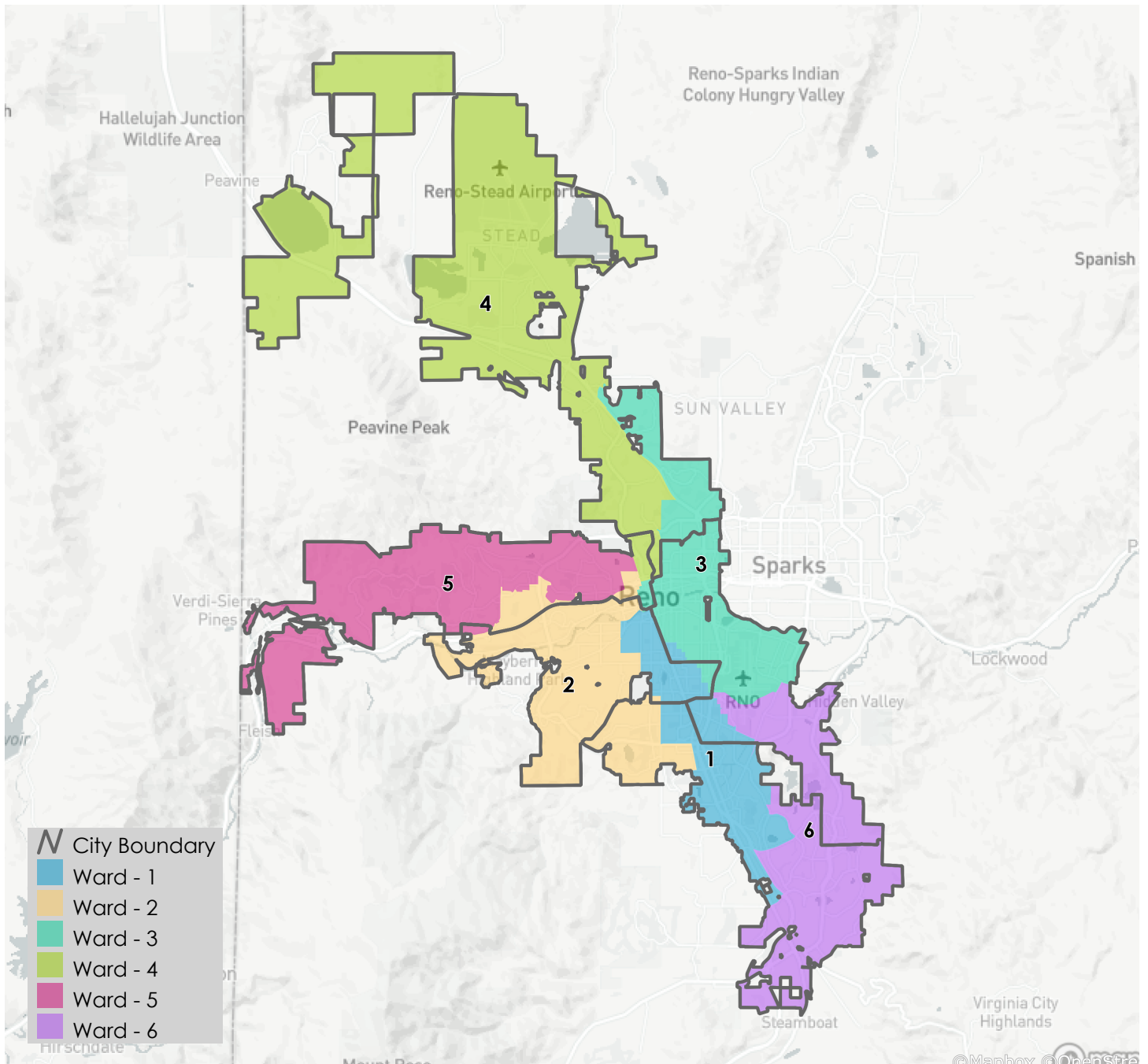
Ward	White	Black or African American	American Indian or Alaska Native	Asian	Native Hawaiian and Pacific Islander	Two or More Races	Hispanic/Latino
1	75.4%	2.8%	0.8%	4.0%	0.6%	2.8%	13.5%
2	76.7%	1.6%	0.8%	6.5%	1.2%	2.9%	10.4%
3	63.9%	2.5%	1.4%	5.9%	1.1%	2.6%	22.7%
4	64.3%	4.5%	0.7%	4.5%	0.4%	3.4%	22.2%
5	76.3%	2.8%	0.5%	6.6%	0.6%	2.9%	10.3%
6	67.1%	5.3%	1.2%	5.7%	0.8%	2.2%	17.8%

2017-2021 American Community Survey Citizen Voting-age Population (CVAP) by Race and Ethnicity Special Tabulation. Rounding of estimates may lead to summation of race/ethnicity percentages not equal to 100% (+/- 1%).

City of Reno

Redistricting Summary Statistics – Draft Scenario 2

06/26/2023



City of Reno

Redistricting Summary Statistics – Draft Scenario 2

06/26/2023

Equal Population Criterion

Ideal Population	44,028
Overall Deviation	1.5%
< 5.0%	> 5.0%

2020 Census P.L. 94-171 Redistricting
Data Summary Files - Total Population.

Total Population & Deviation per Ward

Ward	Total Population	Over / Under Ideal	Deviation From Ideal
1	44,122	95	0.2%
2	44,183	156	0.4%
3	44,109	82	0.2%
4	44,080	53	0.1%
5	44,146	119	0.3%
6	43,525	-503	-1.1%

Total Population by Race/Ethnicity per Ward

Ward	White	Black or African American	American Indian or Alaska Native	Asian	Native Hawaiian and Pacific Islander	Some Other Race	Two or More Races	Hispanic/Latino
1	47.6%	3.8%	0.8%	6.3%	0.7%	0.5%	4.7%	35.6%
2	72.5%	1.8%	0.6%	5.4%	0.3%	0.5%	5.4%	13.5%
3	43.7%	5.1%	1.0%	6.1%	1.3%	0.7%	4.7%	37.3%
4	49.6%	3.3%	0.8%	6.8%	1.1%	0.5%	5.8%	32.1%
5	68.2%	1.7%	0.6%	7.8%	0.5%	0.5%	5.8%	14.9%
6	63.6%	1.5%	0.5%	9.3%	0.4%	0.4%	5.6%	18.6%

2020 Census P.L. 94-171 Redistricting Data Summary Files - Total Population by Race and Hispanic/Latino Origin.

City of Reno

Redistricting Summary Statistics – Draft Scenario 2

06/26/2023

VAP by Race/Ethnicity per Ward

Ward	White	Black or African American	American Indian or Alaska Native	Asian	Native Hawaiian and Pacific Islander	Some Other Race	Two or More Races	Hispanic/Latino
1	53.2%	3.5%	0.7%	6.8%	0.7%	0.6%	4.0%	30.6%
2	75.4%	1.8%	0.6%	5.5%	0.2%	0.5%	4.2%	11.7%
3	48.9%	5.1%	1.1%	6.6%	1.1%	0.8%	4.3%	32.1%
4	54.0%	3.4%	0.9%	7.3%	0.9%	0.5%	5.0%	28.0%
5	71.1%	1.7%	0.6%	8.1%	0.5%	0.5%	4.7%	12.9%
6	66.8%	1.5%	0.6%	9.4%	0.4%	0.4%	4.6%	16.3%

2020 Census P.L 94-171 Redistricting Data Summary Files - Voting-age Population (VAP) by Race and Hispanic/Latino Origin.

CVAP by Race/Ethnicity per Ward

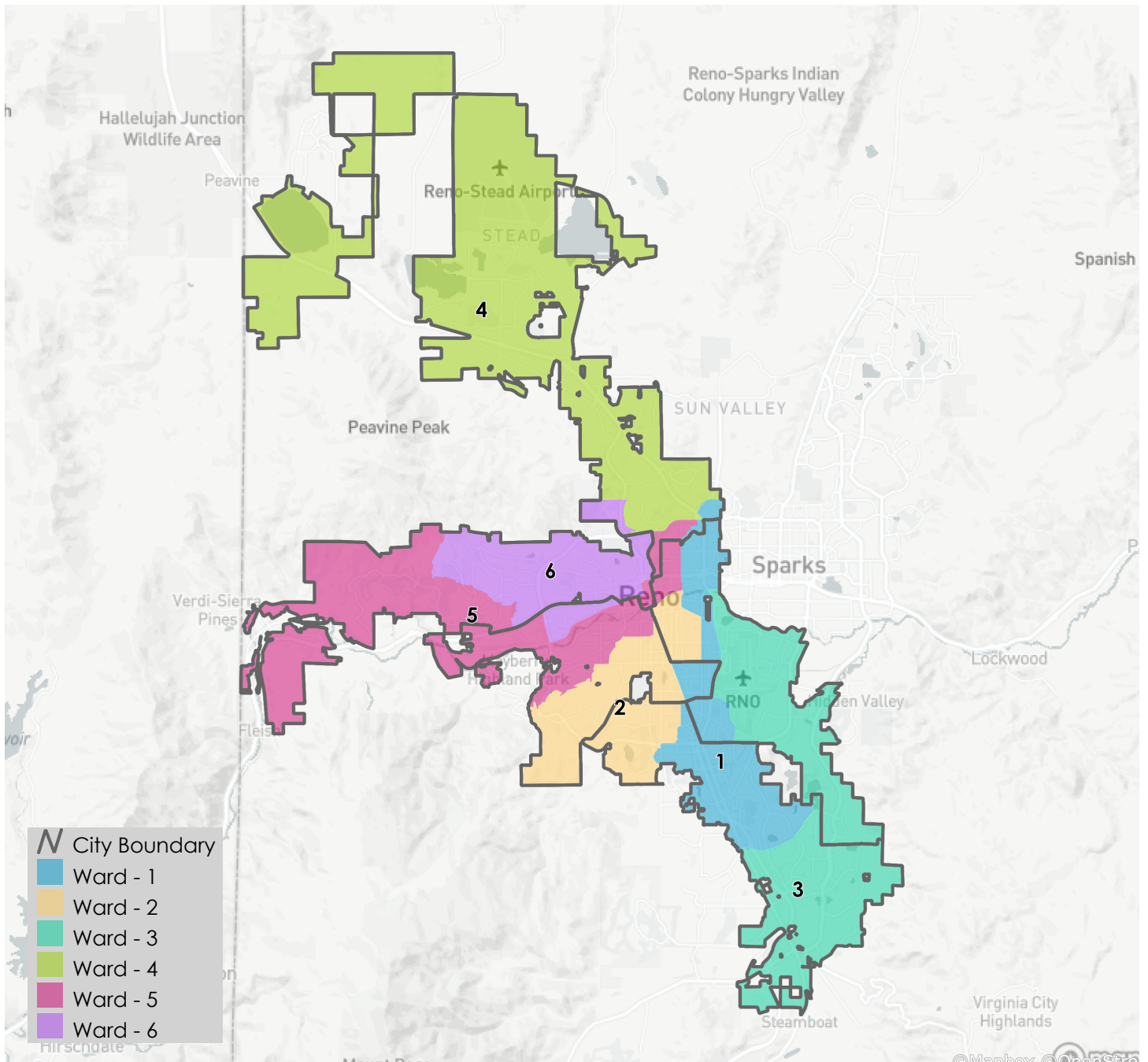
Ward	White	Black or African American	American Indian or Alaska Native	Asian	Native Hawaiian and Pacific Islander	Two or More Races	Hispanic/Latino
1	64.6%	2.9%	0.7%	6.2%	0.9%	2.6%	22.1%
2	80.4%	2.1%	0.8%	5.2%	0.4%	2.3%	8.8%
3	58.5%	7.2%	1.6%	5.2%	1.2%	3.3%	23.1%
4	65.1%	3.8%	0.7%	4.7%	0.5%	3.0%	22.2%
5	77.4%	2.7%	0.6%	6.4%	0.5%	2.8%	9.7%
6	75.2%	1.1%	1.0%	5.7%	1.3%	2.8%	12.8%

2017-2021 American Community Survey Citizen Voting-age Population (CVAP) by Race and Ethnicity Special Tabulation. Rounding of estimates may lead to summation of race/ethnicity percentages not equal to 100% (+/- 1%).

City of Reno

Redistricting Summary Statistics – Draft Scenario 3

06/26/2023



City of Reno

Redistricting Summary Statistics – Draft Scenario 3

06/26/2023

Equal Population Criterion

Ideal Population	44,028
Overall Deviation	1.9%
< 5.0%	> 5.0%

2020 Census P.L. 94-171 Redistricting
Data Summary Files - Total Population.

Total Population & Deviation per Ward

Ward	Total Population	Over / Under Ideal	Deviation From Ideal
1	44,452	425	1.0%
2	43,983	-45	-0.1%
3	44,224	197	0.4%
4	43,597	-431	-1.0%
5	43,992	-36	-0.1%
6	43,917	-111	-0.3%

Total Population by Race/Ethnicity per Ward

Ward	White	Black or African American	American Indian or Alaska Native	Asian	Native Hawaiian and Pacific Islander	Some Other Race	Two or More Races	Hispanic/Latino
1	36.7%	4.6%	0.9%	6.4%	1.1%	0.5%	4.1%	45.8%
2	63.9%	2.7%	0.7%	5.9%	0.7%	0.7%	5.1%	20.4%
3	64.4%	1.5%	0.6%	9.4%	0.4%	0.4%	5.7%	17.6%
4	48.3%	3.0%	0.8%	6.1%	1.2%	0.5%	5.4%	34.7%
5	68.7%	2.7%	0.7%	5.6%	0.4%	0.6%	5.3%	15.9%
6	63.4%	2.6%	0.7%	8.3%	0.6%	0.5%	6.4%	17.6%

2020 Census P.L. 94-171 Redistricting Data Summary Files - Total Population by Race and Hispanic/Latino Origin.

City of Reno

Redistricting Summary Statistics – Draft Scenario 3

06/26/2023

VAP by Race/Ethnicity per Ward

Ward	White	Black or African American	American Indian or Alaska Native	Asian	Native Hawaiian and Pacific Islander	Some Other Race	Two or More Races	Hispanic/Latino
1	42.4%	4.5%	0.9%	7.1%	0.9%	0.5%	3.7%	40.1%
2	67.6%	2.6%	0.7%	6.1%	0.6%	0.7%	4.2%	17.6%
3	67.4%	1.6%	0.6%	9.6%	0.4%	0.4%	4.6%	15.5%
4	53.1%	3.0%	0.9%	6.6%	1.0%	0.5%	4.5%	30.4%
5	71.3%	2.8%	0.7%	5.9%	0.4%	0.6%	4.3%	13.9%
6	66.1%	2.6%	0.7%	8.6%	0.5%	0.4%	5.6%	15.5%

2020 Census P.L 94-171 Redistricting Data Summary Files - Voting-age Population (VAP) by Race and Hispanic/Latino Origin.

CVAP by Race/Ethnicity per Ward

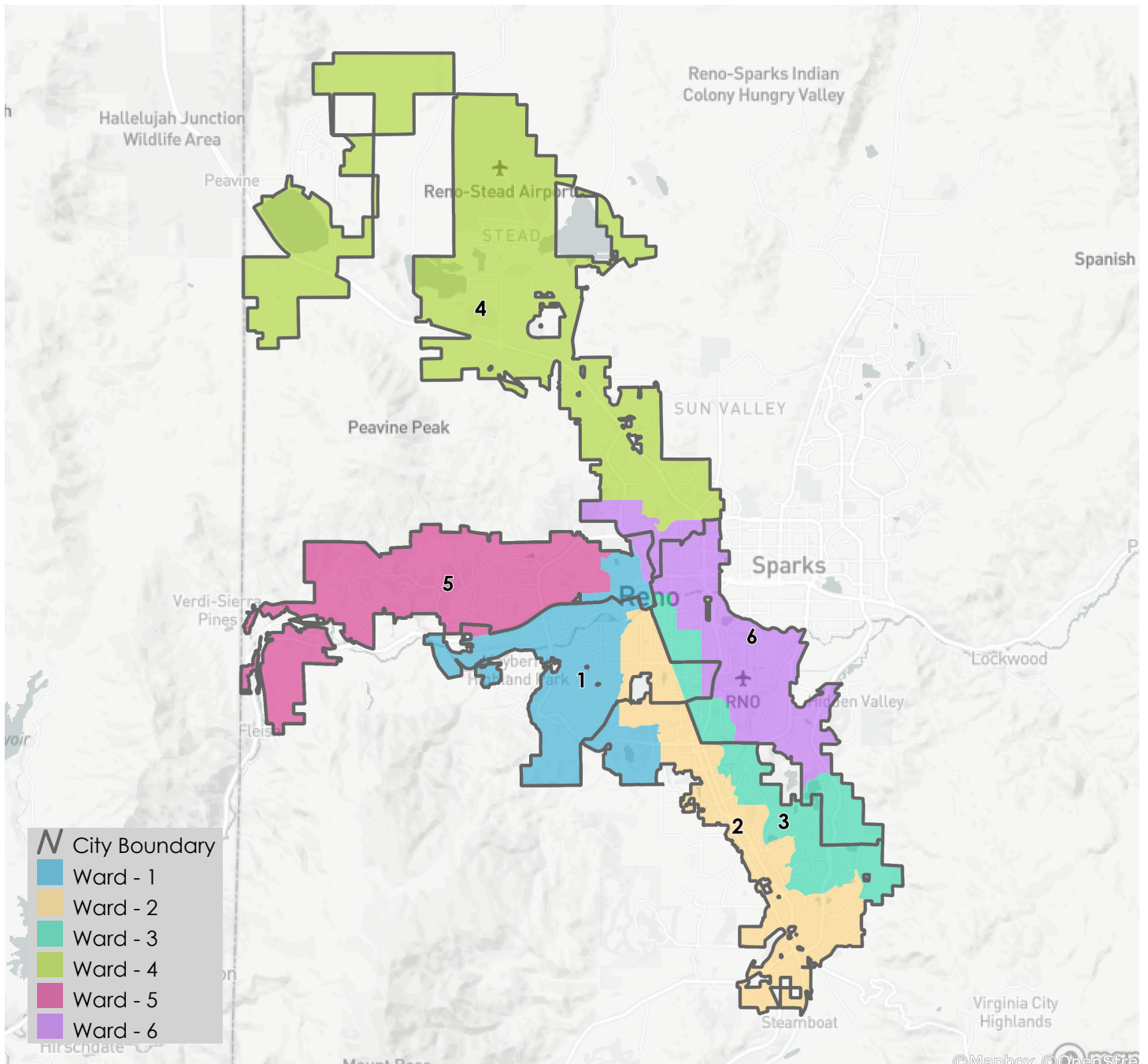
Ward	White	Black or African American	American Indian or Alaska Native	Asian	Native Hawaiian and Pacific Islander	Two or More Races	Hispanic/Latino
1	55.2%	5.2%	1.1%	5.5%	1.4%	2.3%	29.4%
2	74.8%	2.3%	0.9%	5.6%	0.8%	2.8%	12.8%
3	75.5%	1.4%	1.0%	5.8%	1.3%	2.9%	12.2%
4	64.7%	4.4%	0.7%	4.5%	0.4%	3.5%	21.8%
5	76.1%	3.5%	0.9%	4.7%	0.5%	2.3%	12.1%
6	73.5%	3.2%	0.9%	7.2%	0.5%	3.0%	11.8%

2017-2021 American Community Survey Citizen Voting-age Population (CVAP) by Race and Ethnicity Special Tabulation. Rounding of estimates may lead to summation of race/ethnicity percentages not equal to 100% (+/- 1%).

City of Reno

Redistricting Summary Statistics – Draft Scenario 4

06/26/2023



City of Reno

Redistricting Summary Statistics – Draft Scenario 4

06/26/2023

Equal Population Criterion

Ideal Population	44,028
Overall Deviation	2.0%
<div><div>< 5.0%</div><div>> 5.0%</div></div>	

2020 Census P.L. 94-171 Redistricting
Data Summary Files - Total Population.

Total Population & Deviation per Ward

Ward	Total Population	Over / Under Ideal	Deviation From Ideal
1	43,464	-564	-1.3%
2	44,315	288	0.7%
3	44,098	71	0.2%
4	43,858	-170	-0.4%
5	44,084	57	0.1%
6	44,346	319	0.7%

Total Population by Race/Ethnicity per Ward

Ward	White	Black or African American	American Indian or Alaska Native	Asian	Native Hawaiian and Pacific Islander	Some Other Race	Two or More Races	Hispanic/Latino
1	72.1%	2.1%	0.6%	5.7%	0.3%	0.5%	5.7%	13.0%
2	63.6%	2.9%	0.6%	7.3%	0.6%	0.5%	5.5%	18.8%
3	50.3%	2.7%	0.7%	7.8%	0.5%	0.6%	4.8%	32.7%
4	48.0%	3.0%	0.8%	6.1%	1.2%	0.5%	5.4%	34.9%
5	67.8%	1.7%	0.6%	7.9%	0.5%	0.5%	5.7%	15.2%
6	43.5%	4.7%	0.9%	6.8%	1.3%	0.6%	4.8%	37.3%

2020 Census P.L. 94-171 Redistricting Data Summary Files - Total Population by Race and Hispanic/Latino Origin.

City of Reno

Redistricting Summary Statistics – Draft Scenario 4

06/26/2023

VAP by Race/Ethnicity per Ward

Ward	White	Black or African American	American Indian or Alaska Native	Asian	Native Hawaiian and Pacific Islander	Some Other Race	Two or More Races	Hispanic/Latino
1	74.5%	2.2%	0.6%	5.8%	0.2%	0.5%	4.6%	11.5%
2	67.2%	2.7%	0.7%	7.5%	0.6%	0.5%	4.6%	16.2%
3	54.7%	2.7%	0.6%	8.1%	0.5%	0.6%	4.0%	28.7%
4	52.9%	3.0%	1.0%	6.6%	1.0%	0.5%	4.5%	30.6%
5	70.8%	1.7%	0.6%	8.3%	0.5%	0.4%	4.6%	13.1%
6	48.5%	4.7%	1.0%	7.4%	1.1%	0.6%	4.5%	32.2%

2020 Census P.L 94-171 Redistricting Data Summary Files - Voting-age Population (VAP) by Race and Hispanic/Latino Origin.

CVAP by Race/Ethnicity per Ward

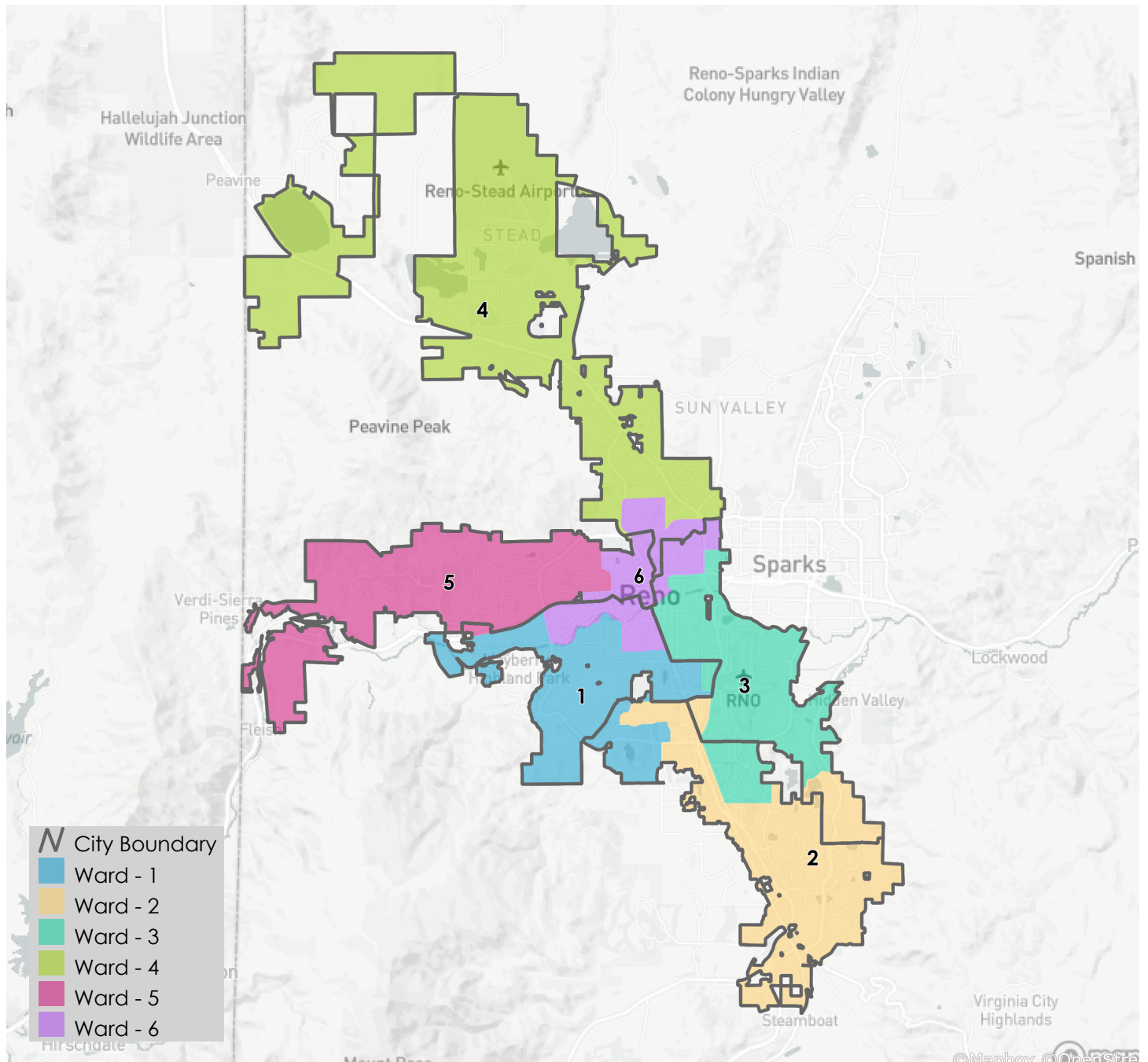
Ward	White	Black or African American	American Indian or Alaska Native	Asian	Native Hawaiian and Pacific Islander	Two or More Races	Hispanic/Latino
1	80.5%	2.4%	0.9%	4.5%	0.3%	2.3%	9.2%
2	73.6%	1.5%	0.9%	7.1%	0.5%	3.7%	12.8%
3	64.1%	3.7%	1.1%	6.4%	2.0%	2.3%	20.4%
4	64.3%	4.7%	0.6%	4.6%	0.4%	3.4%	22.0%
5	76.6%	2.8%	0.6%	6.5%	0.6%	2.9%	10.1%
6	61.8%	4.9%	1.4%	4.3%	1.0%	2.2%	24.4%

2017-2021 American Community Survey Citizen Voting-age Population (CVAP) by Race and Ethnicity Special Tabulation. Rounding of estimates may lead to summation of race/ethnicity percentages not equal to 100% (+/- 1%).

City of Reno

Redistricting Summary Statistics – Draft Scenario 5

06/26/2023



City of Reno

Redistricting Summary Statistics – Draft Scenario 5

06/26/2023

Equal Population Criterion

Ideal Population	44,028
Overall Deviation	1.9%
< 5.0%	> 5.0%

2020 Census P.L. 94-171 Redistricting
Data Summary Files - Total Population.

Total Population & Deviation per Ward

Ward	Total Population	Over / Under Ideal	Deviation From Ideal
1	43,721	-307	-0.7%
2	44,299	272	0.6%
3	43,920	-108	-0.2%
4	44,545	518	1.2%
5	43,897	-131	-0.3%
6	43,783	-245	-0.6%

Total Population by Race/Ethnicity per Ward

Ward	White	Black or African American	American Indian or Alaska Native	Asian	Native Hawaiian and Pacific Islander	Some Other Race	Two or More Races	Hispanic/Latino
1	64.4%	2.2%	0.5%	5.2%	0.6%	0.5%	4.8%	21.8%
2	66.3%	1.8%	0.6%	9.6%	0.4%	0.4%	5.8%	15.1%
3	43.6%	3.7%	0.9%	6.3%	0.8%	0.6%	4.3%	39.7%
4	48.5%	3.1%	0.9%	5.8%	1.2%	0.5%	5.5%	34.6%
5	67.8%	1.7%	0.6%	8.0%	0.5%	0.5%	5.7%	15.2%
6	54.7%	4.7%	0.9%	6.8%	0.9%	0.6%	5.9%	25.6%

2020 Census P.L. 94-171 Redistricting Data Summary Files - Total Population by Race and Hispanic/Latino Origin.

City of Reno

Redistricting Summary Statistics – Draft Scenario 5

06/26/2023

VAP by Race/Ethnicity per Ward

Ward	White	Black or African American	American Indian or Alaska Native	Asian	Native Hawaiian and Pacific Islander	Some Other Race	Two or More Races	Hispanic/Latino
1	68.8%	2.0%	0.5%	5.5%	0.5%	0.5%	3.8%	18.3%
2	69.3%	1.8%	0.6%	9.7%	0.4%	0.4%	4.6%	13.1%
3	48.7%	3.8%	0.9%	6.8%	0.7%	0.7%	3.8%	34.5%
4	53.4%	3.0%	1.0%	6.2%	1.0%	0.4%	4.6%	30.3%
5	70.8%	1.7%	0.6%	8.3%	0.5%	0.4%	4.6%	13.2%
6	58.7%	4.5%	0.8%	7.1%	0.8%	0.6%	5.3%	22.0%

2020 Census P.L 94-171 Redistricting Data Summary Files - Voting-age Population (VAP) by Race and Hispanic/Latino Origin.

CVAP by Race/Ethnicity per Ward

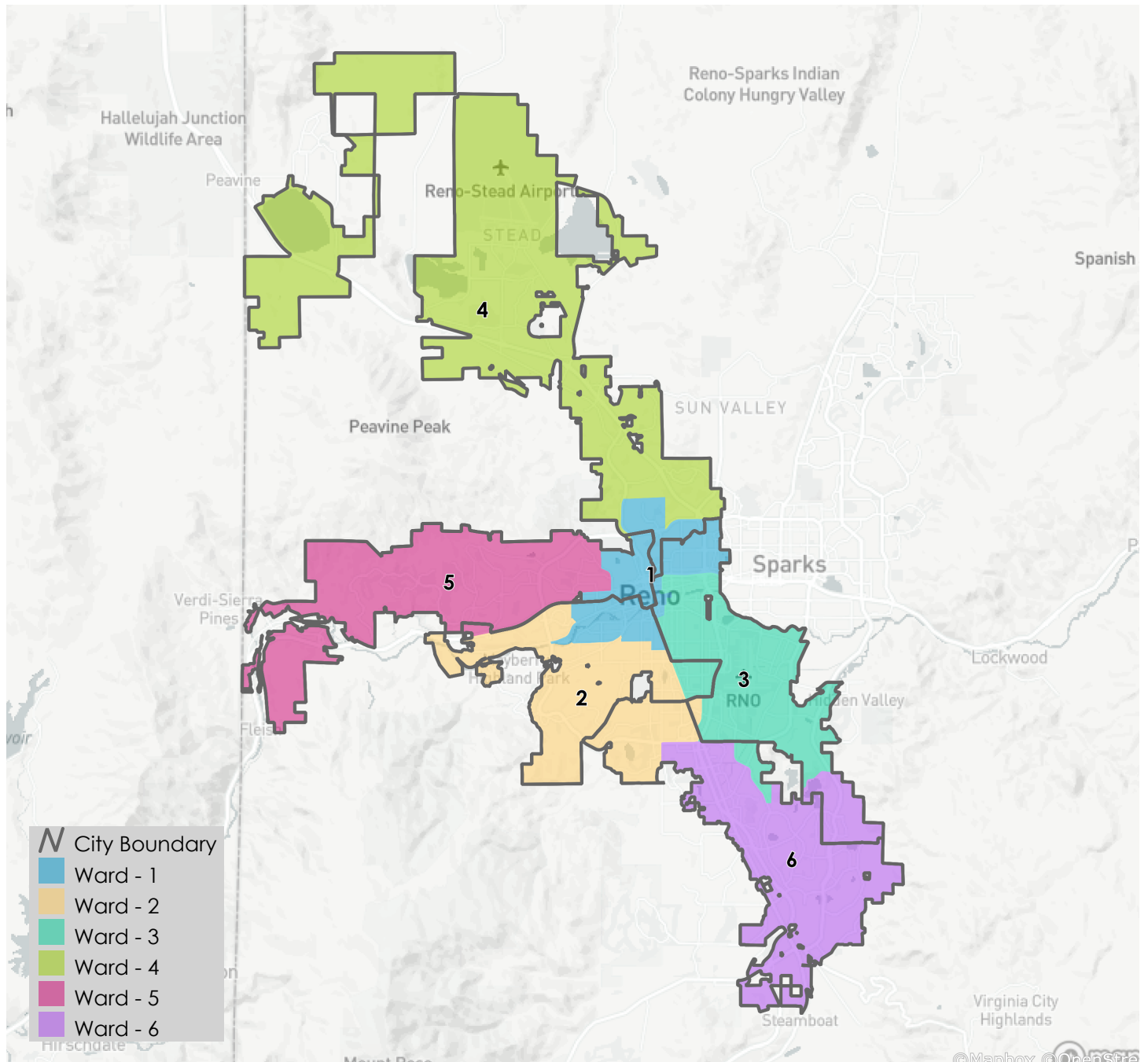
Ward	White	Black or African American	American Indian or Alaska Native	Asian	Native Hawaiian and Pacific Islander	Two or More Races	Hispanic/Latino
1	78.5%	2.2%	0.6%	3.8%	0.6%	2.4%	11.9%
2	73.9%	1.6%	1.0%	7.4%	1.2%	3.5%	11.5%
3	60.5%	3.8%	1.3%	4.9%	1.4%	2.2%	25.8%
4	64.3%	4.5%	0.7%	4.5%	0.4%	3.4%	22.2%
5	76.6%	2.8%	0.6%	6.5%	0.6%	2.9%	10.1%
6	69.1%	4.5%	1.3%	6.1%	0.5%	2.5%	16.0%

2017-2021 American Community Survey Citizen Voting-age Population (CVAP) by Race and Ethnicity Special Tabulation. Rounding of estimates may lead to summation of race/ethnicity percentages not equal to 100% (+/- 1%).

City of Reno

Redistricting Summary Statistics – Draft Scenario 6

06/26/2023



City of Reno

Redistricting Summary Statistics – Draft Scenario 6

06/26/2023

Equal Population Criterion

Ideal Population	44,028
Overall Deviation	4.3%
<div><div>< 5.0%</div><div>> 5.0%</div></div>	

2020 Census P.L. 94-171 Redistricting
Data Summary Files - Total Population.

Total Population & Deviation per Ward

Ward	Total Population	Over / Under Ideal	Deviation From Ideal
1	45,027	1,000	2.3%
2	43,164	-864	-2.0%
3	43,115	-913	-2.1%
4	44,545	518	1.2%
5	43,897	-131	-0.3%
6	44,417	390	0.9%

Total Population by Race/Ethnicity per Ward

Ward	White	Black or African American	American Indian or Alaska Native	Asian	Native Hawaiian and Pacific Islander	Some Other Race	Two or More Races	Hispanic/Latino
1	53.6%	4.7%	0.8%	6.9%	1.0%	0.6%	5.5%	27.0%
2	69.2%	2.1%	0.5%	5.6%	0.5%	0.5%	5.4%	16.1%
3	40.6%	3.7%	0.9%	5.6%	0.8%	0.6%	4.0%	43.8%
4	48.5%	3.1%	0.9%	5.8%	1.2%	0.5%	5.5%	34.6%
5	67.8%	1.7%	0.6%	8.0%	0.5%	0.5%	5.7%	15.2%
6	65.6%	1.9%	0.5%	9.7%	0.4%	0.4%	5.9%	15.5%

2020 Census P.L. 94-171 Redistricting Data Summary Files - Total Population by Race and Hispanic/Latino Origin.

City of Reno

Redistricting Summary Statistics – Draft Scenario 6

06/26/2023

VAP by Race/Ethnicity per Ward

Ward	White	Black or African American	American Indian or Alaska Native	Asian	Native Hawaiian and Pacific Islander	Some Other Race	Two or More Races	Hispanic/Latino
1	57.8%	4.6%	0.9%	7.2%	0.8%	0.6%	5.0%	23.2%
2	72.9%	2.0%	0.6%	5.8%	0.5%	0.5%	4.3%	13.5%
3	45.9%	3.7%	0.9%	6.2%	0.7%	0.7%	3.6%	38.3%
4	53.4%	3.0%	1.0%	6.2%	1.0%	0.4%	4.6%	30.3%
5	70.8%	1.7%	0.6%	8.3%	0.5%	0.4%	4.6%	13.2%
6	68.6%	1.9%	0.6%	9.9%	0.4%	0.4%	4.7%	13.6%

2020 Census P.L 94-171 Redistricting Data Summary Files - Voting-age Population (VAP) by Race and Hispanic/Latino Origin.

CVAP by Race/Ethnicity per Ward

Ward	White	Black or African American	American Indian or Alaska Native	Asian	Native Hawaiian and Pacific Islander	Two or More Races	Hispanic/Latino
1	67.9%	4.5%	1.2%	5.5%	0.6%	2.4%	17.9%
2	79.4%	2.1%	0.6%	5.4%	0.5%	2.6%	9.3%
3	59.4%	4.1%	1.5%	4.1%	1.1%	2.4%	27.4%
4	64.3%	4.5%	0.7%	4.5%	0.4%	3.4%	22.2%
5	76.6%	2.8%	0.6%	6.5%	0.6%	2.9%	10.1%
6	74.9%	1.5%	0.9%	7.1%	1.5%	3.2%	11.1%

2017-2021 American Community Survey Citizen Voting-age Population (CVAP) by Race and Ethnicity Special Tabulation. Rounding of estimates may lead to summation of race/ethnicity percentages not equal to 100% (+/- 1%).