

City of Reno Lift Station Improvement Projects

Item B.9 – Donner Springs, Stead Bus, Sagittarius and South Dakota Lift Station Improvement Project with Atkins (\$269,814)





Item B.10 – Huffaker Lift Station and Lakeridge Lift Station Replacement Project with Shaw Engineering (\$321,940)

Item B.11 – Corey Lift Station and Sky Vista Lift Station Improvement Project with Carollo (\$175,807)



**Utility Services Department
April 26, 2023**

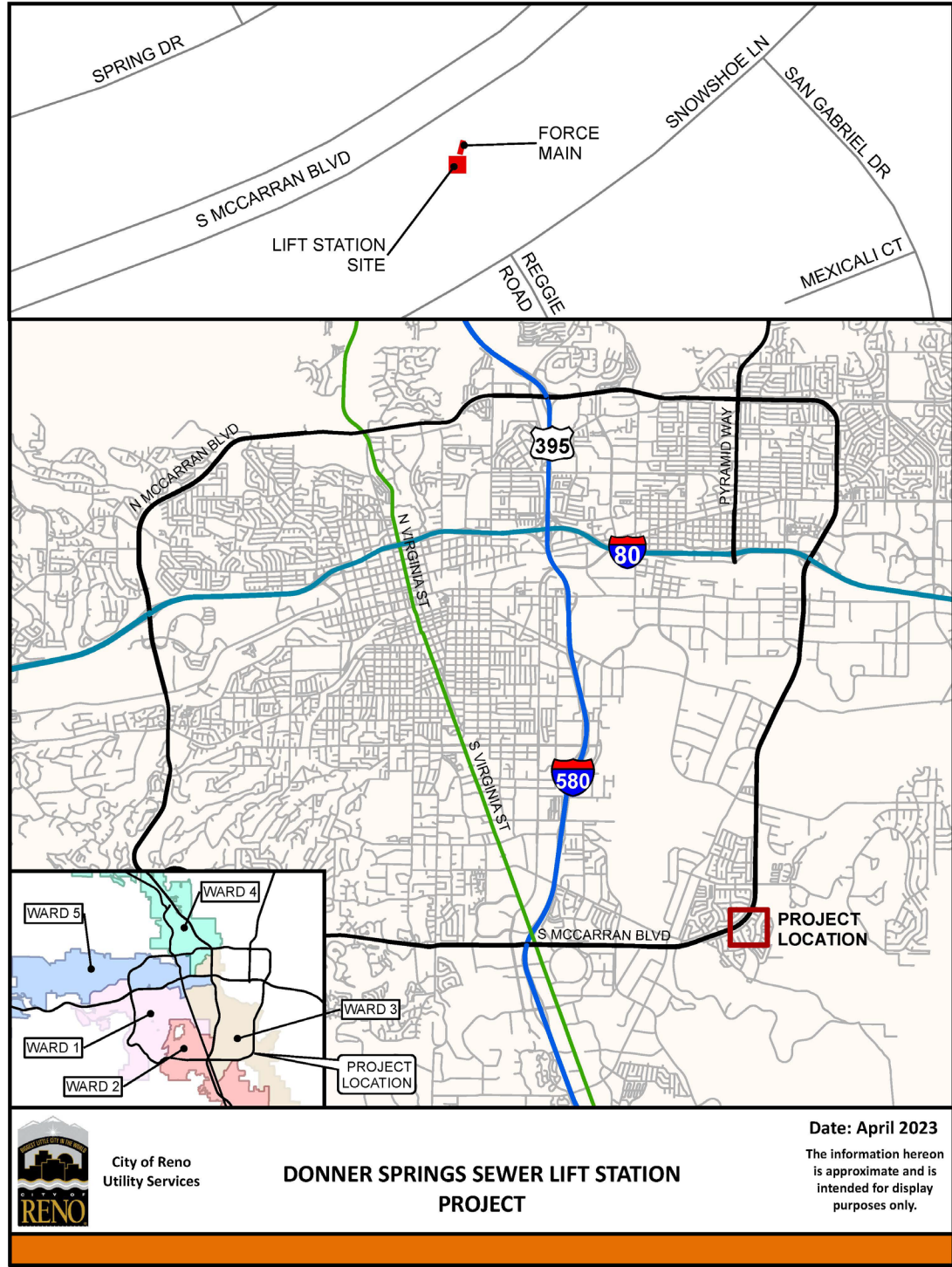
Why It's Recommended

- Improve safety for lift station operators 
- Enhance operations during emergencies 
- Replace outdated infrastructure 
- Bring up to current industry standards 

Item B9 – Agreement with Atkins

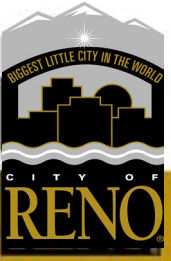
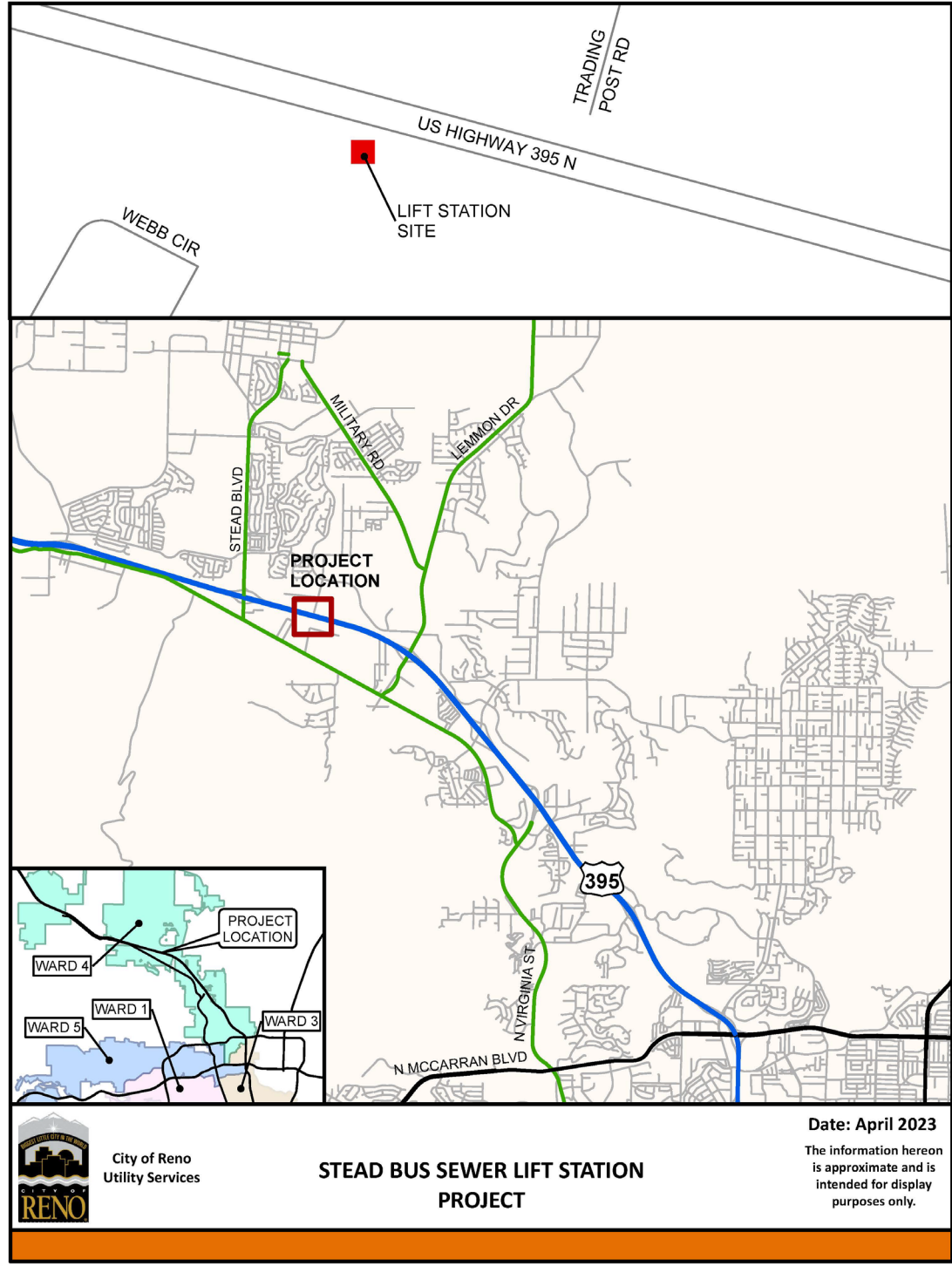
Donner Springs

- Built in 1960 rebuilt in 2014
- Priority score 2

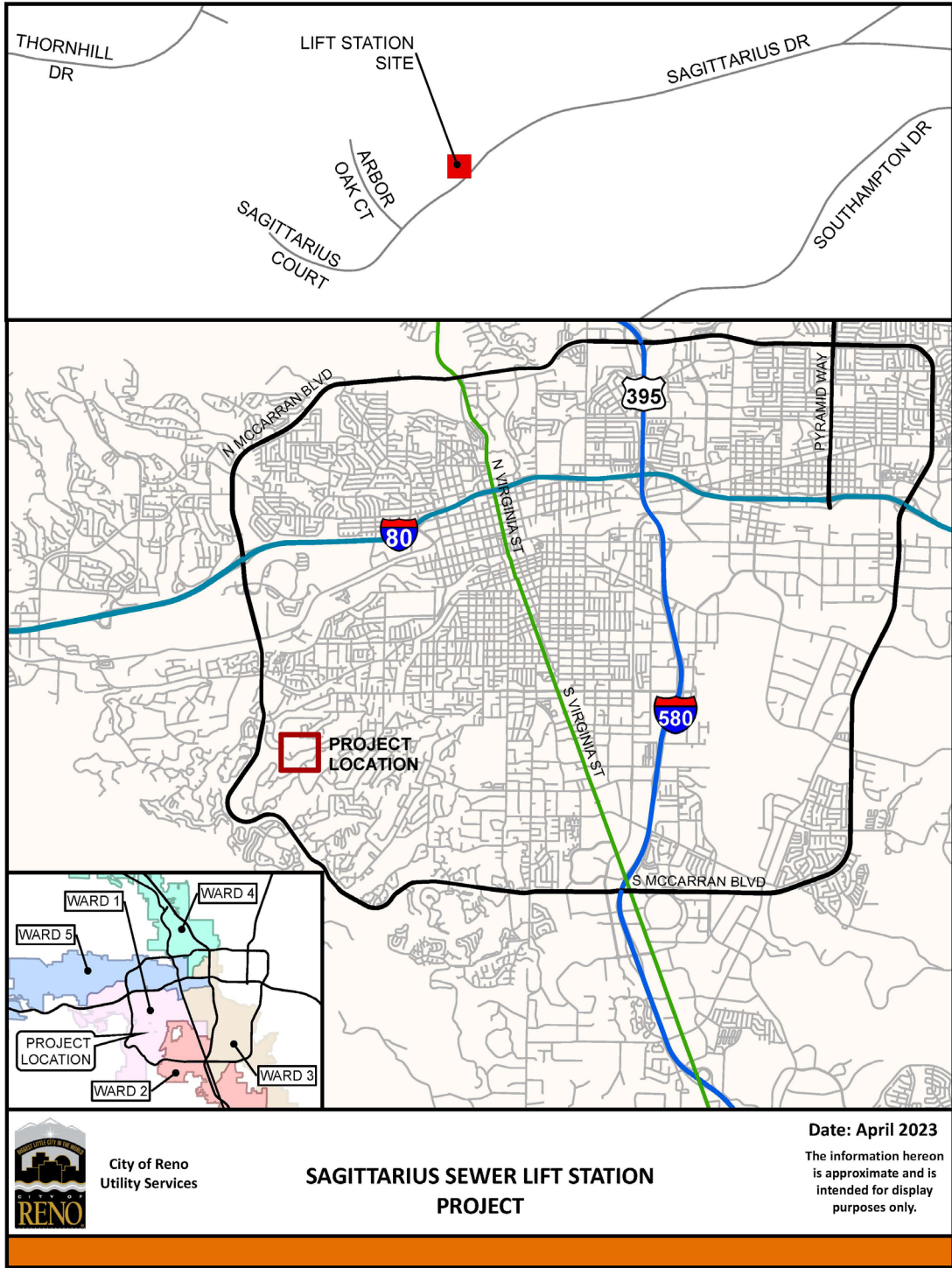


Stead Bus

- Built in 1988
- Priority score 2

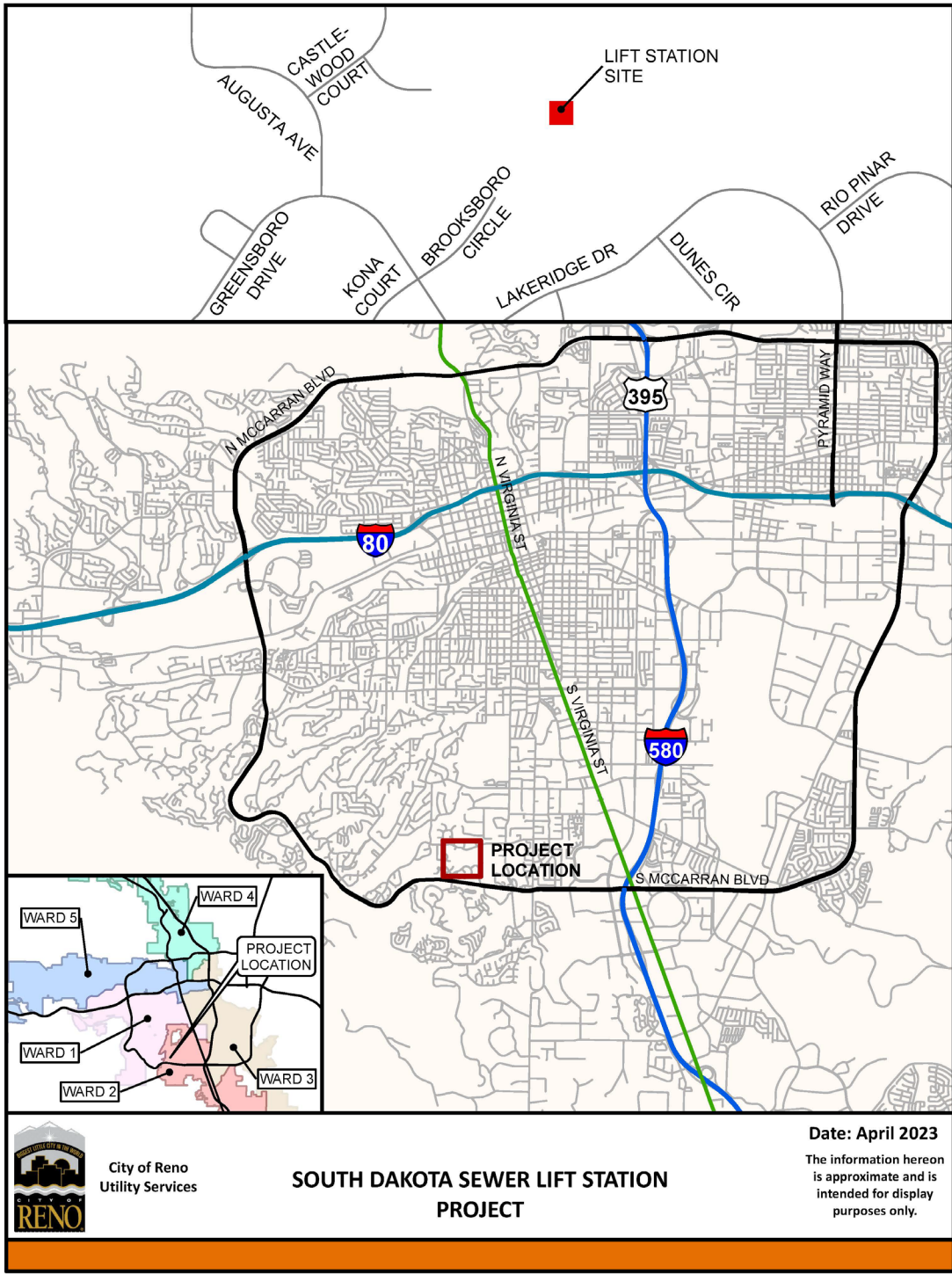


Item B9 – Agreement with Atkins



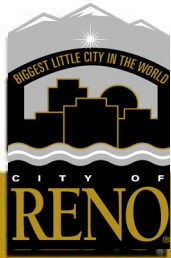
Sagittarius

- Built in 1989
- Priority score 2

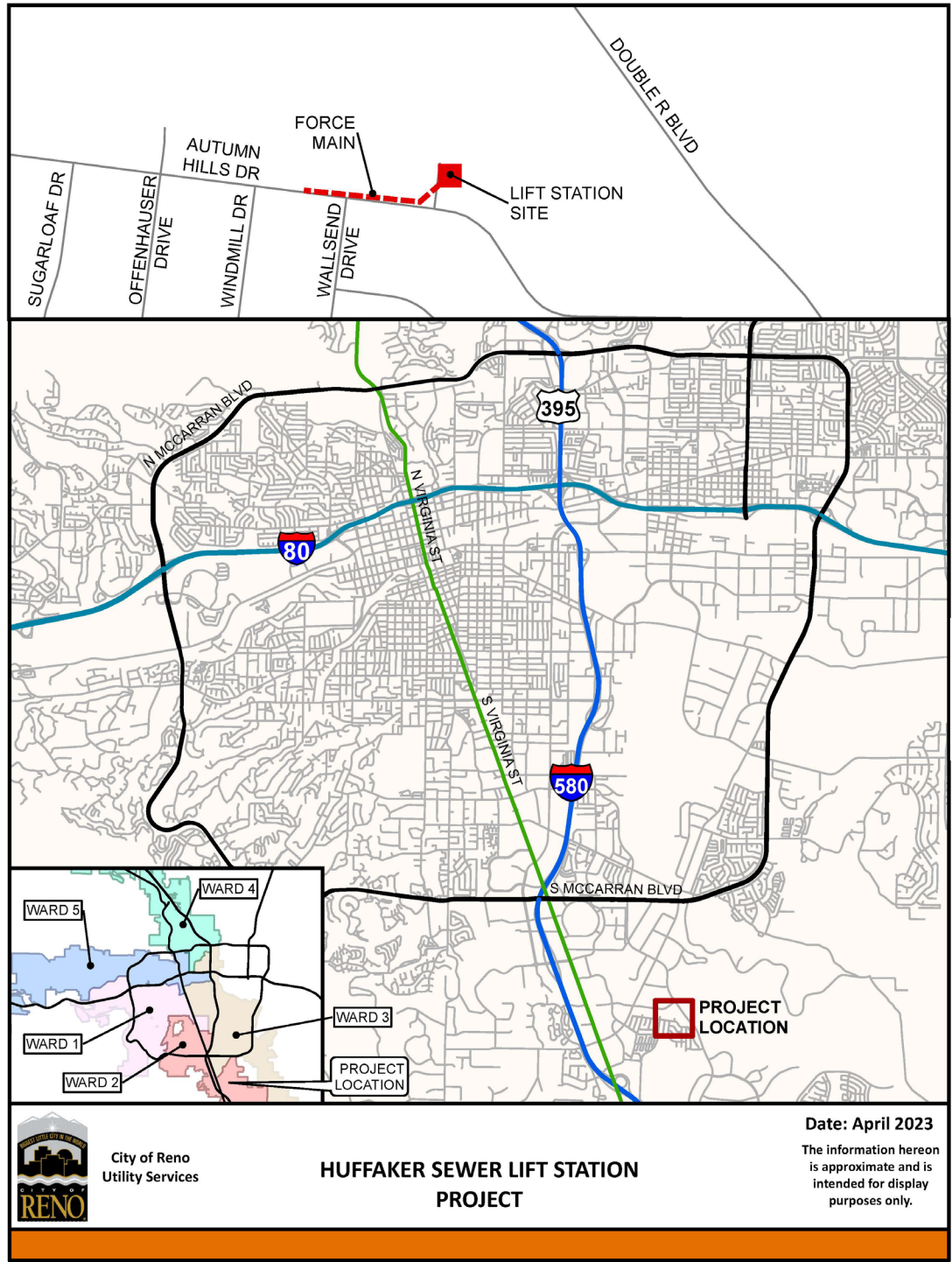


South Dakota

- Built in 1986, rebuilt in 2017
- Priority score 5

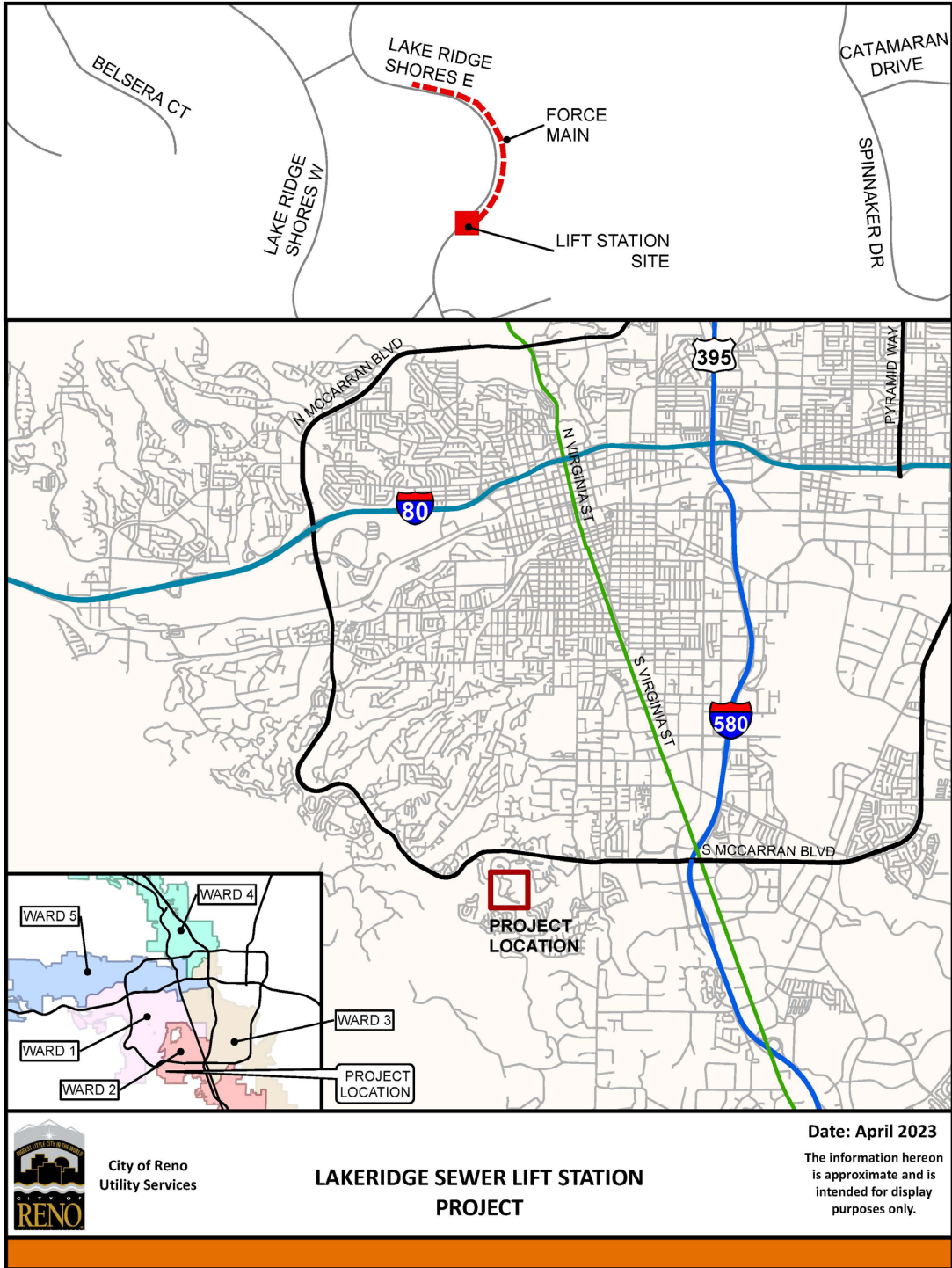


Item B10 – Agreement with Shaw Engineering



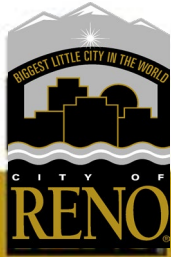
Huffaker

- Built in 1977
- Priority score 2



Lakeridge

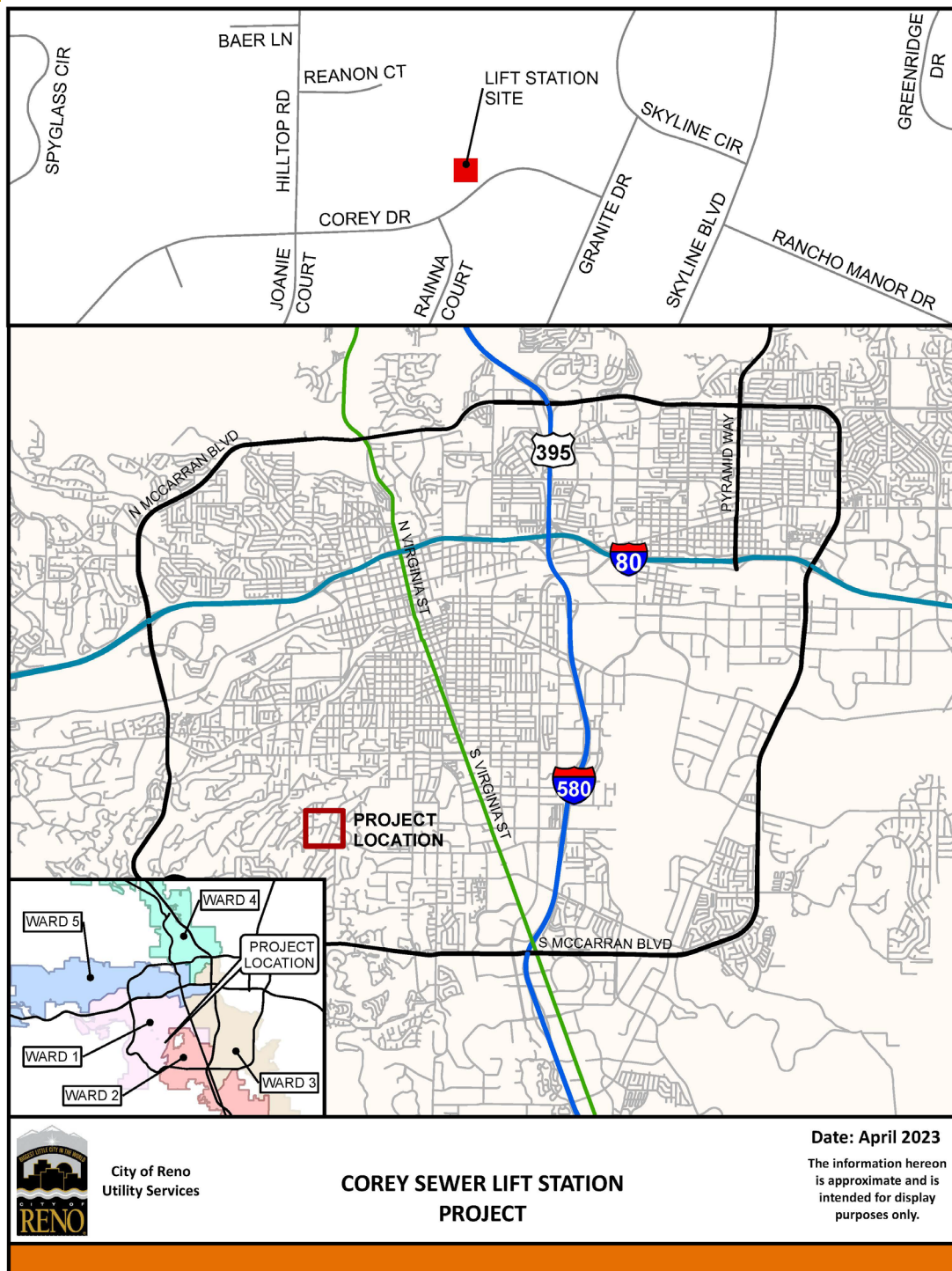
- Built in 1977
- Priority score 2



Huffaker Electrical

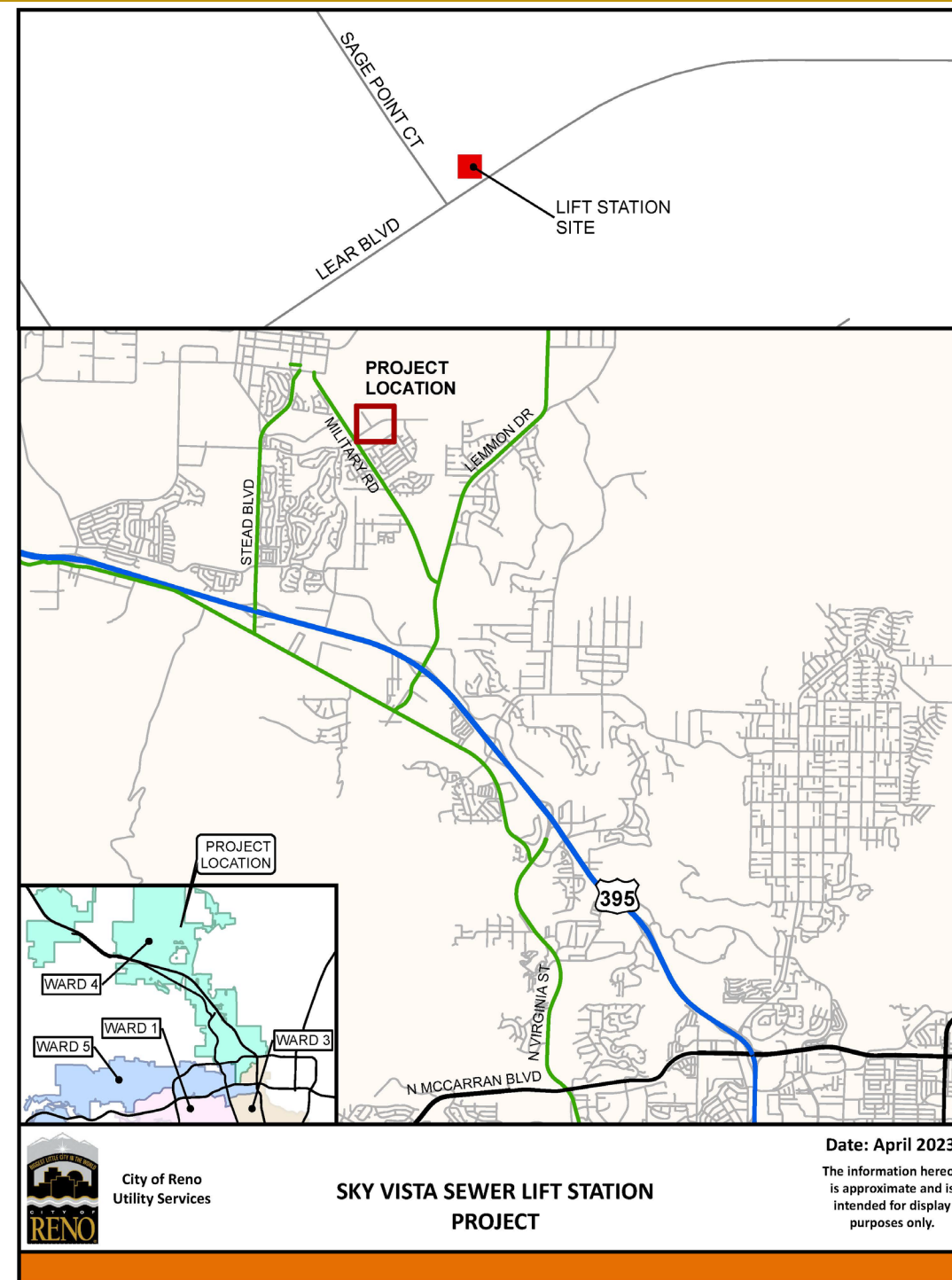


Item B11 – Agreement with Carollo



Corey

- Built in 1960
rebuilt in 2007
- Priority score 2



Sky Vista

- Built in 1996
- Priority score 1



Staff Recommendation

Item B.9 – I move to approve the consultant agreement with Atkins for the Donner Springs, Stead Bus, Sagittarius and South Dakota Lift Stations Improvements Project in the amount of \$269,814.

Item B.10 – I move to approve the consultant agreement with Shaw Engineering for the Huffaker Lift Station and Lakeridge Lift Station Replacement Project in the amount of \$321,940.

Item B.11 – I move to approve the consultant agreement with Carollo for the Corey Lift Station and Sky Vista Lift Station Improvements Project in the amount of \$175,807.

What is a sewer lift station

