

Figure 1 displays a 2x12 grid of 24 images, labeled (A) through (L), showing various textures and patterns. The top row contains images (A) through (F), and the bottom row contains images (G) through (L). The images show a variety of textures including smooth gradients, fine grain, woven fabrics, and geometric patterns.



PRELIMINARY
NOT FOR CONSTRUCTION

GSR Reno Arena

Project Number	05.4889.000
----------------	-------------

Description	Overall Exterior - West

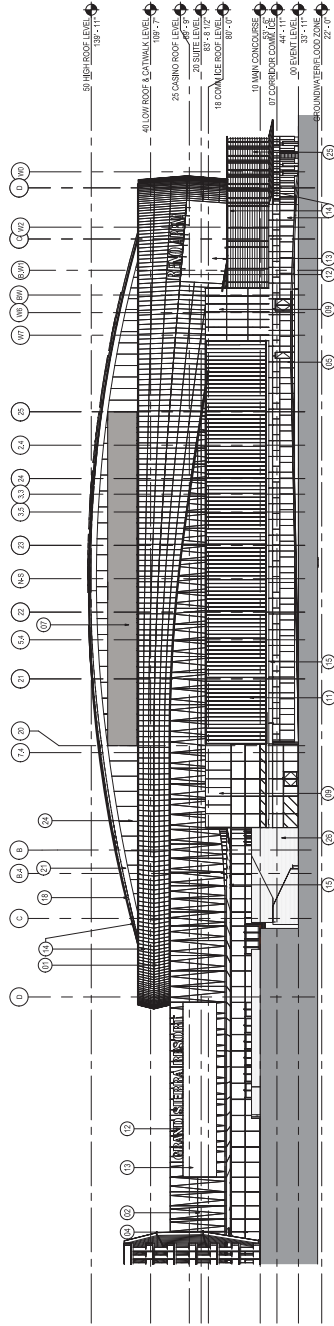
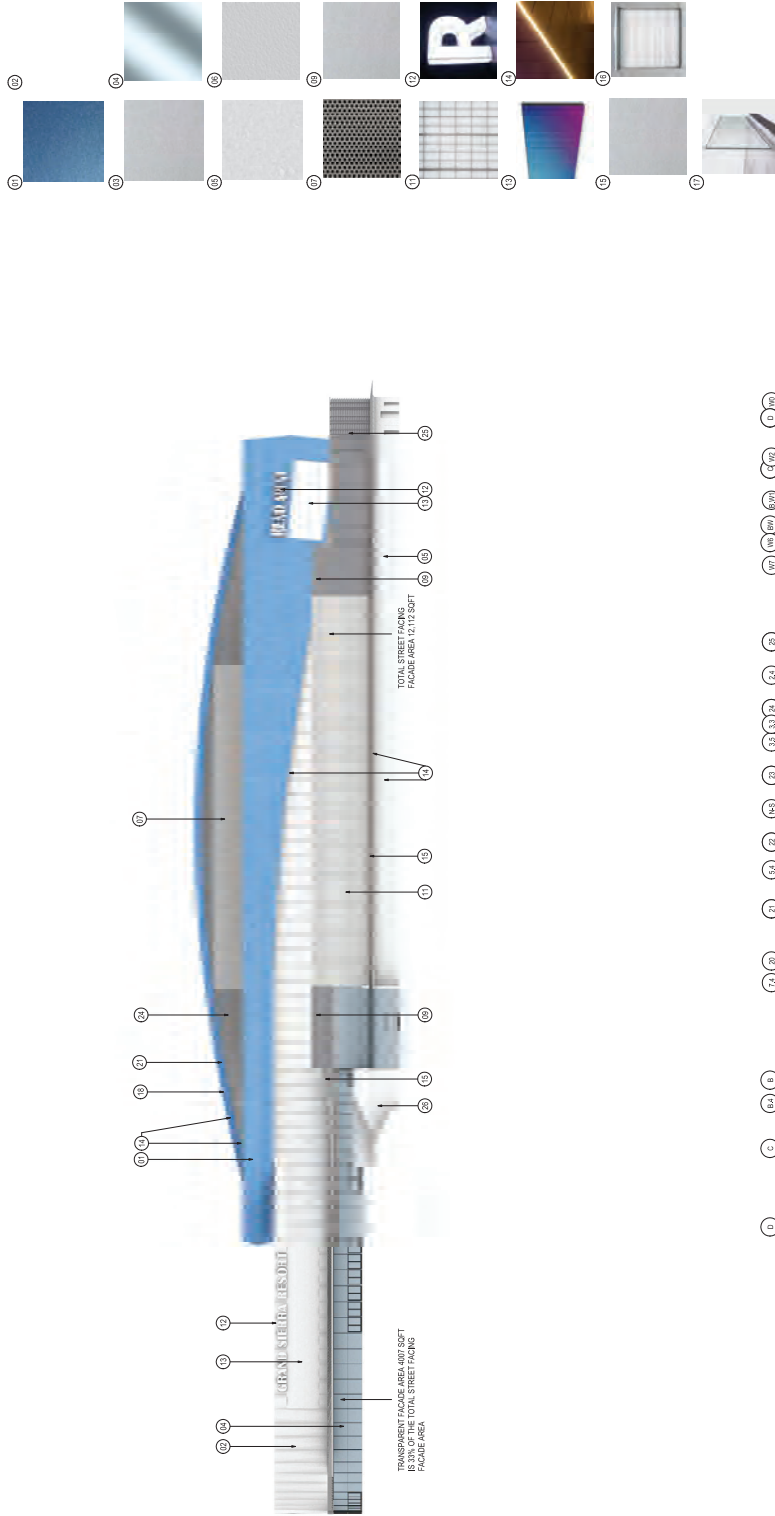
Scale

1" = 30'-0"

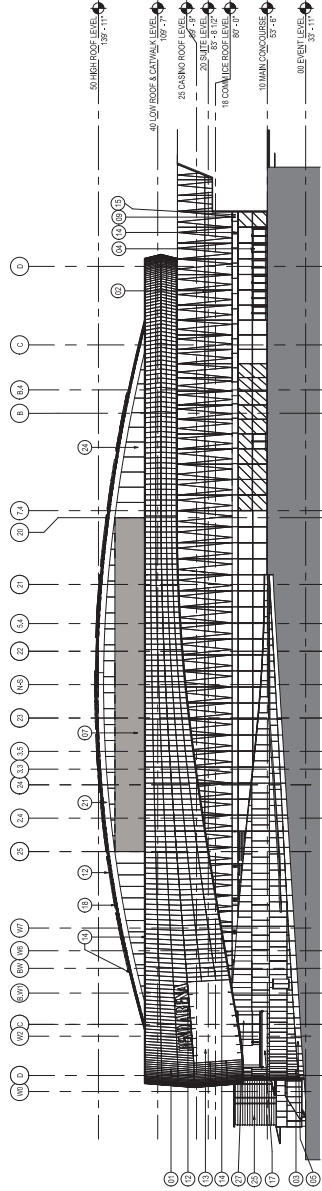
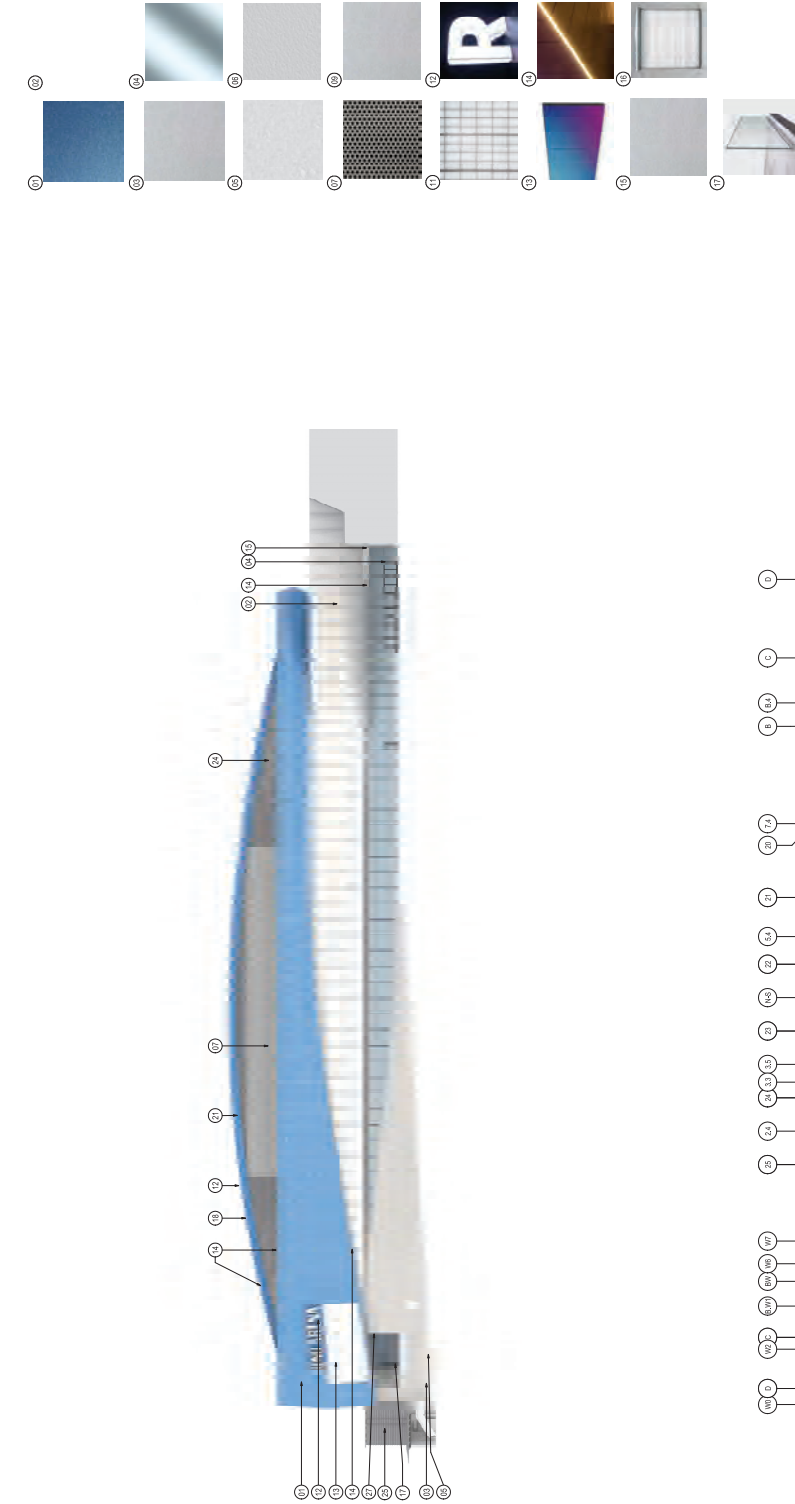
City Approval Stamp

A5.010

- [illegible]



SCALE: 1" = 30'-0"



01 OVERALL EXTERIOR ELEVATION - SOUTH CUP

SCALE: 1" = 30'-0"



Seal / Signature

PRELIMINARY
NOT FOR CONSTRUCTION

GSR Reno Arena

Project Number

Description

OVERALL EXTERIOR - SOUTH

Scale

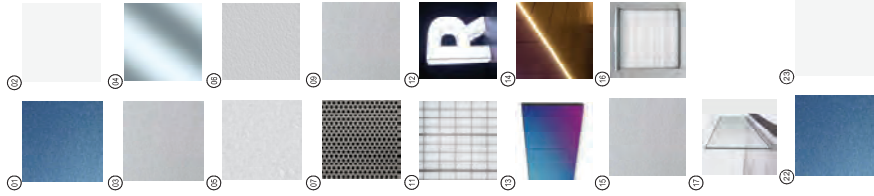
$$1'' = 30' - 0''$$

City Approval Stamp

A5.040.

FAÇADE DESIGN IS PRELIMINARY AND IS CURRENTLY UNDER REVIEW BY THE OWNER. FINAL DESIGN APPROVAL IS PENDING AND MAY BE SUBJECT TO MODIFICATIONS.

SCALE: 1" = 30'-0"



Seal / Signature



A blank coordinate grid with x and y axes. The x-axis is horizontal and the y-axis is vertical, intersecting at the origin (0,0). The grid lines are spaced at intervals of 1 unit.

A5.050.