
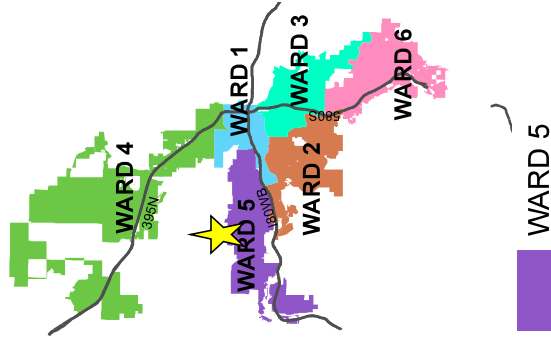


VICINITY MAP

LDC25-00046

(Milnes Family
Zoning Map Amendment)

Subject Site ► 



Development
Services
Department

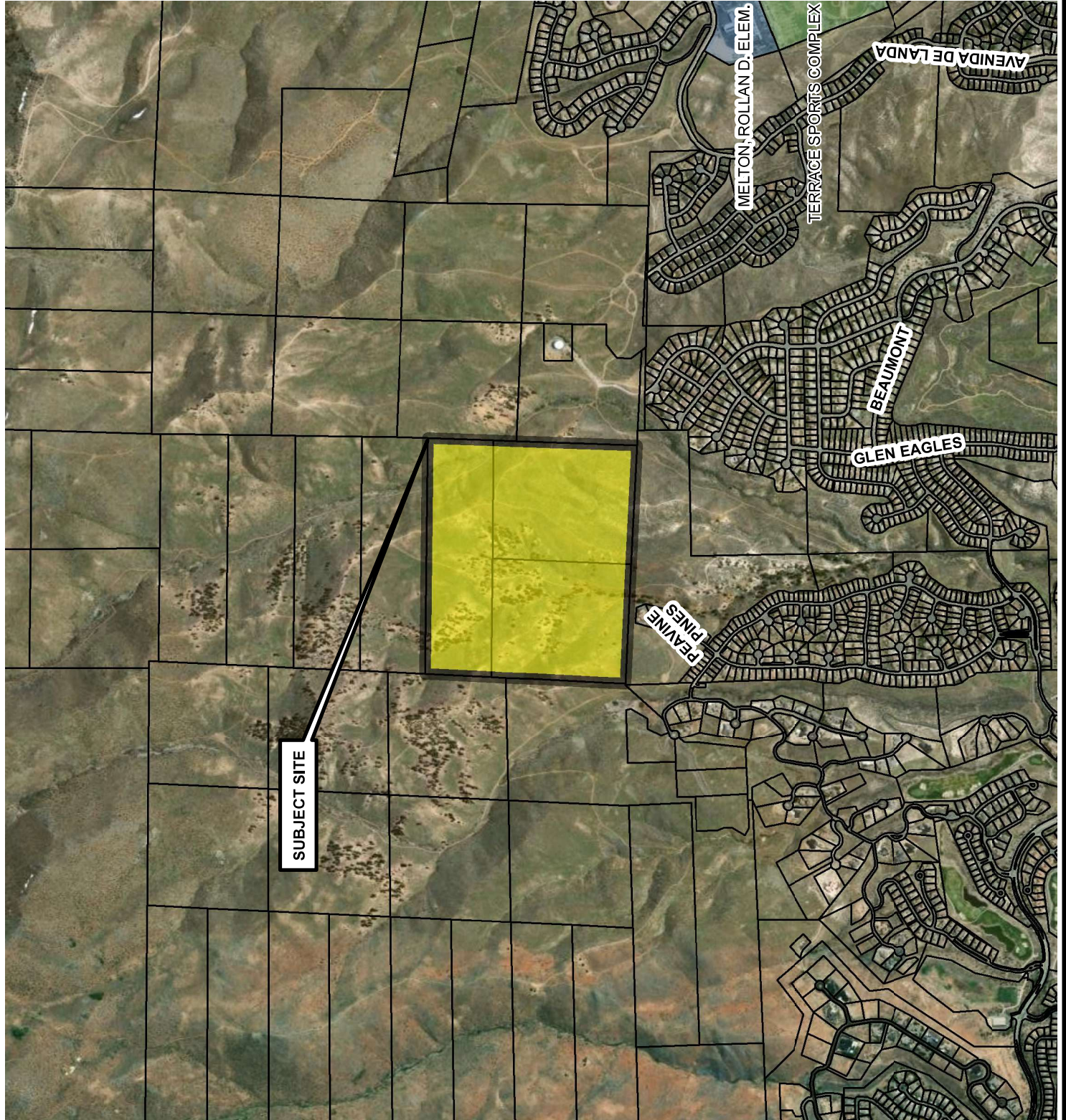


The information herein
is approximate and
is intended for display
purposes only.

Date: March 2025

Scale: 1 inch = 1,500 feet


Exhibit A - Case Maps

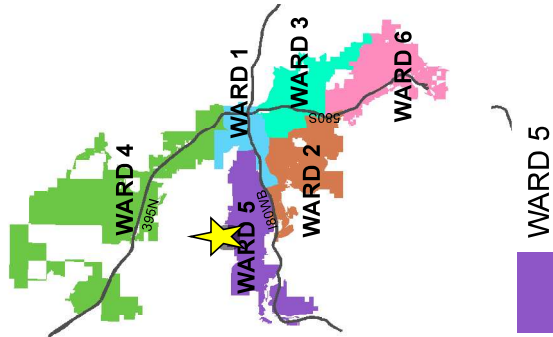


VICINITY MAP

LDC25-00046

(Milnes Family
Zoning Map Amendment)

Subject Site ► 



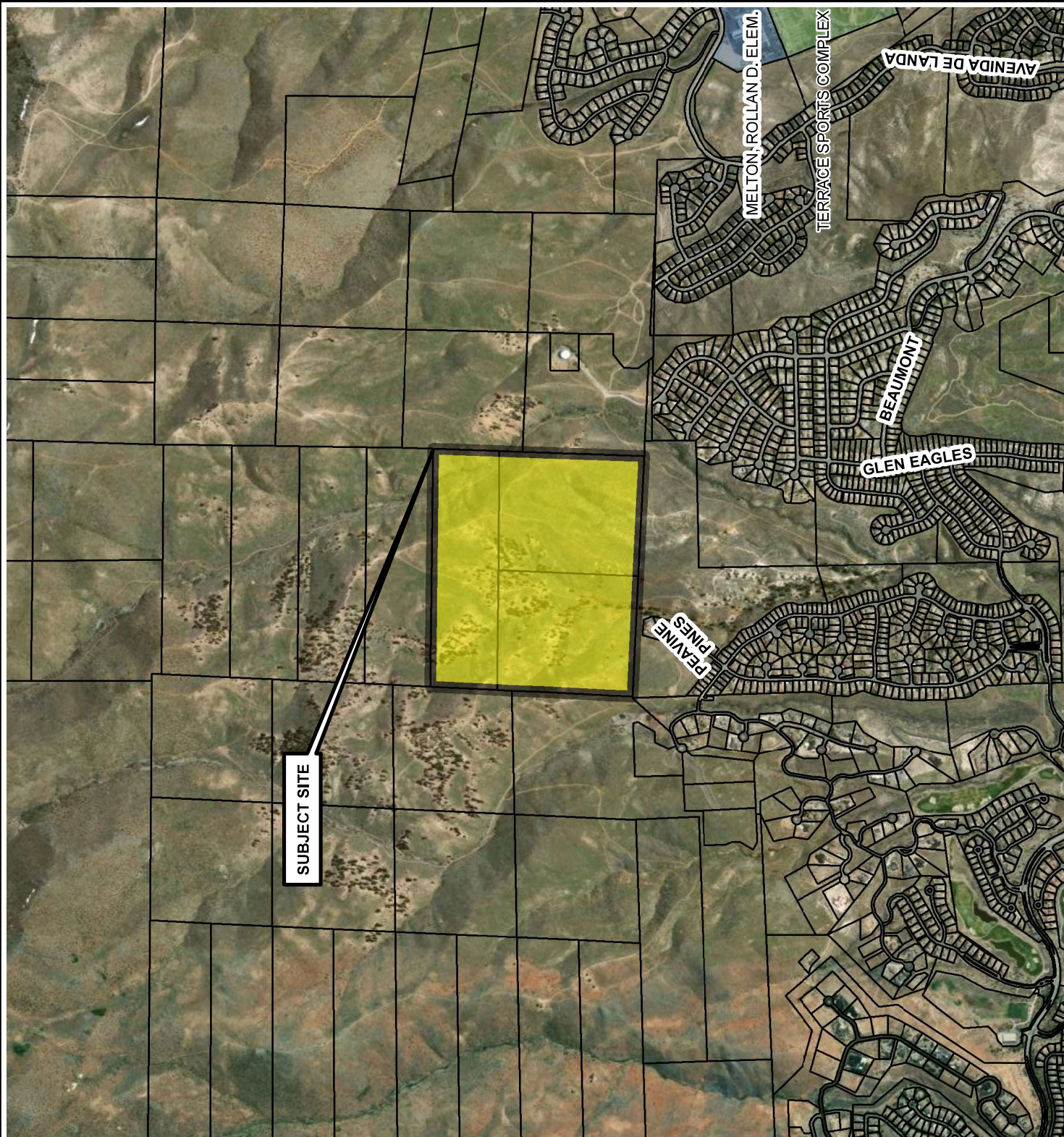
Development
Services
Department



The information herein
is approximate and
is intended for display
purposes only.

Date: March 2025

Scale: 1 inch = 1,500 feet



ZONING MAP




LDC25-00046

(Milnes Family
Zoning Map Amendment)

Subject Site ► 

ZONING = SPD

Zoning Designations

	PUD
	SF-3
	SF-5
	SF-8
	PGOS
	PF
	SPD

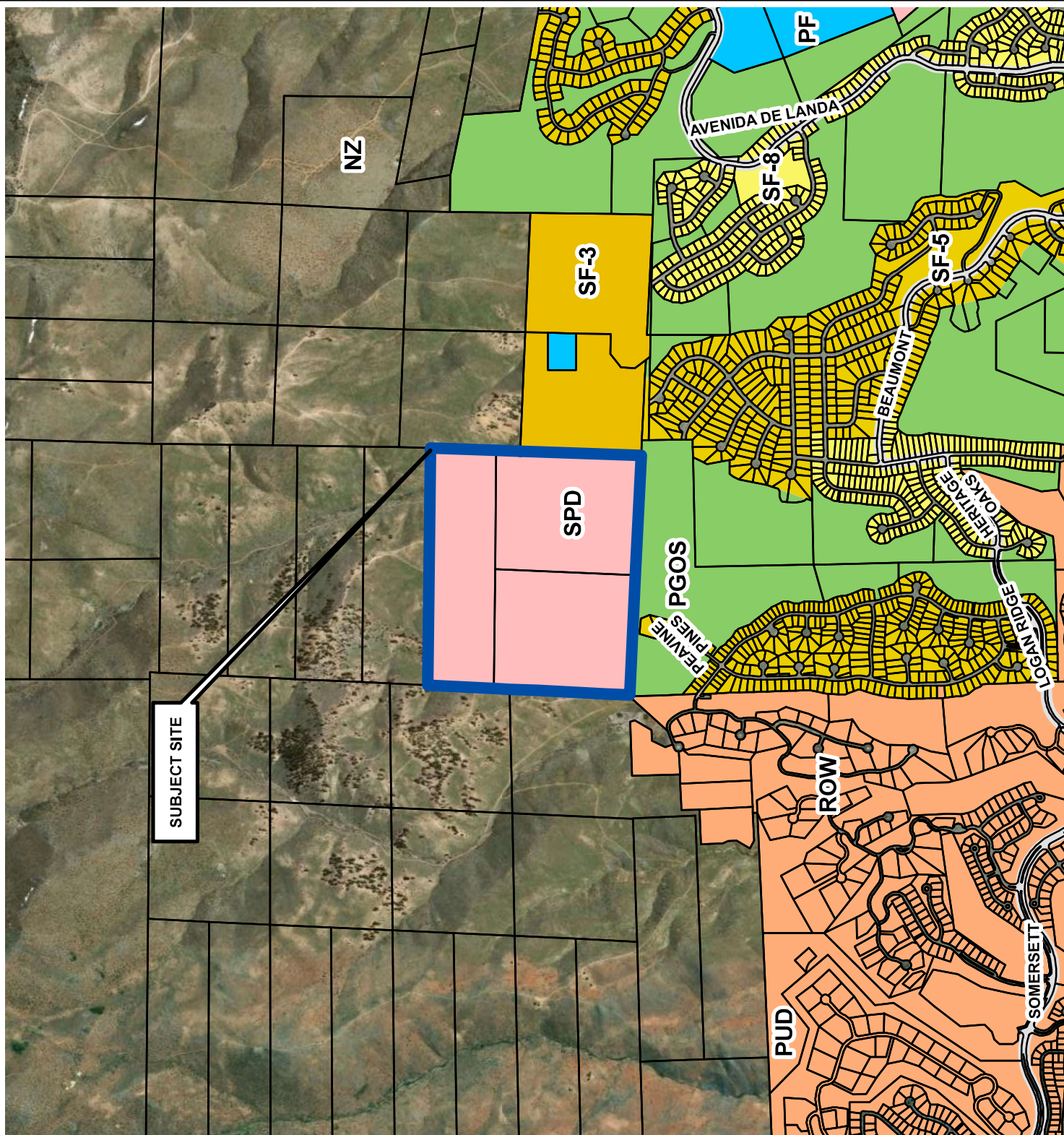


Development
Services
Department

The information herein
is approximate and
is intended for display
purposes only.




DATE: March 2025
SCALE: 1 inch = 1,500 feet

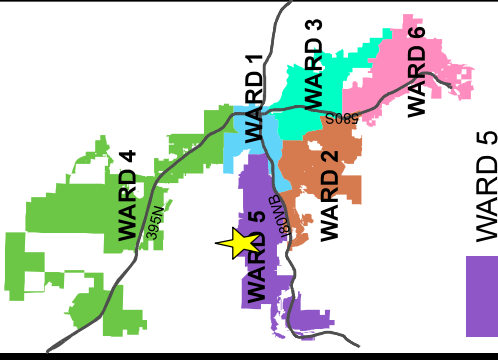


MASTER PLAN MAP

LDC25-00046

(Milnes Family
Zoning Map Amendment)

Subject Site ► 

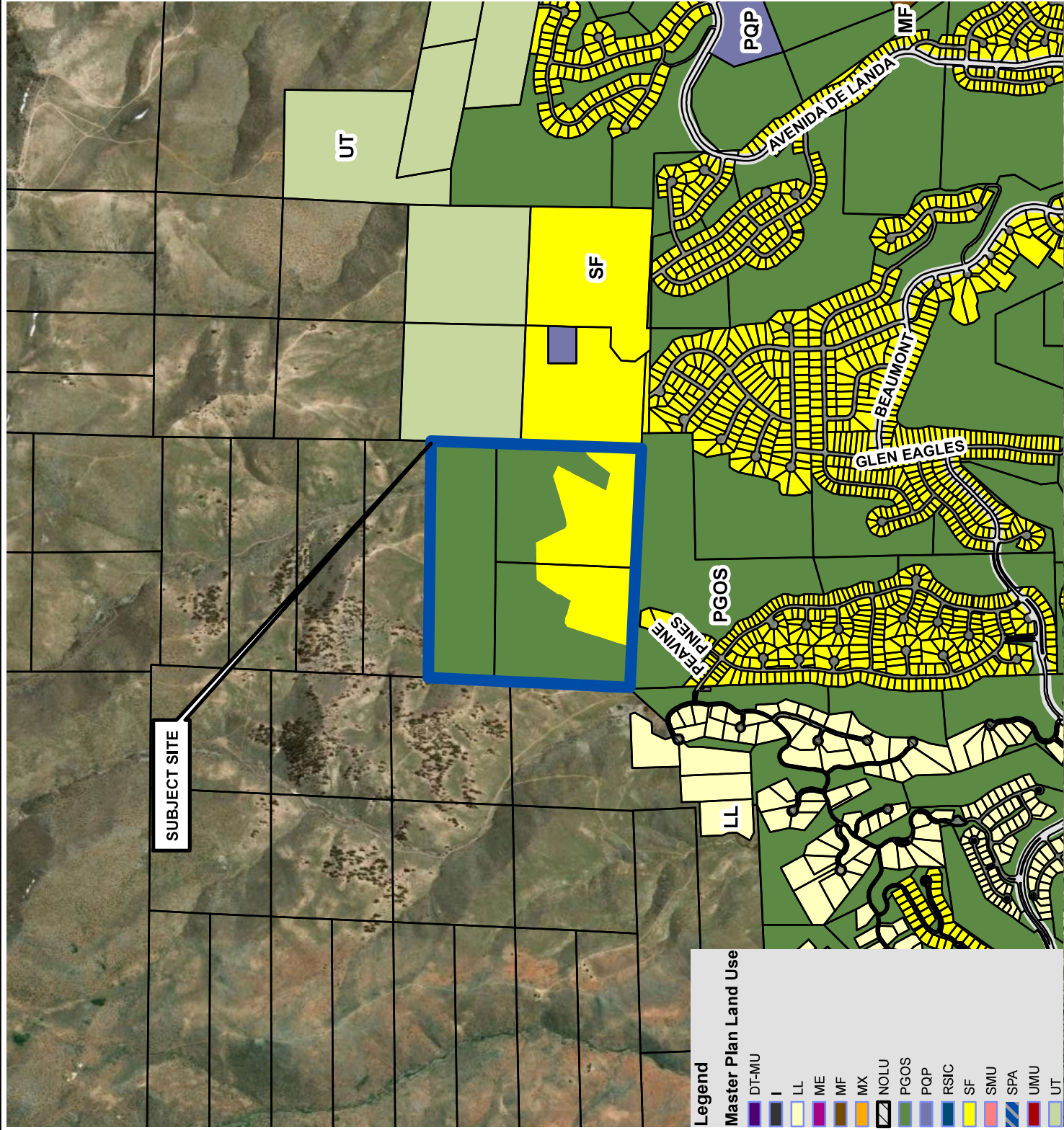


Development
Services
Department



The information herein
is approximate and
is intended for display
purposes only.

Date: March 2025
Scale: 1 inch = 1,500 feet




Legend Master Plan Land Use

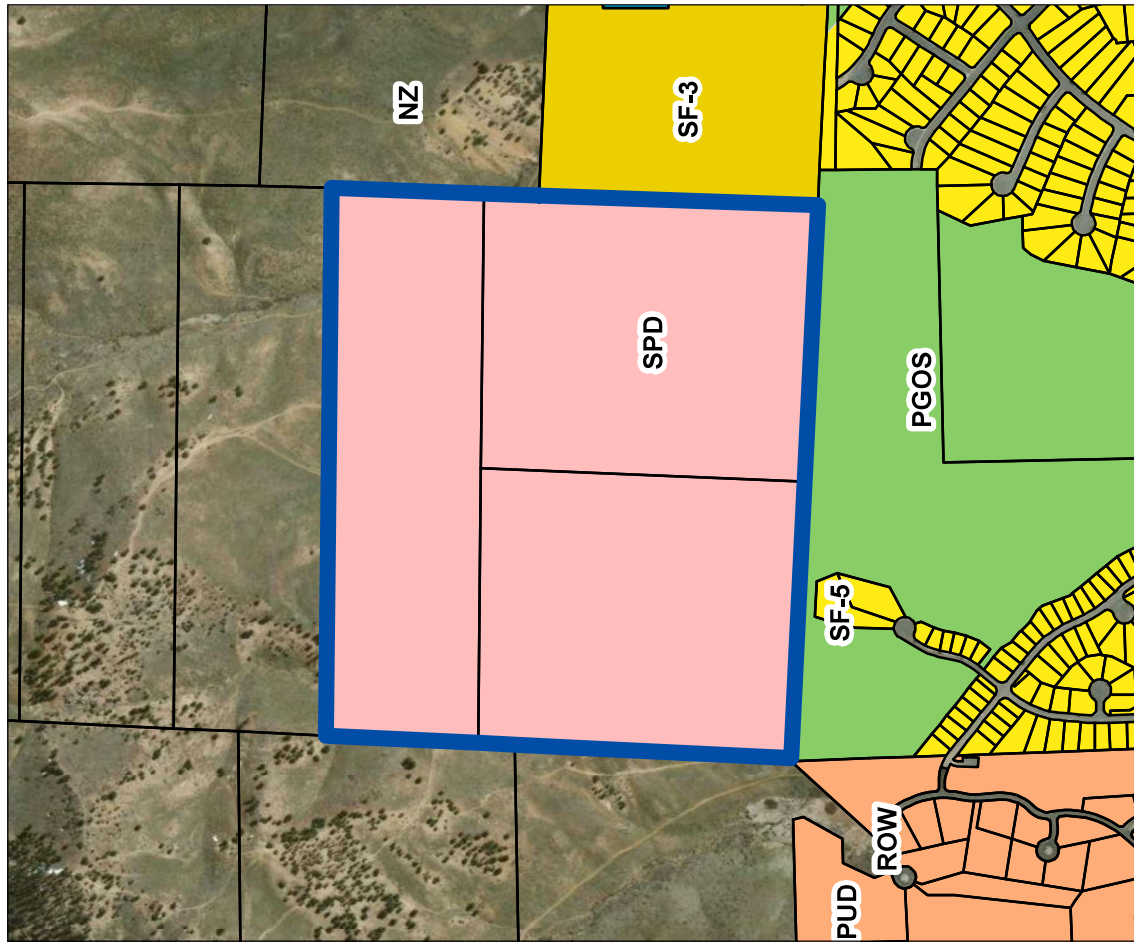
- DT-MU
- I
- LL
- ME
- MF
- MX
- NOLU
- PGOS
- PGP
- RSIC
- SF
- SMU
- SPA
- UMU
- UT

ZONING MAP

LDC25-00046 (Milnes Family Zoning Map Amendment)

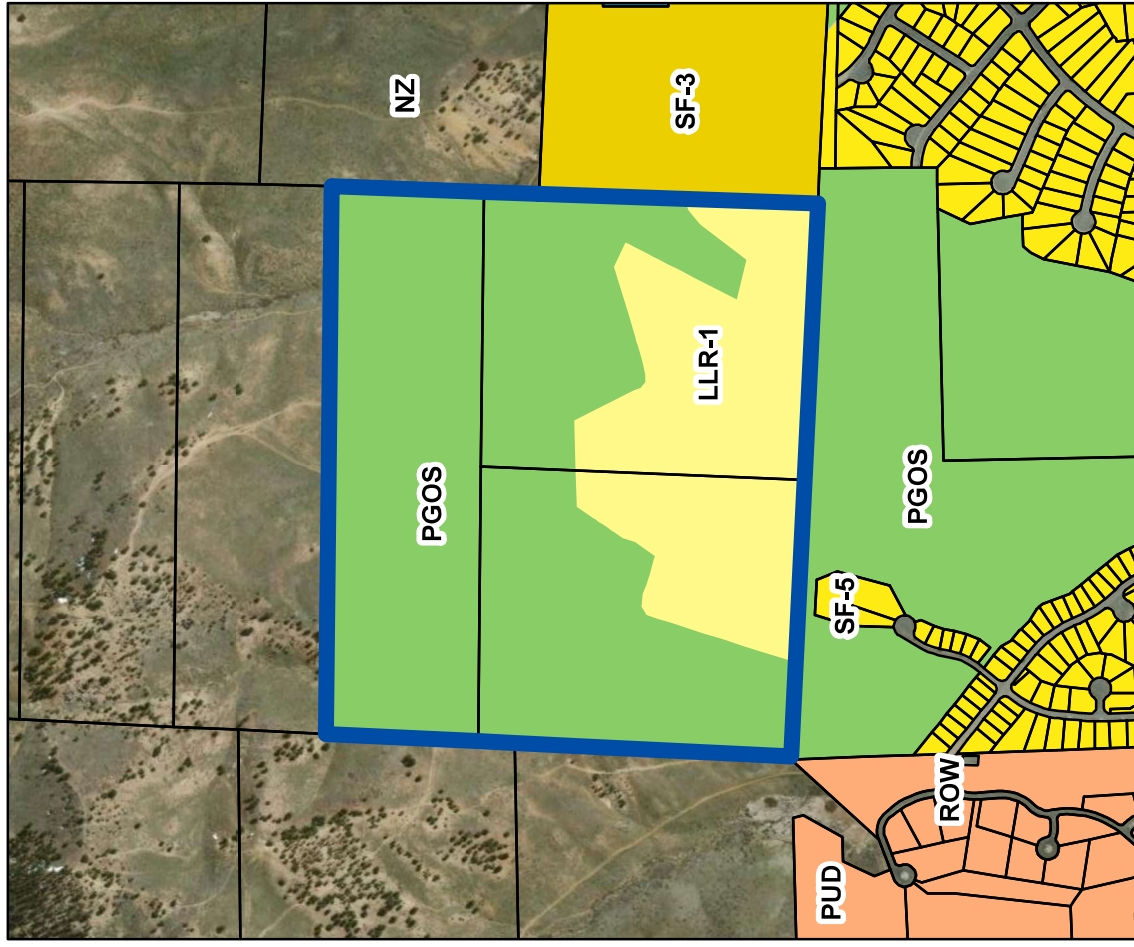
Existing Zoning: SPD

Subject Site 


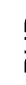







Proposed Zoning: PGOS & LLR-1

Subject Site 



Zoning Designations

	PUD		SF-3		PF		LLR-1
	SF-3		PGOS		SPD		

