



LDC25-00033

NDI Office Rezoning

Reno City Council

April 9, 2025

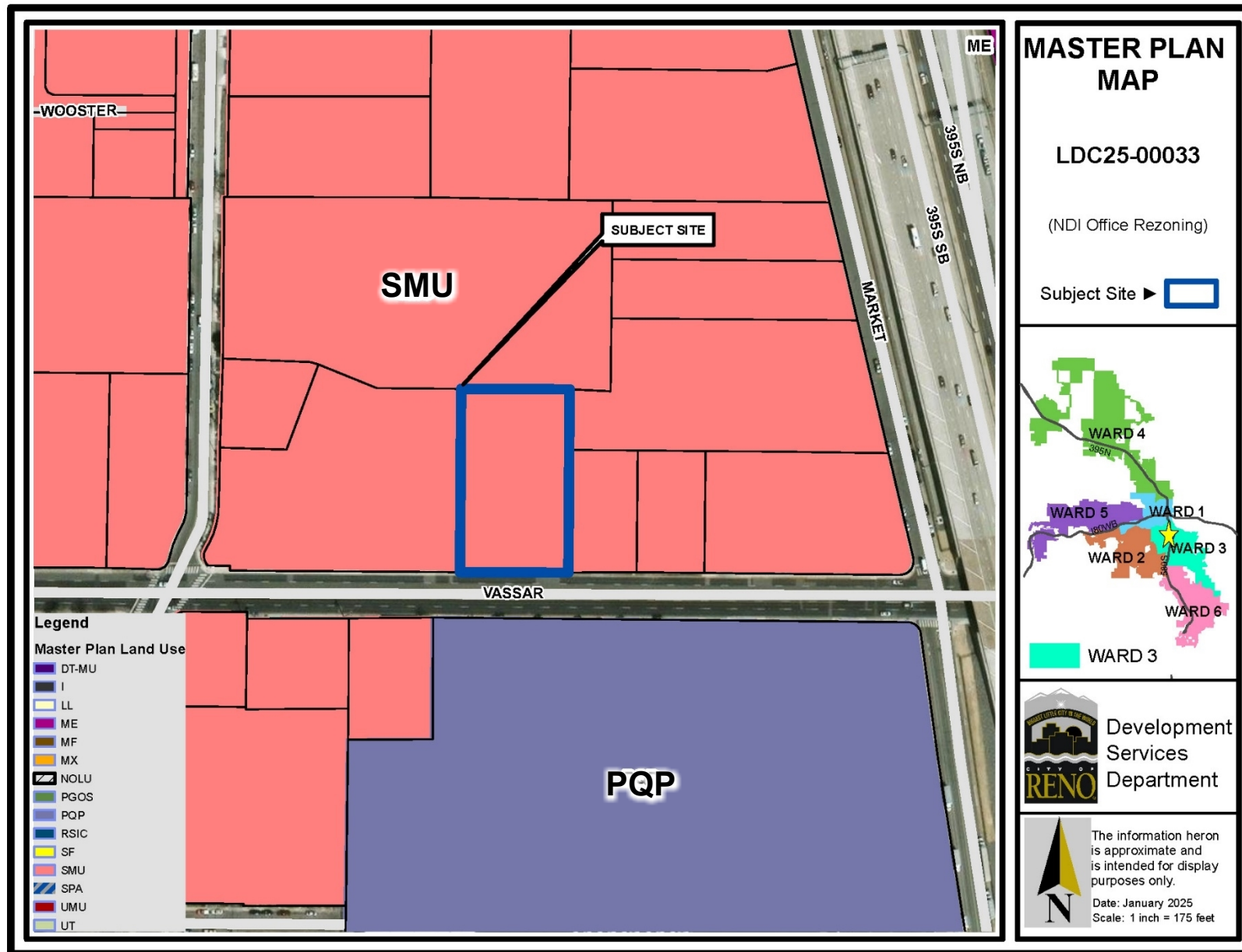


C I T Y O F
RENO

Project Information



- **Site Size:**
 ± 0.99 acres
- **Zoning Map Amendment Request**
from Neighborhood Commercial (NC) to General Commercial (GC)



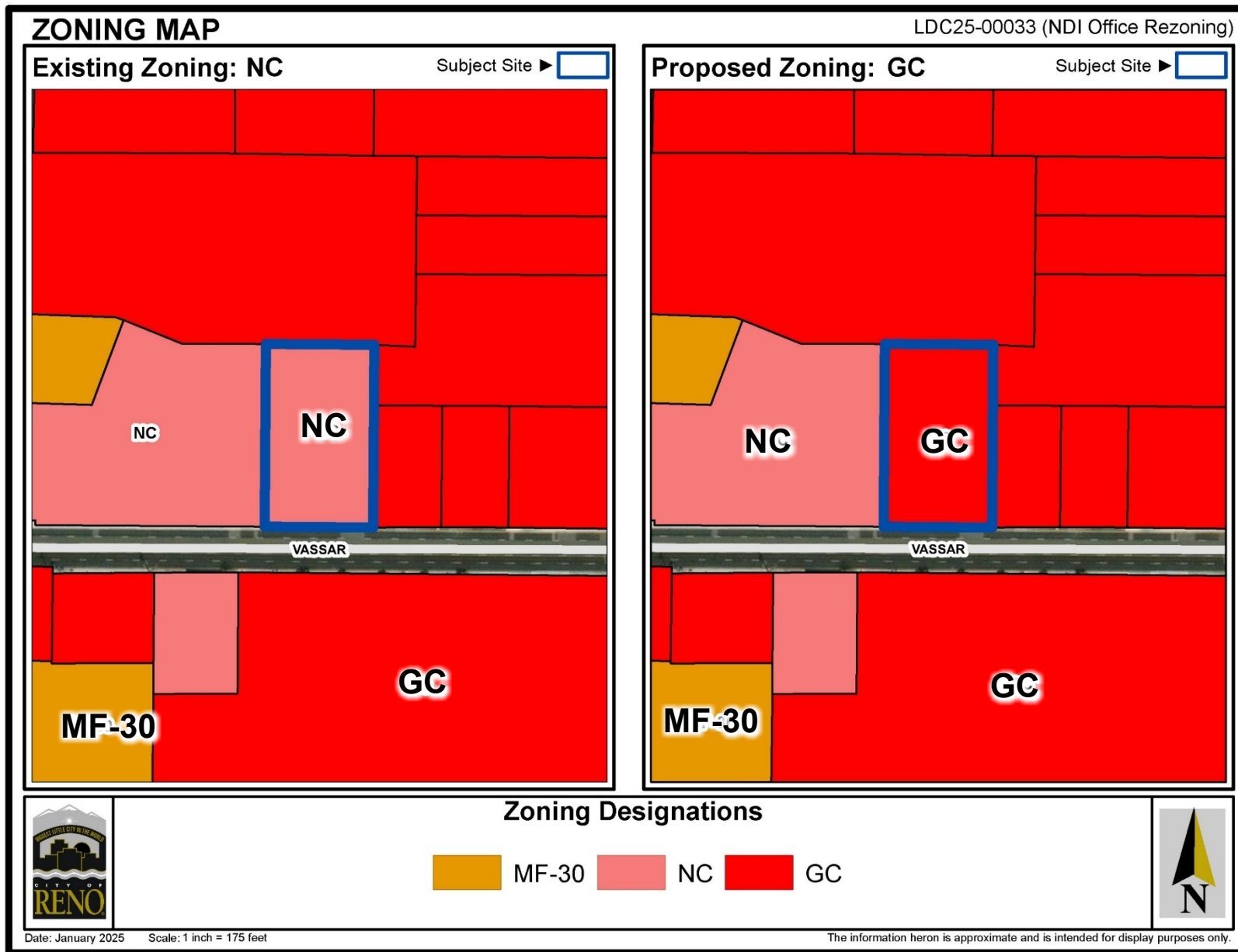
Master Plan

Suburban Mixed-Use (SMU)

Master Plan Policies:

- 1.2C: Existing Businesses
- 2.2B: Underutilized Properties

Zoning District

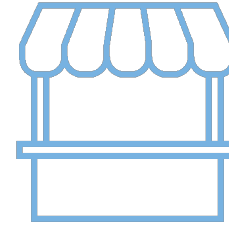


- Neighborhood Commercial (NC) to General Commercial (GC)
- GC is a conforming district within the SMU Master Plan land use designation

Highlight of Uses



Increase residential density consistent with the area



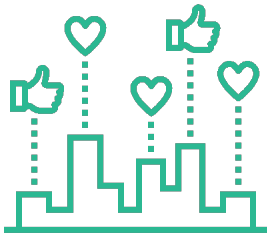
Adds the opportunity for several commercial uses and light industrial uses



Addition of any commercial or industrial use requires a site plan review

Development Standards

	NC	GC
Setbacks (Front/Side/Rear)	10' / 0' / 0'	No change
Max Height	35'	65' *
Max Floor Area Ratio	1.5	None
Density	30 units per acre	45 units per acre



Standard residential
massing and transition
standards apply

* Increased height over 35'
requires additional setback
from adjacent properties

Zoning Map Amendment Findings Recommendation

Findings	Analysis	Staff Review
Conforms with state law NRS Section 278.250(2)	Generally in conformance with NRS	✓ Yes
Conforms with Master Plan	GC zone is conforming with the SMU Master Plan land use designation	✓ Yes

Recommended Motion

I move to adopt Ordinance No. _____.