

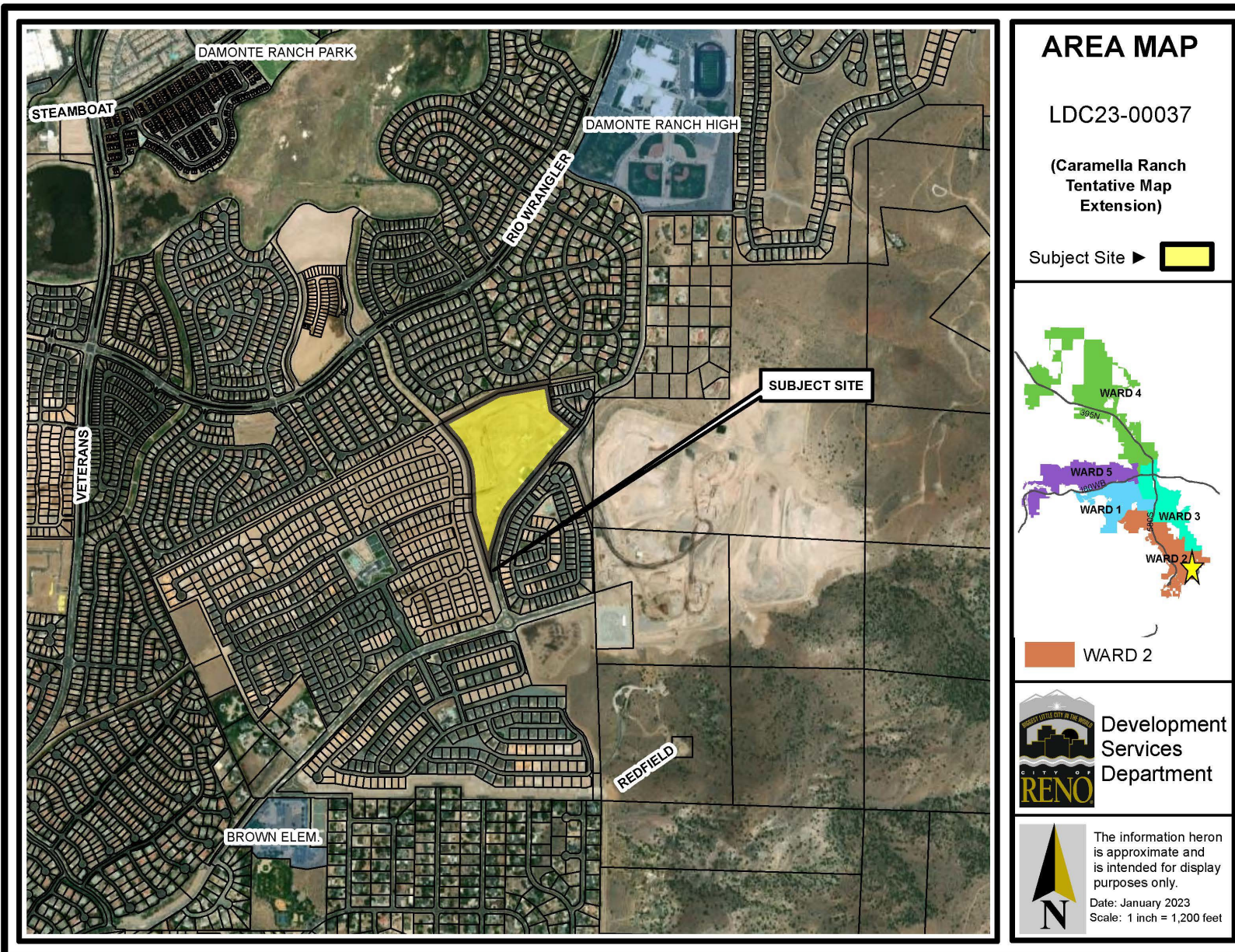
# **LDC23-00037**

## **(Caramella Ranch Tentative Map Extension)**

*Reno Planning Commission*  
*February 1, 2023*



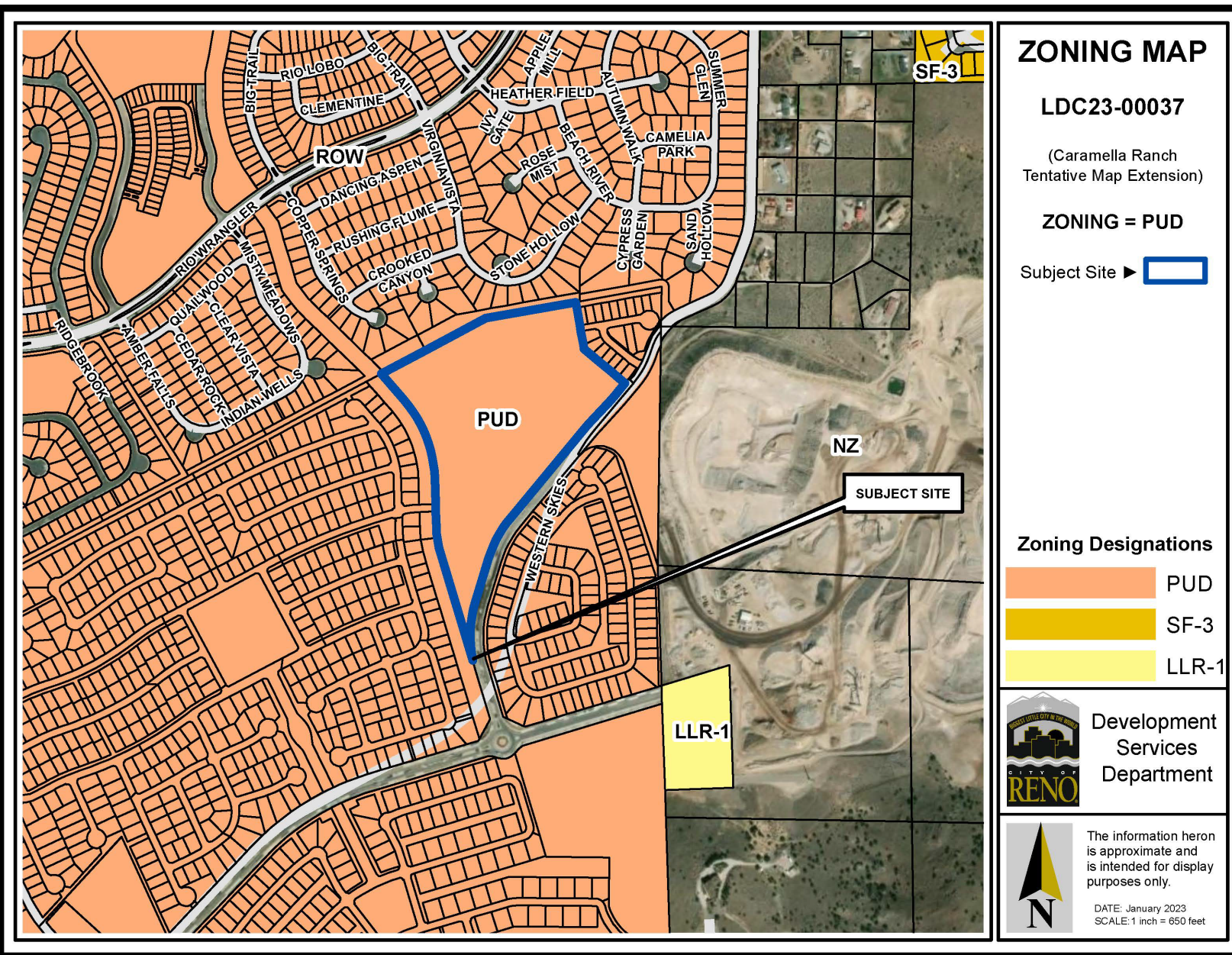




**Site:**

- ±24.36 acre



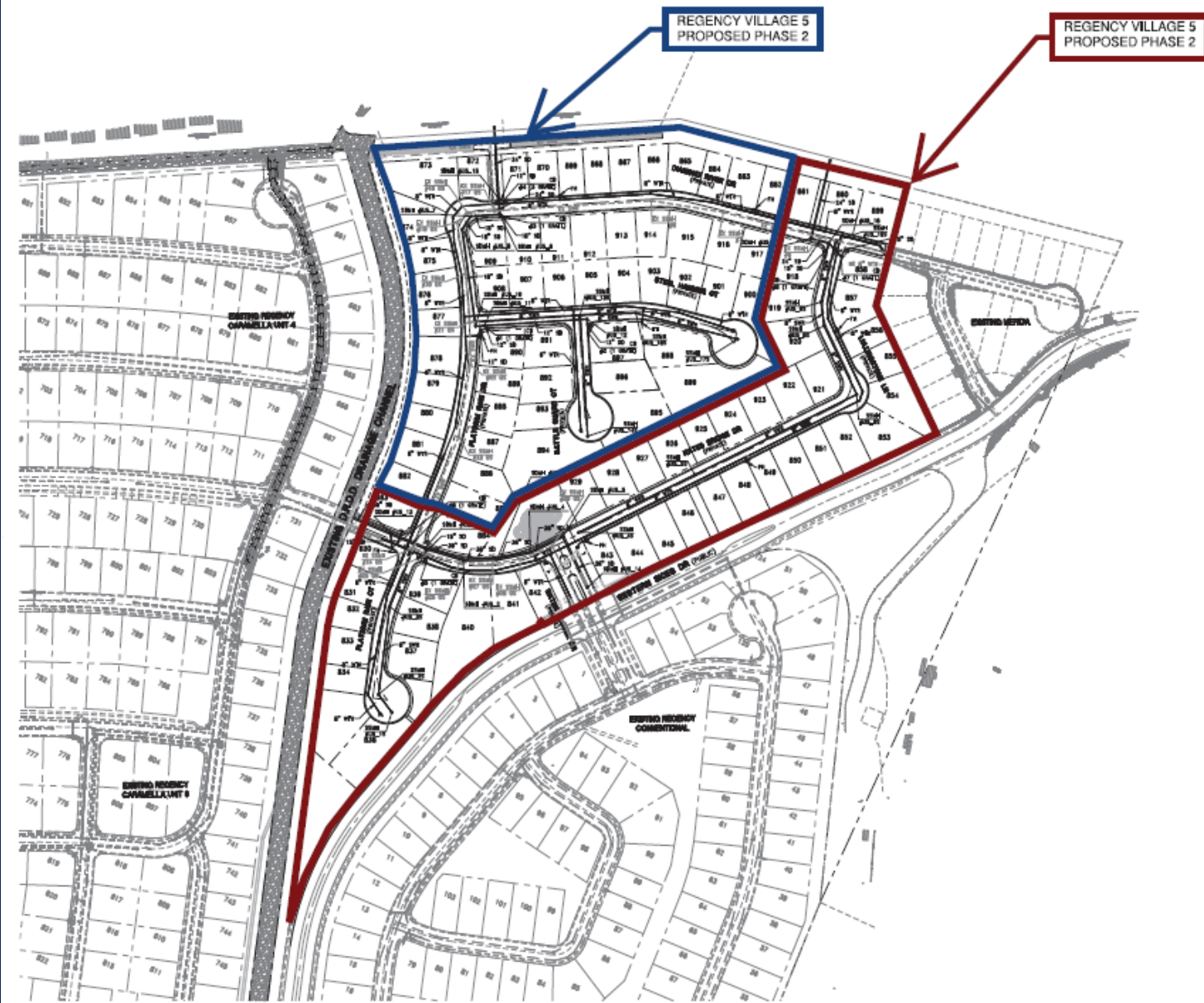


## Request:

### Tentative Map Extension

- A request has been made for a two-year time extension for a previously approved tentative map for 955 single-family residential lots (LDC19-00048 – Caramella Ranch Estates), of which 106 lots remain to be final mapped.





## Background:

- Approved May 1, 2019
- 955 units
- Tentative map expires July 7, 2023
- 106 units remaining
- May split Phase 5 into two phases



## **Recommended Motion**

**Based upon compliance with NRS 278.360, I move to approve a two year time extension on the Caramella Ranch Estates Phase 5 tentative map, subject to original conditions of approval.**