

DEVELOPER:

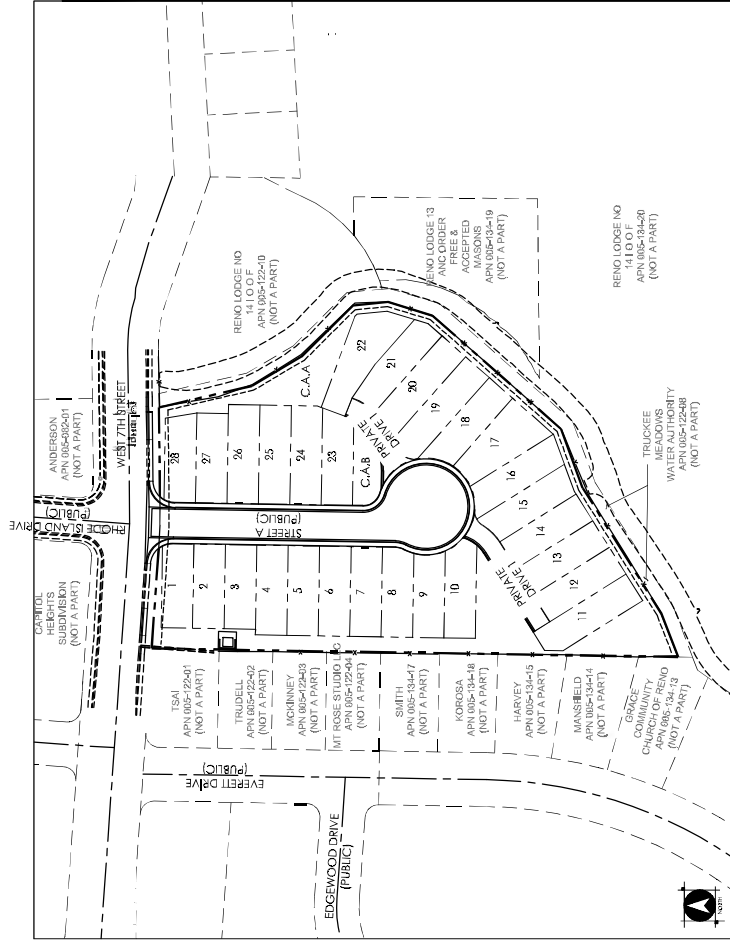
VICINITY MAP
NOT TO SCALE

I, ASHLEY VERLING, DO HEREBY CERTIFY THAT THIS PLAN HAS BEEN PREPARED BY ME OR UNDER MY SUPERVISION AND WAS COMPLETED ON THE 22nd DAY OF JULY, 2024.

ASST. V. R. N. G. 024778

NEVADA STATE PLANE COORDINATE SYSTEM, WEST ZONE, NORTH AMERICAN DATUM OF 1983/1994, HIGH ACCURACY REFERENCE NETWORK (NAD 83/NAHARN), AS DETERMINED USING REAL TIME KINEMATIC (RTK) GPS OBSERVATIONS WITH CORRECTIONS TRANSMITTED BY THE NEVADA GPS NETWORK (NGN). THE BEARING BETWEEN GPS REFERENCE STATION "PR01" - N745000.698 AND "515A" - N727500.137 IS TAKEN AS NORTH 156°46' EAST. ALL DIMENSIONS SHOWN ARE GROUND DISTANCES.
COMPILED BY: GARY W. SCHULTZ DATE: 01/01/99

U.S. GEOLOGICAL SURVEY, 3000330, USGS ONE METER x250458 NV RENO
CARSON Q11 2017 U.S. GEOLOGICAL SURVEY



SHEET NO.	DWG. NO.	DRAWING DESCRIPTION
1	T-1	TITLE SHEET
2	DN-1	DEMOLITION PLAN AND BLOCK PLAN
3	UB-1	UTILITY PLAN
4	G-1	PRELIMINARY GRADING PLAN
5	G-2	PRELIMINARY GRADING PLAN
6	CS-1	PRELIMINARY CROSS SECTIONS
7	LI	PRELIMINARY LANDSCAPE PLAN

WOOD ROGERS
BUILDING RELATIONSHIPS ONE PROJECT AT A TIME
1361 Corporate Boulevard Tel 775.828.4068
Reno, NV 89502 Fax 775.828.4068

4402.001

JULY 2024

SHEET T-1 OF 7

SITE PLAN
NOT TO SCALE

RENO LODGE 13 ANC
ORDER FREE &
ACCEPTED MASONS
APN 005-134-19
(NOT A PART)

RENO LODGE
NO 14100F
APN 005-134-20
(NOT A PART)

RENO LODGE 13 ANC
ORDER FREE &
ACCEPTED MASONS
APN 005-134-19
(NOT A PART)

RENO LODGE
NO 14100F
APN 005-122-10
(NOT A PART)

ANDERSON
APN 005-082-01
(NOT A PART)

TRUCKEE MEADOWS
WATER AUTHORITY
APN 005-122-08
(NOT A PART)

CAPITOL
HEIGHTS
SUBDIVISION
(NOT A PART)

GRACE
COMMUNITY
CHURCH OF RENO
APN 005-134-13
(NOT A PART)

GRACE
COMMUNITY
CHURCH OF REN
APN 005-134-13
(NOT A PART)

MANSFIELD
APN 005-134-14
(NOT A PART)

HARVEY
APN 005-134-15
(NOT A PART)

KOROSA
APN:005-134-18

APN 005-122-04
(NOT A PART)
SMITH

MCKINNEY
PN 005-122-03
(NOT A PART)

TRUDELL
PN 005-122-02
(NOT A PART)
TO REMAIN

TS/1
PN 005-122-01
(NOT A PART)

10
EASEMENT PER DOC. 10
TO REM

2400 W. 7TH STREET
DEMOLITION PLAN



JULY, 2024

SHEET DM-1 OF 7

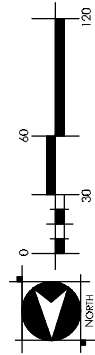


- KEY NOTES:**

- [illegible]

LEGEND:

- A.C. PAVING
TO BE DEMOLISHED**
- P.C.C. CONCRETE
TO BE DEMOLISHED**
- EXISTING BUILDING
TO BE DEMOLISHED
(1.9.04.4.5.1)**



RENO LODGE 13 ANC
ORDER FREE &
ACCEPTED MASONS
APN 005-134-19
(NOT A PART)

RENO LODGE
NO 14100F
APN 005-122-10
(NOT A PART)

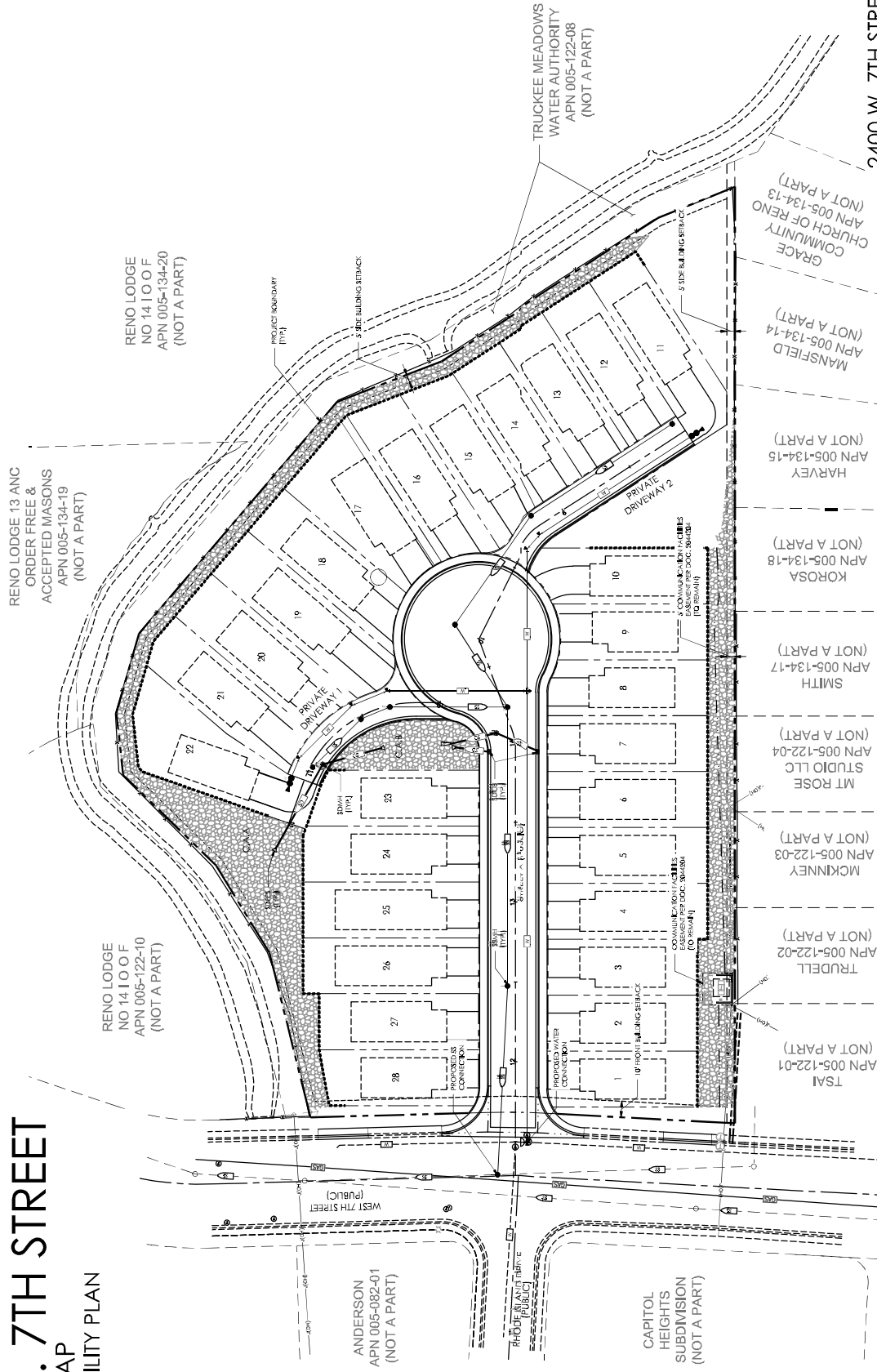
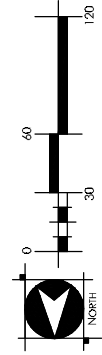
TRUCKEE MEADOWS
WATER AUTHORITY
APN 005-122-08
(NOT A PART)

WOOD RODGERS
BUILDING RELATIONSHIPS ONE PROJECT AT A TIME
1361 Corporate Boulevard Tel 775.828.4068
Reno, NV 89502 Fax 775.828.4066

JULY, 2024

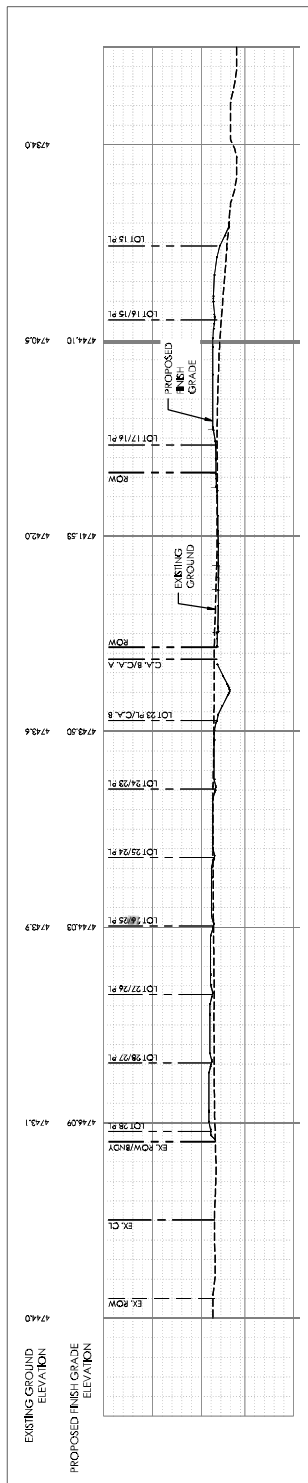
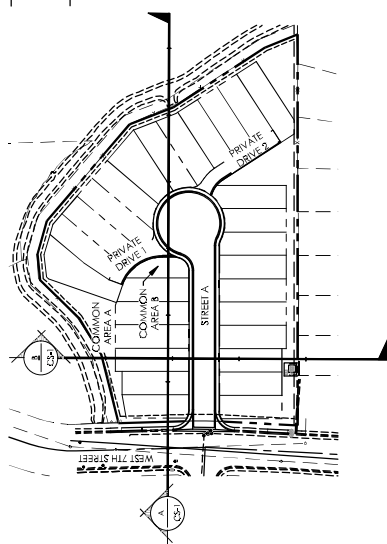
SHEET U-1 OF 7

NOTE:
ALL STREETS ARE PUBLIC UNLESS OTHERWISE NOTED.
ALL SANITARY SEWER IS PUBLIC (CITY OF RENO).
ALL STORM DRAIN IS PRIVATE (H.O.A.)
ALL WATER IS PUBLIC (TMWA).

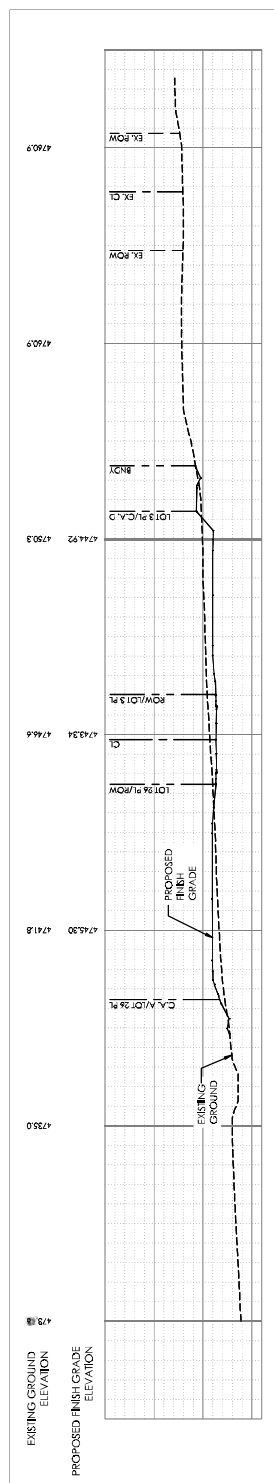


NOTE: ADD 4700' TO ALL ELEVATIONS

07/22/2024



CROSS SECTION A



CROSS SECTION B

2400 W. 7TH STREET
PRELIMINARY CROSS SECTIONS



WOOD ROGERS
BUILDING RELATIONSHIPS ORIENTED AT A TIME
1361 Corporate Boulevard Tel 775.828.4068
Reno, NV 89502 Fax 775.828.4066

4402.001 JULY, 2024

SHEET CS-1 OF 7

