

COLD SPRINGS RV STORAGE



1	PRELIMINARY SITE/UTILITY PLAN
2	PRELIMINARY GRADING PLAN
3	PRELIMINARY CROSS SECTIONS
4	PRELIMINARY LANDSCAPE PLAN

SHEET INDEX

PRELIMINARY SITE/UTILITY PLAN

WHITE LAKE

STAFF GAUGE TO MEASURE SEDIMENT LOAD

STAFF GAUGE TO MEASURE SEDIMENT LOAD

NOTES

- 1) ADD 5000 TO ALL SPOT ELEVATIONS.
- 2) MAINTENANCE AND STAFF GAUGES TO BE IMPLEMENTED WITH FINAL DESIGN/CONSTRUCTION.
- 3) ALL SPOT ELEVATIONS TO BE COMPLETED. DIGITIZED LIMIT MAY ALTER BASE DATA.

- 1) ADD 5000 TO ALL SPOT ELEVATIONS.
- 2) MAINTENANCE AND STAFF GAUGES TO BE IMPLEMENTED WITH FINAL DESIGN/CONSTRUCTION.
- 3) FINAL WETLAND STUDY TO BE COMPLETED. DIGITIZED LIMIT MAY ALTER BASED UPON OUTCOME.

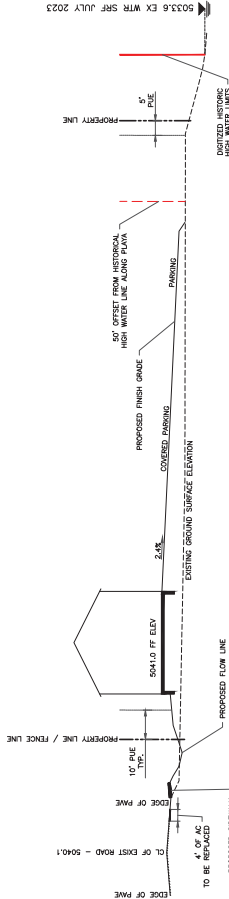
[illegible]

TEC
CIVIL
ENGINEERING
CONSULTANTS
INC. 10000 W. 10th Ave. Suite 100
Denver, CO 80231

COLD SPRINGS RV STORAGE

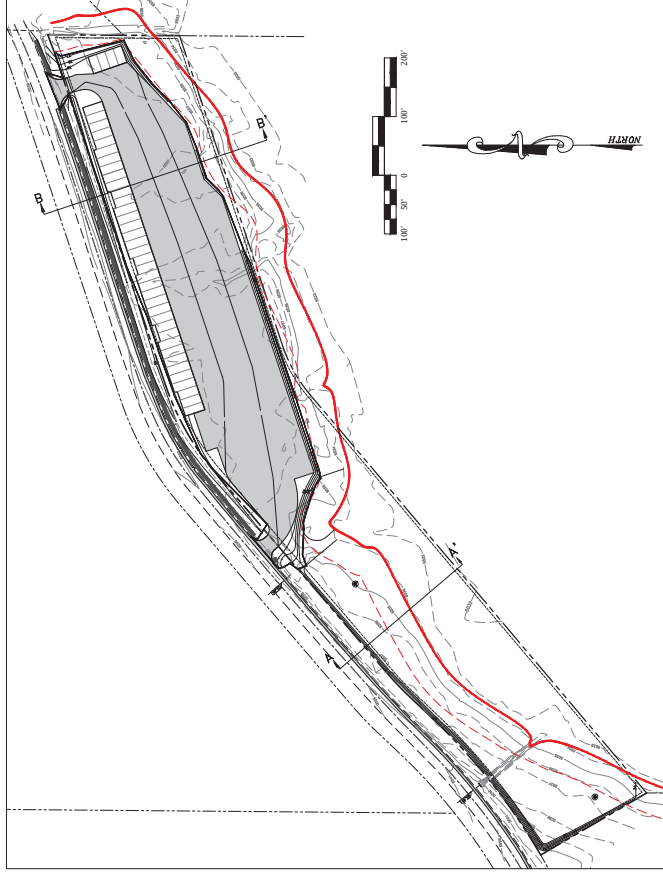
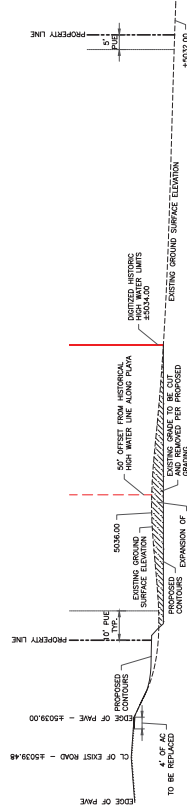
- LEGEND
- PROPERTY BOUNDARY
 - EXISTING ELEVATION
 - PROPOSED ELEVATION
 - 50' FT OFFSET FROM THE WHITE LAKE PLAZA
 - EXISTING WHITE LAKE PLAZA/STREET: HIGHER MARK
 - AND 5000 TO ALL SPOT ELEVATION
 - EXISTING WATER LEVEL

CROSS SECTION B-B'



20' 10' 0 20'
SCALE: 1" = 20' HORIZONTAL
SCALE: 1" = 2' VERTICAL

CROSS SECTION A-A'



100' 50' 0 100' 200'
SCALE: 1" = 100' HORIZONTAL
SCALE: 1" = 2' VERTICAL

NORTH



ENGINEER
TEC CIVIL ENGINEERING CONSULTANTS
1000 N. RENO AVENUE, SUITE A
RENO, NEVADA 89501

PRELIMINARY CROSS SECTIONS



SHEET 3 of 4
PRELIMINARY CROSS SECTIONS
SCALE: 1" = 20' HORIZONTAL
SCALE: 1" = 2' VERTICAL
JOB # RENT TOWNSEND