

NORTH ELEVATION
SCALE 1/8" = 1'-0"

ARTICULATION
VARIED ROOF / PARAPET HEIGHT
VARIED BUILDING MATERIALS
WINDOW OPENINGS
WALL PLANE OFFSETS
PROJECTED BUILDING MASS

COLOR PALETTE

| | |
|--------------|-------------------|
| #005030 | HORIZONTAL SIDING |
| Green Forest | |
| #aaa9c | VERTICAL SIDING |
| Pewter Gray | |
| #828173 | ROOFING & TRIM |
| Quaker Gray | |

18.04.1003 (C)(2) – ARTICULATION ELEMENTS.

FRONT ELEVATION (5):

- VARIED ROOF / PARAPET HEIGHT
- VARIED BUILDING MATERIALS – VERTICAL METAL SIDING, HORIZONTAL METAL SIDING, CONCRETE
- WINDOW OPENINGS
- WALL PLANE OFFSETS
- PROJECTED BUILDING MASS

WEST ELEVATION (3):

- WINDOW OPENINGS
- VARIED BUILDING MATERIALS
- TEXTURE / COLOR CHANGES. THE HORIZONTAL SIDING, VERTICAL SIDING, CONCRETE AND WINDOWS / TRIM WILL BE DIFFERENT BUT COMPLIMENTARY COLORS.

SOUTH ELEVATION (3):

- VARYING ROOF HEIGHT
- WINDOW OPENINGS
- VARYING ROOF FORMS. THE GABLE OVER THE ENTRY DOORS IS DIFFERENT THAN THE RETREATING MONO-SLOPE.

EAST ELEVATION (3):

- VARYING ROOF FORMS. GABLE END, CROSSING MONO-SLOPE ON THE WESTERN SIDE, RETREATING MONO-SLOPE ALONG THE FRONT ELEVATION.
- WALL PLANE OFFSETS. THE ARTICULATION FOOTPRINT ALONG THE FRONT ELEVATION AND THE WALL PLANE OF THE WESTERN MONO-SLOPE.
- TEXTURE / COLOR CHANGES. THE HORIZONTAL SIDING, VERTICAL SIDING AND WINDOWS / TRIM WILL BE DIFFERENT BUT COMPLIMENTARY COLORS.

18.04.1003 (C)(3) GROUND LEVEL INTEREST.

FRONT ELEVATION IS 135'-4" 40% OF FRONTAGE WIDTH TO BE 4' TALL WINDOWS.
40% = 54.13'.

PROPOSED = (5) 48" WIDE WINDOWS AND (7) 60" WIDE WINDOWS = 55'

ADDITIONAL DESIGN STANDARDS – 18.04.1103(C)(2) – BUILDING ARTICULATION

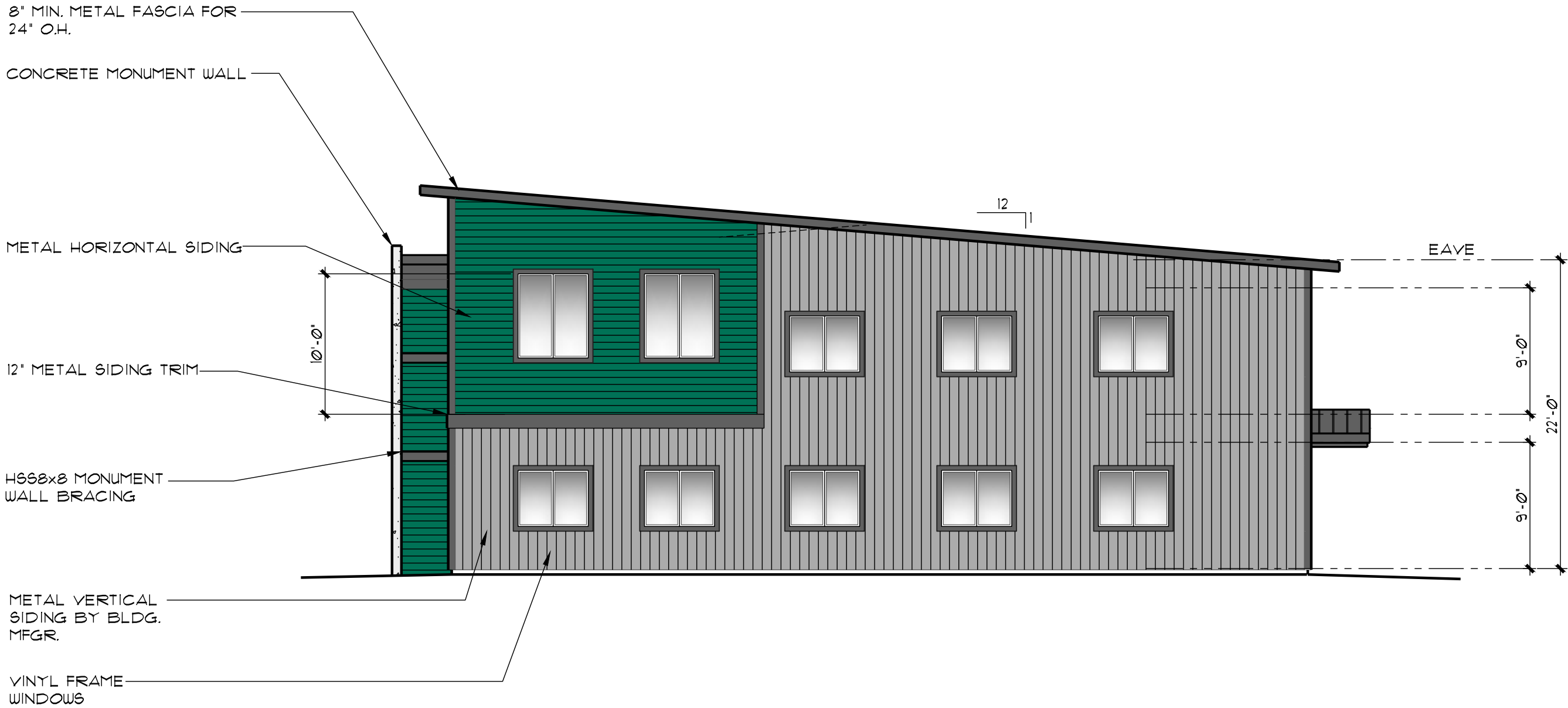
FRONT ELEVATION.

a. HORIZONTAL ARTICULATION

WALL HEIGHT (EAST SIDE) = 22'-0" REQUIRED PLANE OFFSET = 15% = 3'-3 1/2"
WALL LENGTH GRID A TO GRID C = 44' -0"
WALL PLANE CHANGE GRID C2 TO GRID C3 = 3'-4"

b. VERTICAL ARTICULATION

WALL HEIGHT (EAST SIDE) = 22'-0" REQUIRED HEIGHT CHANGE = 15% = 3'-3 1/2"
WALL HEIGHT GRID C = 17'-2" = 4'-10"



WEST ELEVATION
SCALE 1/8" = 1'-0"

Revisions

| | |
|---|--|
| △ | |
| △ | |
| △ | |

| | |
|-------------|----------|
| Date | 8/6/2024 |
| Drawn | K2/JW |
| Checked | BTK |
| Project No. | 24-229 |

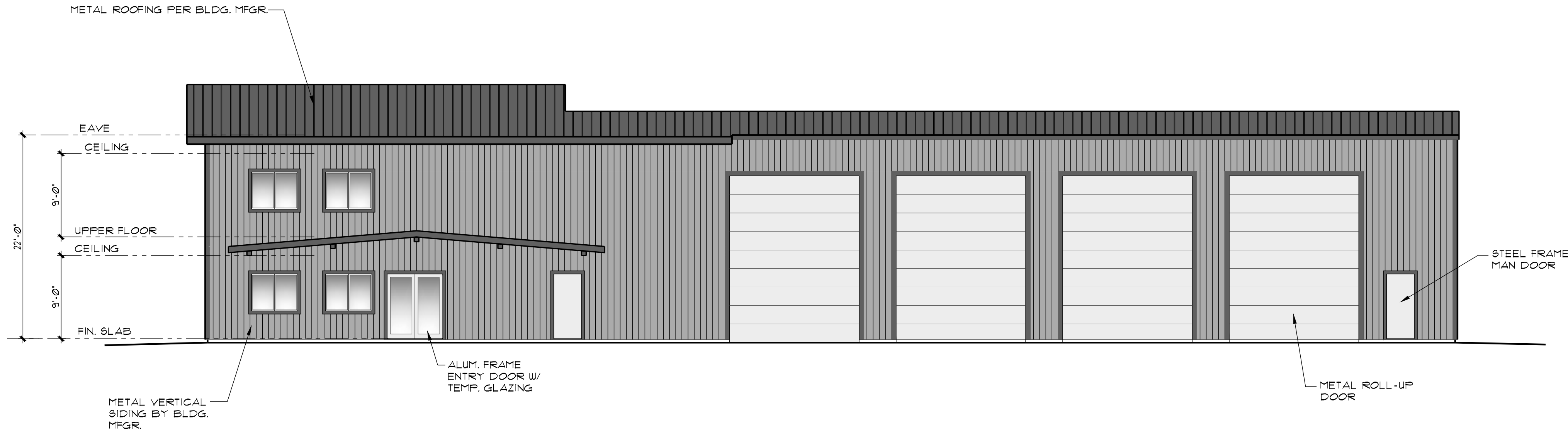
Revisions

| | |
|---|--|
| △ | |
| △ | |
| △ | |

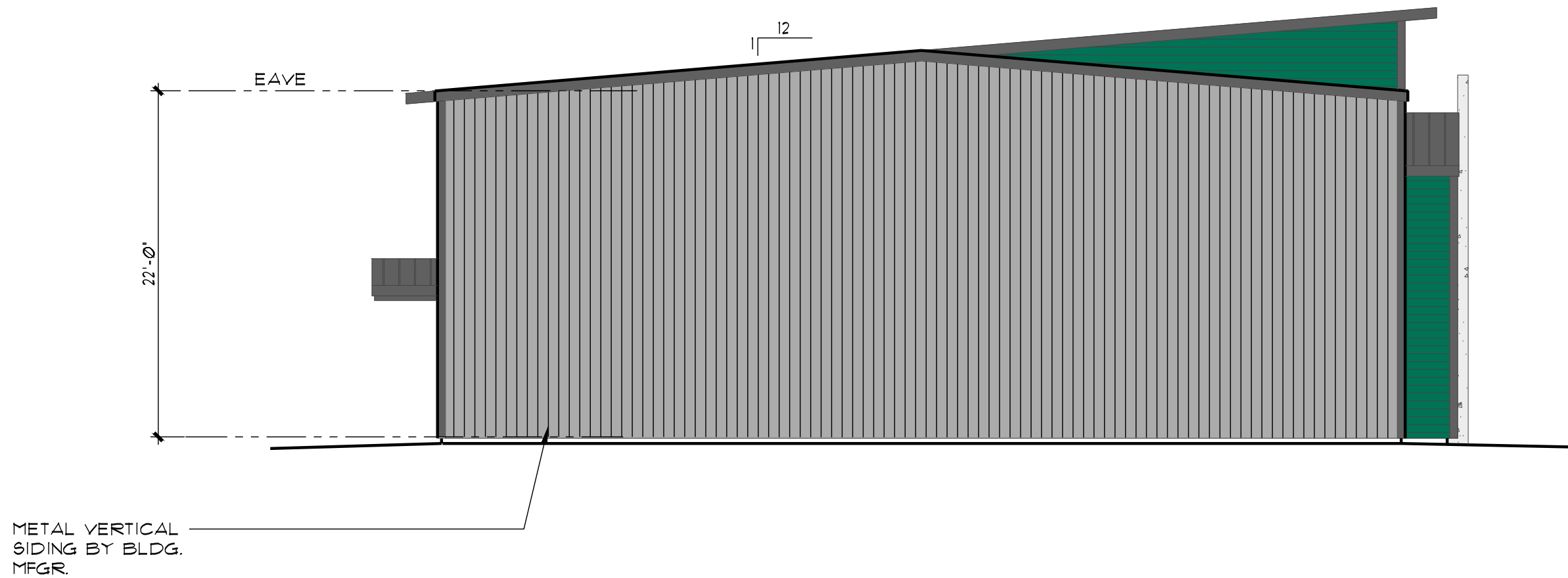
| | |
|-------------|----------|
| Date | 8/6/2024 |
| Drawn | K2/JW |
| Checked | BTk |
| Project No. | 24-229 |

Elevations

A-5



SOUTH ELEVATION
SCALE 1/8" = 1'-0"



EAST ELEVATION
SCALE 1/8" = 1'-0"

COLOR PALETTE

| | |
|--------------|-------------------|
| #005030 | HORIZONTAL SIDING |
| Green Forest | |
| #a9a9a9 | VERTICAL SIDING |
| Pewter Gray | |
| #828173 | ROOFING & TRIM |
| Quaker Gray | |