

PORTION OF SECTIONS 2 & 3  
T19N - R19E

002-04

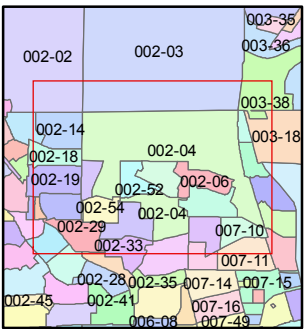
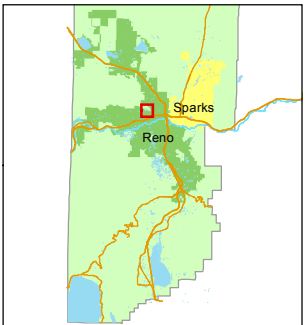
STATE OF NEVADA  
**WASHOE COUNTY**  
ASSESSOR'S OFFICE  
Michael E. Clark, Assessor

1001 East Ninth Street  
Building D  
Reno, Nevada 89512  
(775) 328-2231



Feet  
0 100 200 300 400

1 inch = 400 feet



created by: KSB 07/12/2011

last updated: SR 6/6/17

area previously shown on map(s)

NOTE: This map was prepared for the use of the Washoe County Assessor for assessment and illustrative purposes only. It does not represent a survey of the premises. No liability is assumed as to the sufficiency or accuracy of the data delineated hereon.

