



Truckee River Vision Plan Overview



C I T Y O F
RENO

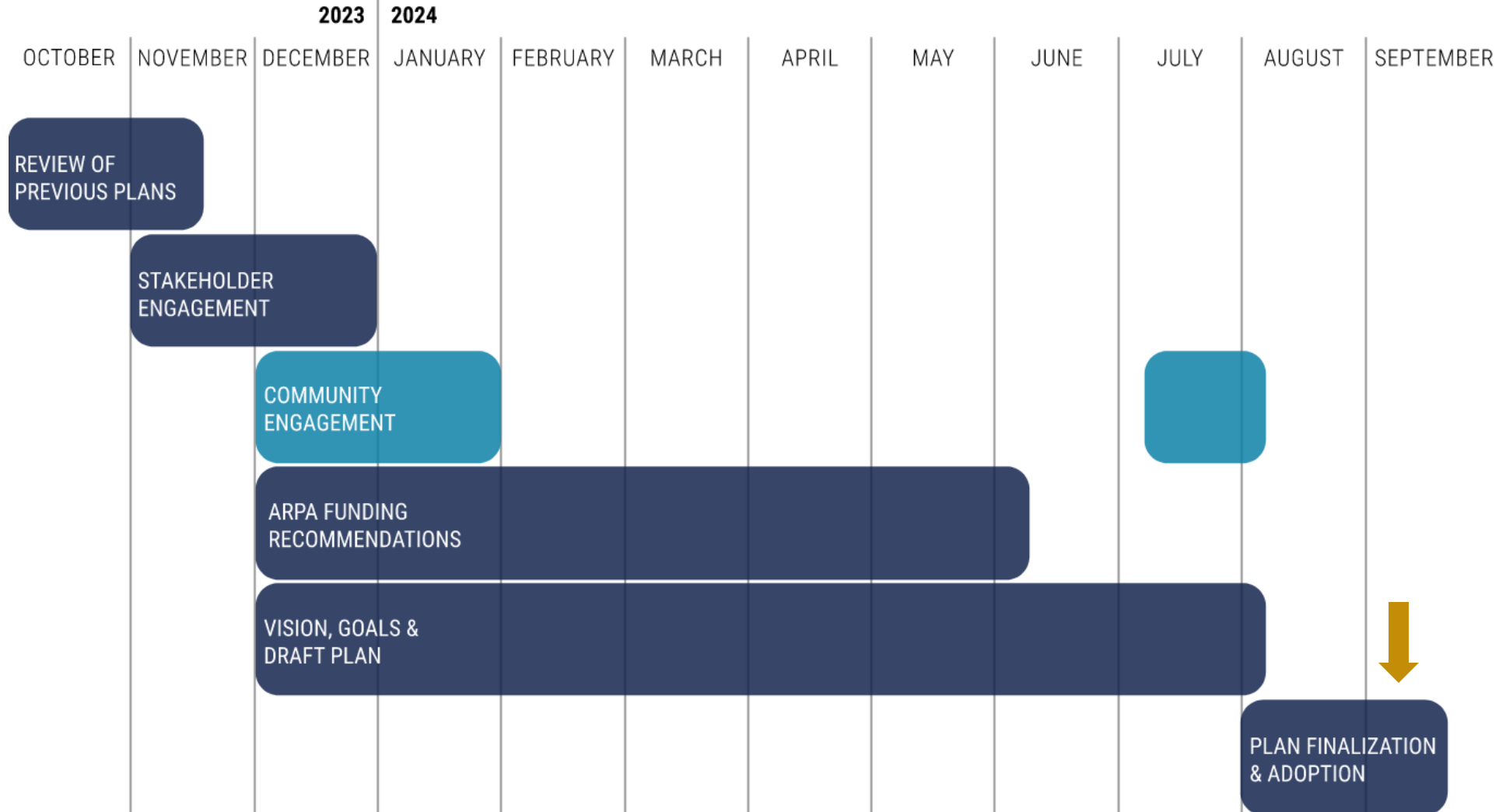
Truckee River Vision Plan

This is a visionary plan, delivering immediate results:

“The City and County are seeking a cohesive plan for the Truckee River and adjacent land as well as an implementation and financing plan to guide current and future investment.”

This plan will focus on economic development strategies, quality of life improvements, and attractions on the River.

Truckee River Vision Plan | Schedule



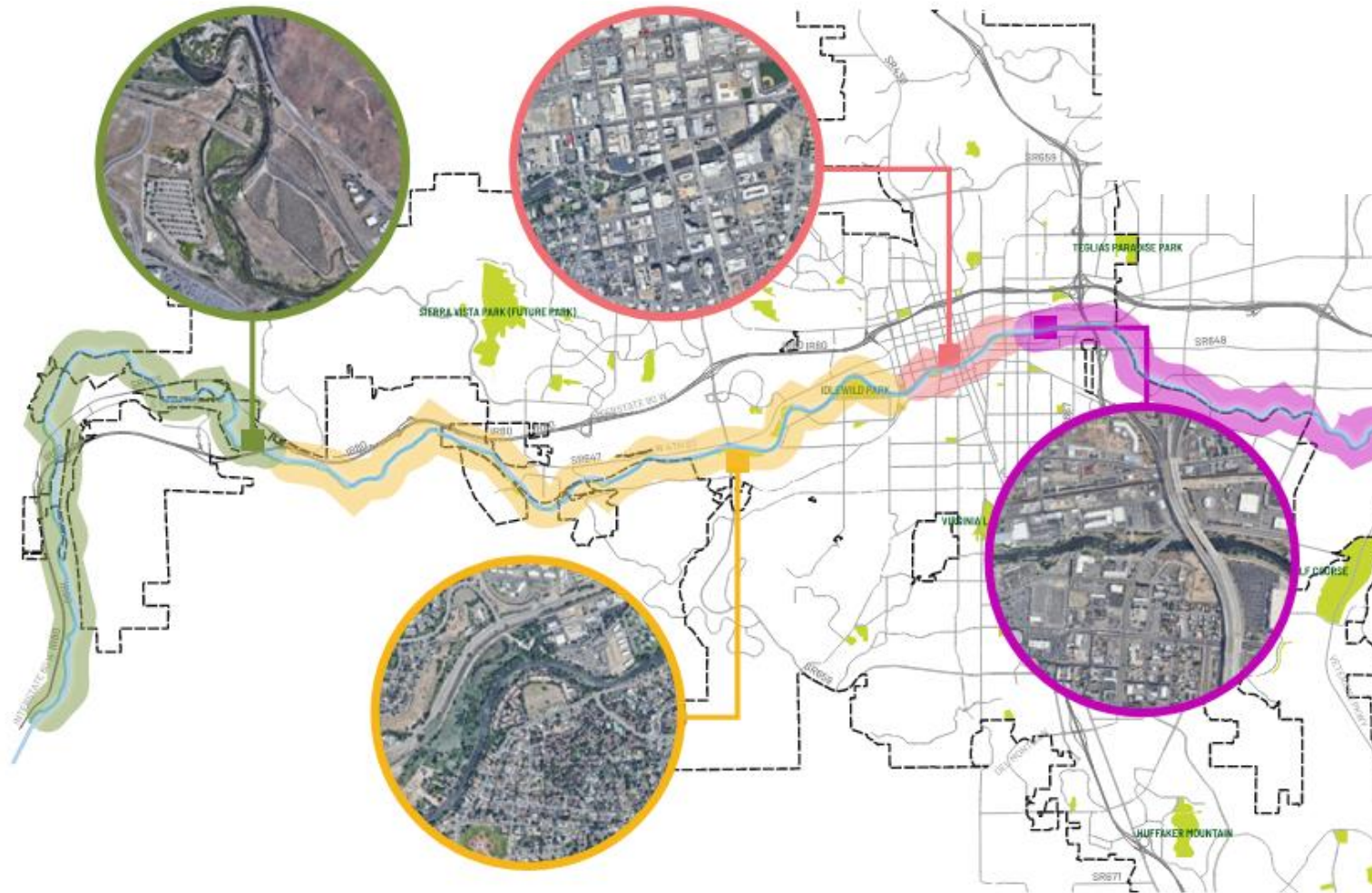


Our approach to the Truckee

How is this Plan Organized?

Character Areas:

W ← → E

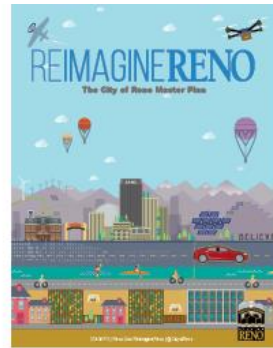
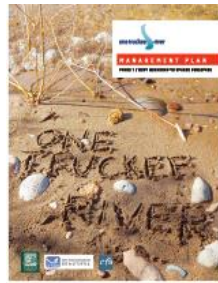


How is this Plan Organized?

Planning Pillars:

- **Safety, Water & Ecological Systems**
- **Land Use and Design**
- **Parks and Open Space**
- **Mobility and Connectivity**
- **Public Art**

We Researched Previous Efforts:

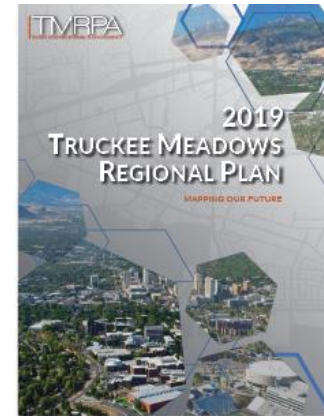


Truckee River Flood
Management Authority

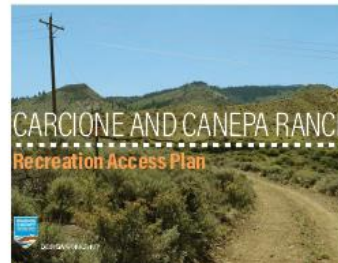
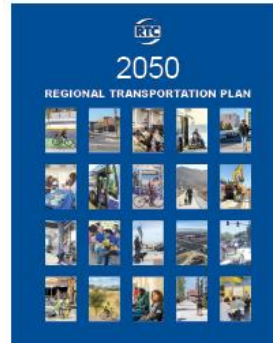
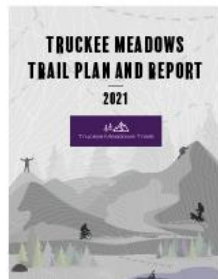
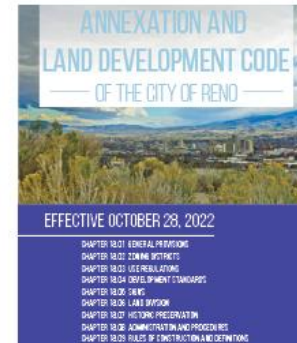
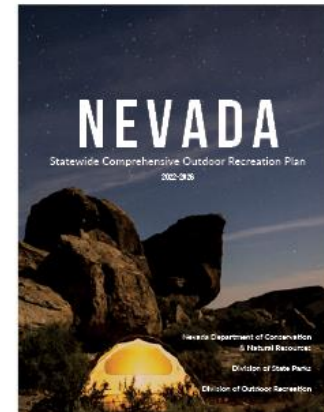
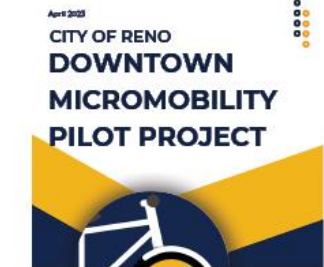
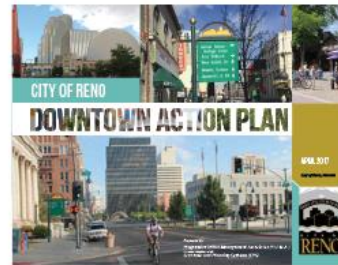
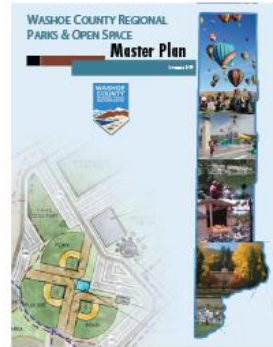
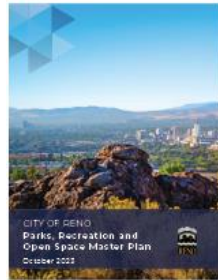


Flood Protection Plan

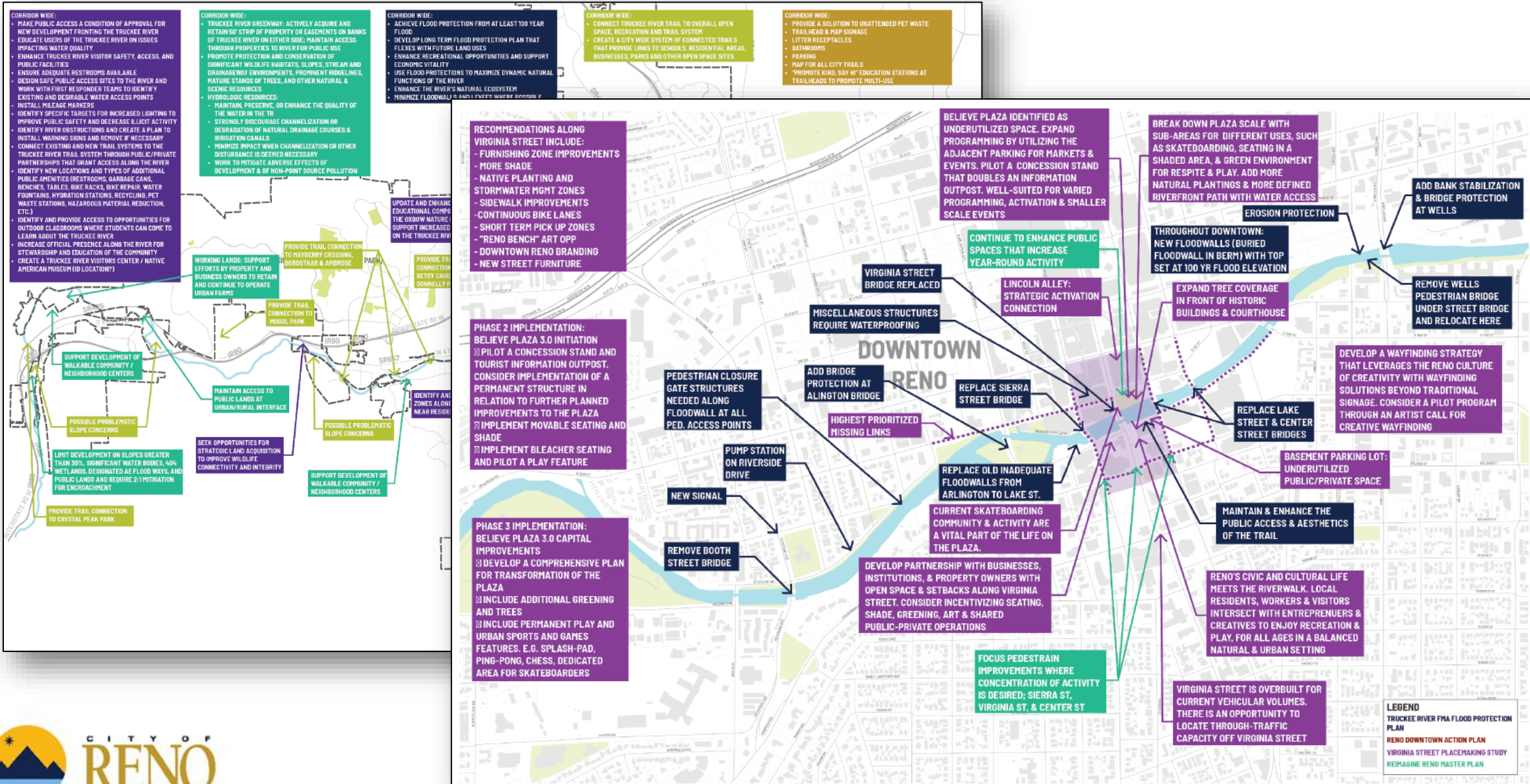
Version 6.0 (Draft) - February 2015



FEHR + PEERS



We Researched Previous Efforts:



We Asked the Community:

What amenities are essential for a thriving Riverfront Community?

89%

Place **PARKS & OPEN SPACE** as
'Extremely Important'



What keeps you from using the river currently?

The **TOP 3**
Answers, in
order were:



1. Cleanliness and aesthetics



2. Safety Concerns



3. Lack of Trail Connectivity

Community Engagement Methods & Totals:

Social Pinpoint	7,973
Completed Surveys	769
Social Media Channels	9,175
E-mail Marketing	13,894
Total Points of	31,811



Five Project Goals:

Goal 1: Encourage A Clean And Safe River.

Goal 2: Prioritize The Ecological Function Of The River.

Goal 3: Celebrate The River As A Recreational Asset.

Goal 4: Implement A Cohesive Plan For Consistency in Design and Maintenance.

Goal 5: Build A Connected River

An aerial rendering of a park development. The park features a large green lawn, a blue seating area with many blue chairs, and a winding path. A lake with several small boats is adjacent to the park. The surrounding area includes modern buildings and a parking lot.

Plan Recommendation Summaries





Planning Themes

Enhancing Ecology + Safety

Promoting Great

Neighborhoods

Activating Public Space

Creating Connections

Integrating Public Art



Enhancing Ecology + Safety

**Promoting Great
Neighborhoods**

Activating Public Space

Creating Connections

Integrating Public Art



Enhancing Ecology + Safety
Promoting Great
Neighborhoods
Activating Public Space
Creating Connections
Integrating Public Art



Enhancing Ecology + Safety
Promoting Great
Neighborhoods
Activating Public Space
Creating Connections
Integrating Public Art



Enhancing Ecology + Safety
Promoting Great
Neighborhoods
Activating Public Space
Creating Connections
Integrating Public Art





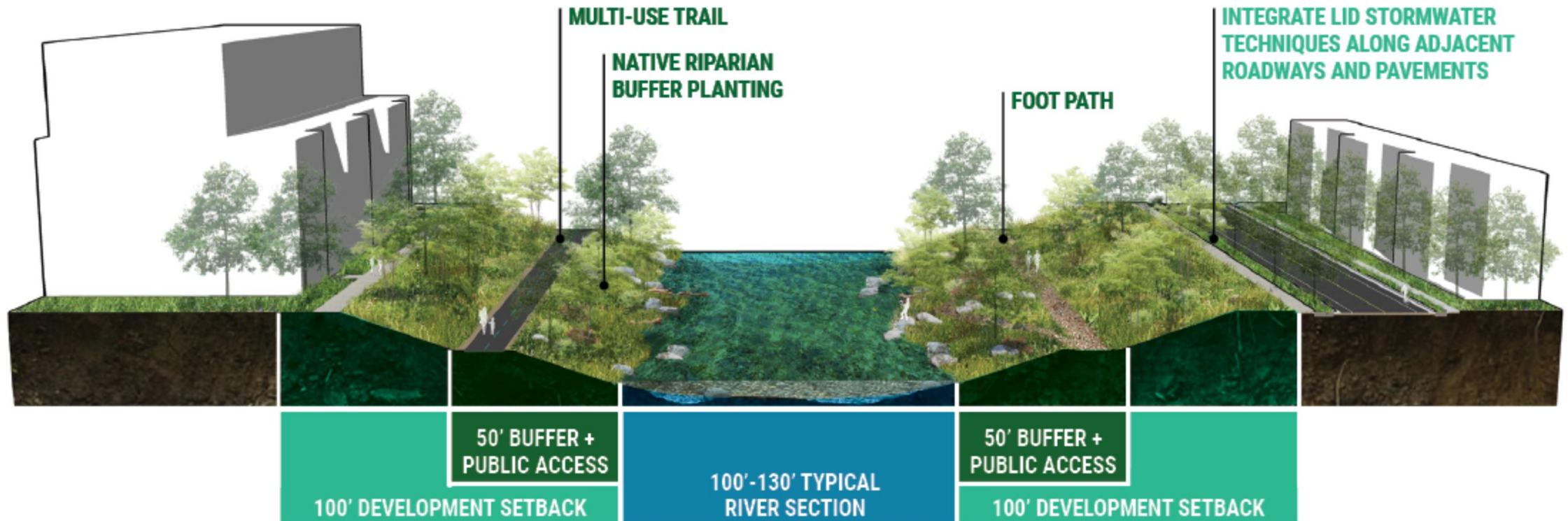
Enhancing Ecology and Safety

Safety, Water & Ecological Systems:

**PROMOTE
DESIRED
RIVERSIDE USE**

**IMPROVE IN-RIVER
SAFETY**

**COLLABORATIVELY
STEWARD THE
TRUCKEE RIVER**



Safety, Water & Ecological Systems:



Provide Consistent, Ecologically Sensitive Lighting



Safety, Water & Ecological Systems:



Vegetation Management



Safety, Water & Ecological Systems:



Standardize and Implement a Truckee River Site Furniture Package



Safety, Water & Ecological Systems:



Assess Low Head Dams + In River Obstacles





Promoting Great Neighborhoods

Land Use & Design Recommendations:

Creation of Truckee River Overlay Zone District

- City of Reno Limits.
- Does not include Single Family Parcels.
- 200' of the Truckee River's edge to guide future development, redevelopment and adaptive reuse.

Land Use & Design Recommendations:

Incentivize Responsible Redevelopment

- Incentivize redevelopment of catalytic properties to create energy along the river corridor

79%

Ranked The City of Reno having the tools to regulate river adjacent development as 'Extremely Important' or 'Important'.

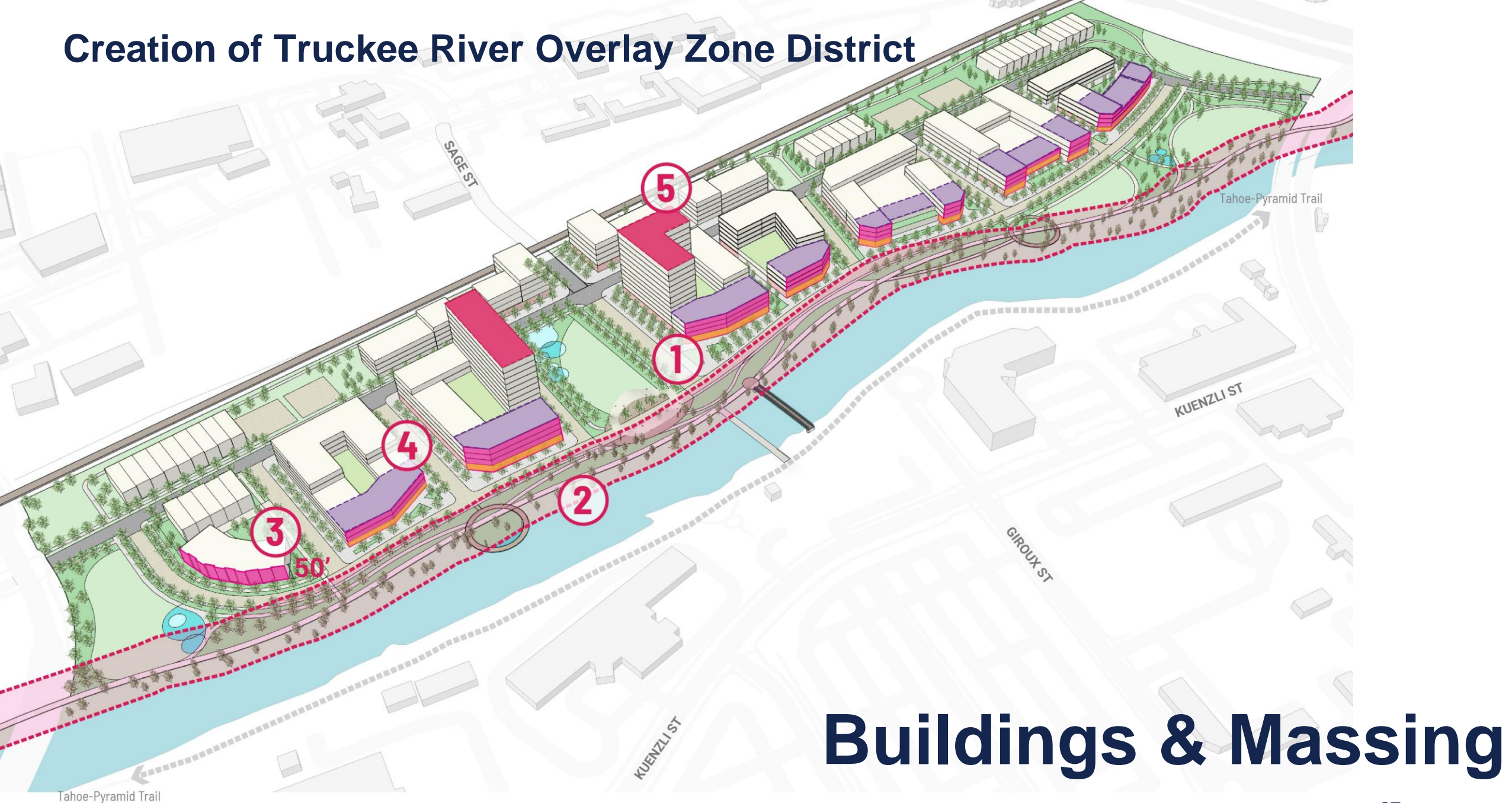
Participants voted that the City of Reno should use economic tools to incentivize the redevelopment of these key parcels.*

*28% had no opinion

50%



Creation of Truckee River Overlay Zone District



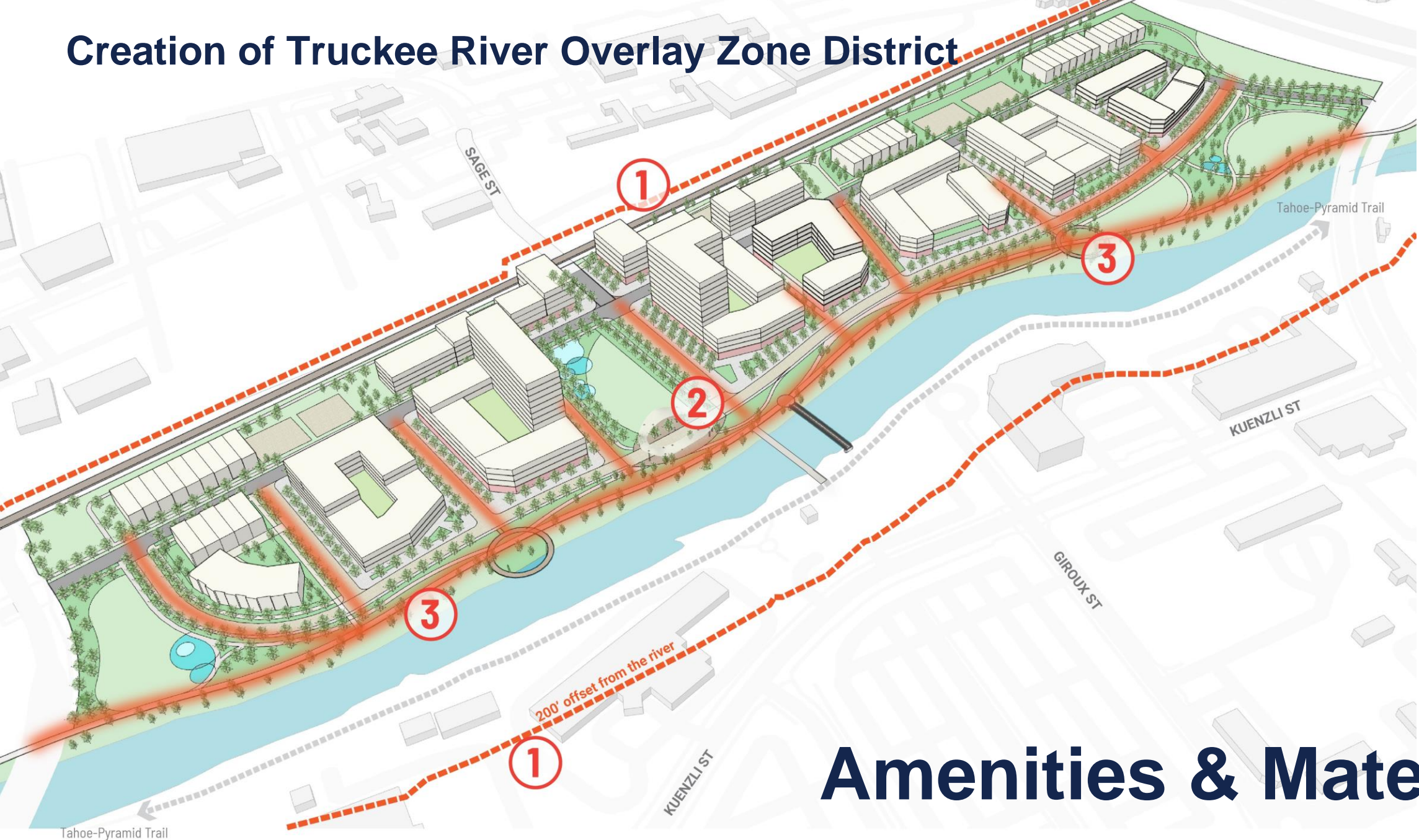
Buildings & Massing

Creation of Truckee River Overlay Zone District



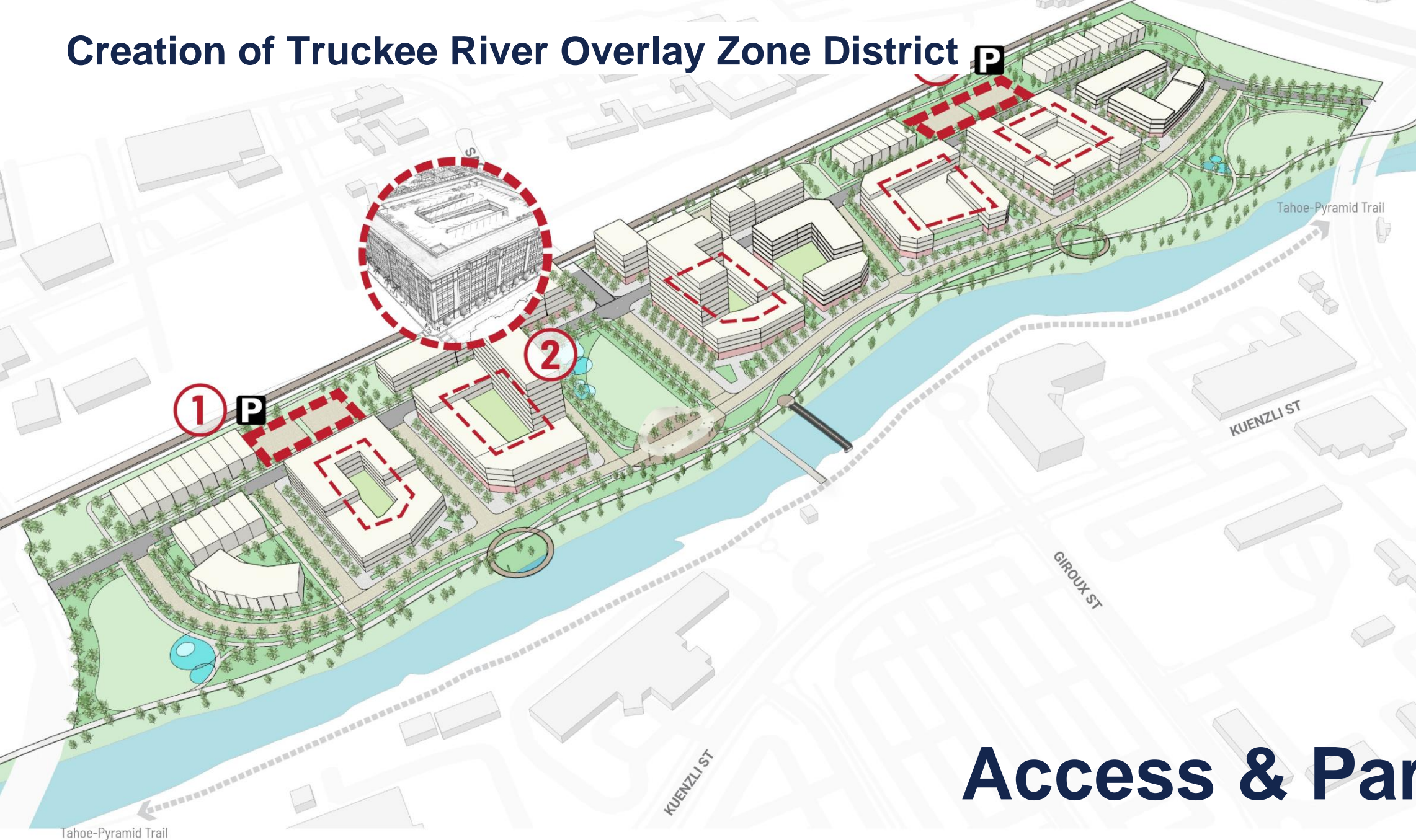
Connections & Open Space

Creation of Truckee River Overlay Zone District



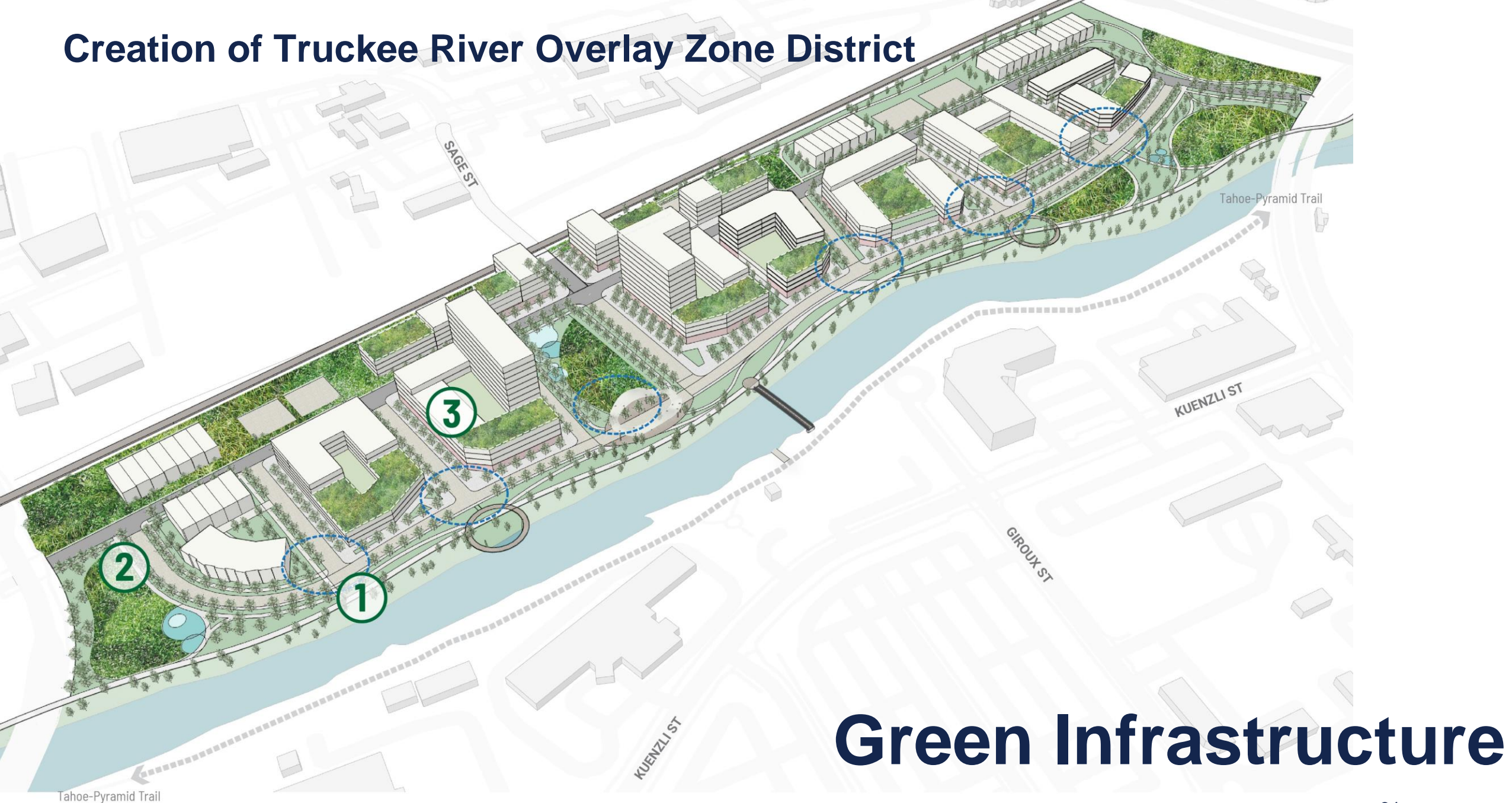
Amenities & Materials

Creation of Truckee River Overlay Zone District **P**



Access & Parking

Creation of Truckee River Overlay Zone District



Green Infrastructure



Revitalizing Public Parks

Parks & Open Space Recommendations:



Establish the Truckee River Special Parks District

Establish a Special Parks District for LONG TERM MANAGEMENT AND FUNDING for the Truckee River Corridor.

Parks & Open Space Recommendations:

CASE STUDY



This park district manages parks and natural resources, including areas along the Mississippi River. It is known for its extensive trail systems and outdoor recreation opportunities along the riverbanks. The district employs a mix of funding sources, including property taxes and user fees.



PARKS & TRAILS

explore over 27,000 acres
of parks & trails



THINGS TO DO

browse a full list of
things to do



PROGRAMS & EVENTS

discover the programs & events
you're looking for



NATURAL RESOURCES

learn how to protect
natural resources

Parks & Open Space Recommendations:

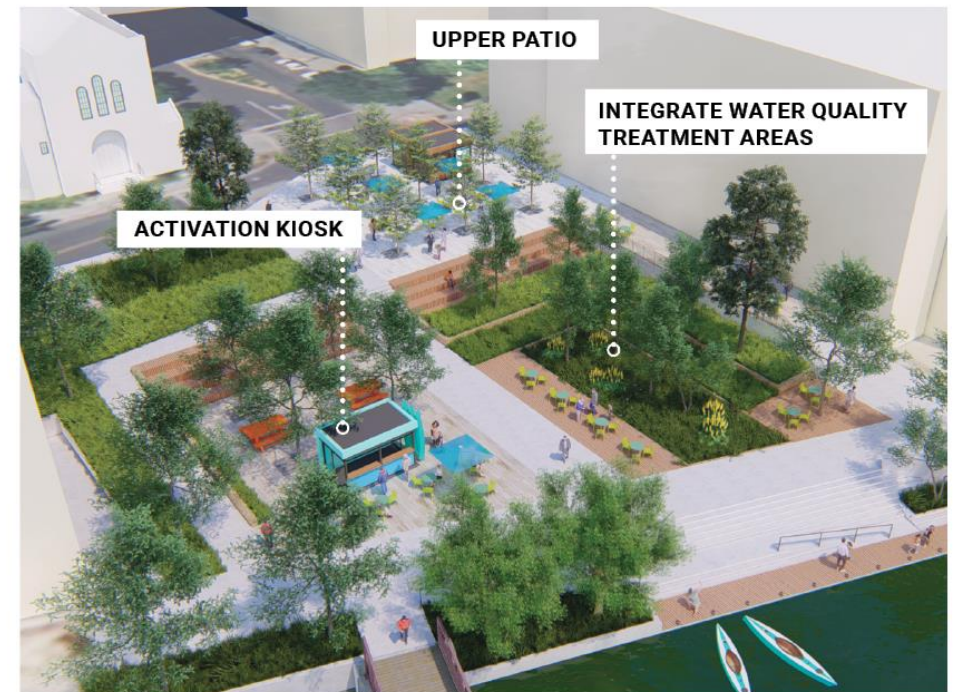


Invest and Transform (Redesign) Key Civic Spaces





P13 Transform: West Street Plaza





RIVERWALK AERIAL



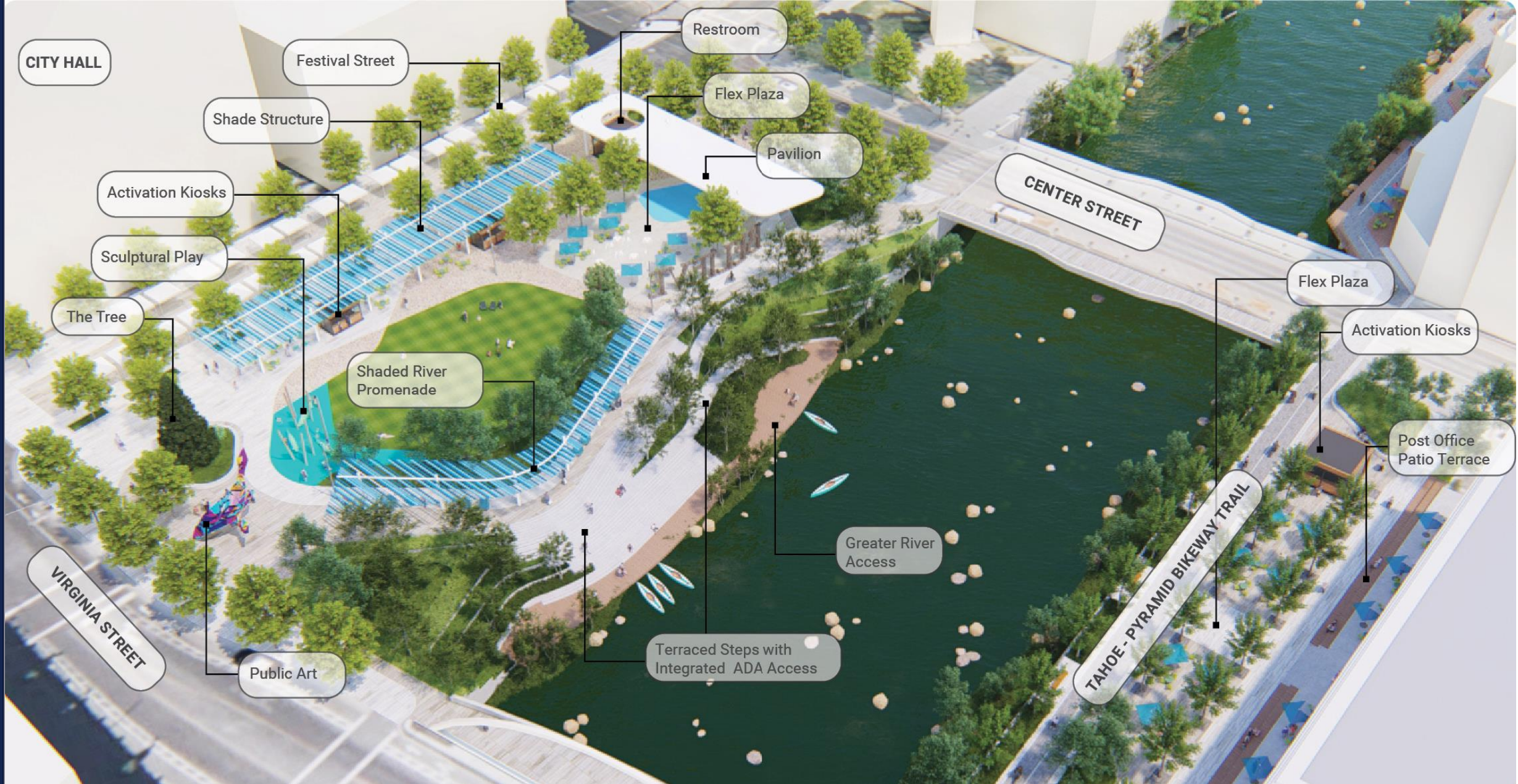
RIVERWALK EYE LEVEL











CITY PLAZA - SCULPTURAL PLAY + PROMENADE CANOPY



CITY PLAZA - CIVIC SEAT STEPS + WATER QUALITY TERRACES



Parks & Open Space Recommendations:



Provide New Community Amenities in East Reno Neighborhood Parks

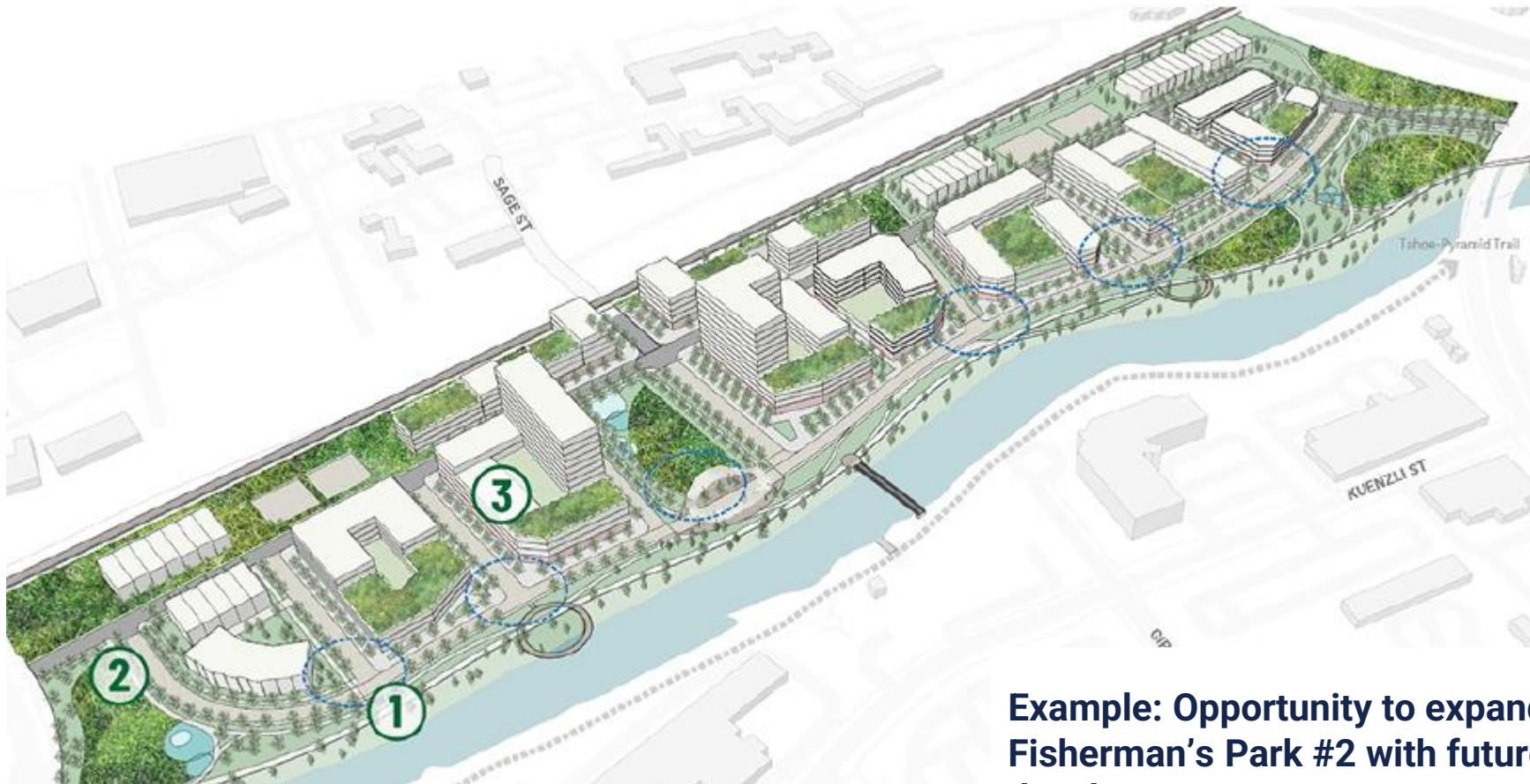
Including new nature center kiosk and community garden at Brodhead Park, a new nature playground at John Champion Park and expanding Fisherman's Park I and II with new amenities.



Parks & Open Space Recommendations:



Expand Park Land



Example: Opportunity to expand Fisherman's Park #2 with future development.

Parks & Open Space Recommendations:

P12 Transform: Brodhead Memorial Park

Brodhead Park will play a pivotal role in creating a midpoint destination from downtown heading east and can relieve some recreational pressure off of Wingfield and Barbara Bennett Park. A Portland L was installed in 2020.

Brodhead Memorial Park Recommendations:

- Integrate adjacent city lot to expand the park, potentially fostering community engagement through initiatives like a community garden partnership.
- Add activation kiosk: nature + visitor's center and potential partnership with West Street plaza Kiosk create a urban river recreational corridor
- Add site furniture that promotes activity
- S** Implement One Truckee River plan for bank stabilization, revegetation and river access points
- Install solar pathway lighting to mitigate vandalism



P6 Enhance: Crissie Caughlin Park

In analysis of Crissie Caughlin Park, as well as public feedback, several recommendations emerge to address existing challenges and enhance visitor experiences.

Crissie Caughlin Park Recommendations:

- Outreach has indicated an issue with off-leash dogs, so the need for a formal fenced dog park area within the park.
- S** Provide educational signage and trash facilities targeted to recreational users to combat debris in park.
- M** Provide wayfinding for commuter cyclists and pedestrians to enhance accessibility and safety within the park.

P7 Enhance: Oxbow Nature Study Area

In evaluating Oxbow Nature Preserve, recommendations to enhance its accessibility and preserve its natural integrity.

Oxbow Nature Study Area Recommendations:

- M** Improve River corridor connectivity with a dedicated bike path and a new pedestrian bridge that connect to Ivan Sack Park.
- Preserve the natural habitat areas by restricting activities such as dog walking and biking, outside of the dedicated bike path.
- Improve entry experience with signage.
- Repair aging infrastructure to support preservation of the area.

Preserve: Ivan Sack Park

Recognizing the neighborhood context of this public space, we recommend preserving this park as is.

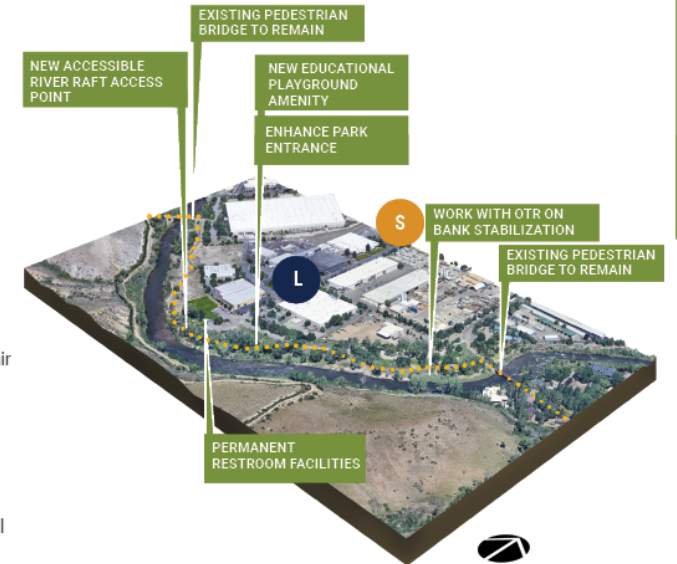
PLAYGROUND REFRESH

P4 Enhance: Mayberry Park

Mayberry Park was repeatedly mentioned during stakeholder and community outreach as one of the most cherished park spaces along the corridor. To elevate its appeal, we propose some thoughtful enhancements.

Mayberry Park Recommendations:

- Addition of permanent restroom facilities, ensuring convenience and comfort for all visitors.
- Inclusion of a playground area, with an educational aspect, will amplify the park's recreational offerings, catering to families and young visitors.
- Enhance river access within the park by providing wheelchair accessible water access point facilitating kayaking opportunities for individuals of all abilities.
- Enhance park entrance by providing improved signage and wayfinding.
- Prioritize pathway and wayfinding improvements to the river access points to safeguard against shoreline erosion. Signage should include directions to put-in locations as well as regulatory signage.
- Install animal resistant trash receptacles.



P5 Enhance: Carcione and Canepa Recreation Area

In coordination with overall park recommendations, Washoe County is in the process of designing and implementing new trailheads at the Carcione and Canepa Recreation Area. These trailheads will contribute to Recommendations P1 and P2.

Carcione and Canepa Recreation Area Additional Recommendations:

- Design and construct single track mountain bike trail with jumps and features were possible along the Tahoe Pyramid Trail Multi-use Path.

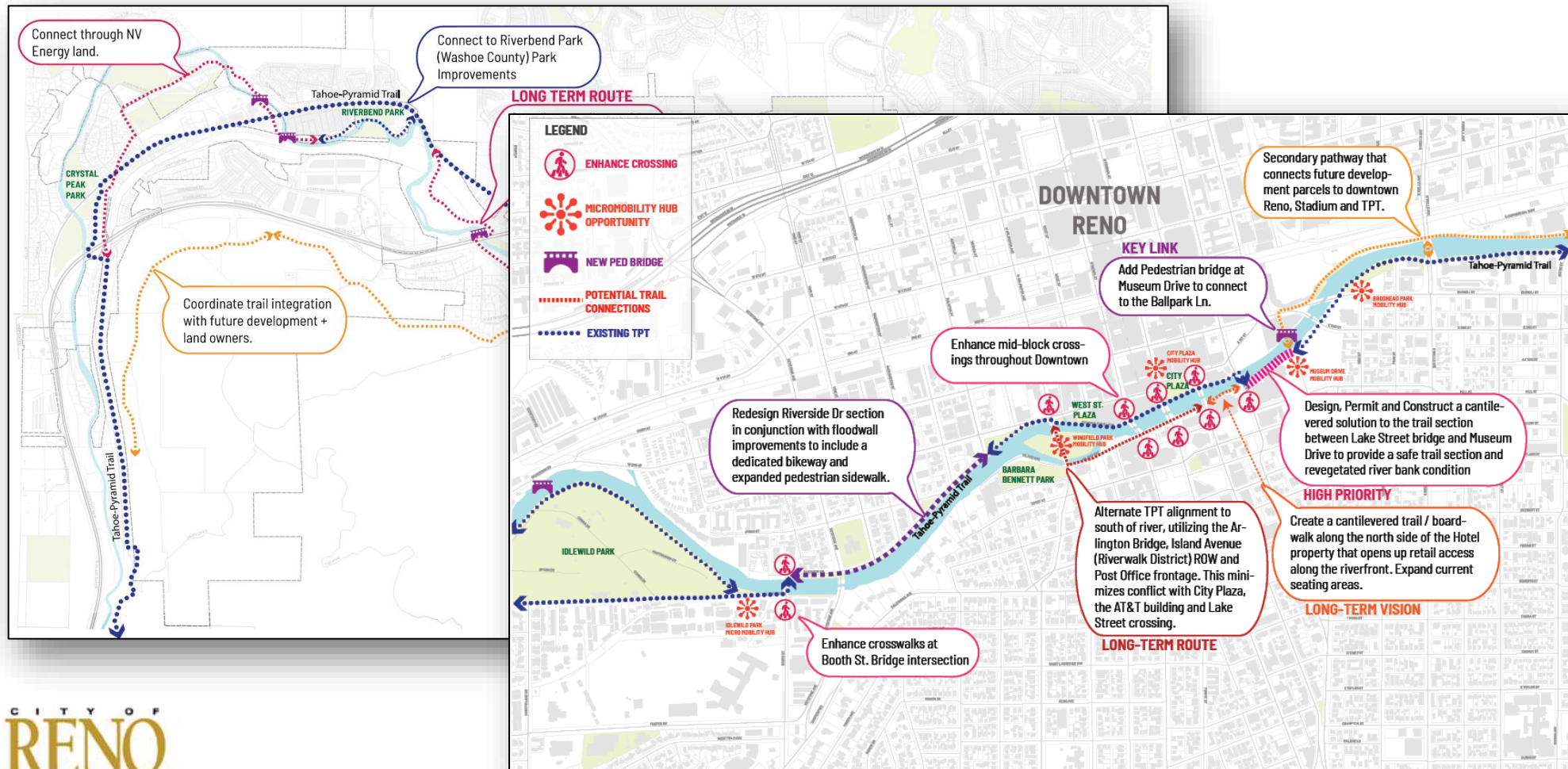


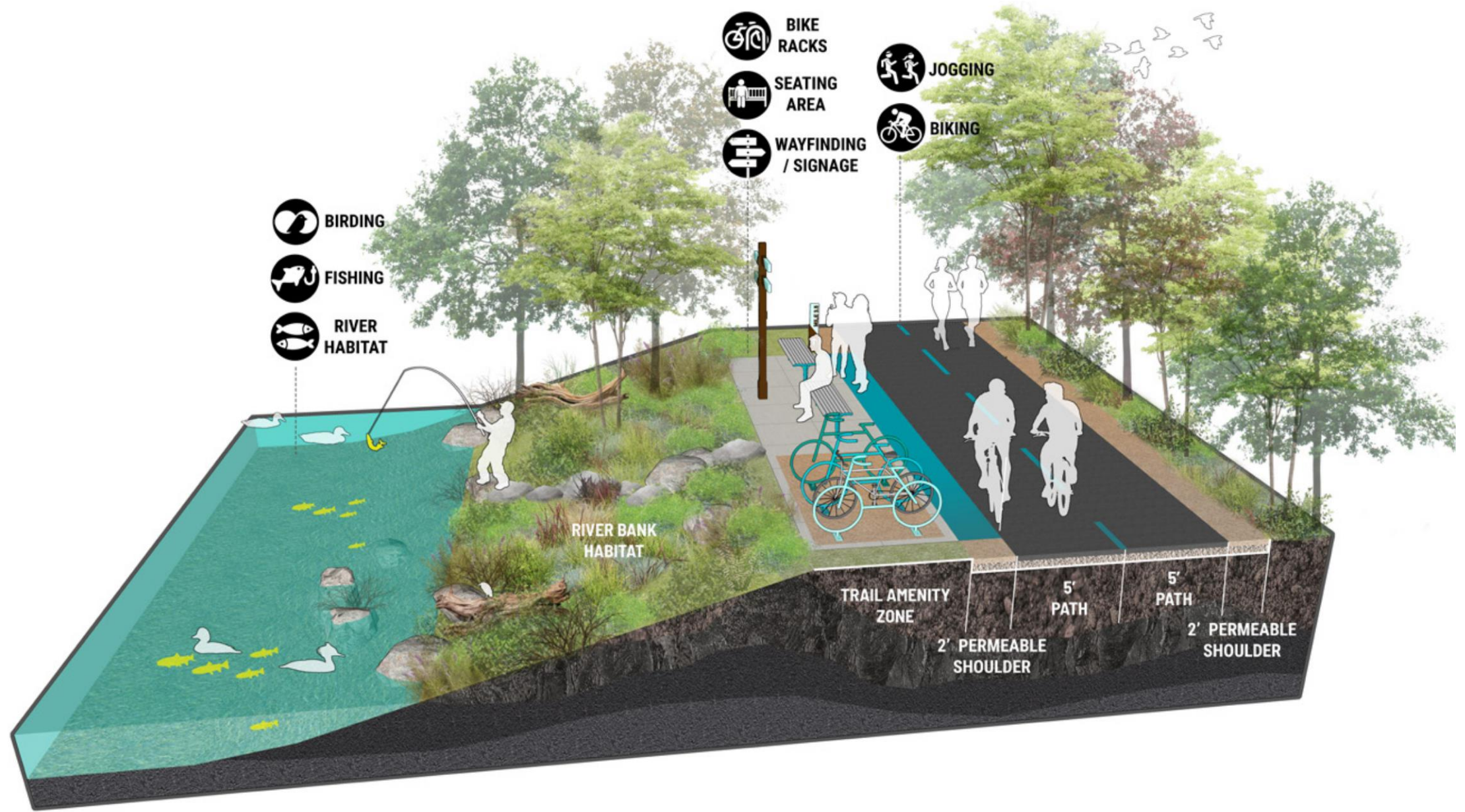
Creating Connections

Mobility & Connectivity Recommendations:

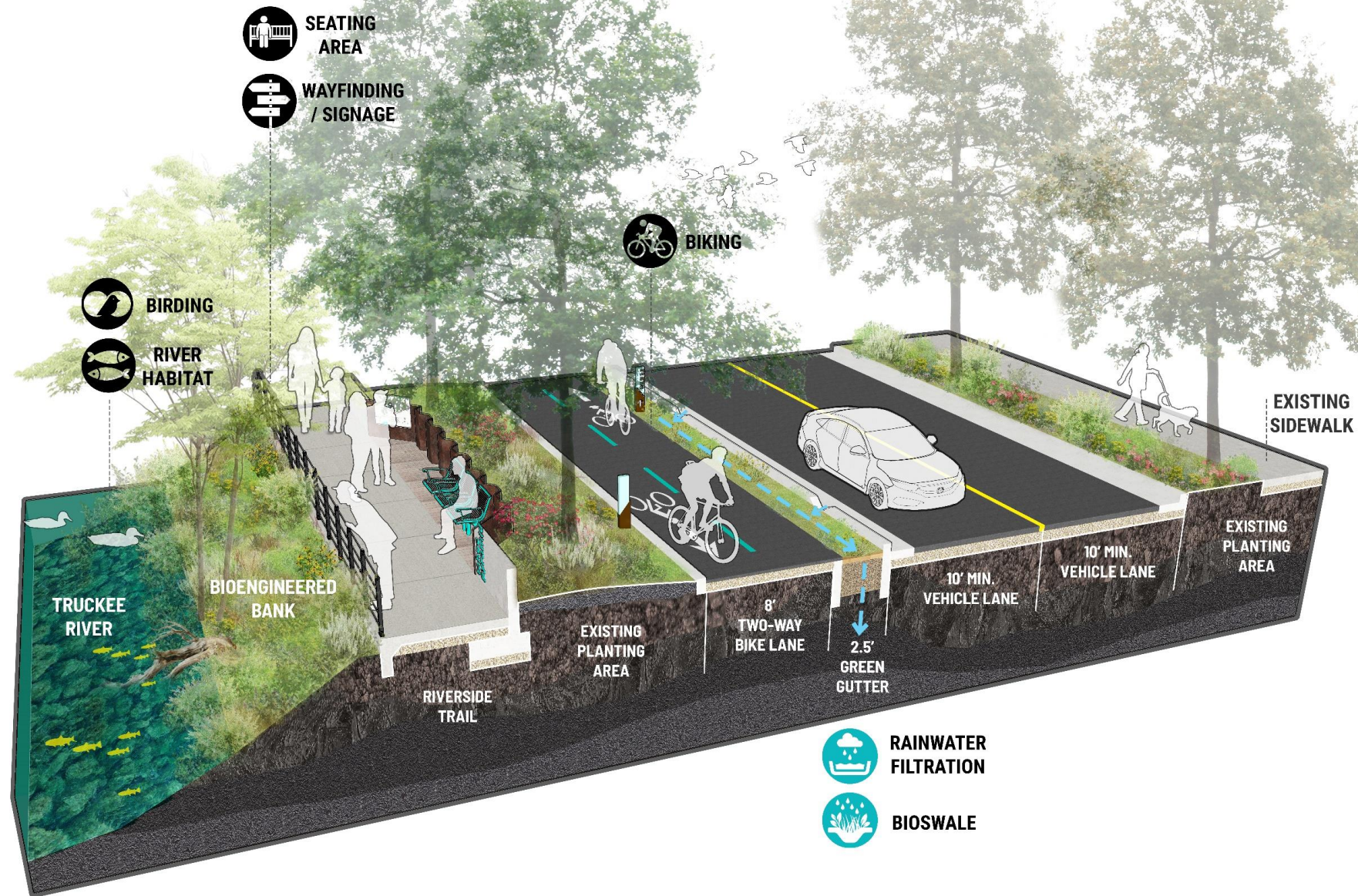


Develop a Distinct and Consistent Path Design











R
RENAISSANCE
HOTEL

R
RENAISSANCE

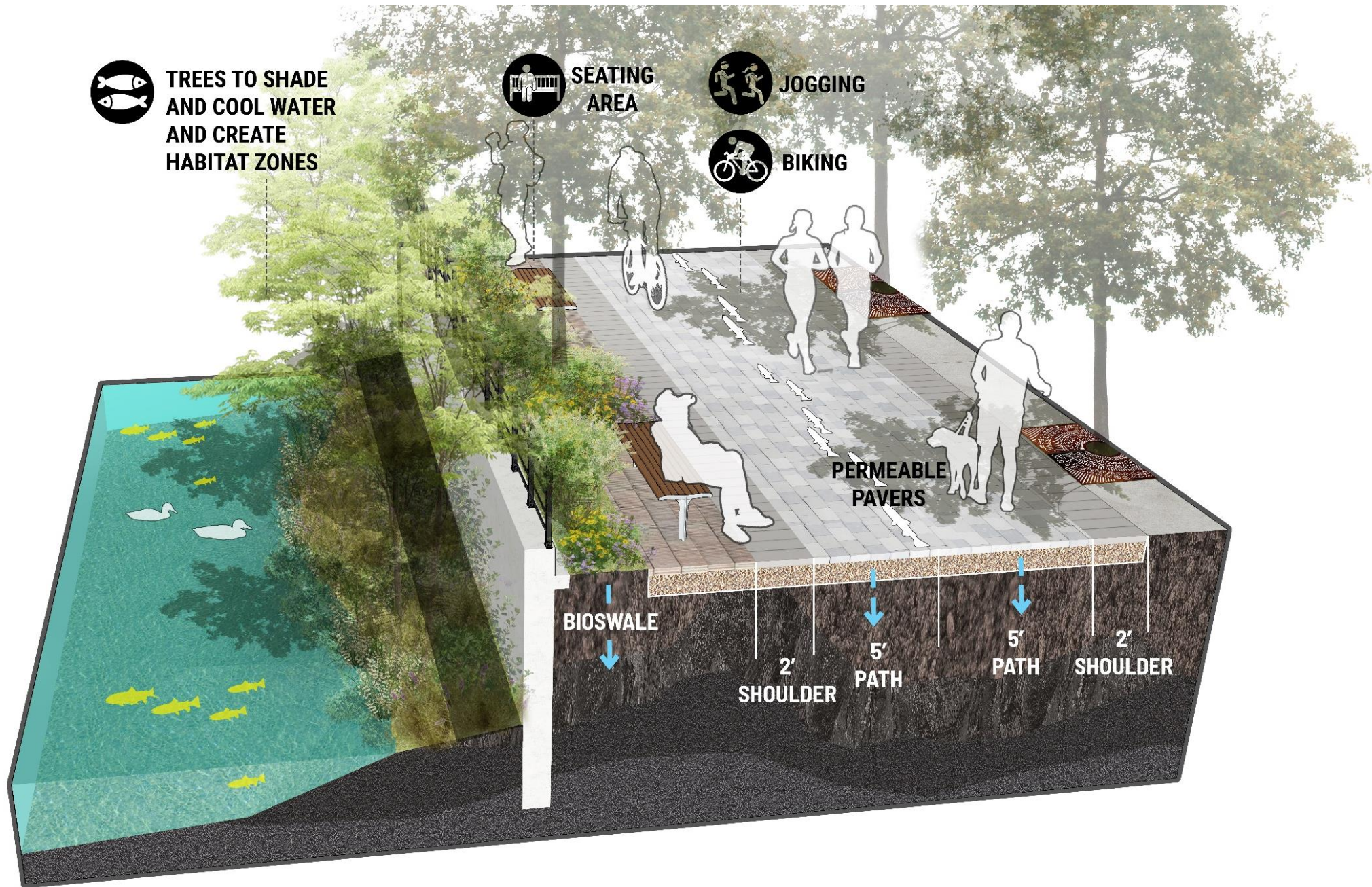
R
RENAISSANCE

RENAISSANCE

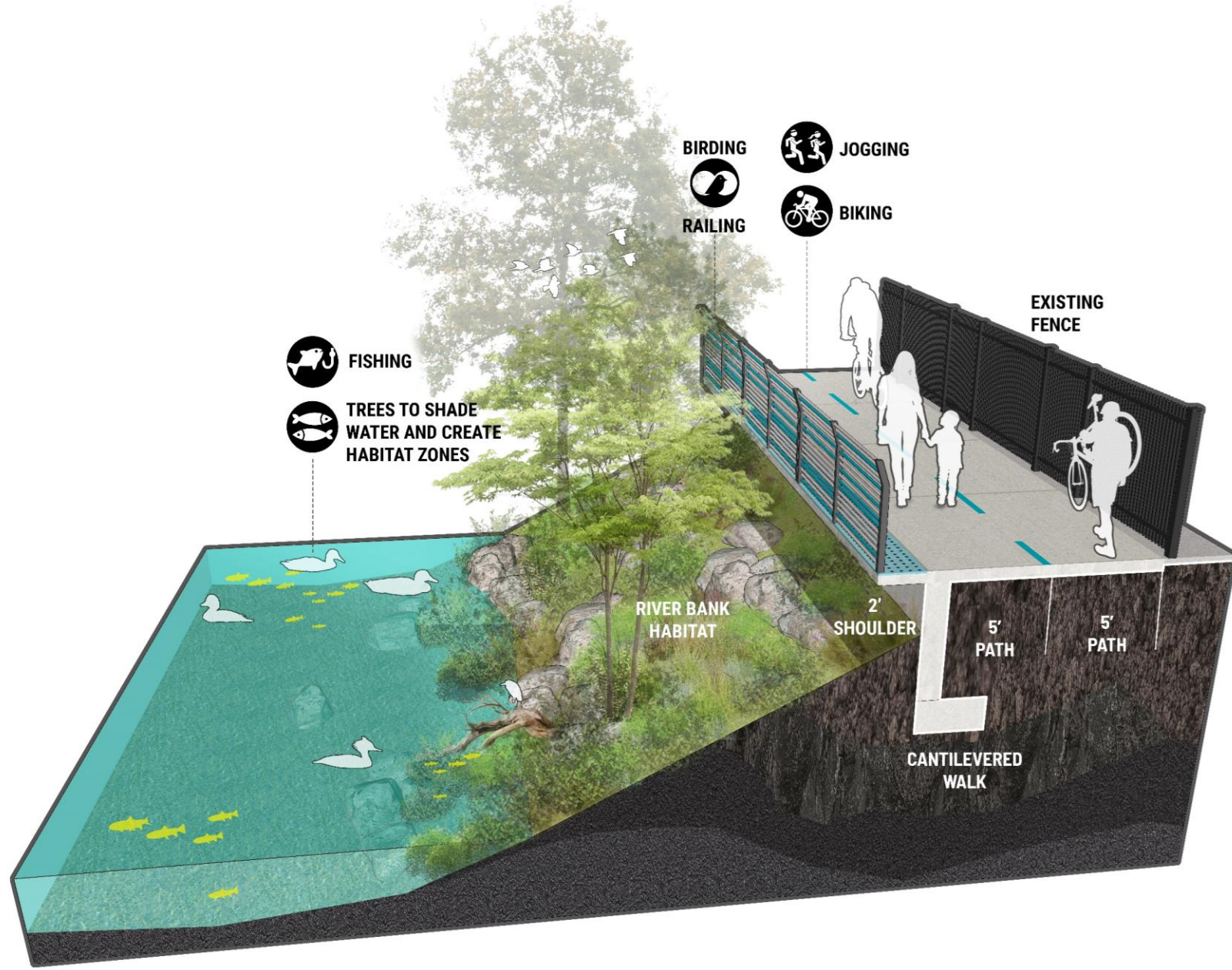
Art by Rina
The Power of Art

OPEN

PLAZA
Dedicated to the
City of Reno
and the
Renaissance Hotel
by
The City of Reno
and the
Renaissance Hotel
by
The City of Reno
and the
Renaissance Hotel







Mobility & Connectivity Recommendations:



Develop a Blueway Plan



GREETINGS FROM



Integrating Public Art

Public Art Recommendations:



Create an Icon or Symbol



Utilize Mural Art for Trail Wayfinding



Incorporate Functional Art



Underpass Art to promote Discovery and Safety



Re-Position 'BELIEVE' to no longer act as a barrier



Public Art Typologies:



ICONIC

Iconic artwork is defined as being large scale (greater than 6'H) and clearly reflective of the characteristics of the project. Iconic artwork is best suited to well trafficked spaces indicating an arrival, or points in the journey inviting reflection and pause.



TEMPORARY

Temporary artwork is defined as artwork exhibited for a limited amount of time. Temporary artwork should be limited to 1-2 locations at any given time, and can range anywhere from 1 day to monthly, quarterly or yearly in life span. Locations can be pre-designated as such, allowing for preparation and fluidity.



MURAL

Mural artwork is defined as artwork directly painted or applied to a wall surface or other substrate. Mural artwork should be used on buildings (non-historical), bridges, and gathering places, including the ground plane.



DISCOVERY

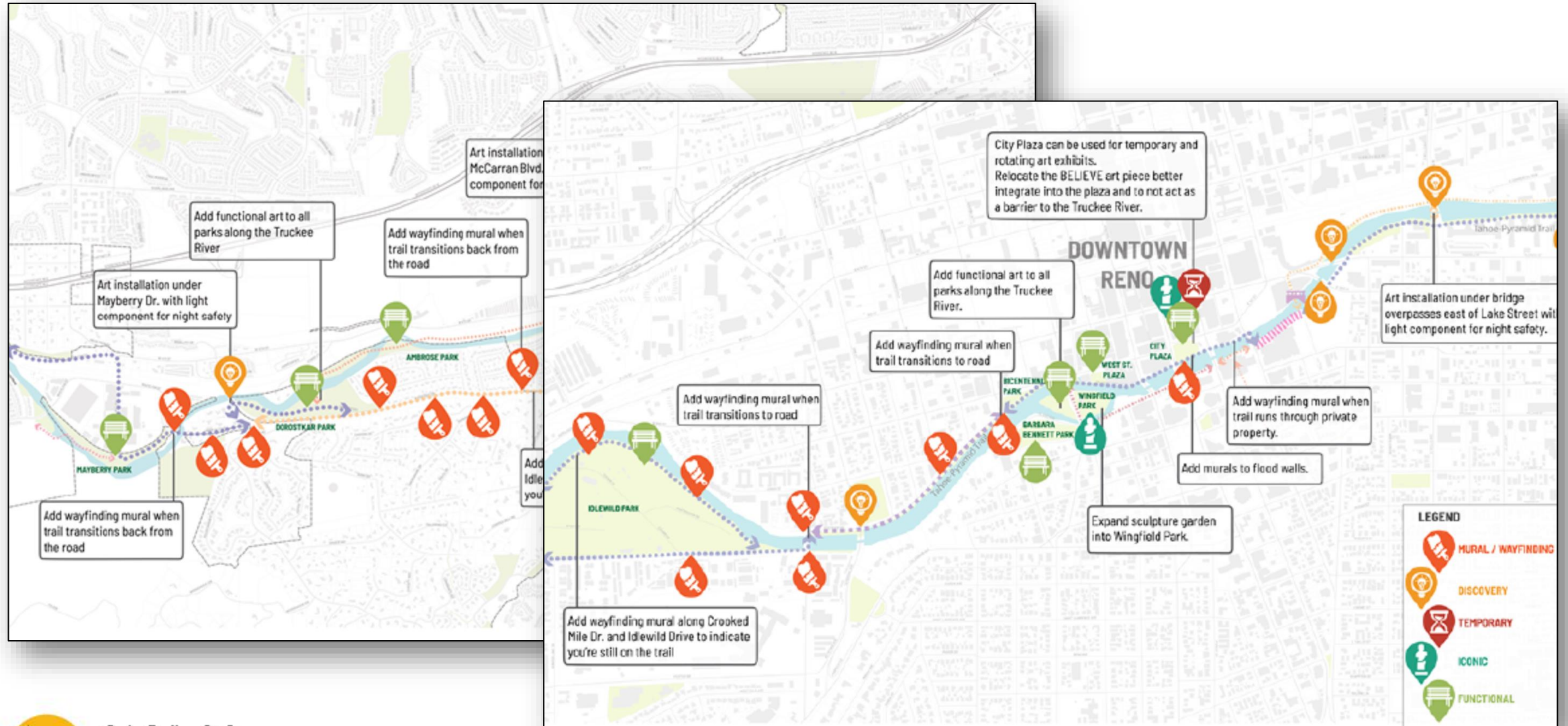
Discovery artwork is defined as artwork that is unexpected and surprises the viewer when they move through the site. Discovery artwork should be incorporated throughout pedestrian friendly paths and sites of gathering. The artwork medium will vary.



FUNCTIONAL

Functional artwork is defined as artwork that also serves a utilitarian purpose. Functional artwork should be used throughout the site where gathering takes place, as well as on sidewalks.

Public Art Recommendations:





Implementing the Vision

Implementation Plan

Will serve as a guide for the City of Reno and Washoe County to prioritize and fund future investments along the Truckee River.

Each recommendation has been assigned the following:

- **Priority Level**
- **Timing**
- **Project Triggers**
- **Budget**
- **Involved Agencies**
- **Funding Sources**
- **Related Planning Efforts**

Implementation Matrix

LAND USE + PLANNING										
Code	Item	Description	Priority	Timing	Project Trigger	Budget*	Agencies	Funding Sources	Related Plan Efforts	
L1	Truckee River Overlay Zone District	Hire a Consultant to work with City of Reno Planning Staff to create a Truckee River overlay Zone District that encompasses City of Reno parcels within 200' of the Truckee River mean waterline. This District will exclude Single Family zoning. This District will guide future development, redevelopment and adaptive reuses. This effort will include specific design guidelines, sections, and planning details that set enforceable standards for Building Form and Mass, Parking, Connectivity, Materiality and Green Infrastructure.	Highest							
L2	Incentivize	Incentivize Redevelopment of 'Catalytic' properties within the Truckee River Overlay Zone to create energy along the river corridor and illustrate the new guidelines and design standards.	High							

PARKS + OPEN SPACE										
Code	Park / Area	Description	Priority	Timing	Project Trigger	Budget*	Agencies	Funding Sources	Related Plan Efforts	
P1	Truckee River Special Parks District / Corridor Wide	Establish the Truckee River Special Parks District, a County-wide tax assessment district designed to support long term operating, maintenance and CIP expenditures for all publicly accessible open space along the Truckee River within Washoe County. Cost includes marketing campaign to pass ballot measure.	Highest	1-2 years	None	\$300k	Washoe County / City of Reno / City of Sparks	General Funds, a Partnership with Washoe County, City of Reno and the City of Sparks.		
P2	Site Furniture Package / Corridor Wide	Procure and Install a standard Truckee River Site Furniture Package in publicly owned lands along the TPT. Furniture Package should include Animal Resistant Trash, Dog Bag Dispensers, Picnic Tables (at Parks), Benches, Bike Racks.	High	2-3 years	Passing of Truckee River Park Districts	\$1 Million	City of Reno Parks / Washoe County Parks	ARPA Funds + Truckee River Parks District Annual Operation Funds + Grants + Donations		
P3	Truckee River 'Riverwalk' Branding and Wayfinding Package / Urban Corridor	Design and install a new Truckee River 'Riverwalk' branding, wayfinding and signage package that complements the existing OTR / Nevada Land Trust package, but creates a new brand for the urban core. This would stretch from Booth Street to Brodhead Park.	High	1-2 years	None	\$500k-750k	City of Reno	ARPA Funds + General Funds + Riverwalk Association		

Implementation Matrix

PARKS + OPEN SPACE									
Code	Park / Area	Description	Priority	Timing	Project Trigger	Budget*	Agencies	Funding Sources	Related Plan Efforts
P1	Truckee River Special Parks District / Corridor Wide	Establish the Truckee River Special Parks District, a County-wide tax assessment district designed to support long term operating, maintenance and CIP expenditures for all publicly accessible open space along the Truckee River within Washoe County. Cost includes marketing campaign to pass ballot measure.	Highest	1-2 years	None	\$300k	Washoe County / City of Reno / City of Sparks	General Funds, a Partnership with Washoe County, City of Reno and the City of Sparks.	
P2	Site Furniture Package / Corridor Wide	Procure and Install a standard Truckee River Site Furniture Package in publicly owned lands along the TPT. Furniture Package should include Animal Resistant Trash, Dog Bag Dispensers, Picnic Tables (at Parks), Benches, Bike Racks.	High	2-3 years	Passing of Truckee River Park Districts	\$1 Million	City of Reno Parks / Washoe County Parks	ARPA Funds + Truckee River Parks District Annual Operation Funds + Grants + Donations	
		Design and install a new Truckee							

Next Steps

- **Plan Adoption**
- **Complete ARPA Funded Projects**
- **Create a Service Plan for the Parks District**
- **Implement Overlay Zoning District**
- **Develop Funding Plan to Complete High Priority Projects and Quick Wins**



Truckee River Vision Plan Thank You

