

Exhibit E. Elevations

Our Lady of the Snows Parish Center

8	EX	9	10	A
	ELE		OCTOBER	

DESIGN DEVELOPMENT



SITE ELEVATION



EXTERIOR ELEVATION - WEST



EXTERIOR ELEVATION - NORTH

PRELIMINARY
NOT FOR CONSTRUCTION

architect + co
commercial
interiors

35 Main St.
Reno, NV 89509
775-329-8001
FAX 775-329-8080

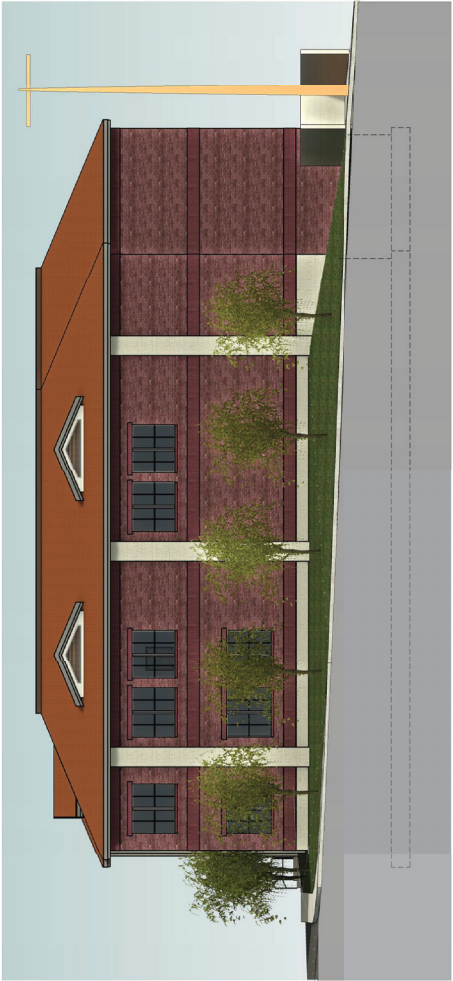
project

Our Lady of the Snows Parish Center

EXTERIOR ELEVATION - EAST



EXTERIOR ELEVATION - SOUTH



A3.2

SHEET

JOB NO.

DATE

CHECKED BY

DRAWN BY

EXTERIOR ELEVATIONS

SHEET FILE

1138 Wright Street
Reno, Nevada 89509

Our Lady of the Snows Parish Center

PROJECT



architect + CL
35 Main St.
Reno, NV 89509
775-329-0001
FAX 775-329-0000

