


**CITY ENTITLEMENT
LANDSCAPE
PLANTING PLAN**

IN-N-OUT BURGER
380 E. PLUMB LANE
RENO, NV 89502

CIVIL ENGINEER
MSI ENGINEERING, INC.
CIVIL ENGINEERS AND LAND SURVEYORS SPECIALIZING IN SITE DEVELOPMENT
301 NORTH SAN DIMAS AVENUE, SAN DIMAS, CA. 91778
(909) 905-2395 FAX (909) 905-2397

REVISIONS

	Δ
	Δ
	Δ
	Δ
	Δ
	Δ

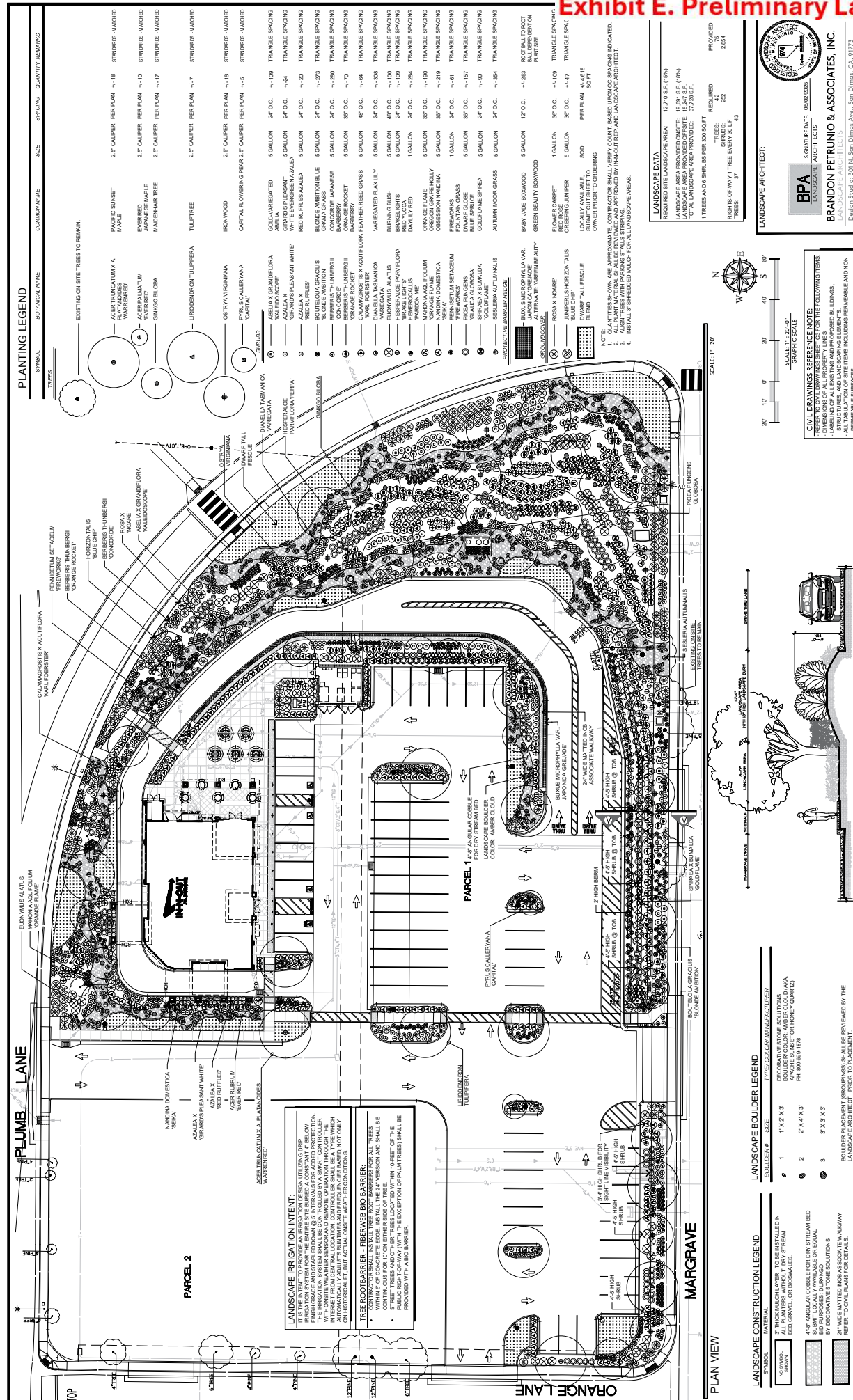

Apogee
 Architecture | Planning
APOGEE PROJECT NO.

SECTION A-A



Now what's below.

OPER:
IN-OUT BURGER
502 HAMBURGER LANE
ALDWIN PARK, CA 91706
CONTACT: PETER KULMATICI
PHONE: 626.813-5378



TREES



ACER TRUNCATUM X A. PLATYNODES
'WARRENRED'
EVER RED JAPANESE MAPLE



ACER PALMATUM
'EVER RED'
EVER RED JAPANESE MAPLE



LIQUIDAMBAR STYRACIFLUA
TULIP TREE



GINKGO BILOBA
MAIDENHAIR TREE



OSTRYA VIRGINIANA
IRONWOOD



PYRUS CALLERYANA
'CAPITAL'
CAPITAL FLOWERING PEAR



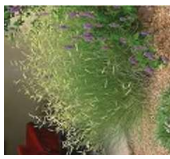
ABELIA X GRANDIFLORA
'KARL FORSTER'
COLD VARIEGATED ABELIA



AZALEA X
GRANDIS 'PLEASANT WHITE'
WHITE EVERGREEN AZALEA



AZALEA X
'RED RUFFLES'
RED RUFFLES AZALEA



ROULETOUA GRACILIS
'BLONDE AMBITION'
BLUE GRAMA GRASS



HEBE X CALLIS
'PARDON ME'
DAY LILY RED



BERBERIS THUNBERGII
'CONCORDE'
CONCORDE JAPANESE BARBERRY



BERBERIS THUNBERGII
'ORANGE ROCKET'
ORANGE ROCKET BARBERRY



DIANELLA TASMANICA
VARIEGATA
VARIEGATED FLAX LILY



CALAMAGROSTIS X AUTIFLORA
'KARL FORSTER'
FEATHER REED GRASS



HESPERALOE PARVIFLORA
'BRAKE LIGHTS'
BRAKE LIGHTS RED YUCCA



ELONKYMUS JAPONICUS
'GRANDIFOLIUS'
JAPANESE ELONKYMUS



NANDINA DOMESTICA
'SEKA'
OBSESSION NANDINA



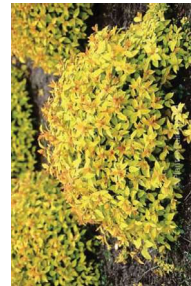
PENNISETUM SETACEUM
'FIREWORKS'
FIREWORKS FOUNTAIN GRASS



MAHONIA AQUIFOLIUM
'ORANGE FLAME'
ORANGE FLAME HOLLY



PICEA PUNGENS
'GLAUCA GLOBOSA'
BLUE SPRUCE



SPIRAEA X BUMALDA
'GOLDFLAME'
GOLDFLAME SPIREA



SESLERIA AUTUMNALIS
AUTUMN MOOR GRASS



BUXUS MICROPHYLLA VAR. JAPONICA
'GREJADE'
BABY JADE BOXWOOD



ROSA X
'NOARE'
NOARE ROSE CARPET



JUNIPERUS HORIZONTALIS
'BLUE CHIP'
CREEPING JUNIPER



AMBER CLOUD BOULDERS
VARIOUS SIZES.



DURANGO - 4 TO 8 INCH

LANDSCAPE ARCHITECT:

BPA LANDSCAPE ARCHITECTS
BRANDON PETRUNIO & ASSOCIATES, INC.
Design Studios 308 N. San Dimas Ave., San Dimas, CA 91773
Office 1000 E. Main Street, Suite 100, San Dimas, CA 91773
T: (924) 725-8940, M: (924) 332-9946, E: brandon@bpa.com

LANDSCAPE ARCHITECT:

BPA LANDSCAPE ARCHITECTS
BRANDON PETRUNIO & ASSOCIATES, INC.
Design Studios 308 N. San Dimas Ave., San Dimas, CA 91773
Office 1000 E. Main Street, Suite 100, San Dimas, CA 91773
T: (924) 725-8940, M: (924) 332-9946, E: brandon@bpa.com

LANDSCAPE ARCHITECT:

BPA LANDSCAPE ARCHITECTS
BRANDON PETRUNIO & ASSOCIATES, INC.
Design Studios 308 N. San Dimas Ave., San Dimas, CA 91773
Office 1000 E. Main Street, Suite 100, San Dimas, CA 91773
T: (924) 725-8940, M: (924) 332-9946, E: brandon@bpa.com

IN-N-OUT BURGER
880 E. PLUMB LANE
RENO, NV 89502

CITY ENTITLEMENT
LANDSCAPE PLANT
PHOTO BOARD

SHEETS
15 OF 15
LPB.1

MSI ENGINEERING, INC.
CIVIL ENGINEER
1000 E. MAIN STREET, SUITE 100
SAN DIMAS, CA 91773
TEL: (924) 332-9946 FAX: (924) 332-9947

MSI ENGINEERING, INC.
CIVIL ENGINEER
1000 E. MAIN STREET, SUITE 100
SAN DIMAS, CA 91773
TEL: (924) 332-9946 FAX: (924) 332-9947

MSI ENGINEERING, INC.
CIVIL ENGINEER
1000 E. MAIN STREET, SUITE 100
SAN DIMAS, CA 91773
TEL: (924) 332-9946 FAX: (924) 332-9947

811
Know what's below.
Call before you dig.

IN-N-OUT BURGER
880 E. PLUMB LANE
BALDWIN PARK, CA 91706
CONTACT: PETER KUMATICKI
PHONE: 626 813-5578

MSI ENGINEERING, INC.
CIVIL ENGINEER
1000 E. MAIN STREET, SUITE 100
SAN DIMAS, CA 91773
TEL: (924) 332-9946 FAX: (924) 332-9947