

# **ABN24-00003**

## **(Stevenson Street Abandonment)**

*Reno City Council*  
*October 23, 2024*





# Project Information

## Site:

- ±32,000 Square Feet

## Request:

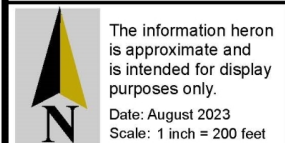
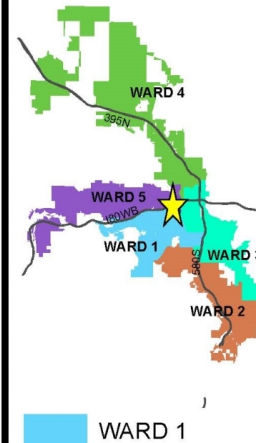
- Abandonment to convert Stevenson Street to a one-way street with 68 parking spaces – 22 dedicated for public use

### VICINITY MAP

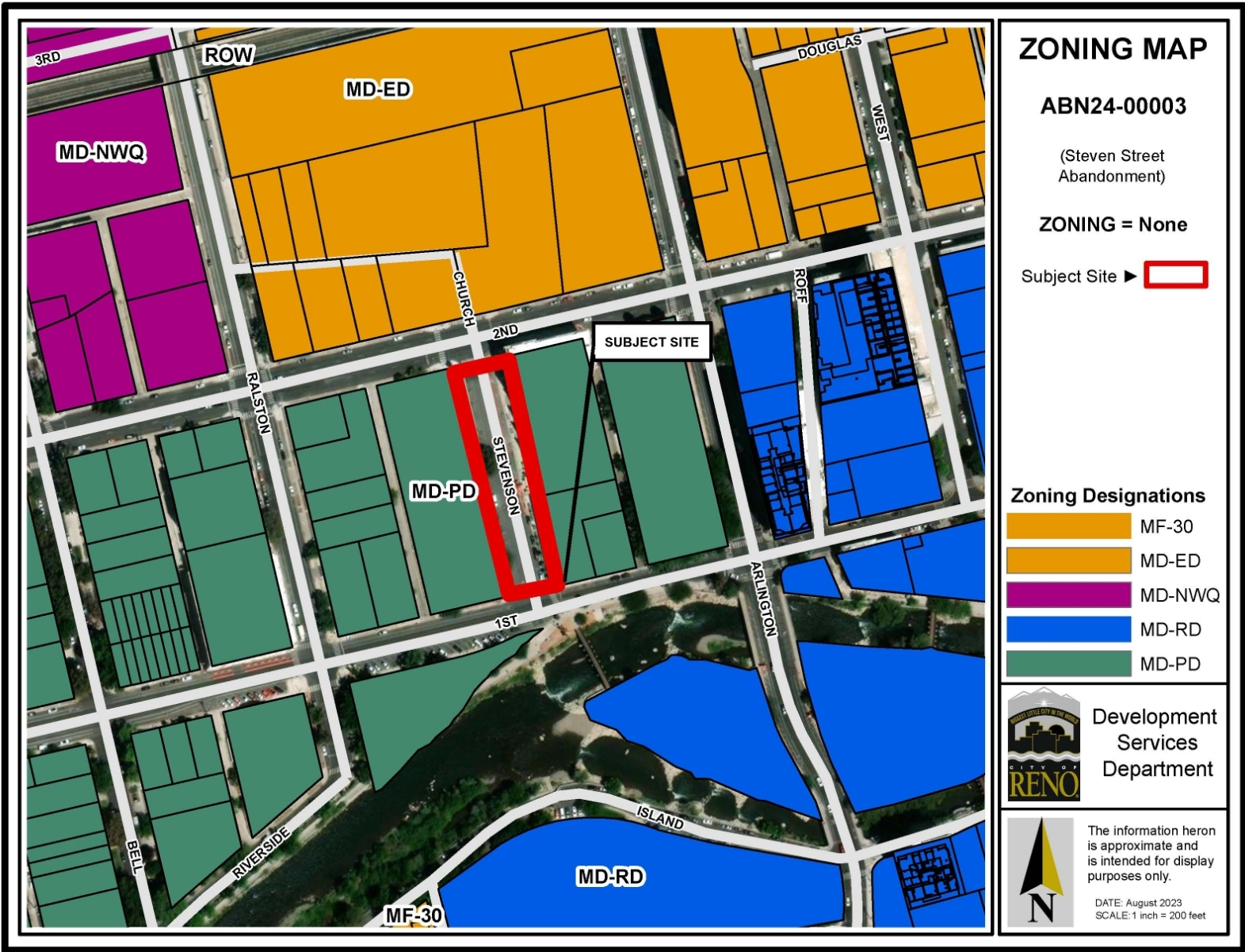
ABN24-00003

(Stevenson Street  
Abandonment)

Subject Site ► 







**Zoning District**

Mixed-Use Downtown Powning District (MD-PD)

**Key Issues**

- Traffic, Access, & Circulation
- Public Parking
- Landscaping & Amenities
- Utilities
- Financial & Legal Implications
- Public Benefit





## **Background**

September 2020 – Proposed Abandonment

Closed 2022 due to inactivity

## **Existing**

Two-way street

20 parallel parking spaces

11 parking meters

5- & 6-foot sidewalks on both sides

5-foot landscaped parkway on the east





## **Existing**

Two-way street

20 parallel parking spaces

11 parking meters

5- & 6-foot sidewalks on  
both sides

5-foot landscaped parkway  
on the east





## Existing

Two-way street

20 parallel parking spaces

11 parking meters

5- & 6-foot sidewalks on both sides

5-foot landscaped parkway on the east



## Existing Parking

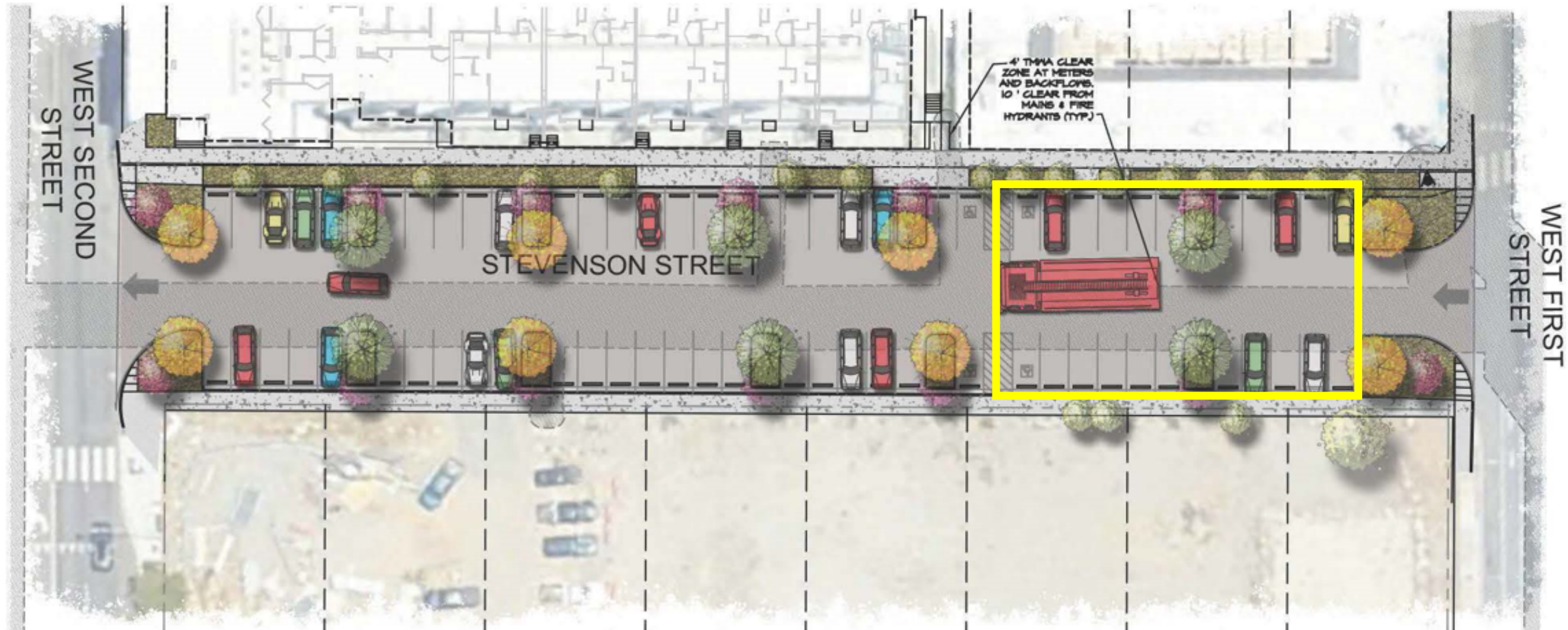


Not parking spaces





# Traffic, Access, & Circulation & Public Parking





# Landscaping & Amenities

RMC Standard	Required	Proposed
15% total surface area shall be landscaped	4,800 square feet	4,890 square feet
1 landscape island per 12 parking spaces	4 islands	10 islands
No parking space further than 75 feet from a shade tree	75 feet	35 feet
Amenities	Not required	2 benches & 2 trash cans
One Street Tree planted every 30 linear feet	16 Trees	27 Trees



# Recommended Abandonment Finding

Abandonment Finding	Staff Review and Analysis	Recommendation
The public will <b>not be materially injured</b> by the proposed abandonment.	<ul style="list-style-type: none"><li>• Vehicular access is maintained</li><li>• Pedestrian access is maintained</li><li>• Parking is increased</li><li>• Landscaping/trees are added</li><li>• Safety is increased</li></ul>	✓ Yes



## **Recommended Motion**

**I move to approve the proposed abandonment subject to the conditions listed in the staff report.**