

# **EXHIBIT 1**

## **COMMENDABLE ARCHITECTURAL EXAMPLES**



- A. The above image shows staggered building heights, with roof overhangs that are cohesive in design, eaves extending past the facade, and balconies that display a variety of sizes and styles. The differing horizontal colors and materials help anchor the building to the ground and make it visually interesting without appearing chaotic.



- B. The building above showcases a large horizontal setback, a lighter color palette, and open corner balconies and windows, creating an airy feel and a less imposing presence.

# **EXHIBIT 1**

## **COMMENDABLE ARCHITECTURAL EXAMPLES**



- C. The building above has a darker base material that anchors it to the ground, while the light-colored banding highlights its geometry and provides shade with deep recesses. The mid-tone body visually recedes, reducing the otherwise “block-like” appearance.



- D. The above image showcases a more “traditional” architectural façade. The color scheme, featuring a darker base, lighter materials for the upper floors, and white accents, breaks up the mass of the building into what the eye perceives as individual units. The entry points are clearly defined, and the combination of arched and square balcony openings adds interest.



# **EXHIBIT 1**

## **COMMENDABLE ARCHITECTURAL EXAMPLES**



- E. The image above does not seem massive, despite being a seven-story structure, because its ground floor features different materials from those above, providing a solid base. The center portion of the building includes a large setback, and the corner balconies are visually open. The upper floors showcase a mix of materials, with a lighter color framing the ends and middle, while darker wood provides a tower-like element. All these design details visually reduce the building's overall mass.



- F. The image above illustrates the articulation in the roofline and setbacks of the varying building blocks, which create a “row house” appearance and reduce its overall mass.

# **EXHIBIT 1**

## **COMMENDABLE ARCHITECTURAL EXAMPLES**



- G. The image above showcases a playful approach to the massing, with the extended roofline providing both shade and visual interest. Several “tower” elements introduce relief to the roofline through their varying heights. The balcony materials extend at the corner, while the balconies are arranged side by side in the middle of the building. This design keeps your eye moving, and the light background color makes the building appear less massive than its footprint might suggest.

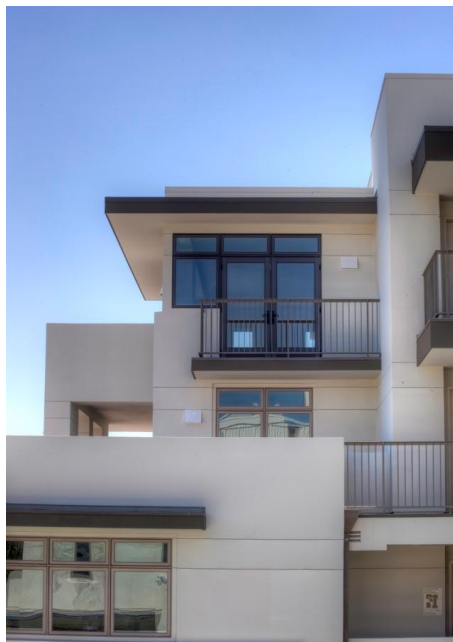


- H. The above image showcases impressive articulation in its façade, largely thanks to its color scheme and exterior recesses that exhibit depth, modulation, and dimensionality. The light-colored sections of the building create contrast and articulation, making the top roofline appear lightweight, which diminishes the building's visual mass.



# **EXHIBIT 1**

## **COMMENDABLE ARCHITECTURAL EXAMPLES**



- I. The images above depict a residential building that appears inviting and intriguing, highlighting the varied articulation of its façade and windows. The color scheme and materials contribute to its appeal through the different overhangs, balconies, street-friendly design, and landscape setbacks. It embodies both horizontal and vertical setbacks with grace and sophistication.

## **EXHIBIT 1**

### **COMMENDABLE ARCHITECTURAL EXAMPLES**



- J. The images above display a four-story residential building with massing elements that reduce the scale of the building at street level while effectively minimizing the overall height. The light-colored materials contrast with one another, and there are various roof lines, façade articulations, and both vertical and horizontal setbacks. The building respects the corner of the site with the tapered design detail of the exterior balconies.