



NSEA

NEVADA STATE EDUCATION ASSOCIATION



ROBERT MUNSON, English Teacher, Wooster HS
ADRIENNE CONLEY, Kindergarten Teacher, Silver Lake ES
JENI MARTINEZ, 3rd Grade Teacher, Donner Springs ES
CHRIS DALY, Political Director, Nevada State Education Association



NSEA

NEVADA STATE EDUCATION ASSOCIATION

- NSEA has been the voice of Nevada educators for 125 years.
- We represent over 11,000 educators across the state.
- Members include licensed educators, like teachers and counselors, as well as education support professionals including paraprofessionals, custodians, bus drivers, and school secretaries.

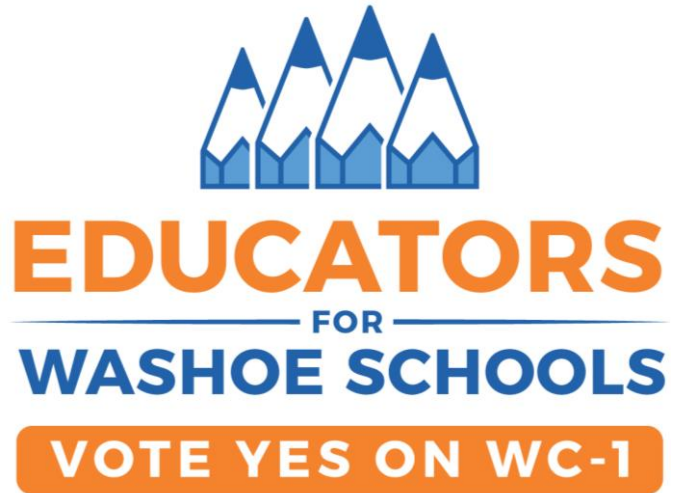


NSEA

NEVADA STATE EDUCATION ASSOCIATION

- **NSEA represents nearly 2000 educators living in Reno, including about 250 living in the 89506 zip code.**
- **NSEA represents hundreds of educators working in impacted WCSD school in the North Valleys.**

GOOD PLANNING



GOOD PLANNING



Facilities Plan 2020-2039

Prepared by:
Facilities Management Department
Washoe County School District | January 2020



**For approval and action:
FMP Recommendations**

Washoe County School District
Facility Modernization Plan
Investments for Equity, Efficiency & Community

Dec 12, 2023

CANNONDESIGN

GOOD PLANNING



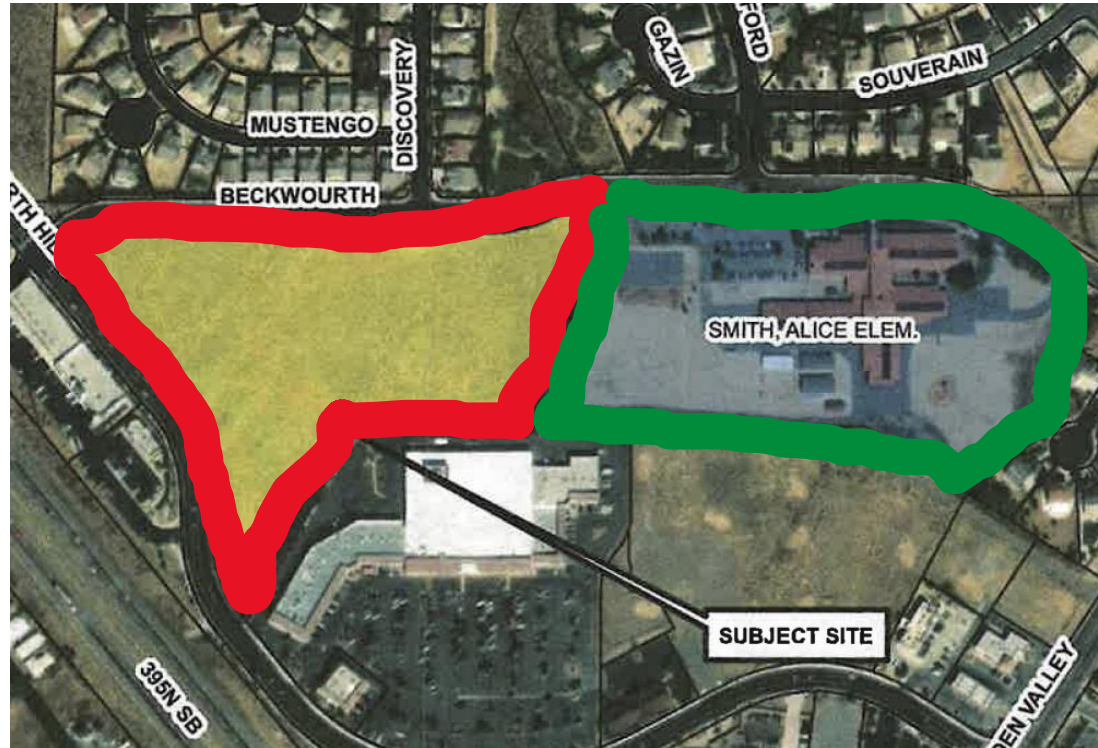
GOOD PLANNING



WCSD SCHOOL CAPACITY

School Name	Grades Served	22-23 Enrollment	% Capacity	% Minority	% IEP	% EL	% FRL
Bennett	K-5	538	75%	70.9	21.6	33.6	100.0
Desert Heights	K-5	463	65%	66.3	27.0	18.6	100.0
Elmcrest	K-5	319	58%	63.0	17.2	14.1	100.0
Lemmon Valley	K-5	714	89%	64.7	14.2	22.4	100.0
Silver Lake	K-5	424	79%	58.3	15.3	21.5	40.6
Alice Smith	K-5	501	72%	70.9	20.0	22.4	100.0
Stead	K-5	702	85%	70.9	14.1	24.9	100.0
Cold Springs MS	6th-8th	648	44%	42.9	17.6	6.0	34.7
Desert Skies MS	6th-8th	978	69%	81.1	15.8	23.9	100.0
O'Brien MS	6th-8th	1065	83%	74.7	14.7	17.7	100.0
North Valleys HS	9th-12th	2432	98%	64.6	14.4	13.7	37.1
Hug High	9th-12th	2331	96%	86.6	16.6	27.0	100.0

POOR PLANNING



POOR PLANNING



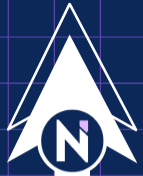
Washoe County School District

425 East Ninth Street * P.O. Box 30425 * Reno, NV 89520-3425
Phone (775) 348-0200 * Fax (775) 348-0304 * www.washoeschools.net

Board of Trustees: Beth Smith, President * Adam Mayberry, Vice President * Joe Rodriguez, Clerk
Jeff Church * Diane Nicolet * Colleen Westlake * Alex Woodley * Kristen McNeill, Ed.D., Interim Superintendent

January 17, 2024

44% of its enrollment capacity. The possible impacts to schools as a result of the opening of MANN Golden Valley include impacted elementary schools seeing a total average enrollment of 62% of capacity, impacted middle schools falling to a total average enrollment of 60%, and as a result of MANN Golden Valley the impacted high schools are anticipated to fall to a total average enrollment of 80%. School closures at the elementary school level would be likely upon the opening of MANN Golden Valley. Alice Smith Elementary,



- **WEA has served Washoe educators since 1965.**
- **WEA represents about 4000 licensed professionals in the Washoe County School District.**
- **We believe the best possible working conditions are children's best possible learning conditions.**

CHARTER SCHOOL IMPACT



TRAFFIC IMPACT



PEDESTRIAN & BICYCLE SAFETY



TEACHER TESTIMONIALS



ACCOUNTABILITY EFFORTS

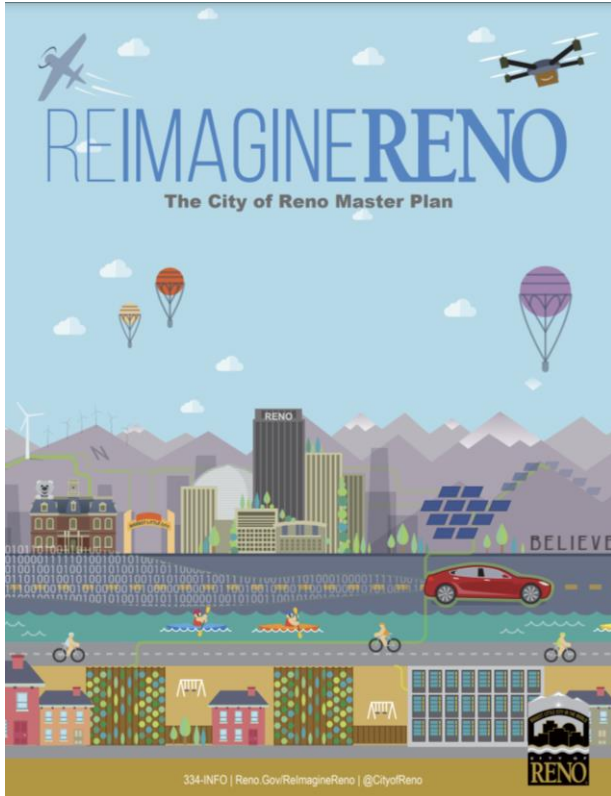


RMC 18.08.304(e)

Approval Criteria Applicable to all Applications Unless otherwise specified in this Title, City review and decision-making bodies shall review all development applications and staff reports submitted pursuant to this article for compliance with the applicable general review criteria stated below.

- (1) **Consistency with the Reno Master Plan** The proposed development shall be consistent with the Reno Master Plan. The decision-making authority:
 - a. Shall weigh competing plan goals, policies, and strategies; and
 - b. May approve an application that provides a public benefit even if the development is contrary to some of the goals, policies, or strategies in the Reno Master Plan...
- (3) **Mitigates Traffic Impacts** The project mitigates traffic impacts based on applicable standards of the City of Reno and the Regional Transportation Commission.
- (4) **Provides Safe Environment** The project provides a safe environment for pedestrians and people on bicycles...

RENO MASTER PLAN



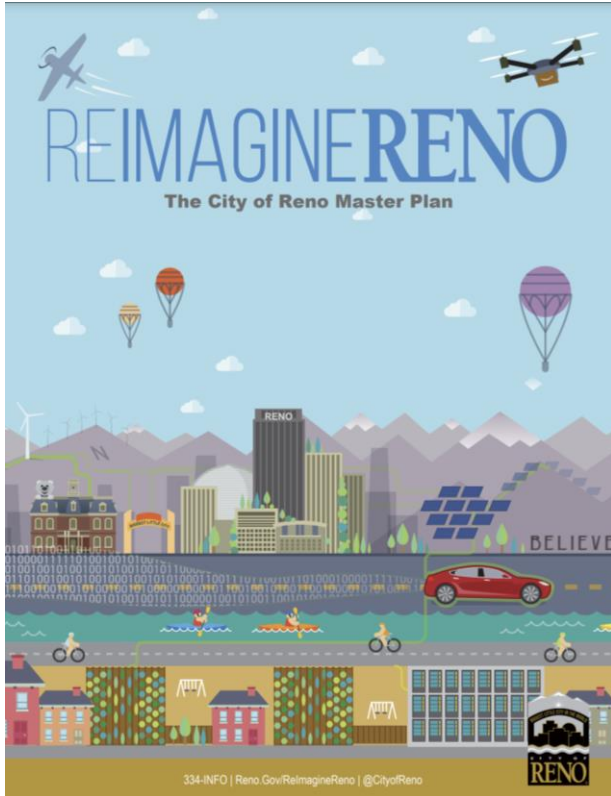
1.5D: EDUCATION

Identify ways to support education programs of Washoe County School District, UNR, TMCC, and other educational institutions and further advance their missions.

2.4K: WASHOE COUNTY SCHOOL DISTRICT

Collaborate with the Washoe County School District in planning for the design and location of new public schools in areas that advance the City's growth priorities, and the disposition and reuse of any schools that might become redundant in the city and its SOI.

RENO MASTER PLAN



6.7A: IMPACTS OF NEW DEVELOPMENT

Coordinate with the school district to evaluate the impact on school enrollments and capacity when reviewing projects, development proposals, zoning changes, land use amendments, or in other decisions that could significantly increase school enrollments. Ensure that developers set aside school sites when planned unit developments are approved, as needed.

6.7B: SCHOOL FUNDING

Support current and future efforts by the Washoe County School District to diversify and/or expand sources of revenue for the construction, operations, and/or maintenance of school facilities or for other purposes central to the school district's mission.

RENO MASTER PLAN

Growth and Reinvestment Framework

SCHOOLS

Concurrency Requirement: None

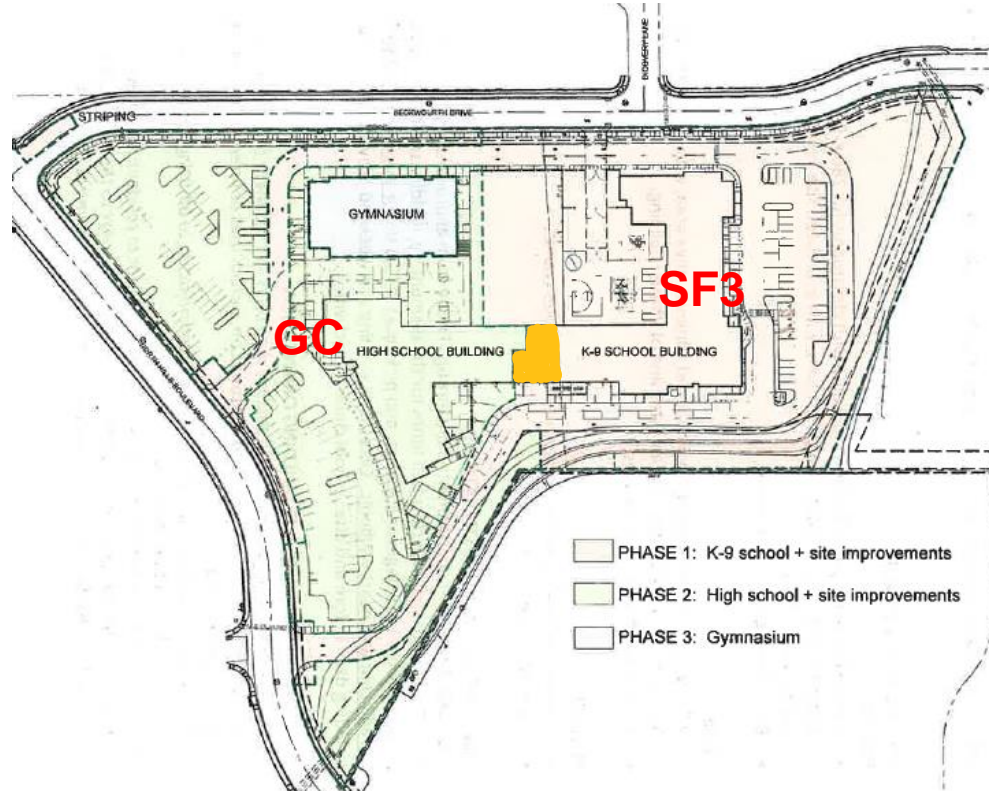
Level of Service Target: Public primary schooling in Reno is provided by the Washoe County School District (WCSD), which plans and develops new or expanded campuses to meet the demands created by new development based on its own resources and needs. The City will work with WCSD by involving the district in the review of development to ensure the implementation of mutual development goals. For example, school siting and design can help strengthen neighborhoods by providing a center for community activities that extends beyond the school day; the joint-use of school facilities can result in a more efficient use of public resources; and pedestrian and mobility standards between the two entities can be coordinated early on in the development review process.

RMC 18.08.604(e)

Findings In addition to meeting the criteria in Section 18.08.304(e), Approval Criteria Applicable to all Applications, the following findings shall be made prior to granting a minor conditional use permit:

- (1) The proposed location of the use is in accordance with the objectives of this Title and the purpose of the zoning district in which the site is located;
- (2) The proposed land use and project design is compatible with surrounding development;
- (3) The proposed land use and project design is consistent with applicable development standards;
- (4) Public services and facilities are available to serve the project, or will be provided with development;
- (5) The characteristics of the use as proposed and as may be conditioned are reasonably compatible with the types of use permitted in the surrounding area; and
- (6) The granting of the minor conditional use permit will not be materially detrimental to the public health, safety, or welfare. The factors to be considered in evaluating this application shall include:
 - a. Property damage or nuisance resulting from noise, smoke, odor, dust, vibration, or illumination; and
 - b. Any hazard to persons and property.

ZONING





THANK YOU