

NSEA

NEVADA STATE EDUCATION ASSOCIATION



CHRIS DALY, Political Director, Nevada State Education Association
ALLYSON UPDIKE, Teacher, Alice Smith Elementary School
GILBERT LENZ, Teacher, North Valleys Resident
CALEN EVAN, President, Washoe Education Association



NSEA

NEVADA STATE EDUCATION ASSOCIATION

- NSEA has been the voice of Nevada educators for 125 years.
- We represent over 11,000 educators across the state.
- Members include licensed educators, like teachers and counselors, as well as education support professionals including paraprofessionals, custodians, bus drivers, and school secretaries.

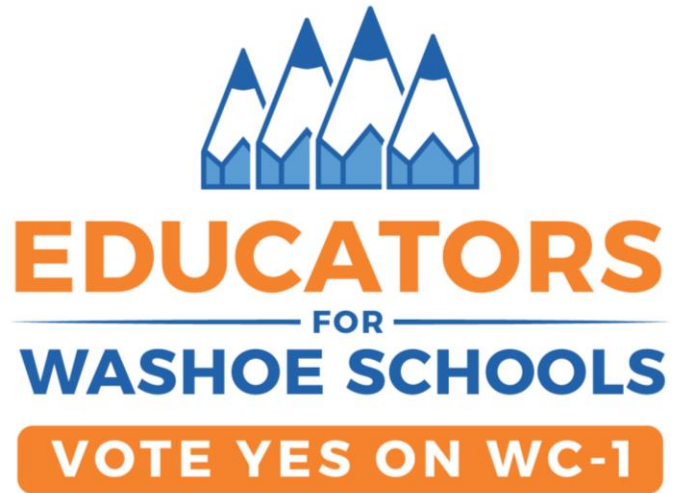


NSEA

NEVADA STATE EDUCATION ASSOCIATION

- **NSEA represents nearly 2000 educators living in the City of Reno, including about 250 living in the 89506 zip code.**
- **NSEA represents hundreds of educators working in impacted WCSD schools in the North Valleys.**

GOOD PLANNING



GOOD PLANNING



Facilities Plan 2020-2039

Prepared by:
Facilities Management Department
Washoe County School District | January 2020



For approval and action: FMP Recommendations

Washoe County School District
Facility Modernization Plan
Investments for Equity, Efficiency & Community

Dec 12, 2023

CANNONDESIGN

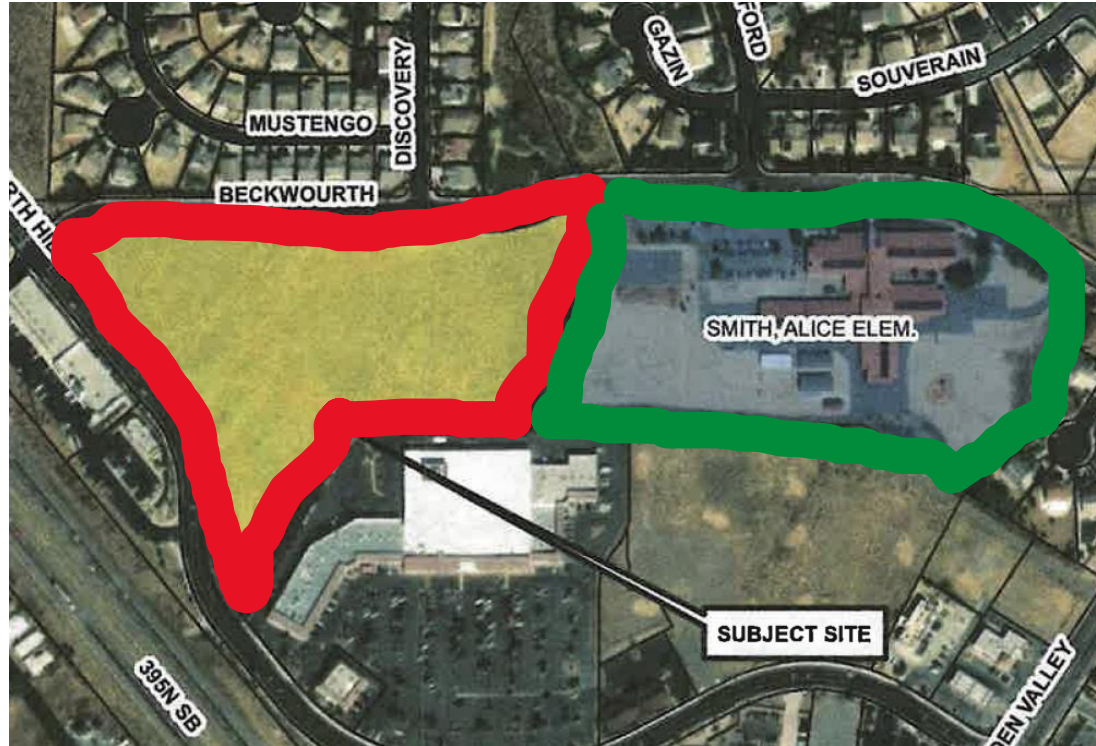
GOOD PLANNING



WCSD SCHOOL CAPACITY

School Name	Grades Served	22-23 Enrollment	% Capacity	% Minority	% IEP	% EL	% FRL
Bennett	K-5	538	75%	70.9	21.6	33.6	100.0
Desert Heights	K-5	463	65%	66.3	27.0	18.6	100.0
Elmcrest	K-5	319	58%	63.0	17.2	14.1	100.0
Lemmon Valley	K-5	714	89%	64.7	14.2	22.4	100.0
Silver Lake	K-5	424	79%	58.3	15.3	21.5	40.6
Alice Smith	K-5	501	72%	70.9	20.0	22.4	100.0
Stead	K-5	702	85%	70.9	14.1	24.9	100.0
Cold Springs MS	6th-8th	648	44%	42.9	17.6	6.0	34.7
Desert Skies MS	6th-8th	978	69%	81.1	15.8	23.9	100.0
O'Brien MS	6th-8th	1065	83%	74.7	14.7	17.7	100.0
North Valleys HS	9th-12th	2432	98%	64.6	14.4	13.7	37.1
Hug High	9th-12th	2331	96%	86.6	16.6	27.0	100.0

POOR PLANNING



POOR PLANNING



I.1 Mater Academy Minor Conditional Use Permit Appeal
RENO CITY COUNCIL
Wednesday, July 24, 2024



POOR PLANNING



Washoe County School District

425 East Ninth Street * P.O. Box 30425 * Reno, NV 89520-3425
Phone (775) 348-0200 * Fax (775) 348-0304 * www.washoeschools.net

Board of Trustees: Beth Smith, President * Adam Mayberry, Vice President * Joe Rodriguez, Clerk
Jeff Church * Diane Nicolet * Colleen Westlake * Alex Woodley * Kristen McNeill, Ed.D., Interim Superintendent

January 17, 2024

44% of its enrollment capacity. The possible impacts to schools as a result of the opening of MANN Golden Valley include impacted elementary schools seeing a total average enrollment of 62% of capacity, impacted middle schools falling to a total average enrollment of 60%, and as a result of MANN Golden Valley the impacted high schools are anticipated to fall to a total average enrollment of 80%. School closures at the elementary school level would be likely upon the opening of MANN Golden Valley. Alice Smith Elementary,

ALICE SMITH ELEMENTARY



ALICE SMITH ELEMENTARY



ALICE SMITH ELEMENTARY



ALICE SMITH ELEMENTARY



NORTH VALLEYS



NORTH VALLEYS



PEDESTRIAN & BICYCLE SAFETY



NEW STEAD ELEMENTARY





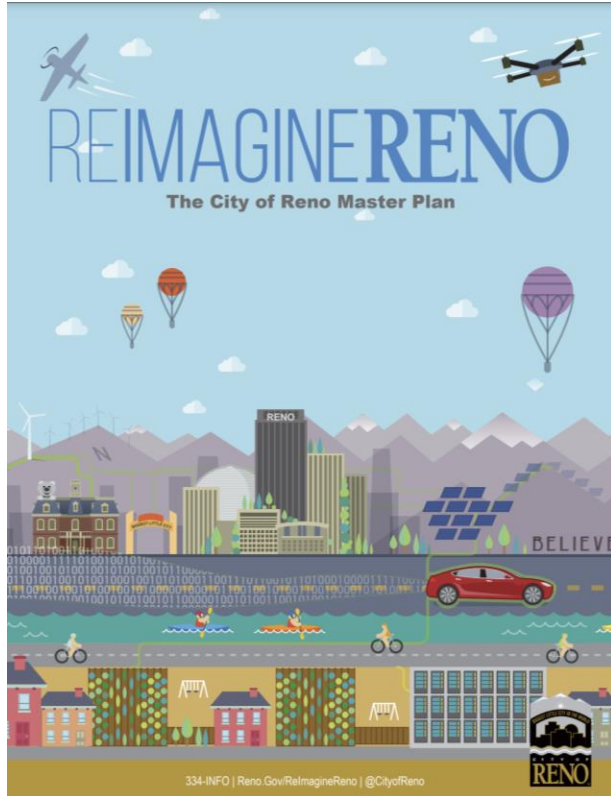
- **WEA has served Washoe educators since 1965.**
- **WEA represents about 4000 licensed professionals in the Washoe County School District.**
- **We believe the best possible working conditions are children's best possible learning conditions.**

RMC 18.08.304(e)

Approval Criteria Applicable to all Applications Unless otherwise specified in this Title, City review and decision-making bodies shall review all development applications and staff reports submitted pursuant to this article for compliance with the applicable general review criteria stated below.

- (1) **Consistency with the Reno Master Plan** The proposed development shall be consistent with the Reno Master Plan. The decision-making authority:
 - a. Shall weigh competing plan goals, policies, and strategies; and
 - b. May approve an application that provides a public benefit even if the development is contrary to some of the goals, policies, or strategies in the Reno Master Plan...
- (3) **Mitigates Traffic Impacts** The project mitigates traffic impacts based on applicable standards of the City of Reno and the Regional Transportation Commission.
- (4) **Provides Safe Environment** The project provides a safe environment for pedestrians and people on bicycles...

RENO MASTER PLAN



2.4K: WASHOE COUNTY SCHOOL DISTRICT

Collaborate with the Washoe County School District in planning for the design and location of new public schools in areas that advance the City's growth priorities, and the disposition and reuse of any schools that might become redundant in the city and its SOI.



THANK YOU