

BEFORE



REVISED



REVISIONS

- **Roofline** – Requested more vertical and horizontal articulation
 - Opening up balconies did much of the work here
 - We've also added in roof / parapet projections
- **Massing** – Requested more articulation, particularly at corners
 - Opening up balconies achieved the desired look
- **Colors** – Requested lighter colors up top, darker base
 - Omitted the darker stucco colors altogether in response to feedback previously
- **Balconies** – Requested to open up, particularly at corners
 - Substituting faux wood siding and wood tone colors where we've opened up balconies

BEFORE



REVISED



BEFORE



REVISED



BEFORE



REVISED



BEFORE



REVISED



BEFORE



REVISED



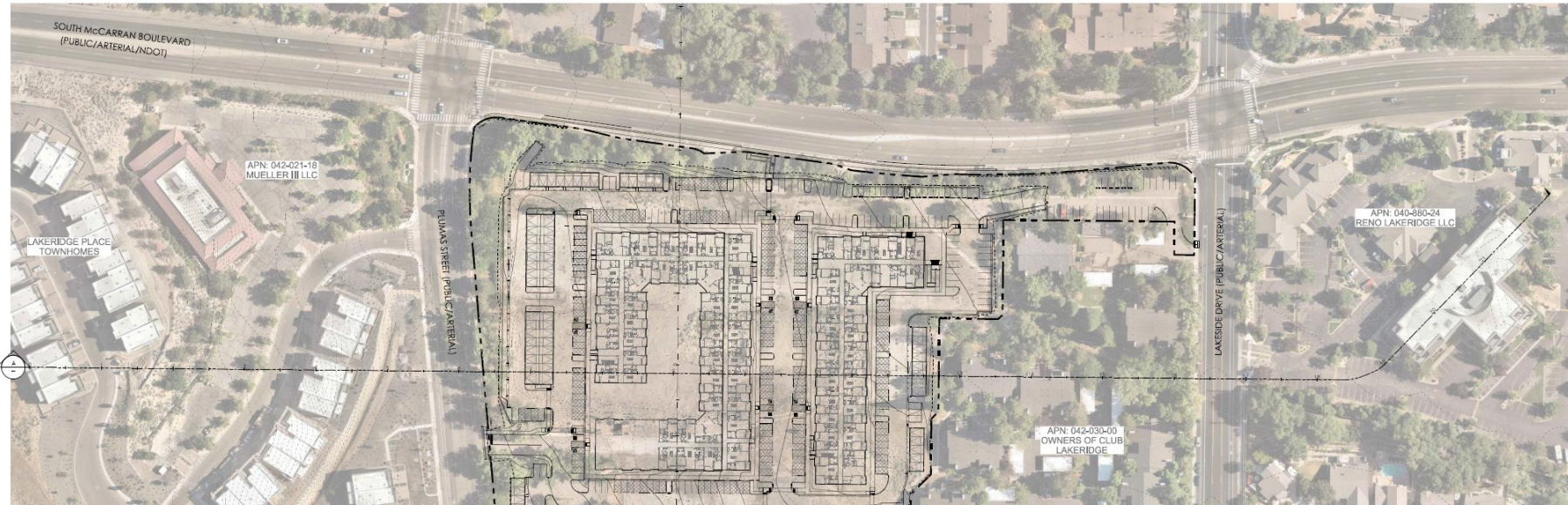
REVISED



REVISIONS

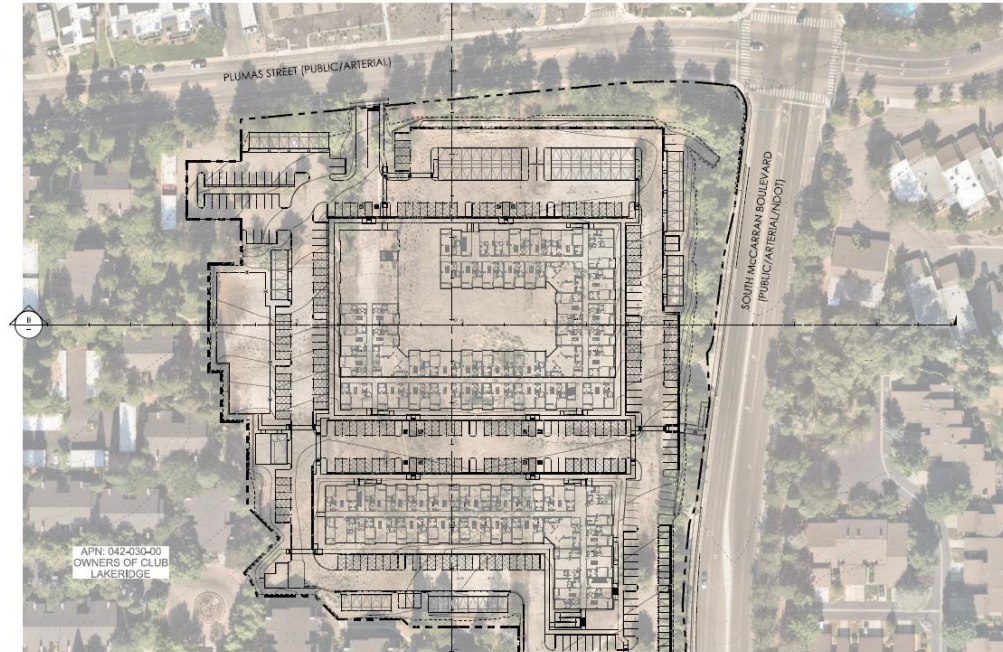
- **Roofline** – Requested more vertical and horizontal articulation
 - Opening up balconies did much of the work here
 - We've also added in roof / parapet projections
- **Massing** – Requested more articulation, particularly at corners
 - Opening up balconies achieved the desired look
- **Colors** – Requested lighter colors up top, darker base
 - Omitted the darker stucco colors altogether in response to feedback previously
- **Balconies** – Requested to open up, particularly at corners
 - Substituting faux wood siding and wood tone colors where we've opened up balconies

RENO, NEVADA
FEBRUARY, 2025

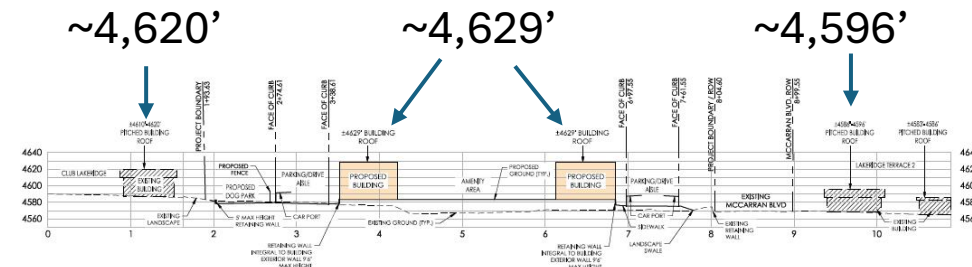


PRELIMINARY CROSS SECTIONS EXHIBIT PLUMAS REDEVELOPMENT

RENO, NEVADA
FEBRUARY, 2025



SITE PLAN
SCALE: 1"=40'



CROSS SECTION B - LOOKING WEST TOWARD PLUMAS STREET

SCALE
HORIZ: 1"=40'
VERT: 1"=40'

