
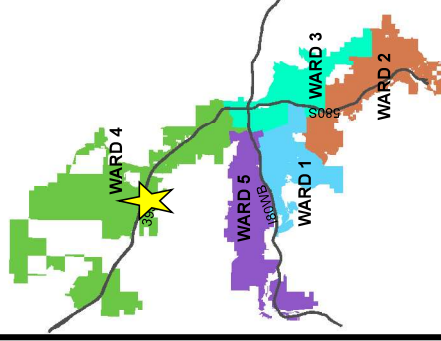


AREA MAP

LDC24-00017

(US-395 Exit 76
Gas Station and
Warehouse Amendment)

Subject Site ► 



WARD 4



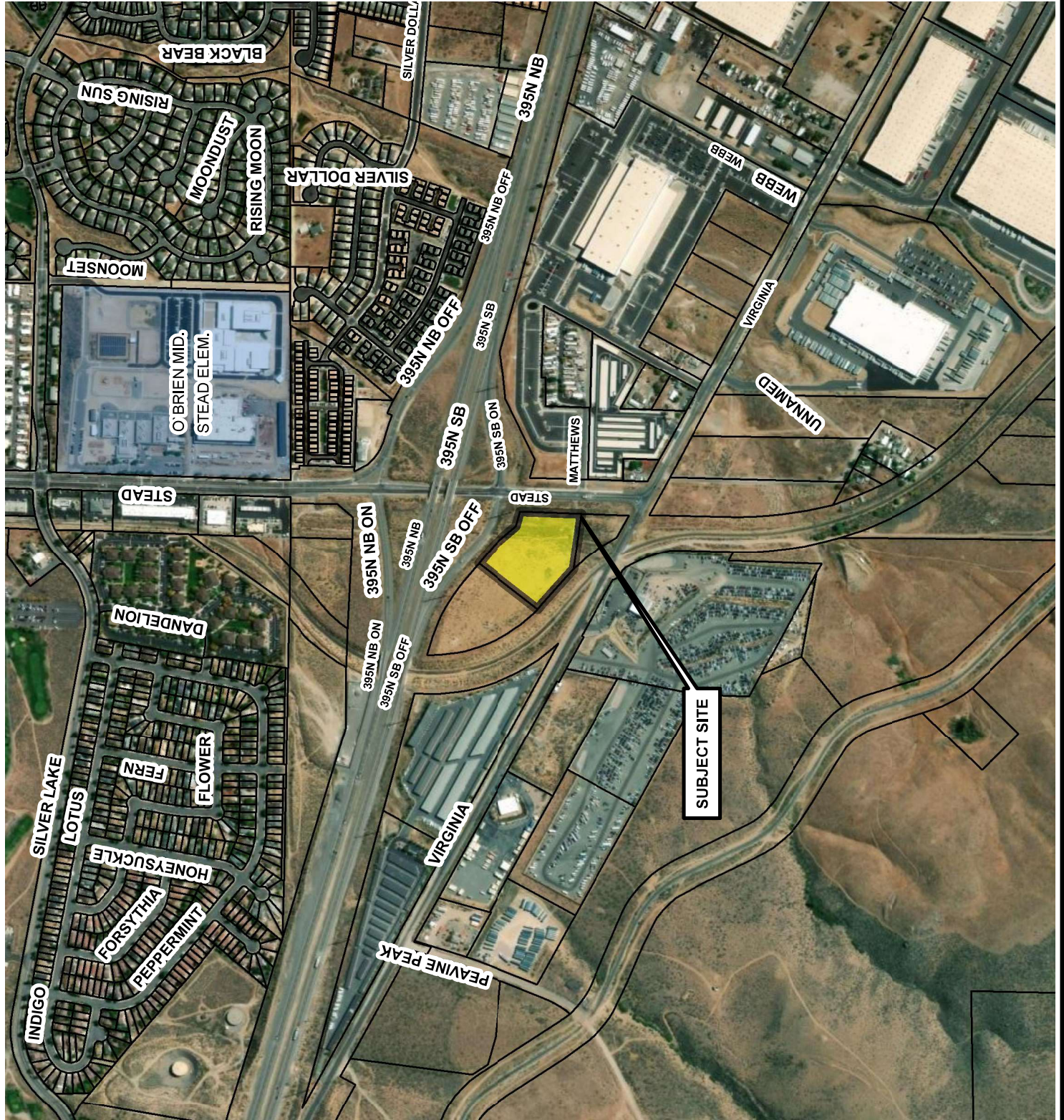
Development
Services
Department



The information hereon
is approximate and
is intended for display
purposes only.

Date: October 2023


Scale: 1 inch = 800 feet

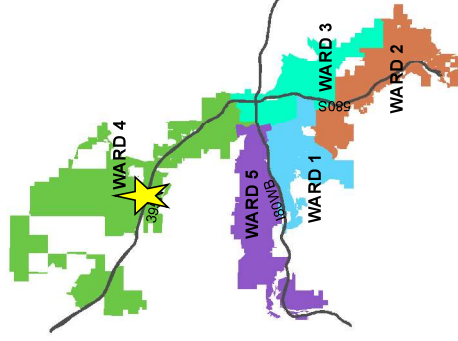


VICINITY MAP

LDC24-00017

(US-395 Exit 76
Gas Station and
Warehouse Amendment)

Subject Site ► 



WARD 4



Development
Services
Department



The information herein
is approximate and
is intended for display
purposes only.

Date: October 2023

Scale: 1 inch = 400 feet




ZONING MAP











LDC24-00017

(US-395 Exit 76
Gas Station and
Warehouse Amendment)

ZONING = MS

Subject Site ► 

Zoning Designations

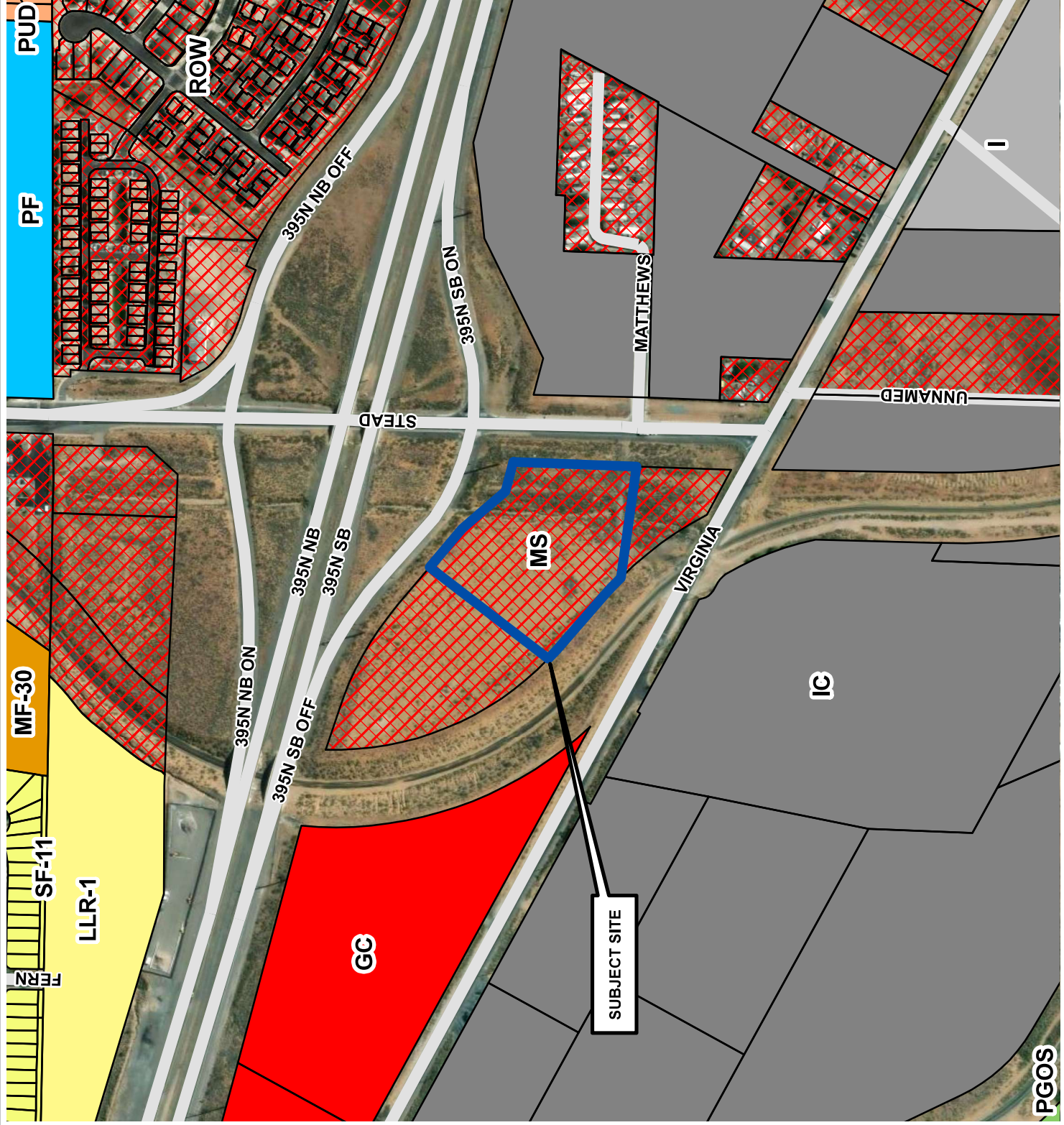
	PUD
	SF-11
	MF-30
	LLR-1
	MS
	GC
	I
	IC
	PGOS
	PF



Development
Services
Department

The information herein
is approximate and
is intended for display
purposes only.


DATE: October 2023
SCALE: 1 inch = 400 feet

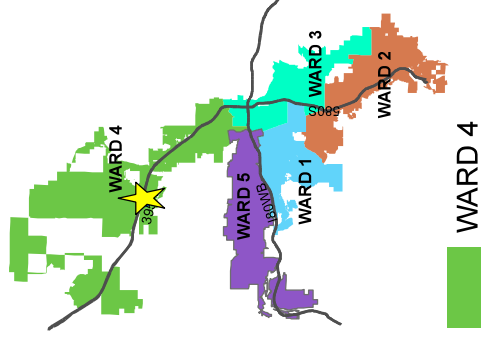


MASTER PLAN MAP

LDC24-00017

(US-395 Exit 76
Gas Station and
Warehouse Amendment)

Subject Site ► 

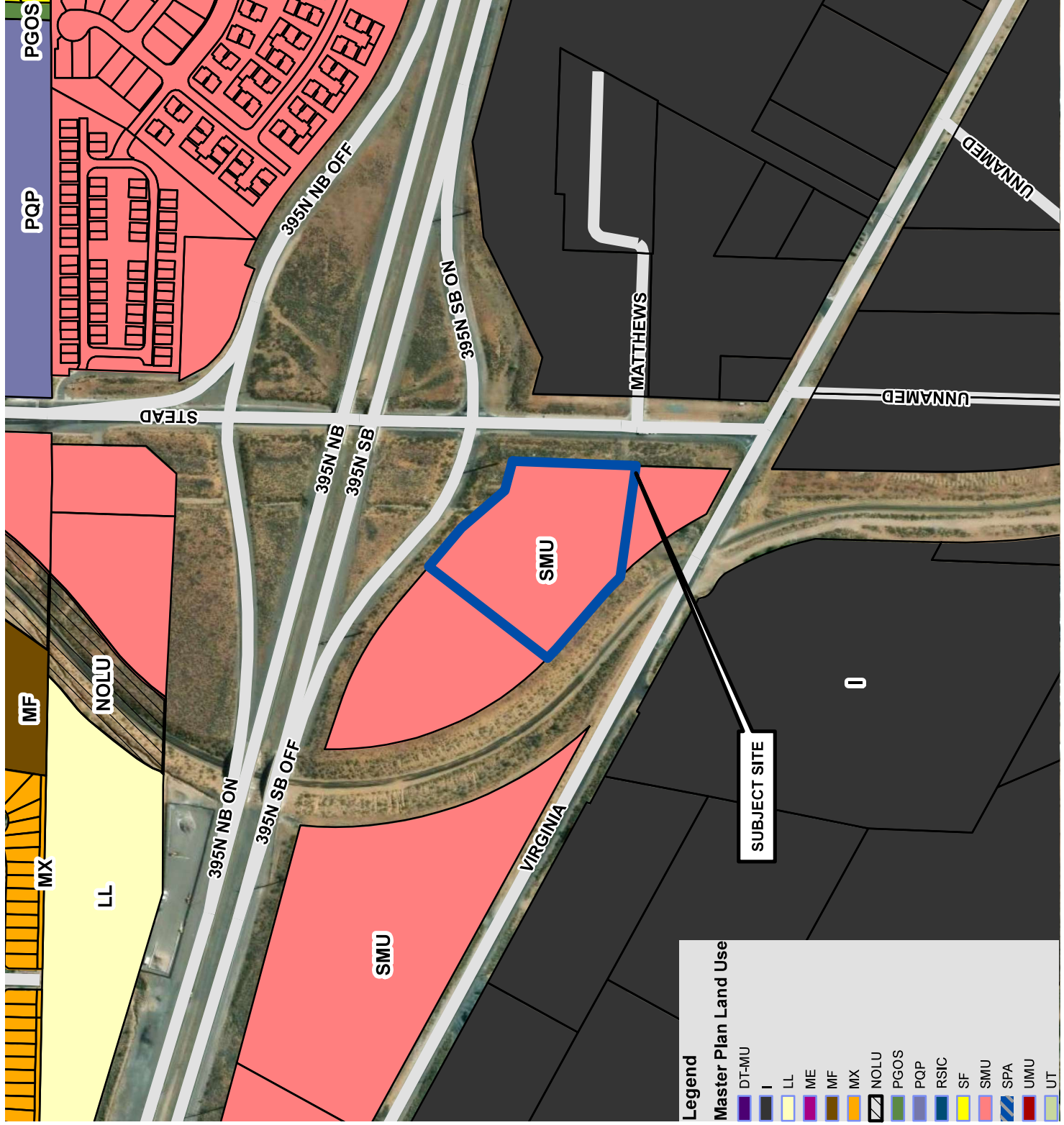


Development
Services
Department



The information herein
is approximate and
is intended for display
purposes only.

Date: October 2023
Scale: 1 inch = 400 feet



Legend

Master Plan Land Use

	DT-MU
	I
	LL
	ME
	MF
	MX
	NOLU
	PGOS
	PGP
	RSIC
	SF
	SMU
	SPA
	UMU
	UT