

PRELIMINARY  
NOT FOR CONSTRUCTION

GSR Reno Arena

Project Number	05.4889.000
----------------	-------------

Description	OVERALL EXTERIOR - WEST
1.00	1.00
2.00	2.00
3.00	3.00
4.00	4.00
5.00	5.00
6.00	6.00
7.00	7.00
8.00	8.00
9.00	9.00
10.00	10.00
11.00	11.00
12.00	12.00
13.00	13.00
14.00	14.00
15.00	15.00
16.00	16.00
17.00	17.00
18.00	18.00
19.00	19.00
20.00	20.00
21.00	21.00
22.00	22.00
23.00	23.00
24.00	24.00
25.00	25.00
26.00	26.00
27.00	27.00
28.00	28.00
29.00	29.00
30.00	30.00
31.00	31.00
32.00	32.00
33.00	33.00
34.00	34.00
35.00	35.00
36.00	36.00
37.00	37.00
38.00	38.00
39.00	39.00
40.00	40.00
41.00	41.00
42.00	42.00
43.00	43.00
44.00	44.00
45.00	45.00
46.00	46.00
47.00	47.00
48.00	48.00
49.00	49.00
50.00	50.00
51.00	51.00
52.00	52.00
53.00	53.00
54.00	54.00
55.00	55.00
56.00	56.00
57.00	57.00
58.00	58.00
59.00	59.00
60.00	60.00
61.00	61.00
62.00	62.00
63.00	63.00
64.00	64.00
65.00	65.00
66.00	66.00
67.00	67.00
68.00	68.00
69.00	69.00
70.00	70.00
71.00	71.00
72.00	72.00
73.00	73.00
74.00	74.00
75.00	75.00
76.00	76.00
77.00	77.00
78.00	78.00
79.00	79.00
80.00	80.00
81.00	81.00
82.00	82.00
83.00	83.00
84.00	84.00
85.00	85.00
86.00	86.00
87.00	87.00
88.00	88.00
89.00	89.00
90.00	90.00
91.00	91.00
92.00	92.00
93.00	93.00
94.00	94.00
95.00	95.00
96.00	96.00
97.00	97.00
98.00	98.00
99.00	99.00
100.00	100.00

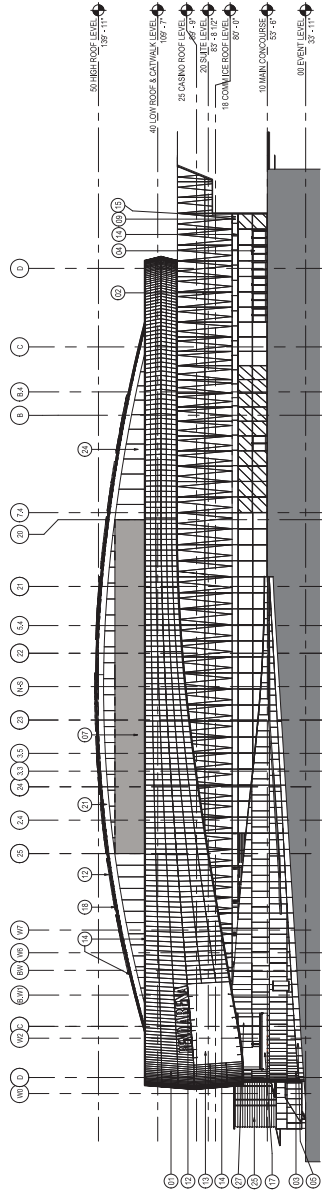
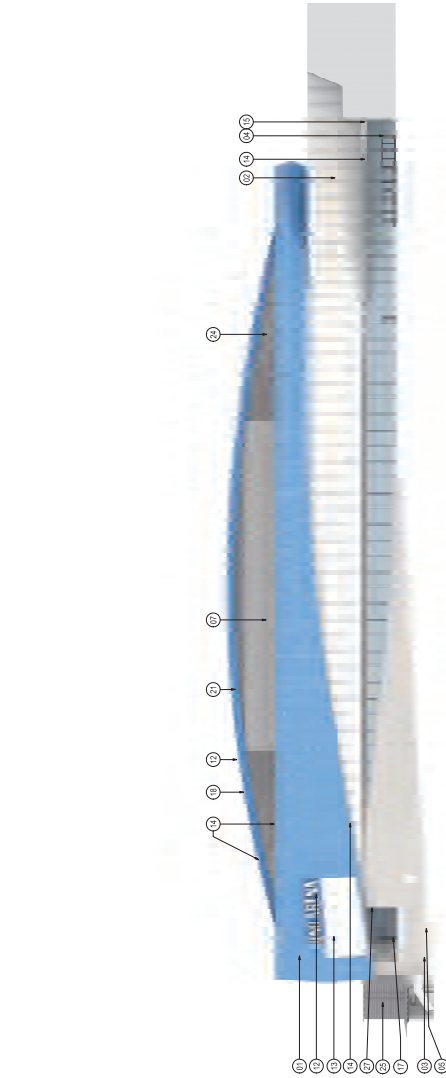
Scale  
1" = 20' 0"

1-30-0

# A5.010

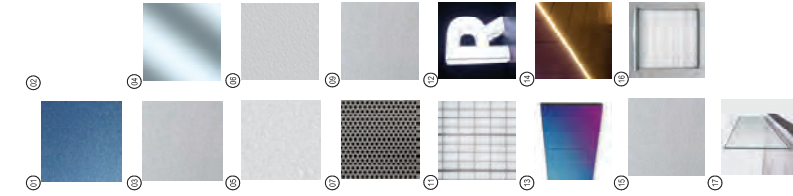






## 01 OVERALL EXTERIOR ELEVATION - SOUTH CUP

SCALE: 1" = 30'-0"

PRELIMINARY  
NOT FOR CONSTRUCTION

GSR Reno Arena

Project Number	05.4889.000
----------------	-------------

Description	Overall Exterior - South
1.00	1.00
2.00	2.00
3.00	3.00
4.00	4.00
5.00	5.00
6.00	6.00
7.00	7.00
8.00	8.00
9.00	9.00
10.00	10.00
11.00	11.00
12.00	12.00
13.00	13.00
14.00	14.00
15.00	15.00
16.00	16.00
17.00	17.00
18.00	18.00
19.00	19.00
20.00	20.00
21.00	21.00
22.00	22.00
23.00	23.00
24.00	24.00
25.00	25.00
26.00	26.00
27.00	27.00
28.00	28.00
29.00	29.00
30.00	30.00
31.00	31.00
32.00	32.00
33.00	33.00
34.00	34.00
35.00	35.00
36.00	36.00
37.00	37.00
38.00	38.00
39.00	39.00
40.00	40.00
41.00	41.00
42.00	42.00
43.00	43.00
44.00	44.00
45.00	45.00
46.00	46.00
47.00	47.00
48.00	48.00
49.00	49.00
50.00	50.00
51.00	51.00
52.00	52.00
53.00	53.00
54.00	54.00
55.00	55.00
56.00	56.00
57.00	57.00
58.00	58.00
59.00	59.00
60.00	60.00
61.00	61.00
62.00	62.00
63.00	63.00
64.00	64.00
65.00	65.00
66.00	66.00
67.00	67.00
68.00	68.00
69.00	69.00
70.00	70.00
71.00	71.00
72.00	72.00
73.00	73.00
74.00	74.00
75.00	75.00
76.00	76.00
77.00	77.00
78.00	78.00
79.00	79.00
80.00	80.00
81.00	81.00
82.00	82.00
83.00	83.00
84.00	84.00
85.00	85.00
86.00	86.00
87.00	87.00
88.00	88.00
89.00	89.00
90.00	90.00
91.00	91.00
92.00	92.00
93.00	93.00
94.00	94.00
95.00	95.00
96.00	96.00
97.00	97.00
98.00	98.00
99.00	99.00
100.00	100.00

Scale

$$1'' = 30' \cdot 10''$$

City Approval Stamp

**A5.040.**

