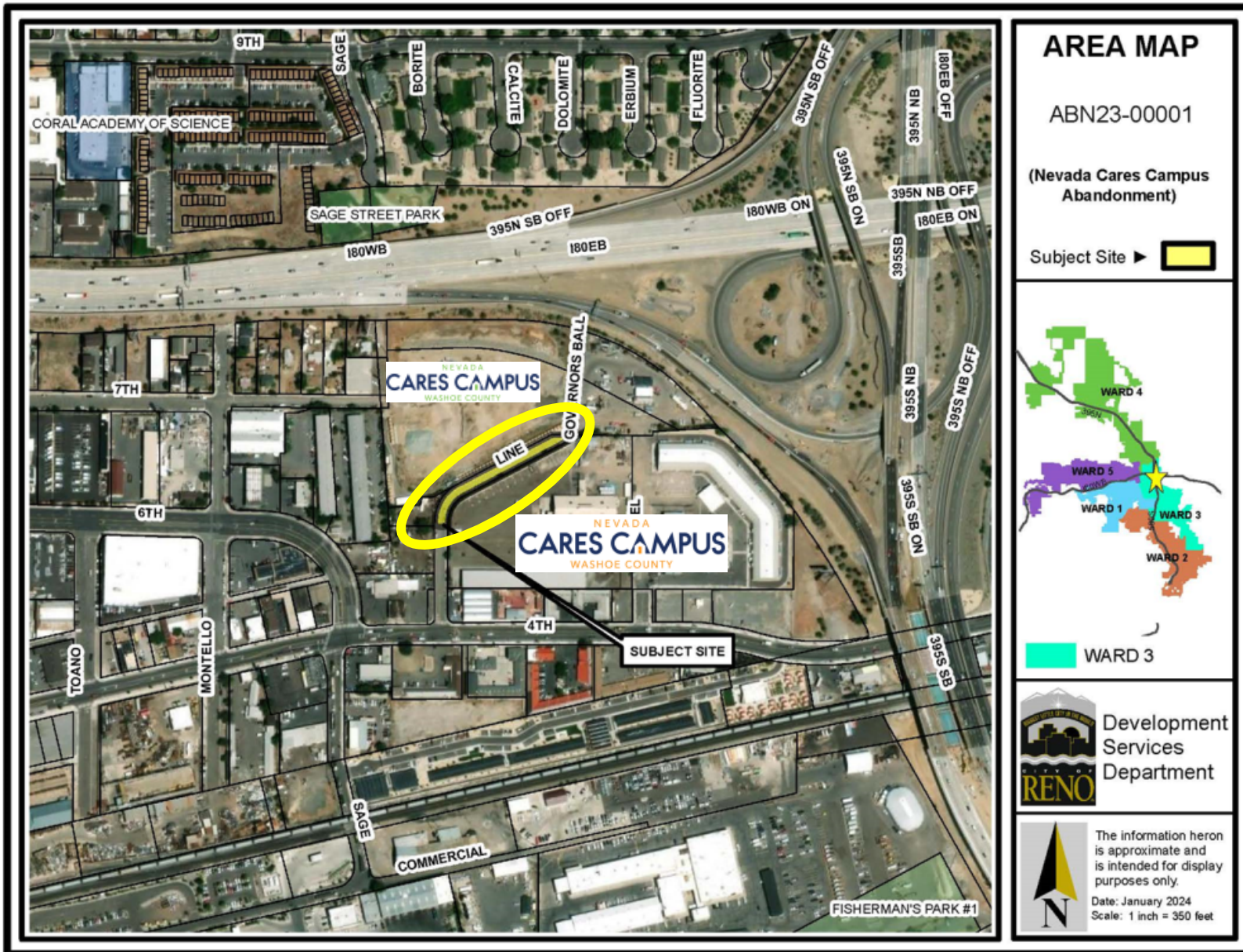


ABN23-00001

(Line Drive Abandonment)

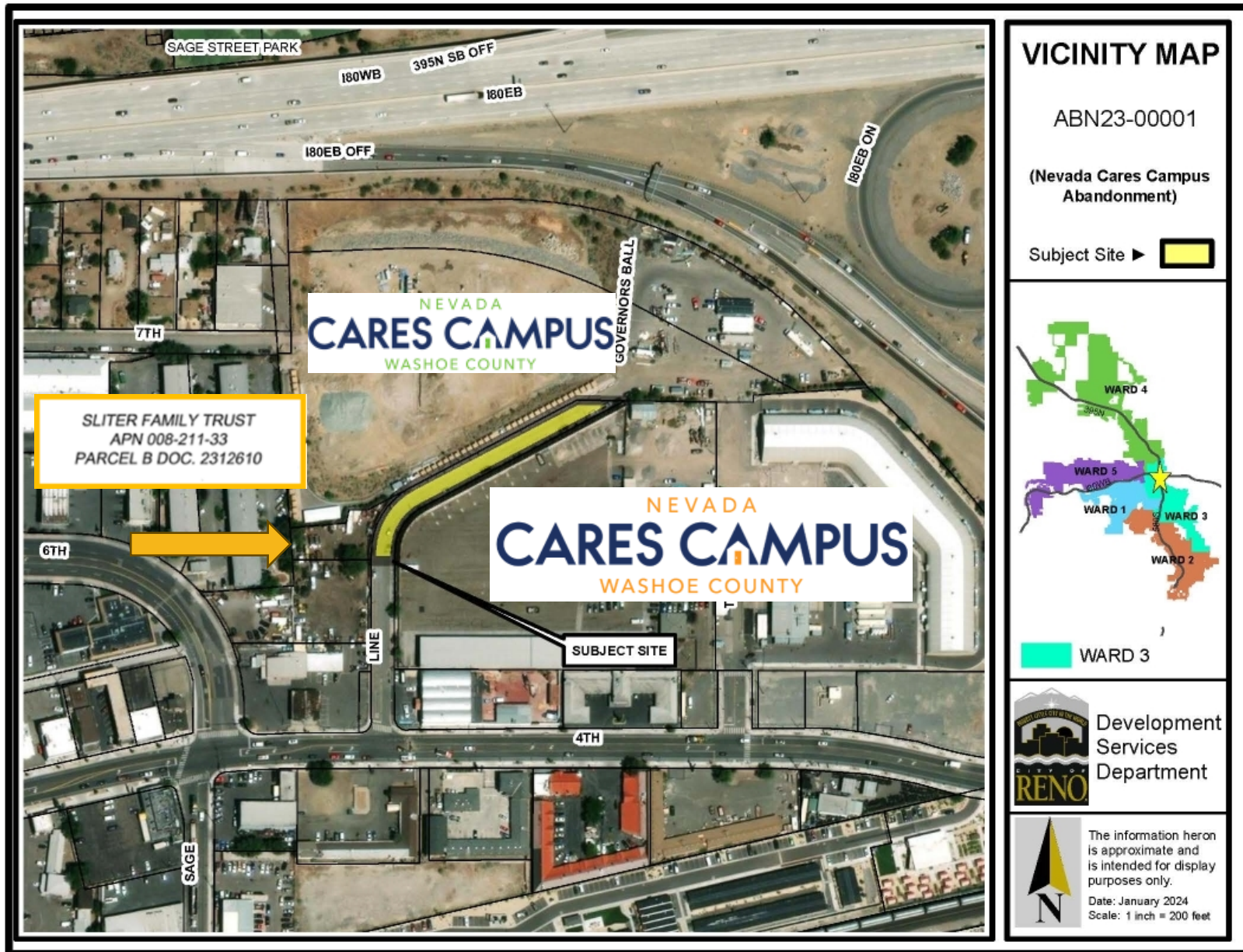
Reno City Council
January 24, 2024





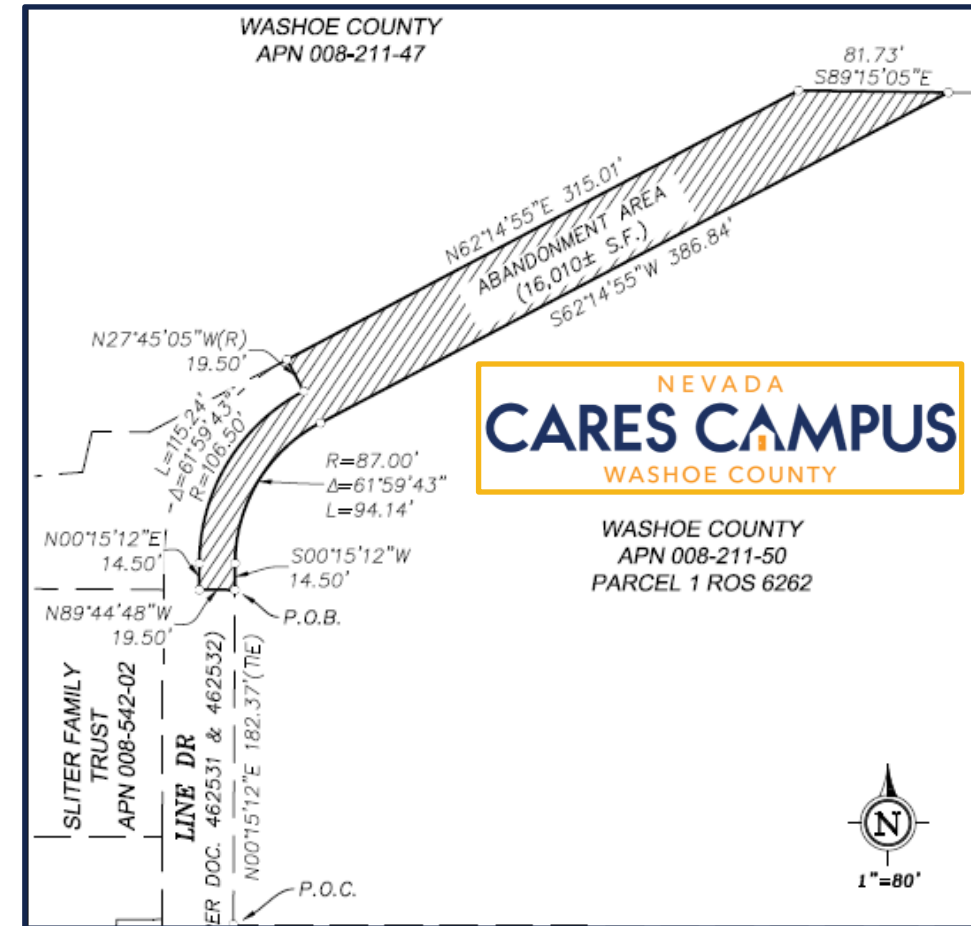
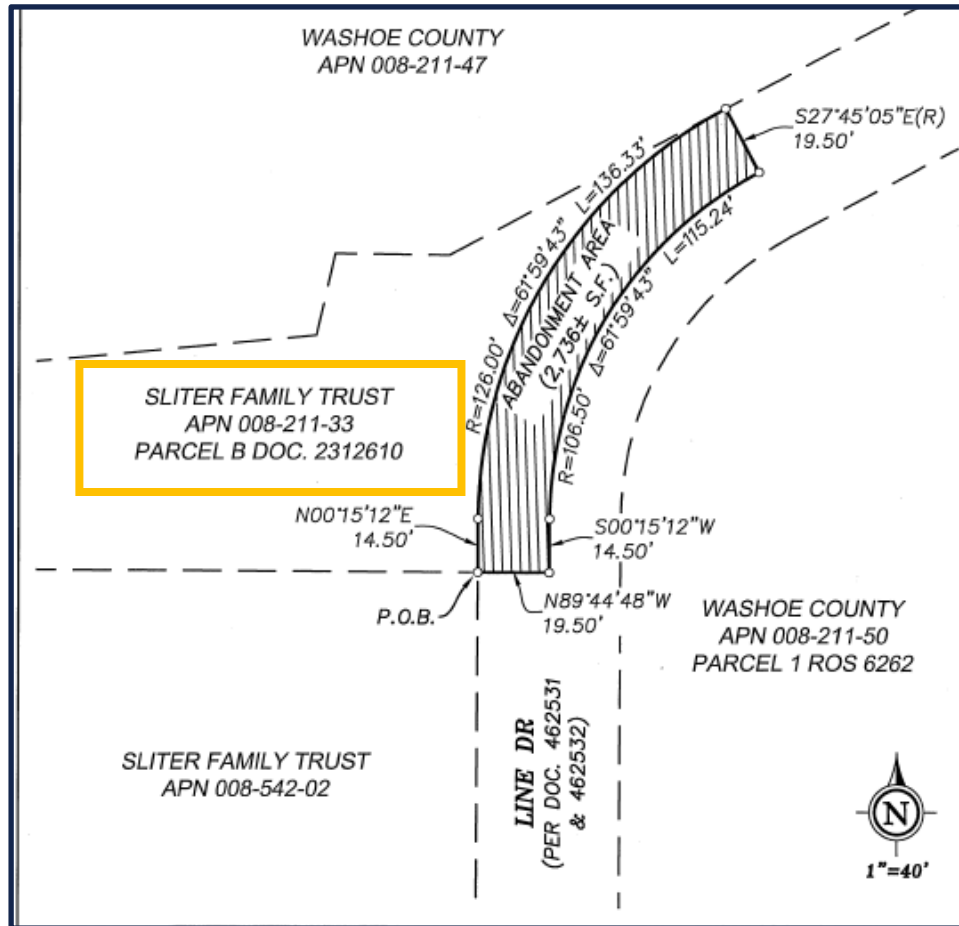
Request:

- Abandonment of a portion of Line Drive
- ±18,746 square feet



Background:

- LDC22-00033 (Washoe County Safe Camp) & LDC21-00025 (Nevada Cares Campus)
- November 2, 2022 - LDC23-00014 encompassed the entirety of the project in a conceptual phasing plan for future development
- Abandonment will tie the two parcels together to support the expansion of the Nevada CARES campus.



- ±18,746 square feet

Southern Point of the Abandonment Area



Abandonment Area



Recommended Abandonment Finding

Abandonment Finding	Staff Review and Analysis	Recommendation
The public will not be materially injured by the proposed abandonment.	The abandonment will allow the campus to grow and continue to provide vital services to the unhoused community.	✓ Yes

Recommended Motion

I move to approve the staff recommendation and can make the determination that the public will not be materially injured by the proposed vacation and approve the abandonment, subject to the conditions listed in the staff report.

ZONING MAP

ABN23-00001

(Nevada Cares Campus
Abandonment)

ZONING = None

Subject Site ► 

Zoning Designations

	MF-30
	MU
	PF



Development
Services
Department



The information heron
is approximate and
is intended for display
purposes only.

DATE: January 2024
SCALE: 1 inch = 200 feet

Zoning District:

- Mixed-Use Urban

