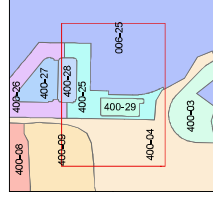
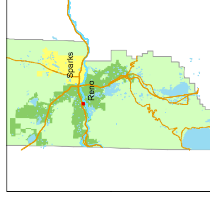
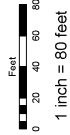


Assessor's Map Number
400-25

STATE OF NEVADA
WASHOE COUNTY
ASSESSOR'S OFFICE
1001 East Ninth Street, Building D
Reno, Nevada 89512
(775) 328-2231

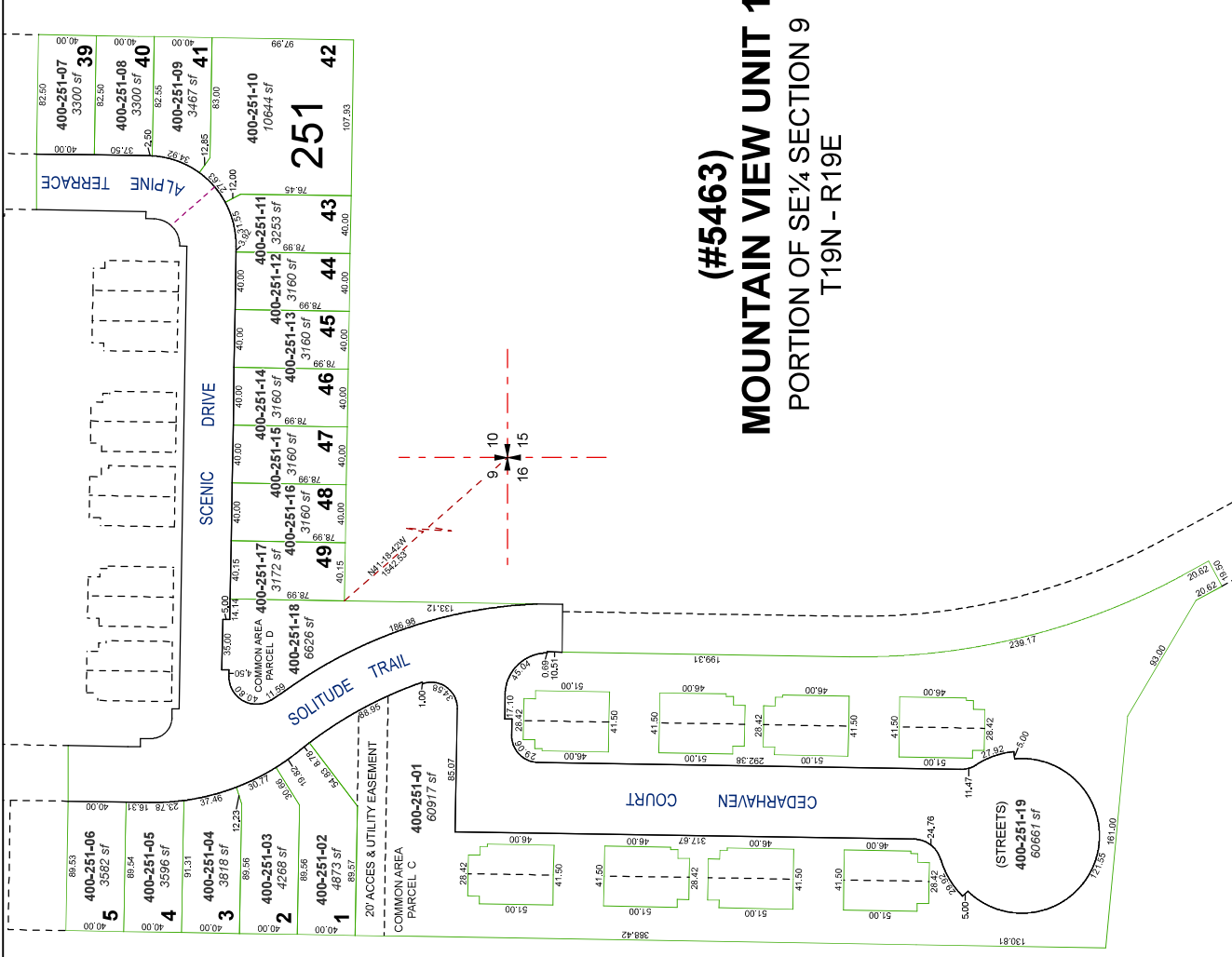


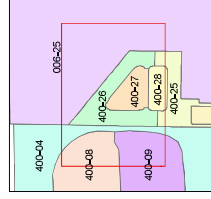
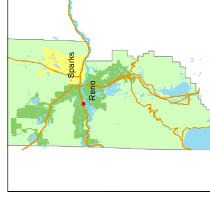
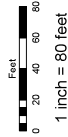
created by: SR 12/15/2021

updated:

area previously shown on map(s)

NOTE: This map was prepared for the use of the Washoe County Assessor for assessment and illustrative purposes only. It does not represent a survey of the premises. No liability is assumed as to the sufficiency or accuracy of the data delineated hereon.





created by: **SR 12/15/2021**
updated:

area previously shown on map(s):
006-25

NOTE: This map was prepared for the use of the Washoe County Assessor for assessment and illustrative purposes only. It does not represent a legal description of land and should not be relied upon as to the sufficiency or accuracy of the data delineated herein.

(#5463)
MOUNTAIN VIEW UNIT 1
PORTION OF SE $\frac{1}{4}$ SECTION 9
T19N - R19E

