

MARK REIGELMAN II

BACKGROUND, PRACTICE & APPROACH

CITY OF RENO PUBLIC SAFETY CENTER | KUENZLI STREET PUBLIC ARTWORK



**ALLOW THE SITE TO INFORM  
THE EXPERIENCE**

# RESEARCH

---

RESEARCH, OBSERVATION, DOCUMENTATION & ENGAGEMENT



DOCUMENTATION







COMMUNITY ENGAGEMENT (COFFEE DATES)



## LECTURES



## PROJECTS

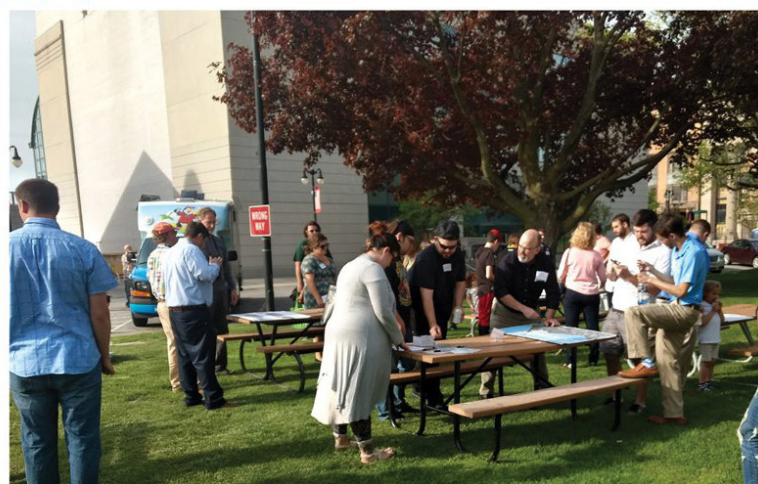


## EVENTS

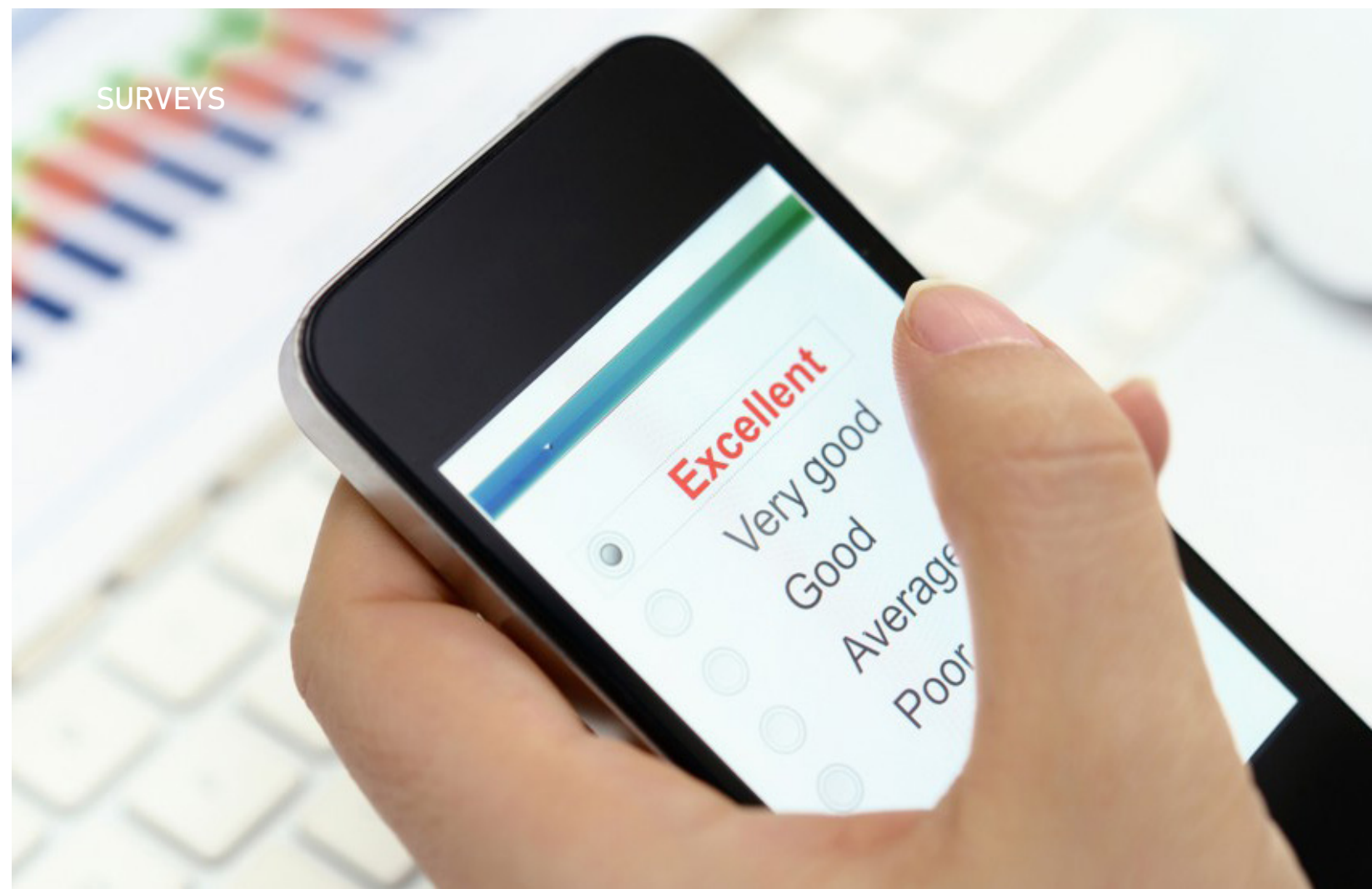
# PUBLIC ART POPSICLE POP UP

JOIN THE CITY OF SANDUSKY FOR A  
DISCUSSION ON PUBLIC ART OVER  
POPSICLES AND KONA ICE SNO-CONES  
AT  
**WASHINGTON  
PARK**

THURSDAY, MAY 17, 2018  
6:00 - 7:30 PM



## SURVEYS





- TELL ME ABOUT THE **HISTORY AND CHARACTER** OF THIS AREA.
- ARE THERE LEGENDS, **FOLKLORE** OR ANECDOTES YOU CAN SHARE?
- WHERE IS YOUR **FAVORITE PLACE** IN THIS REGION AND WHY?
- WHAT ELSE DO I **NEED TO KNOW** ABOUT THIS LOCATION?
- WHAT **ROLE** DOES THE FACILITY PLAY IN YOUR EVERYDAY LIFE?



**MEET PEOPLE WHERE THEY ARE.  
COMMUNICATION LEADS TO  
COMMUNITY**







## **PROJECT KEYWORDS:**

**SERVICE & INTEGRITY**

**RESPECT & FAIRNESS**

**HIGHLY VISIBLE**

**LIGHTED ELEMENTS**

**LARGE & IMPACTFUL**

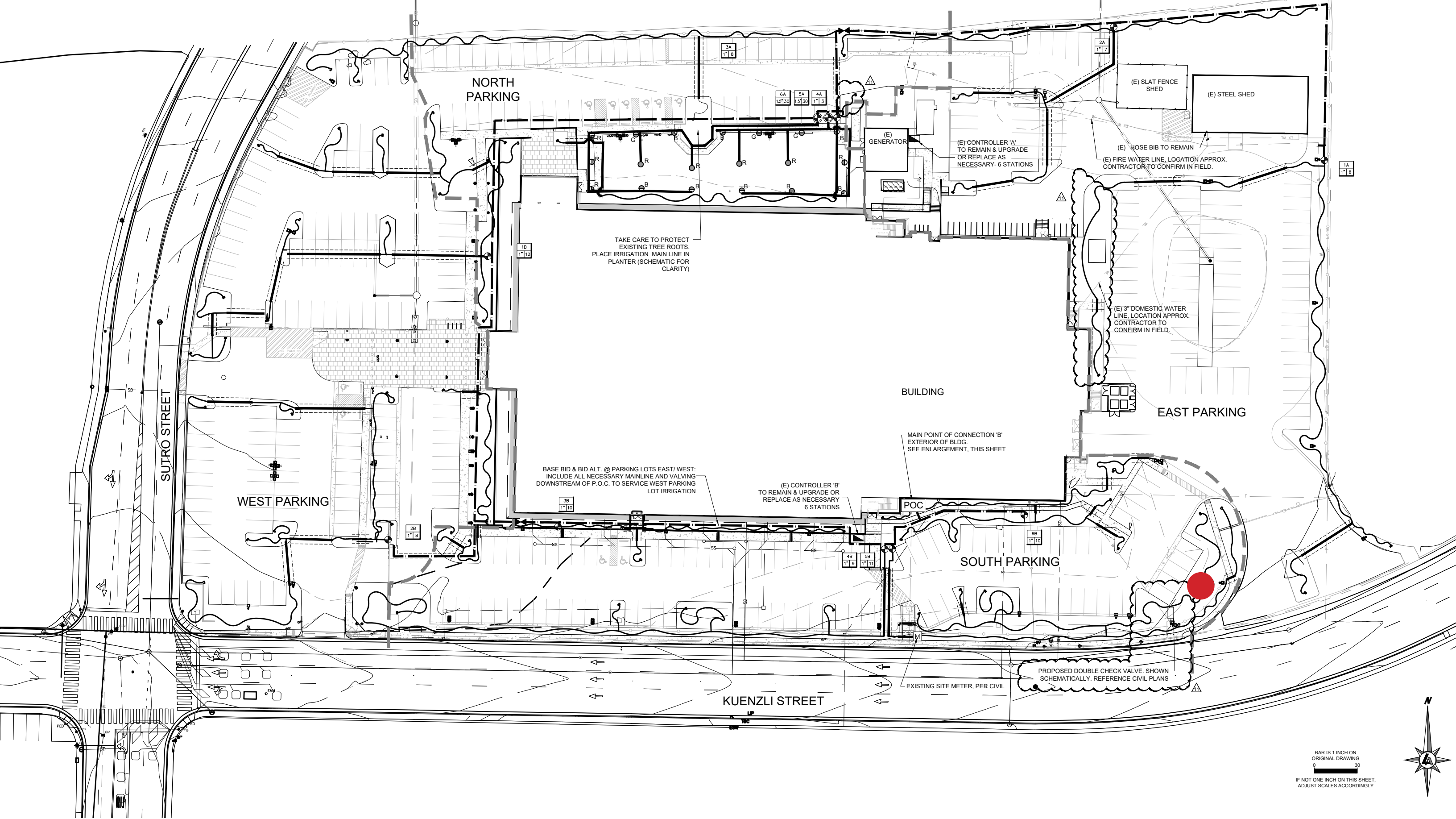
**HISTORY OF AREA**

**UNIQUE CHARACTER**

**DYNAMIC FOR VARIETY OF USERS**



ARTWORK LOCATION



BAR IS 1 INCH ON  
ORIGINAL DRAWING  
0 30  
IF NOT ONE INCH ON THIS SHEET,  
ADJUST SCALES ACCORDINGLY





SITE ANALYSIS





## WASHOE PEOPLE

PIÑON PINE NUTS WERE A STAPLE OF THEIR DIET, AND THE PIÑON PINE WAS CONSIDERED SACRED TO THE WASHOE



A PORTRAIT OF LOUISA KEYSER, THE RENOWNED WASHOE BASKET MAKER



## RAILROAD TOWN



THE DISCOVERY OF GOLD LED TO THE ESTABLISHMENT OF MINING CAMPS AND TOWNS BETWEEN 1848-1863, WHICH HELPED RENO GROW INTO A MINING HUB.



RENO BECAME A KEY STOP ON THE TRANSCONTINENTAL RAILROAD (1869), IT SERVED AS A GATEWAY TO THE SIERRA NEVADA REGION AND WAS A KEY STOP BEFORE REACHING SACRAMENTO



RENO



NEVADA LEGALIZED GAMBLING IN 1931. RENO QUICKLY BECAME A GAMBLING HUB AND SHAPED THE MODERN GAMBLING INDUSTRY.

ODEN-CYCLE-WORKS



RENO POLICE MOTORCYCLE OFFICERS CIRCA 1925

RENO



IN 1931, NEVADA'S LENIENT DIVORCE AND MARRIAGE LAWS DREW NATIONAL ATTENTION. RENO BECAME A HOTSPOT FOR "RENO-VATIONS," ATTRACTING CELEBRITIES AND SOCIALITES FOR QUICK DIVORCES AND MARRIAGES.



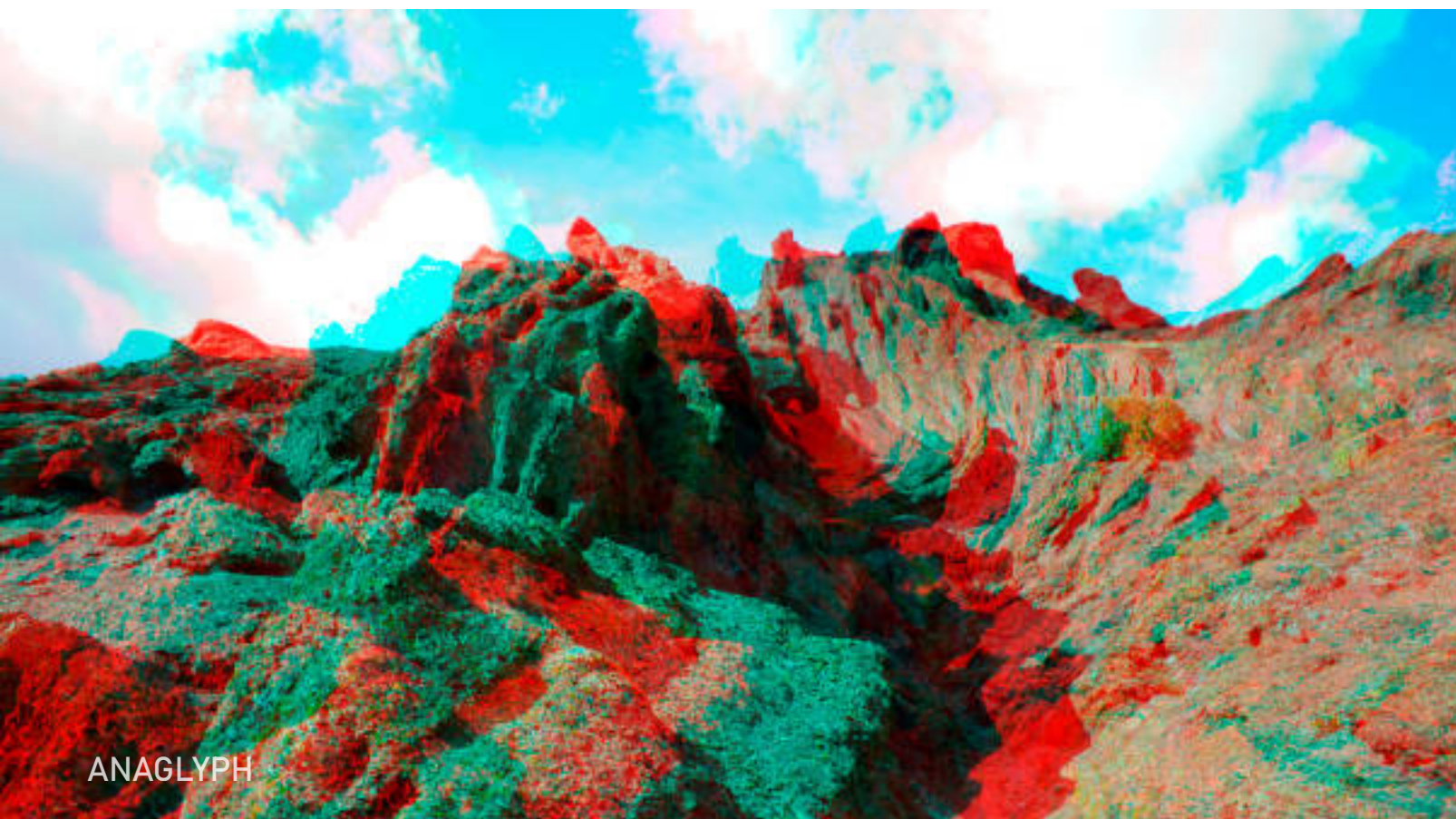
MARYLIN MONROE ON A PROMOTIONAL TOUR FOR "THE MISFITS", 1960 IN A 1960 T-BIRD.





"AT NIGHT"





ANAGLYPH



---

MARK REIGELMAN | BACKGROUND, PRACTICE & APPROACH