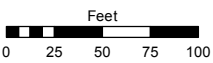


Assessor's Map Number

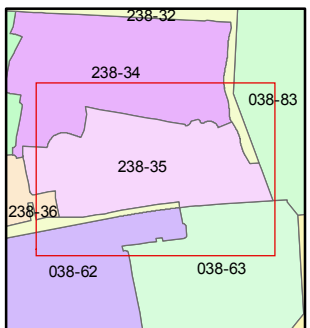
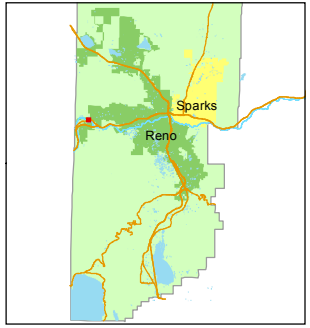
238-35

STATE OF NEVADA  
**WASHOE COUNTY**  
ASSESSOR'S OFFICE  
Michael E. Clark, Assessor

1001 East Ninth Street  
Building D  
Reno, Nevada 89512  
(775) 328-2231



1 inch = 100 feet



created by: JMO 8/29/2017

last updated: JMO 9/15/17

area previously shown on map(s)

038-83

NOTE:  
PARCELS A, B, C, E, F, G, AND H  
ARE COMMON ELEMENT AREAS,  
AS DEFINED IN THE DECLARATION  
OF THE CC & R DOCUMENT

NOTE: This map was prepared for the use of the Washoe County Assessor for assessment and illustrative purposes only. It does not represent a survey of the premises. No liability is assumed as to the sufficiency or accuracy of the data delineated hereon.