

SHEET INDEX OF CITY ENTITLEMENT DRAWINGS	
NO.	SHEET TITLE
C30.0	CITY ENTITLEMENT NEW SITE PLAN
C30.1	CITY ENTITLEMENT NEW SITE PLAN GENERAL NOTES
C31	CITY ENTITLEMENT EXISTING SITE PLAN
C32	CITY ENTITLEMENT DEMOLITION PLAN
C33.0	CITY ENTITLEMENT DRAINAGE AND DRAINAGE PLAN
C33.1	CITY ENTITLEMENT SECTIONS
C34	CITY ENTITLEMENT STORM DRAIN AND UTILITY PLAN
C35	CITY ENTITLEMENT PRELIMINARY STORMWATER QUALITY MANAGEMENT PLAN
C36	CITY ENTITLEMENT PRELIMINARY STORMWATER QUALITY MANAGEMENT PLAN
C37	CITY ENTITLEMENT HYDROLOGIC STUDY MAP - PROPOSED CONDITION
C38	CITY ENTITLEMENT TOPOGRAPHY SURVEY MAP
C39	CITY ENTITLEMENT RECORD BOUNDARY AND EASEMENT MAP
LPP-1	CITY ENTITLEMENT LANDSCAPE PLANTING PLAN
LPP-2	CITY ENTITLEMENT LANDSCAPE COLOR PLAN
LPP-3	CITY ENTITLEMENT LANDSCAPE PLANT PHOTO BOARD

REFER TO LEGEND ON SHEET C30.1 FOR ABBREVIATIONS AND SYMBOLS

CUMULATIVE DATA TABLE	
NO.	DATE
C1	07/07/07
C2	07/07/07
C3	07/07/07
C4	07/07/07

IN-N-OUT BURGER
880 E. PLUMB LANE
RENO, NV 89502

MSI ENGINEERING, INC.
CIVIL ENGINEER
880 E. PLUMB LANE
RENO, NV 89502
TEL: 775-784-1111
FAX: 775-784-1112

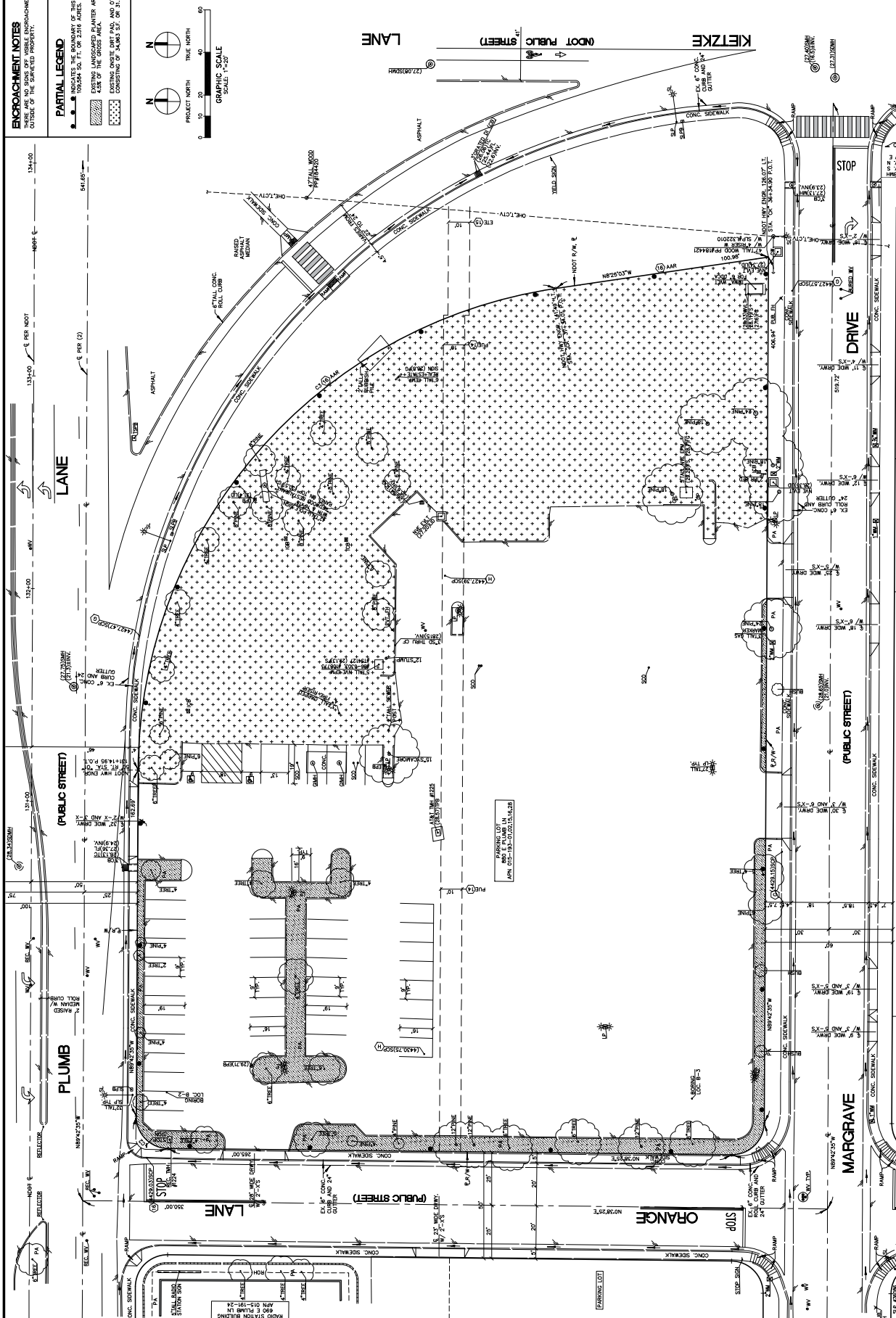
811
Know what's below.
Call before you dig.

IN-N-OUT BURGER
DEVELOPER
880 E. PLUMB LANE
BALDWIN PARK, CA 91706
CONTACT: PETER KULMATCHI
PHONE: 626 815-5378

CITY ENTITLEMENT
NEW SITE PLAN

SHEETS
1 OF 15

C30.1



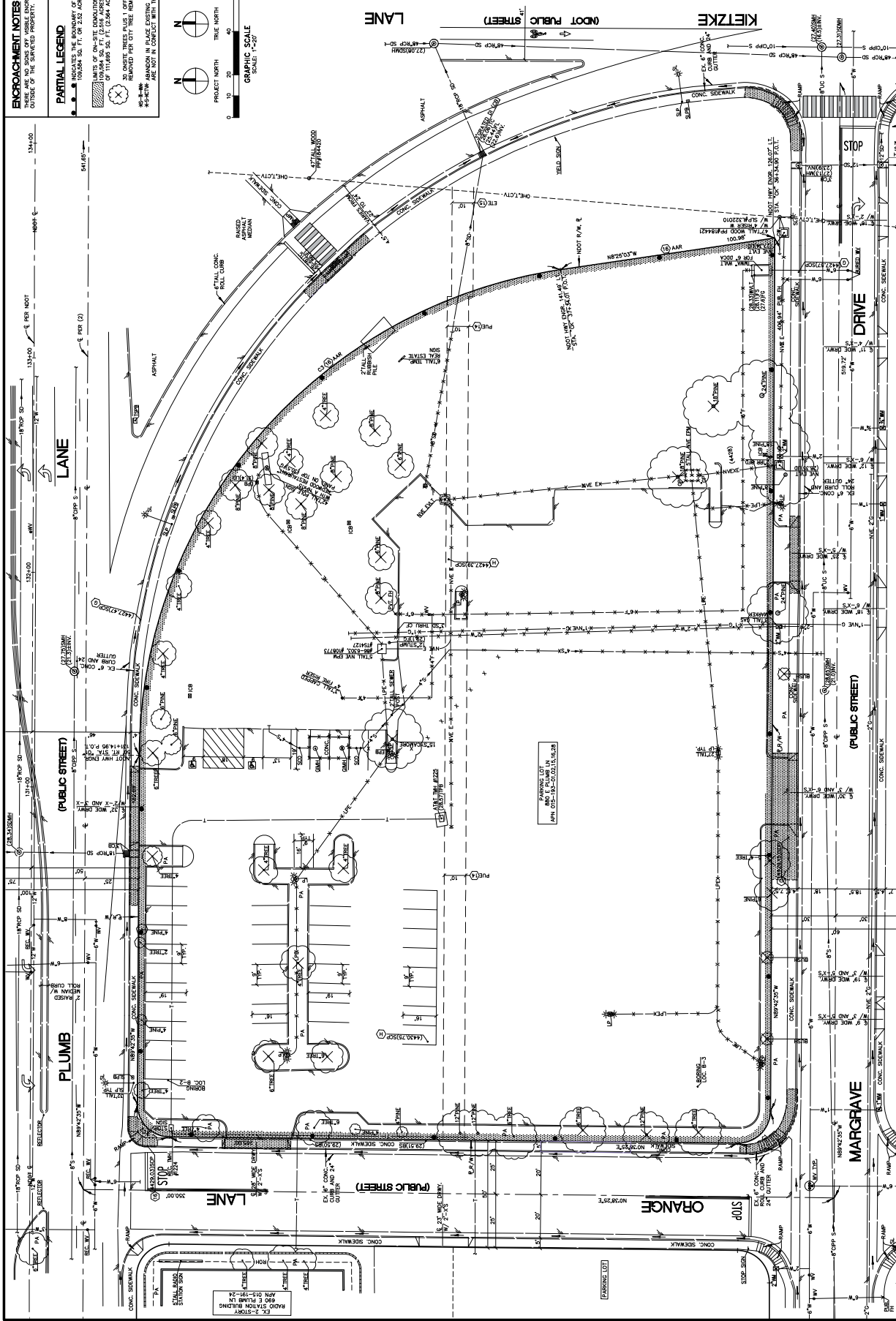
ENCROACHMENT NOTES
THERE ARE NO SIGNS OFF VISIBLE ENCROACHMENT OF SITE IMPROVEMENTS EITHER IN TO OR OUTSIDE OF THE SURVEYED PROPERTY.

PARTIAL LEGEND

- INDICATES THE BOUNDARY OF THIS TOPOGRAPHY SURVEY MAP CONSISTING OF 100,000 SQ. FT. OR 2.32 ACRES.
- LIMITS OF ON-SITE DEMOLITION FOR NEW SITE IMPROVEMENTS CONSISTING OF 100,000 SQ. FT. OR 2.32 ACRES, PLUS 2,111 SQ. FT. (0.048 ACRES) WITH A TOTAL OF 111,111 SQ. FT. (2.544 ACRES).
- EXISTING DRIVE PAVES - EXISTING DRIVE PAVES, MOST ARE LANE TO BE DEMOLISHED PER CITY THE REMAINING PAVEMENT FOR A TOTAL OF 31 FEET, ARE NOT IN CONTACT WITH THE NEW SITE IMPROVEMENTS OR REMOVAL, SHOWN ON THIS SHEET.



CURVE DATA TABLE			
NO.	DELTA	RADIUS	LENGTH
01	90°23'07"	15.00'	23.85'
02	90°23'07"	15.00'	23.85'
03	81°17'23"	230.00'	238.33'



SHEETS
4 OF 15

C32

**CITY ENTITLEMENT
DEMOLITION PLAN**

IN-N-OUT BURGER
880 E. PLUMB LANE
RENO, NV 89502



MSI ENGINEERING, INC.
CIVIL ENGINEER
3000 S. VULCAN AVE. SUITE 200
RENO, NV 89502
PHONE: 775-784-1111 FAX: 775-784-1112
DATE: 01-24-2023



REVISIONS



DEVELOPER:
IN-N-OUT BURGER
880 E. PLUMB LANE
BALDWIN PARK, CA 91706
CONTACT: PETER KULMATTCH
PHONE: 626 815-3378

