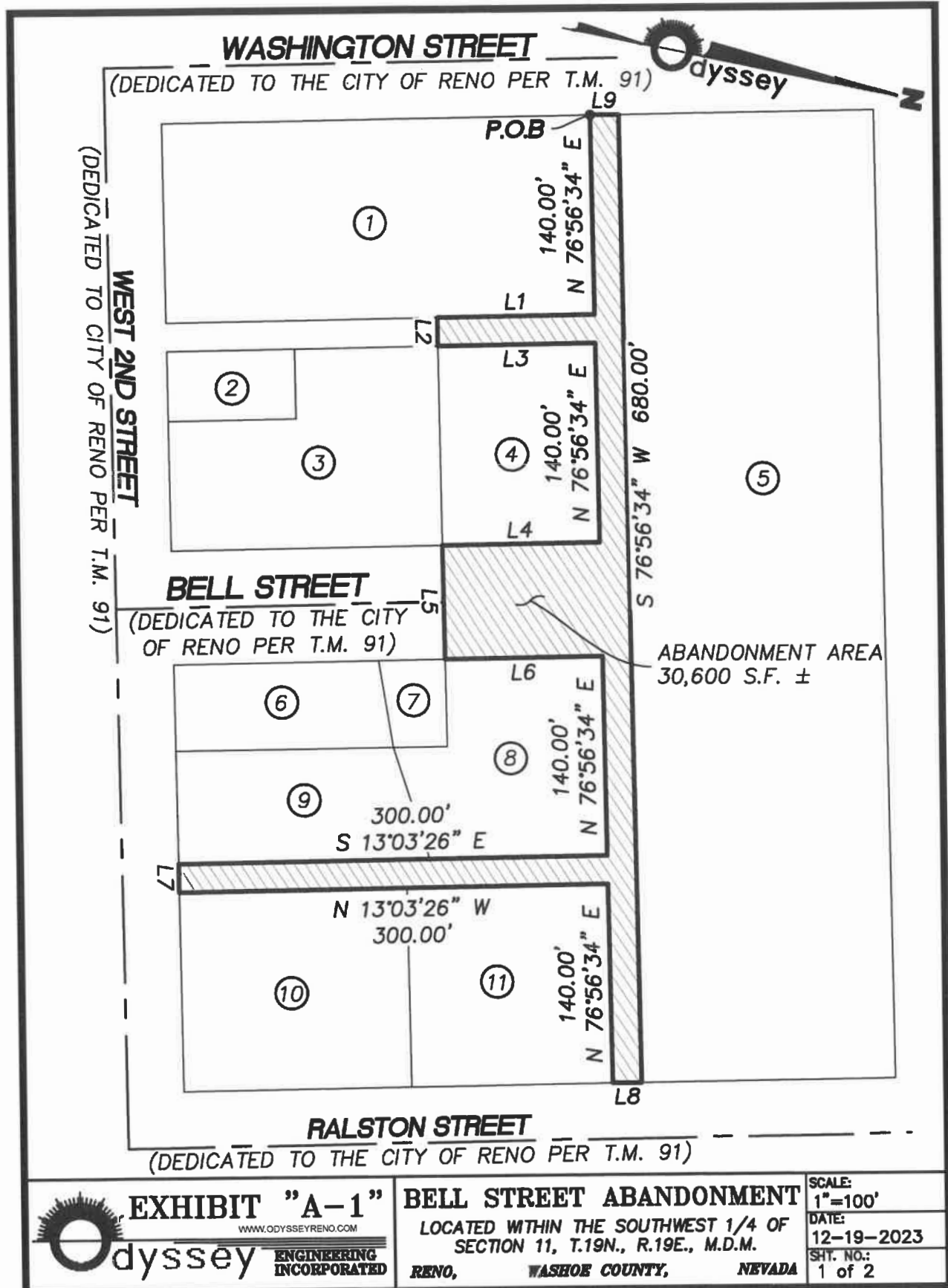


Exhibit B. Abandonment Area



PARCEL LINE TABLE		
LINE #	DIRECTION	LENGTH
L1	S 13°03'26" E	110.00'
L2	N 76°56'34" E	20.00'
L3	N 13°03'26" W	110.00'
L4	S 13°03'26" E	110.00'
L5	N 76°56'34" E	80.00'
L6	N 13°03'26" W	110.00'
L7	N 76°56'34" E	20.00'
L8	N 13°03'26" W	20.00'
L9	S 13°03'26" E	20.00'

OWNER'S TABLE			
#	A.P.N.	DEED DOCUMENT #	OWNER
①	011-017-12	1560821	WASHOE COUNTY SCHOOL DISTRICT BOARD
②	011-017-04	4608705	MEAD FAMILY TRUST
③	011-017-03	2648417	NEVADA EQUITY VENTURES, LLC.
④	011-017-11	5264307	RENO REAL ESTATE DEVELOPMENT, LLC.
⑤	011-640-09	5232551	OW COMMERCIAL ROW, LLC.
⑥	011-021-04	3698562	CHARWILL, LLC.
⑦	011-021-05	3542616	BETHEL HOUSING DEVEL CORP. INC.
⑧	011-021-09	5242997	WILSHIRE FINANCE PARTNERS, INC.
⑨	011-021-03	3699030	CHARWILL, LLC.
⑩	011-021-02	5323124	RENO PROPERTY MANAGER, LLC.
⑪	011-021-01	5085479	RENO PROPERTY MANAGER, LLC.



EXHIBIT "A-1"

WWW.ODYSEYRENO.COM

odyssey **ENGINEERING INCORPORATED**

BELL STREET ABANDONMENT

LOCATED WITHIN THE SOUTHWEST 1/4 OF
SECTION 11, T.19N., R.19E., M.D.M.

RENO,

WASHOE COUNTY,

NEVADA

SCALE:

N/A

DATE:

12-19-2023

SHT. NO.:

2 of 2