

STAFF REPORT

Date: October 23, 2024

To: Mayor and City Council

Through: Jackie Bryant, Interim City Manager

Subject: Staff Report (For Possible Action): Approval of Consultant Agreement with Lumos & Associates, Inc. for design services for the Maestro Drive and Summit Ridge Sewer Capacity Project in an amount not to exceed \$188,270. (Sewer Fund)

From: Jonathan Smith, Senior Civil Engineer

Department: Public Works

Summary:

The sewer mains at Maestro Drive and Summit Ridge have been identified as high-priority areas due to significant capacity issues. The scope of work involves relocating and upsizing approximately 2,200 linear feet of sewer main, which will significantly enhance the overall performance and reliability of the sewer system. This work is identified in the FY25 Capital Improvement Plan. Under this consultant agreement, Lumos & Associates will undertake various tasks including engineering design, developing improvement plans, permitting, specifications, geotechnical investigations, survey, and bidding documents. Staff recommends that Council approve the consultant agreement with Lumos & Associates, Inc. to provide engineering design services for the Maestro Drive and Summit Ridge Sewer Capacity Project in an amount not to exceed \$188,270.

Consent Review	Yes	No
1. Is this item an annual or standard item that comes before Council for regular approval?		X
2. Is this item an agreement required based on an item previously approved by Council?		X
3. Is this item included in the current budget approved and adopted by Council?	X	
Other Considerations		
What percent of the total City budget does this item represent?	0.021%	

Alignment with Strategic Plan:

Infrastructure, Climate Change, and Environmental Sustainability

Previous Council Action:

There is no recent Council action relevant to this item.

Background:

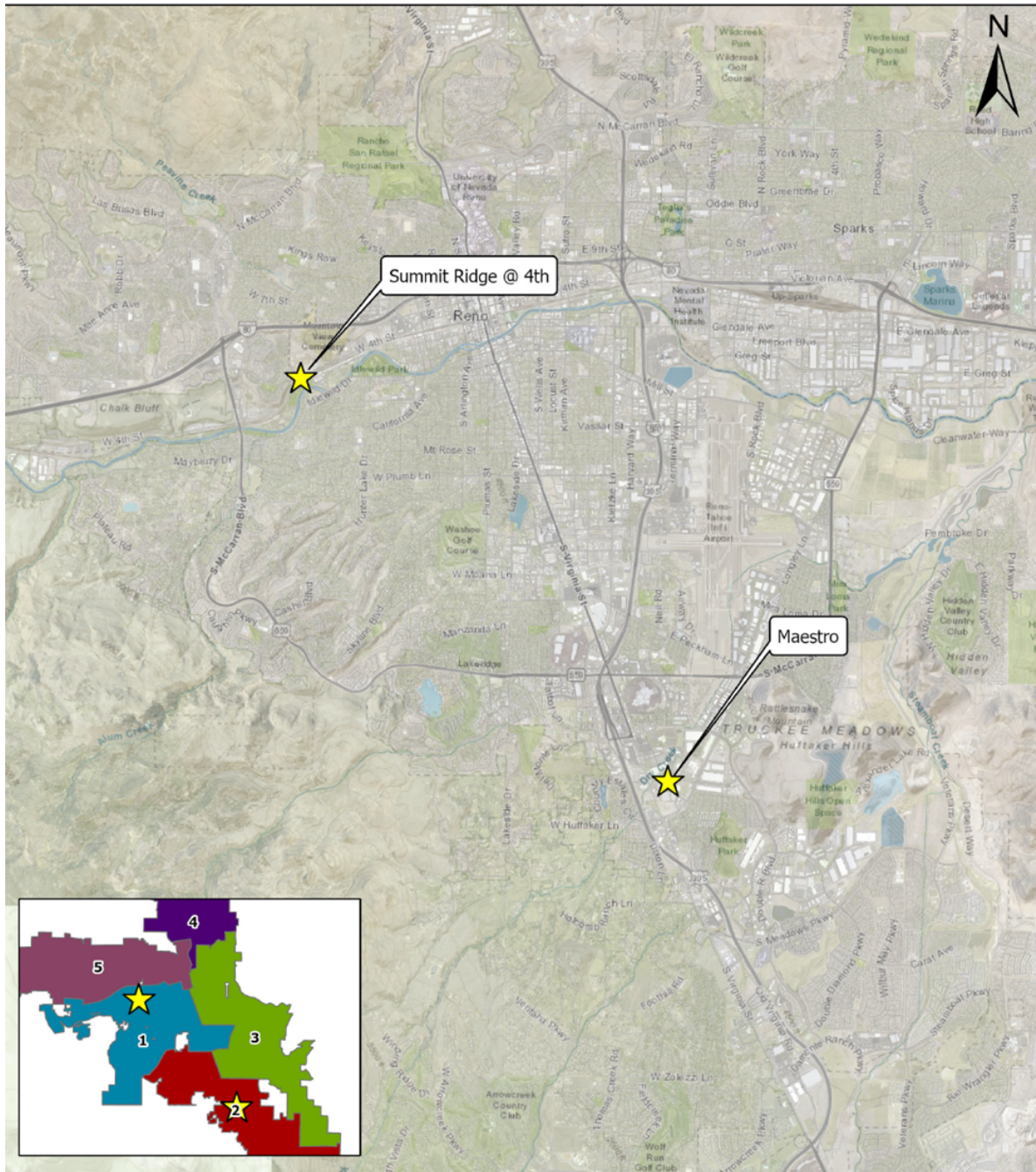
Nevada Revised Statutes (NRS) 332.115 outlines that professional services are an exception to the requirement for competitive solicitation; therefore, the City of Reno, Public Works Department has established a selection process based on competence and qualifications. Lumos & Associates, Inc. was selected from the City's pre-qualified list of consultants from the 2024/2026 Sanitary Sewer Collection System Design ranked list.

Discussion:

The sewer lines identified on Summit Ridge Drive and Maestro Drive are undersized. These lines have been evaluated and found insufficient to accommodate both present and anticipated flows and will need to be upsized to meet future capacity needs. The sewer main at Summit Ridge Drive involves the removal and disposal of approximately 700 feet of the existing 8-inch diameter sewer pipe, followed by the installation of a 12-inch diameter SDR-35 PVC sanitary sewer pipe to accommodate future capacity needs. These improvements will take place at Summit Ridge Drive near 4th Street.

Additionally, the project will repair, upsize, and realign about 1,500 linear feet of sanitary sewer pipe in the Maestro Drive area, specifically between Virginia Street and Sierra Center Parkway. There is an undersized section sewer main in Maestro Drive that will be upsized from 10-inch diameter to 12-inch sewer. This section of sewer is also challenging to maintain due to the location within the Dry Creek drainage area in south Reno. This project will relocate the upsized sewer section outside of Dry Creek to make it easier for future maintenance. The locations are shown in the vicinity map below.

Vicinity Map



This consultant agreement will provide preliminary and final design, construction documents, bidding assistance, geotechnical investigations, field investigations, and surveying services to produce construction documents for soliciting bids to make substantial improvements to the existing sanitary sewer system.

Financial Implications:

This project is in the FY25 Capital Improvement Plan and funding is available in the Sewer Fund.

Legal Implications:

The parties are bound by the terms of the agreement as prepared by the Office of the City Attorney.

Recommendation:

Staff recommends Council approve the consultant agreement with Lumos & Associates, Inc. for design services for the Maestro Drive and Summit Ridge Sewer Capacity Project in an amount not to exceed \$188,270 and authorize the Mayor to sign.

Proposed Motion:

I move to approve the consultant agreement with Lumos & Associates, Inc. for design services for the Maestro Drive and Summit Ridge Sewer Capacity Project in an amount not to exceed \$188,270 and authorize the Mayor to sign the contract.

Attachments:

Lumos and Associates Construction Services Agreement (PDF)