

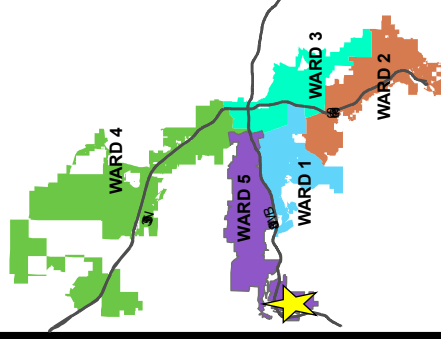
# AREA MAP

DOCS

(Santerra Quilici Properties  
Condition Amendment)



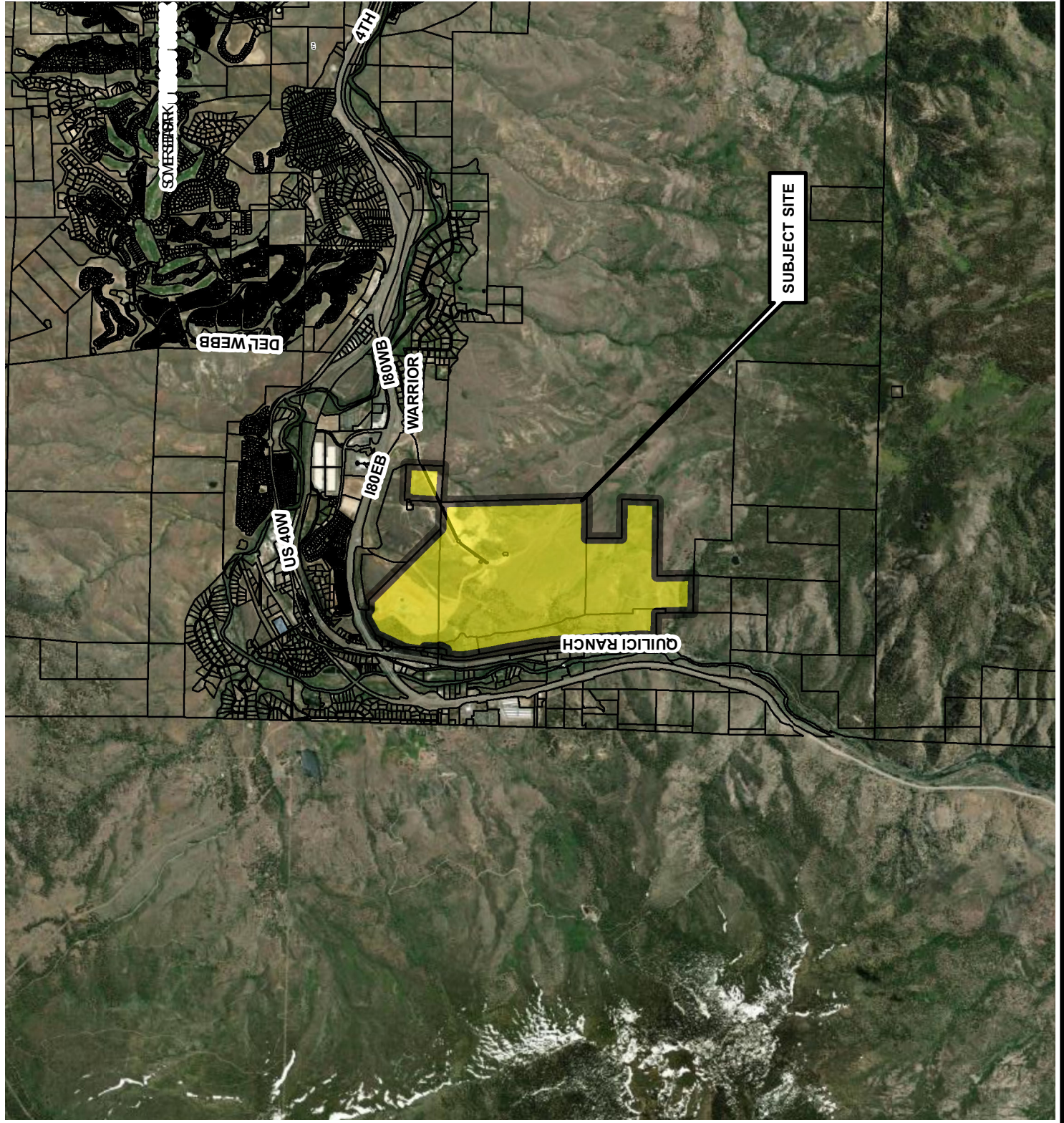
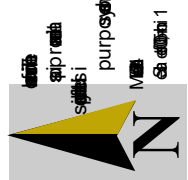
Subject



WARD



Deputy  
City Manager  
Deputy  
City Manager

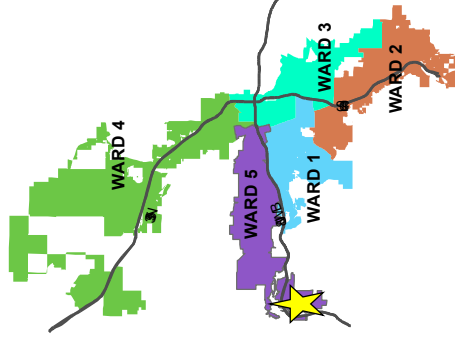




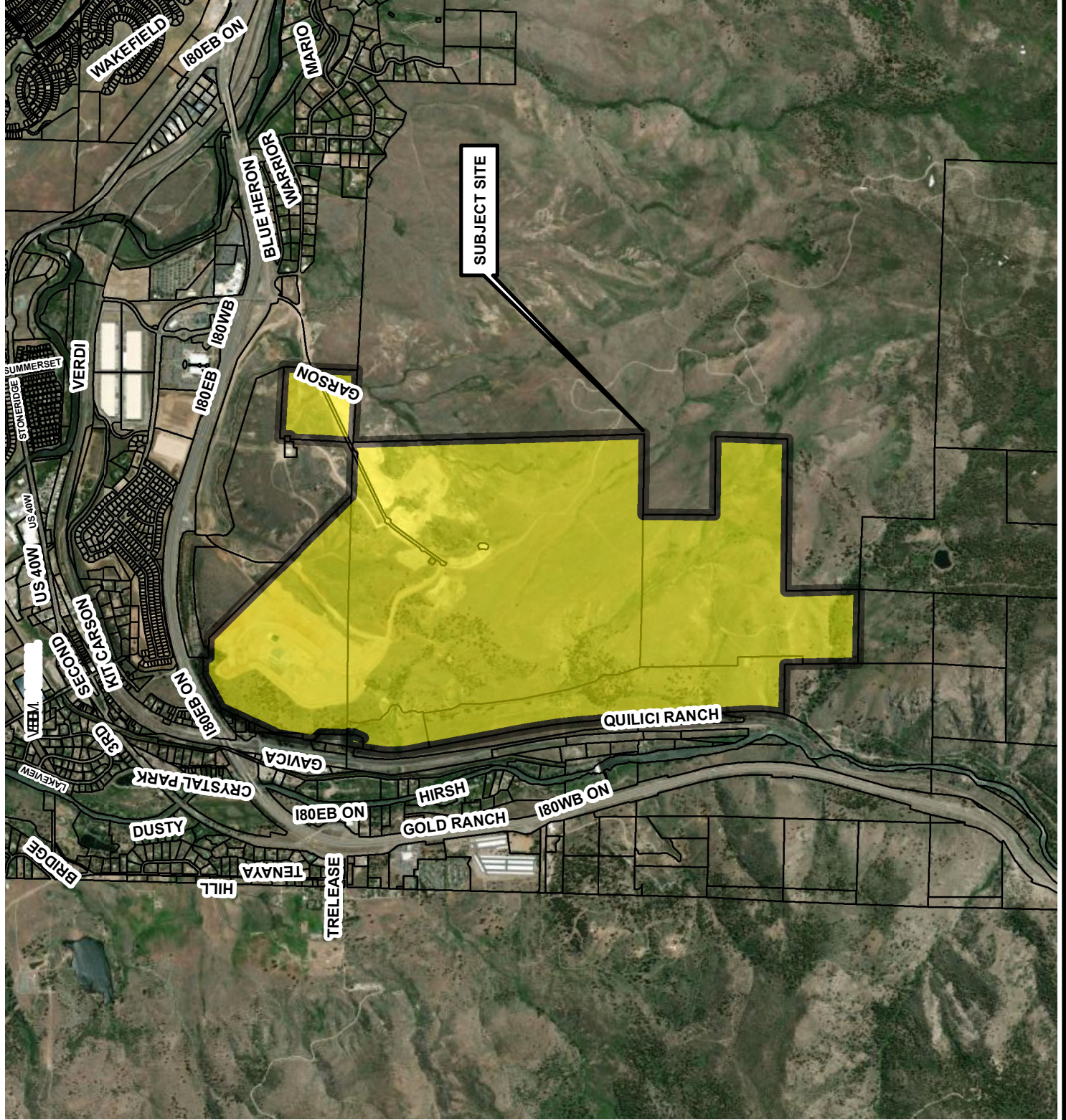
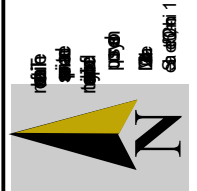
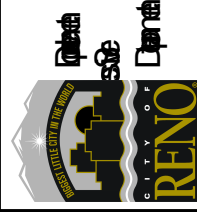
# VICINITY MAP



(Santerra Quilici Properties  
Condition Amendment)



WARD





# ZONING MAP

LDC24-00045

(Santerra Quilici Properties  
Condition Amendment)

ZONING = Multiple

Subject Site ► 

## Zoning Designations

AC	MS
PUD	NC
HC	GC
SF-3	I
SF-6	IC
SF-8	PGOS
SF-9	PF
MF-14	UT-5
LLR-0.5	UT-40
LLR-1	SPD

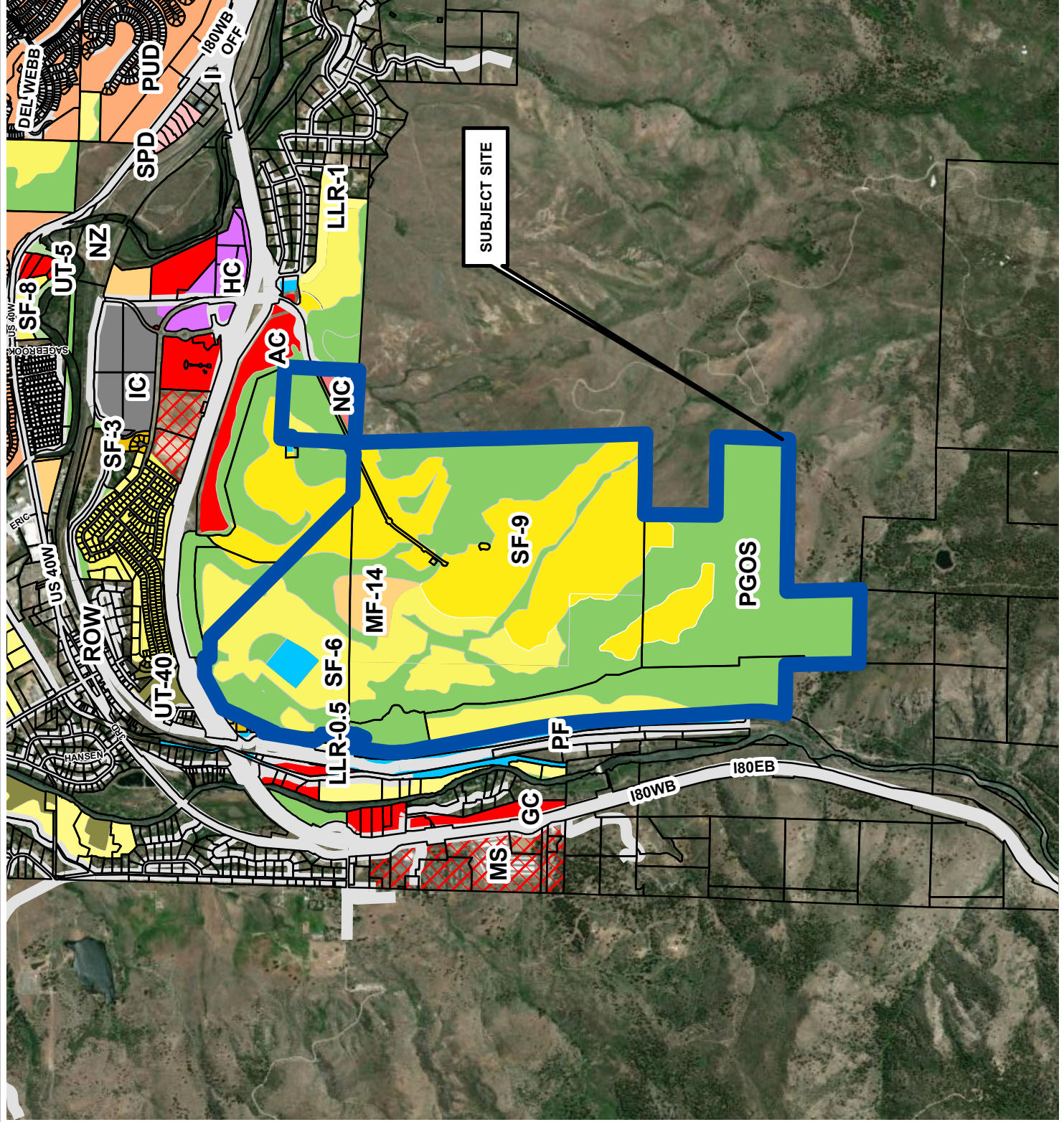


Development  
Services  
Department



The information herein  
is approximate and  
is intended for display  
purposes only.

DATE: March 2024  
SCALE: 1 inch = 2,500 feet

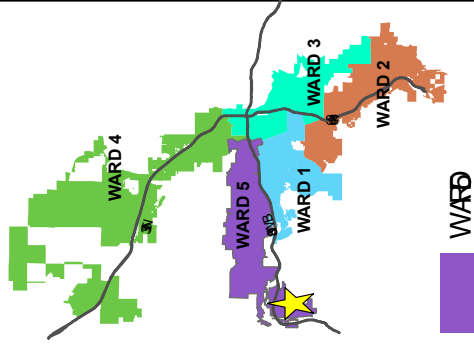




# MASTER PLAN MAP

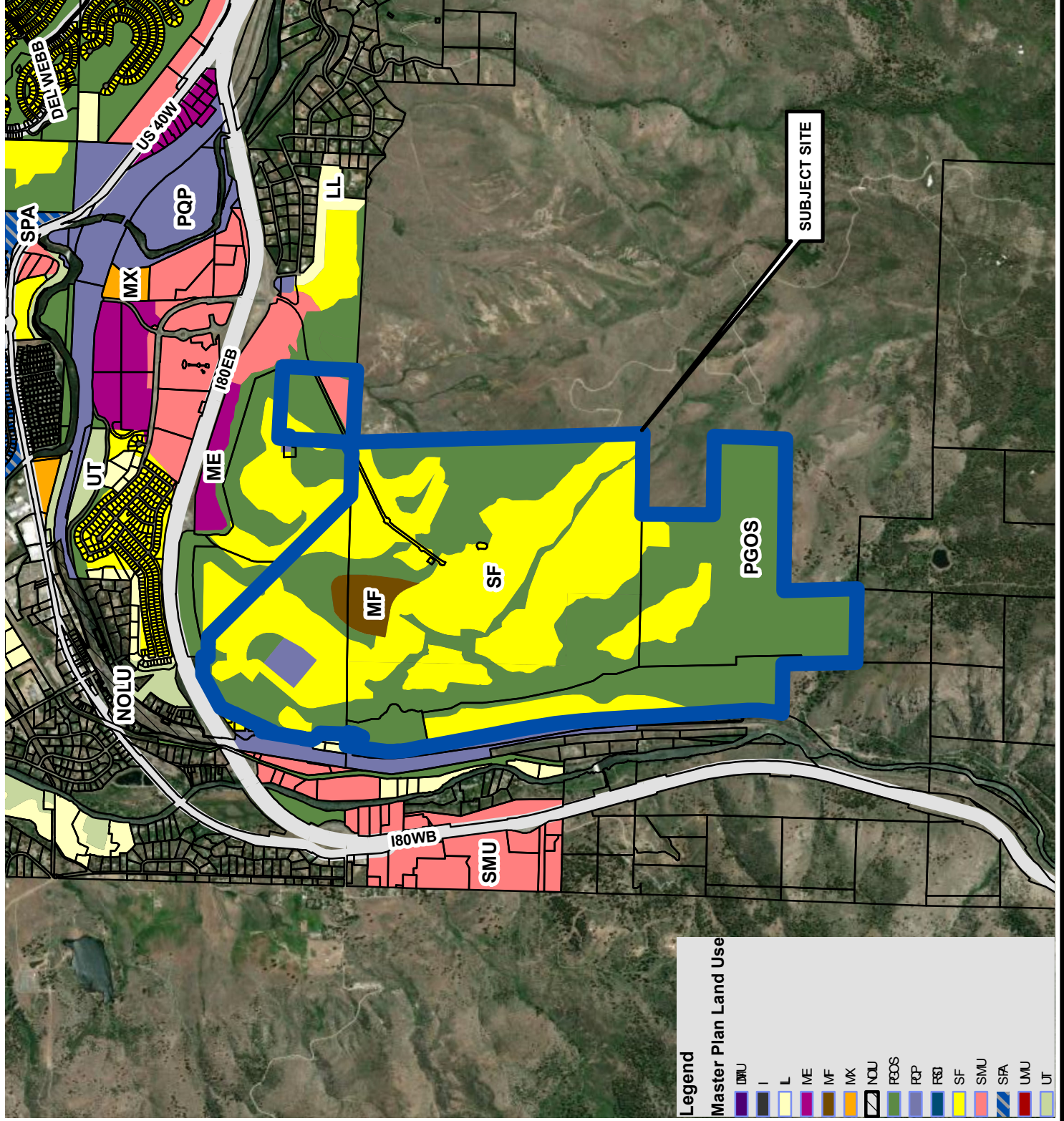
LDC24-00045

State Properties  
(Condition Amendment)



This information is approximate and is intended for display purposes only.

Date: 6/1/24  
Scale: 1 inch = 1 mile



Legend  
Master Plan Land Use

- DMU
- L
- ME
- MF
- MX
- NLU
- PGOS
- PGP
- SF
- SMU
- SPA
- UMU
- UT