

AREA SUMMARY:

TOTAL AREA	= 41.07 ACRES±
6 COMMON AREAS	= 16.39 ACRES±
RIGHT-OF-WAY AREA	= 4.92 ACRES±
PARCEL A	= 6.99 ACRES±
LOT AREA	= 13.17 ACRES±
TOTAL NO. OF LOTS	= 179

5'

20' P.U.E.

10' PRIVATE D.E. & PEDESTRIAN EASEMENT

PRIVATE STREET

TYPICAL LOT EASEMENT DETAIL
NOT TO SCALE

EASEMENTS:

1. 10' P.U.E. PER P.M. 514, REINQUISHED HEREON
2. THE DEDICATED STREETS HERON. SEE NOTE 22.
3. 10' P.U.E. PER P.M. 3251, REINQUISHED HEREON
4. 7.5' P.U.E. PER P.M. 3251, REINQUISHED HEREON
5. 7.5' P.U.E. PER P.M. 3251, REINQUISHED HEREON
6. 12.9' P.U.E. PER DOCUMENT NO. 3448972, REINQUISHED HEREON
7. 20' SANITARY SEWER EASEMENT PER DOCUMENT NO. 126863-38 & 126863-39 TO BE REINQUISHED UPON RELOCATION OF SEWER AND 126863-40
8. 20' SANITARY SEWER EASEMENT PER DOCUMENT NO. 3268181, REINQUISHED HEREON
9. 84' PUBLIC ACCESS EASEMENT PER DOCUMENT NO. 3445870
10. 20' PUBLIC ACCESS EASEMENT PER DOCUMENT NO. 4437.

LEGEND:

- [illegible]

DETAIL A
SCALE 1"=10'

- REFERENCES:**
1. PARCEL MAP NO. 284, FILE NO. 5146039, JULY 15, 1976
2. PARCEL MAP NO. 3251, FILE NO. 5137932, DECEMBER 8, 1977
3. PARCEL MAP NO. 3251, FILE NO. 5137932, DECEMBER 23, 1977
4. RECORD OF SURVEY MAP NO. 5032, FILE NO. 3632984, 2000
5. RECORD OF SURVEY MAP NO. 5032, FILE NO. 3632984, 2000
6. RECORD OF SURVEY MAP NO. 5104, FILE NO. 3635650, 2000
7. RECORD OF SURVEY MAP NO. 5146, FILE NO. 3745314, APRIL 6, 2009
8. DOCUMENT NO. 4221573, APRIL 2, 2015
- ALL OF THE ABOVE IN THE OFFICIAL RECORDS OF WASHOE COUNTY, NEVADA
9. NEVADA DEPARTMENT OF TRANSPORTATION PLANS PROJECT NO. DP-85B-2(4), EA 70982, DATED JANUARY 1980

3. NEVADA DEPARTMENT OF TRANSPORTATION PLANS PROJECT NO. DP-395-2(4). EA 70992. DATED JANUARY 1980.

5261B

Subdivision Tract Map 5261B

4808909

OFFICIAL PLAT
OF
STEAD 40
A COMMON INTEREST COMMUNITY
A MERGER AND RESUBDIVISION OF PARCELS 3, 4, 5, 6, 7, 8, 9, 10, 11, 12, 13, 14, 15, 16, 17, 18, 19, 20, 21, 22, 23, 24, 25, 26, 27, 28, 29, 30, 31, 32, 33, 34, 35, 36, 37, 38, 39, 40, 41, 42, 43, 44, 45, 46, 47, 48, 49, 50, 51, 52, 53, 54, 55, 56, 57, 58, 59, 60, 61, 62, 63, 64, 65, 66, 67, 68, 69, 70, 71, 72, 73, 74, 75, 76, 77, 78, 79, 80, 81, 82, 83, 84, 85, 86, 87, 88, 89, 90, 91, 92, 93, 94, 95, 96, 97, 98, 99, 100, 101, 102, 103, 104, 105, 106, 107, 108, 109, 110, 111, 112, 113, 114, 115, 116, 117, 118, 119, 120, 121, 122, 123, 124, 125, 126, 127, 128, 129, 130, 131, 132, 133, 134, 135, 136, 137, 138, 139, 140, 141, 142, 143, 144, 145, 146, 147, 148, 149, 150, 151, 152, 153, 154, 155, 156, 157, 158, 159, 160, 161, 162, 163, 164, 165, 166, 167, 168, 169, 170, 171, 172, 173, 174, 175, 176, 177, 178, 179, 180, 181, 182, 183, 184, 185, 186, 187, 188, 189, 190, 191, 192, 193, 194, 195, 196, 197, 198, 199, 200, 201, 202, 203, 204, 205, 206, 207, 208, 209, 210, 211, 212, 213, 214, 215, 216, 217, 218, 219, 220, 221, 222, 223, 224, 225, 226, 227, 228, 229, 230, 231, 232, 233, 234, 235, 236, 237, 238, 239, 240, 241, 242, 243, 244, 245, 246, 247, 248, 249, 250, 251, 252, 253, 254, 255, 256, 257, 258, 259, 260, 261, 262, 263, 264, 265, 266, 267, 268, 269, 270, 271, 272, 273, 274, 275, 276, 277, 278, 279, 280, 281, 282, 283, 284, 285, 286, 287, 288, 289, 290, 291, 292, 293, 294, 295, 296, 297, 298, 299, 300, 301, 302, 303, 304, 305, 306, 307, 308, 309, 310, 311, 312, 313, 314, 315, 316, 317, 318, 319, 320, 321, 322, 323, 324, 325, 326, 327, 328, 329, 330, 331, 332, 333, 334, 335, 336, 337, 338, 339, 340, 341, 342, 343, 344, 345, 346, 347, 348, 349, 350, 351, 352, 353, 354, 355, 356, 357, 358, 359, 360, 361, 362, 363, 364, 365, 366, 367, 368, 369, 370, 371, 372, 373, 374, 375, 376, 377, 378, 379, 380, 381, 382, 383, 384, 385, 386, 387, 388, 389, 390, 391, 392, 393, 394, 395, 396, 397, 398, 399, 400, 401, 402, 403, 404, 405, 406, 407, 408, 409, 410, 411, 412, 413, 414, 415, 416, 417, 418, 419, 420, 421, 422, 423, 424, 425, 426, 427, 428, 429, 430, 431, 432, 433, 434, 435, 436, 437, 438, 439, 440, 441, 442, 443, 444, 445, 446, 447, 448, 449, 450, 451, 452, 453, 454, 455, 456, 457, 458, 459, 460, 461, 462, 463, 464, 465, 466, 467, 468, 469, 470, 471, 472, 473, 474, 475, 476, 477, 478, 479, 480, 481, 482, 483, 484, 485, 486, 487, 488, 489, 490, 491, 492, 493, 494, 495, 496, 497, 498, 499, 500, 501, 502, 503, 504, 505, 506, 507, 508, 509, 510, 511, 512, 513, 514, 515, 516, 517, 518, 519, 520, 521, 522, 523, 524, 525, 526, 527, 528, 529, 530, 531, 532, 533, 534, 535, 536, 537, 538, 539, 540, 541, 542, 543, 544, 545, 546, 547, 548, 549, 550, 551, 552, 553, 554, 555, 556, 557, 558, 559, 560, 561, 562, 563, 564, 565, 566, 567, 568, 569, 570, 571, 572, 573, 574, 575, 576, 577, 578, 579, 580, 581, 582, 583, 584, 585, 586, 587, 588, 589, 590, 591, 592, 593, 594, 595, 596, 597, 598, 599, 600, 601, 602, 603, 604, 605, 606, 607, 608, 609, 610, 611, 612, 613, 614, 615, 616, 617, 618, 619, 620, 621, 622, 623, 624, 625, 626, 627, 628, 629, 630, 631, 632, 633, 634, 635, 636, 637, 638, 639, 640, 641, 642, 643, 644, 645, 646, 647, 648, 649, 650, 651, 652, 653, 654, 655, 656, 657, 658, 659, 660, 661, 662, 663, 664, 665, 666, 667, 668, 669, 670, 671, 672, 673, 674, 675, 676, 677, 678, 679, 680, 681, 682, 683, 684, 685, 686, 687, 688, 689, 690, 691, 692, 693, 694, 695, 696, 697, 698, 699, 700, 701, 702, 703, 704, 705, 706, 707, 708, 709, 710, 711, 712, 713, 714, 715, 716, 717, 718, 719, 720, 721, 722, 723, 724, 725, 726, 727, 728, 729, 730, 731, 732, 733, 734, 735, 736, 737, 738, 739, 740, 741, 742, 743, 744, 745, 746, 747, 748, 749, 750, 751, 752, 753, 754, 755, 756, 757, 758, 759, 760, 761, 762, 763, 764, 765, 766, 767, 768, 769, 770, 771, 772, 773, 774, 775, 776, 777, 778, 779, 780, 781, 782, 783, 784, 785, 786, 787, 788, 789, 790, 791, 792, 793, 794, 795, 796, 797, 798, 799, 800, 801, 802, 803, 804, 805, 806, 807, 808, 809, 810, 811, 812, 813, 814, 815, 816, 817, 818, 819, 820, 821, 822, 823, 824, 825, 826, 827, 828, 829, 830, 831, 832, 833, 8

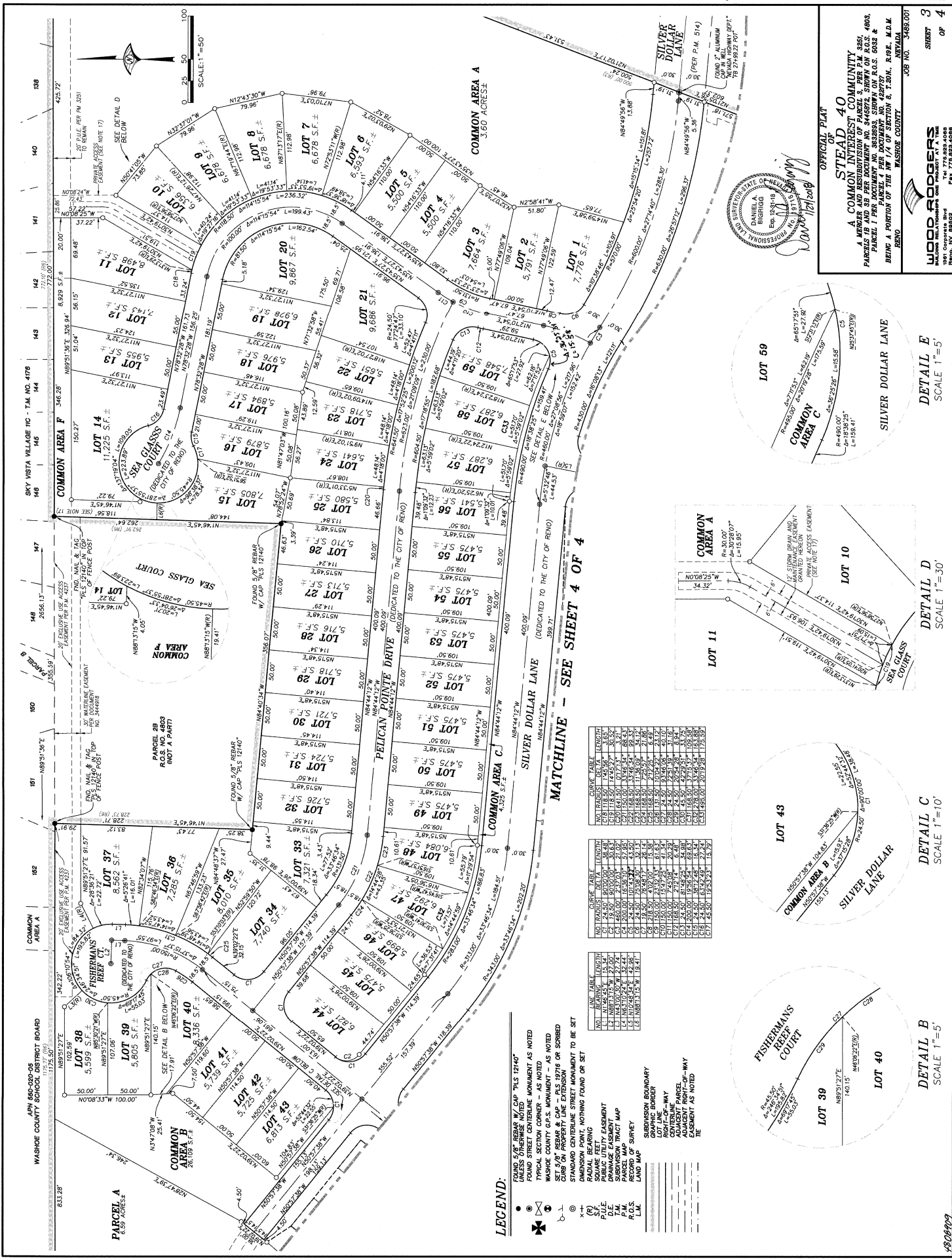
WOOD RODGERS
BUILDING RELATIONSHIPS ONE PROJECT AT A TIME

DETAIL E
SCALE 1"=5'

DETAIL D
SCALE 1"=30'

DETAIL C
SCALE 1"=10'

DETAIL B
SCALE 1"=5'



LEGEND:

- FOUND 5/8" REBAR W/ CAP "PLS 12140"
 UNLESS OTHERWISE NOTED
 MONUMENT AS NOTED
 TYPICAL SECTION CORNER - AS NOTED
 TYPICAL COUNTY G.S. MONUMENT - AS NOTED
 SET 5/8" REBAR & CAP - PL'S 18716 ON ST OR
 CURB ON PROPERTY LINE EXTENSION
 DIMENSION STREET MONUMENT TO SET
 DIMENSION POINT NOTHING FOUND ON SET
 RADIAL BEARING
 SQUARE FEET, EASEMENT
 DRAINAGE EASEMENT
 SUBDIVISION TRACT MAP
 RECORD OF SURVEY
 LAND MAP
 SUBDIVISION BOUNDARY
 GRAPHIC BOUNDARY
 RIGHT-OF-WAY
 CENTRAL LINE
 PARCEL
 ADJACENT RIGHT-OF-WAY
 EASEMENT AS NOTED
- (R)
 • (S)
 • (D)
 • (P)
 • (M)
 • (R.O.S.)
 • L.M.
 • (Cross)
 • (Circle with cross)
 • (Circle with dot)
 • (Circle with X)
 • (Circle with dot and cross)

**CUMULATIVE INDEXES
SHOULD BE EXAMINED
FOR ANY SUBSEQUENT
CHANGES TO THIS MAP**

01905

OFFICIAL PLAT
 OF
 STEAD 40
 A COMMON INTEREST COMMUNITY
 A MERGER AND REBUNDITION OF PARCEL 3, PER P.M. 3281,
 PARCELS 1B AND 3B PER DIVISION NO. 3445572, SHOW ON R.O.S. 4803,
 PARCEL 1 PER DOCUMENT NO. 3832693, STEAD 3775 ON R.O.S. 5032 &
 BEING A PORTION OF THE NW 1/4 OF SECTION 8, T.20N., R.9E., M.D.M.
 WASHOE COUNTY NEVADA
 JOB NO. 3462.001
 4
 SHEET
 4
 OF
 4
 WOOD RODGERS
 ENGINEERS & ARCHITECTS
 ONE PRINCETON AT THE
 1775, 882-4088
 1981 Corporate Blvd
 Reno, NV 89502

Subdivision Tract Map 52601C

