

Sphere of Influence Review

City Council

July 31, 2024



Alignment with Strategic Plan

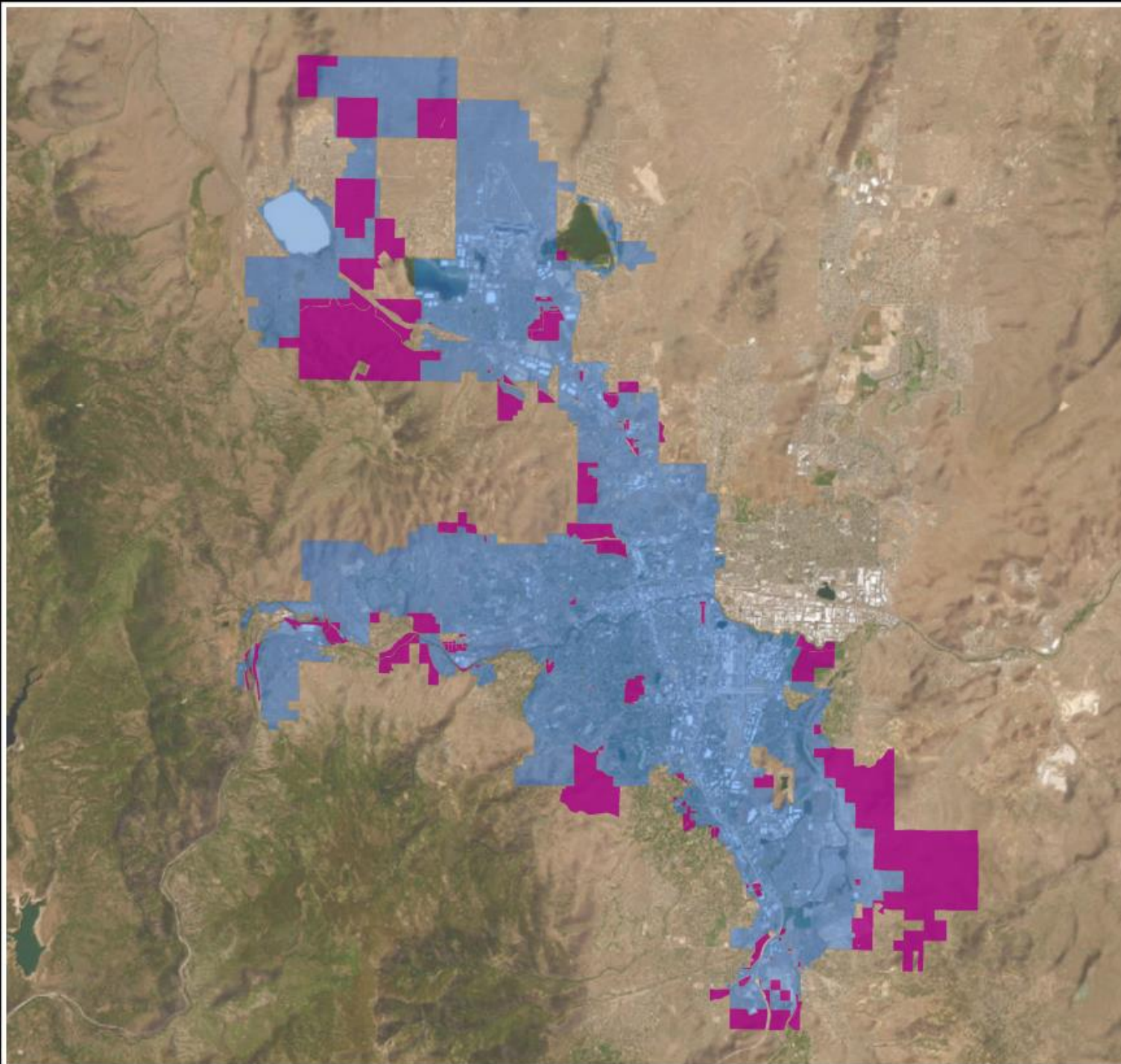


Sphere of Influence

- Defined by NRS
 - “an area into which a city plans to expand.... within the time designated in the comprehensive regional plan.”
- Component of the Truckee Meadows Regional Plan
 - Area we plan to grow into in the next 20 years



Sphere of Influence

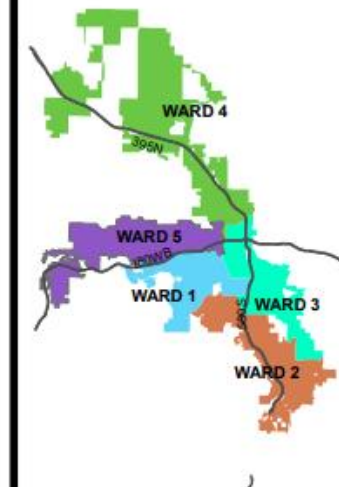
- SOI land is in Washoe County's jurisdiction
- City has established land use authority
 - Planning review
 - Building review



VICINITY MAP

Federal/Public
Lands Within
the SOI

-  Reno City Limits
-  Reno SOI



Development
Services
Department



The information heron
is approximate and
is intended for display
purposes only.

Date: July 2024

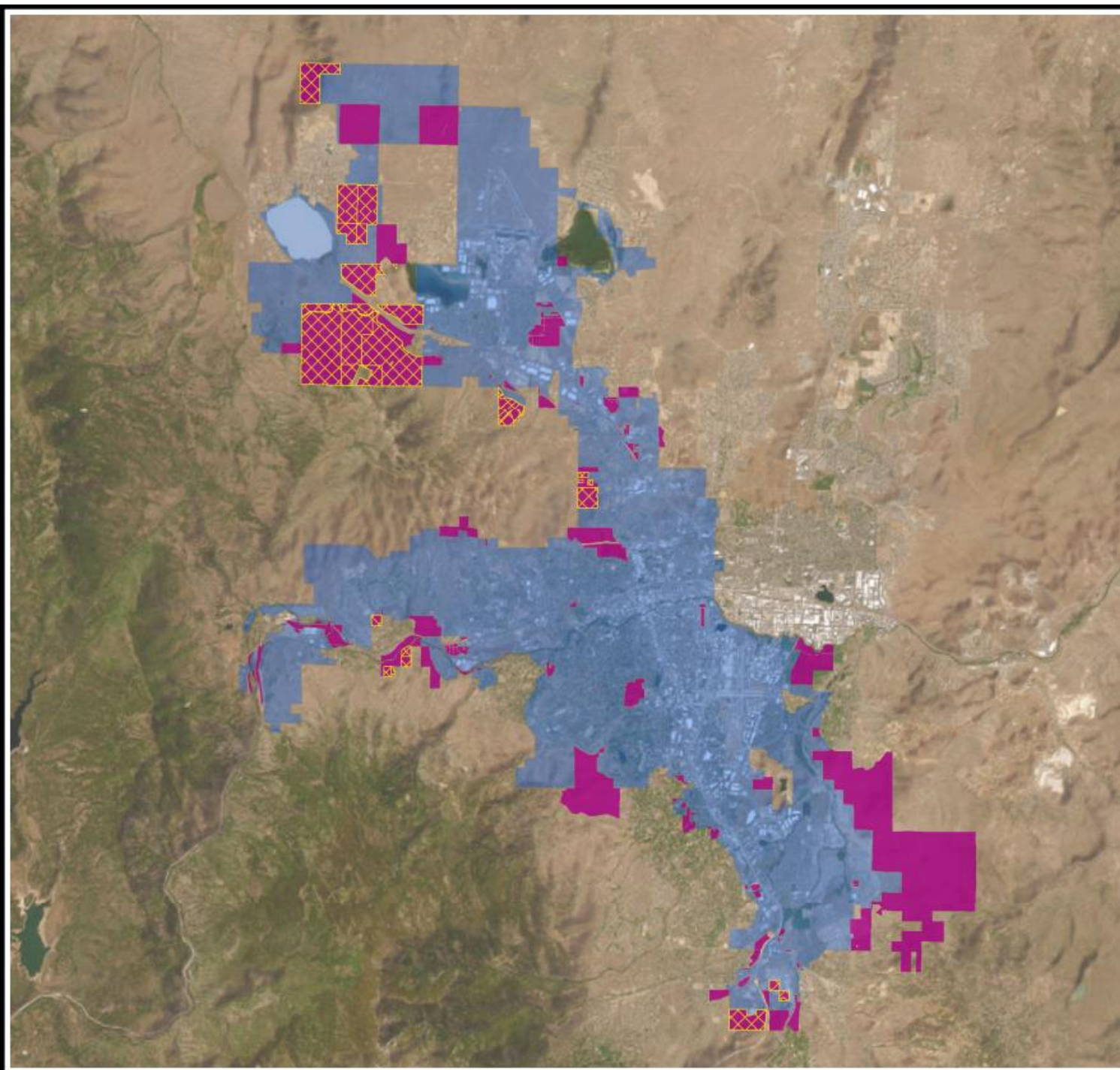
Scale: 1 inch = 18,173 feet

Sphere of Influence

- Truckee Meadows Regional Plan Update
 - SOI is a construct of the Regional Plan
 - First step in being more targeted about future growth
- Master plan policy encourages proactive review
 - Recognizes that the SOI is oversized

Review and Recommendation

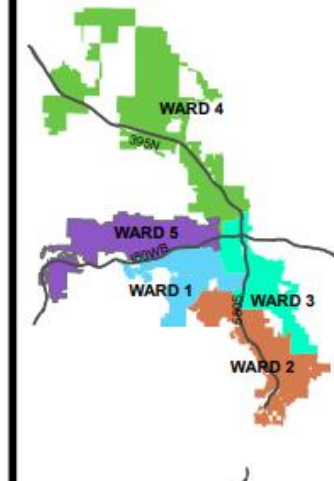
- Large amount of **federal/public lands**
 - Should be removed as we do not anticipate growth in these areas
 - Topographical constraints
- Certain areas warrant future discussion
 - Flagged areas for additional review during development of a future annexation program or more targeted growth strategy



VICINITY MAP

Federal/Public
Lands Within
the SOI

-  Federal/public parcels suggested for removal from SOI
-  Reno City Limits
-  Reno SOI



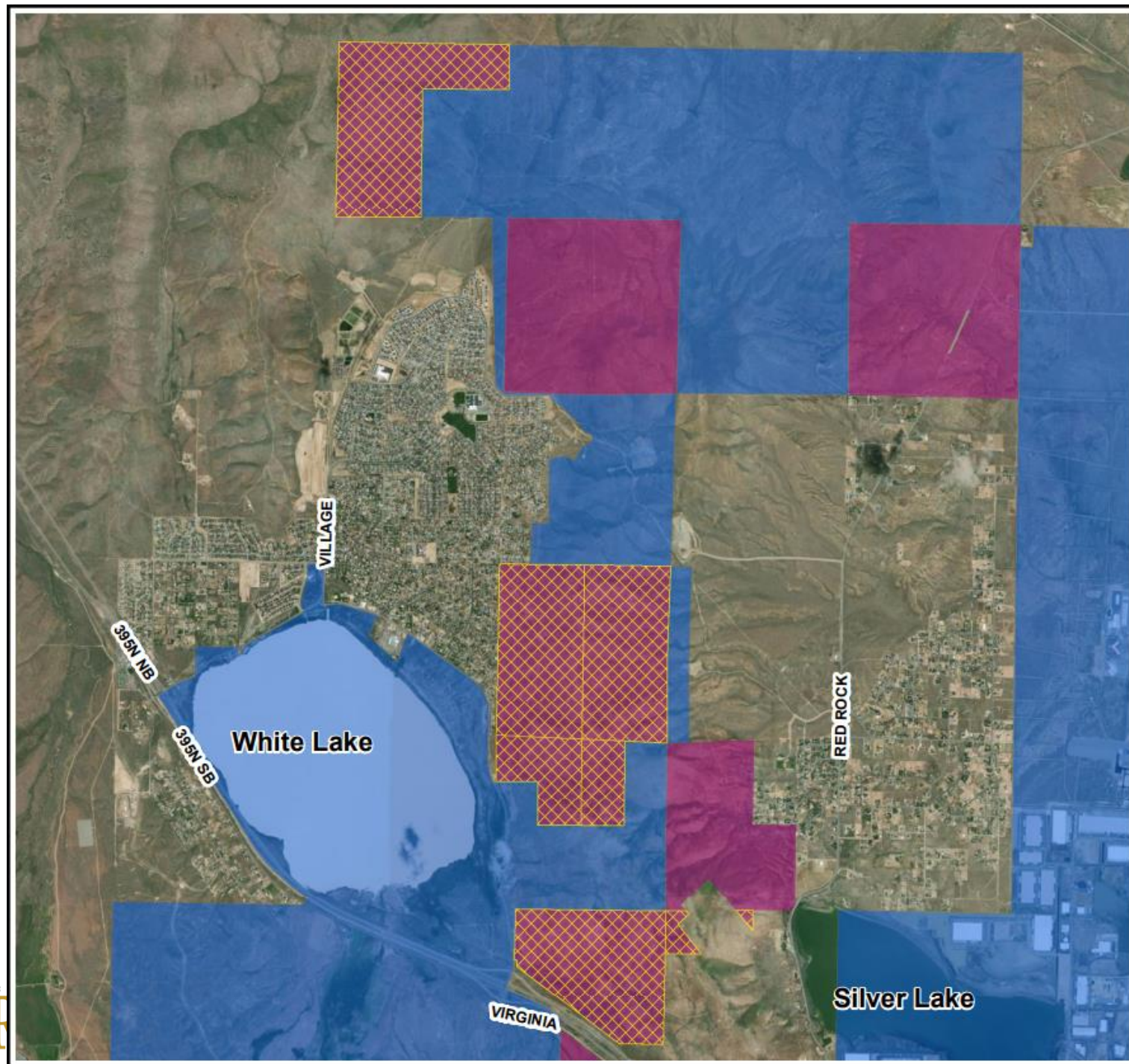
Development
Services
Department



The information heron
is approximate and
is intended for display
purposes only.




Date: July 2024

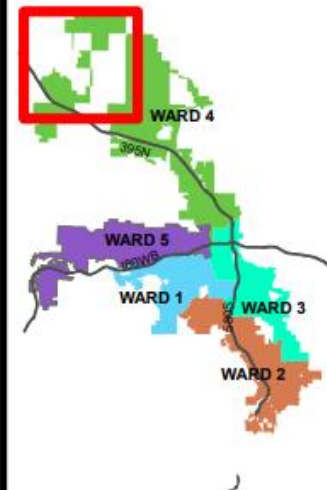
Scale: 1 inch = 18,200 feet



VICINITY MAP

Federal/Public
Lands Within
the SOI

-  Federal/public parcels suggested for removal from SOI
-  Reno City Limits
-  Reno SOI

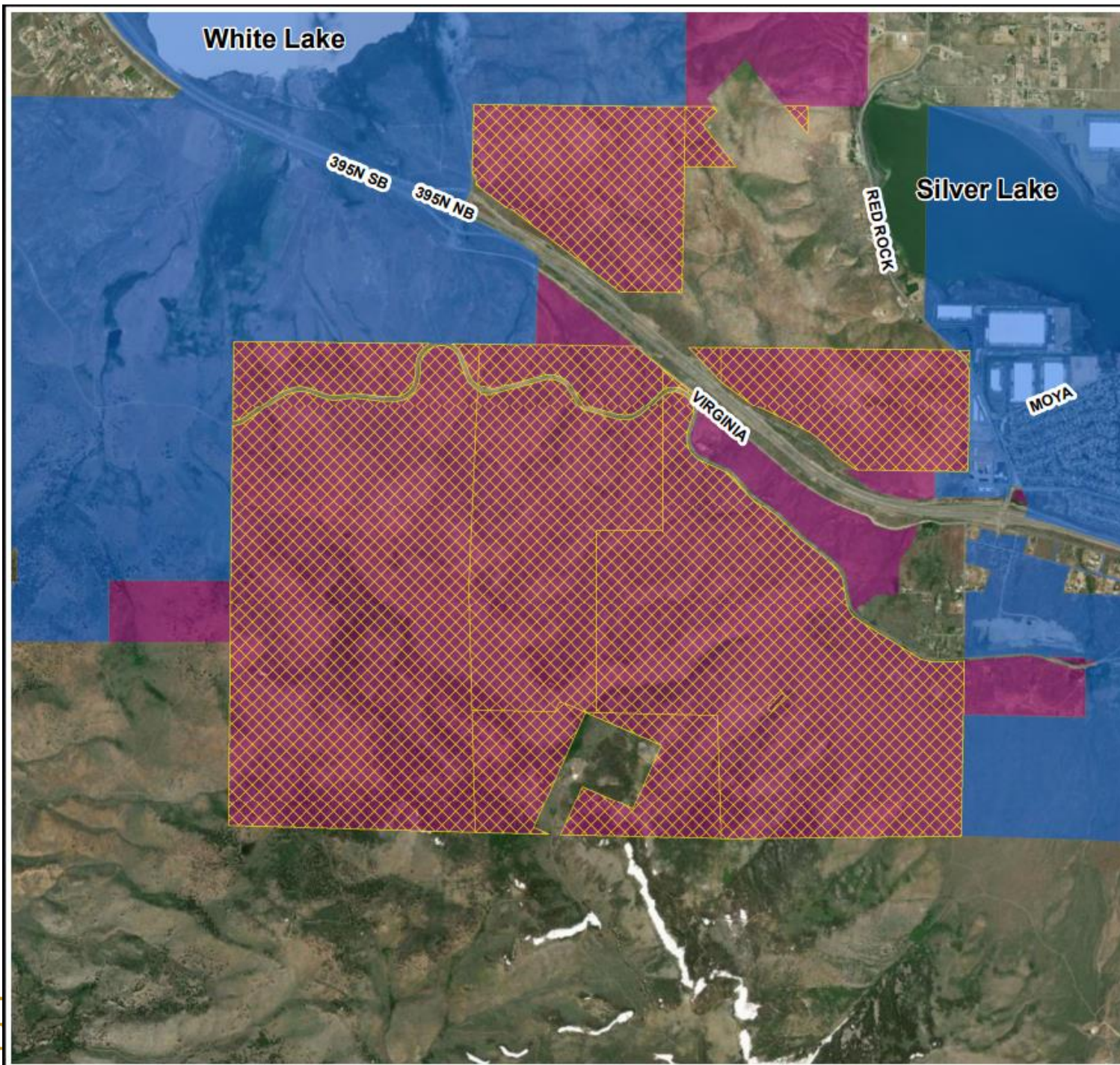


Development
Services
Department






The information heron
is approximate and
is intended for display
purposes only.

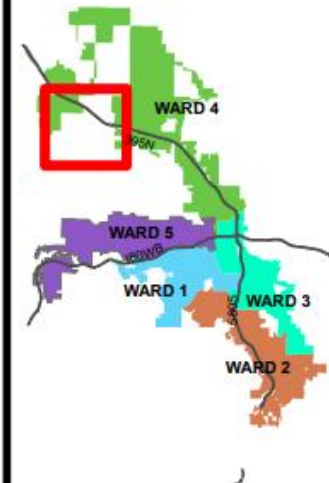
Date: July 2024
Scale: 1 inch = 4,200 feet



VICINITY MAP

Federal/Public
Lands Within
the SOI

-  Federal/public parcels suggested for removal from SOI
-  Reno City Limits
-  Reno SOI



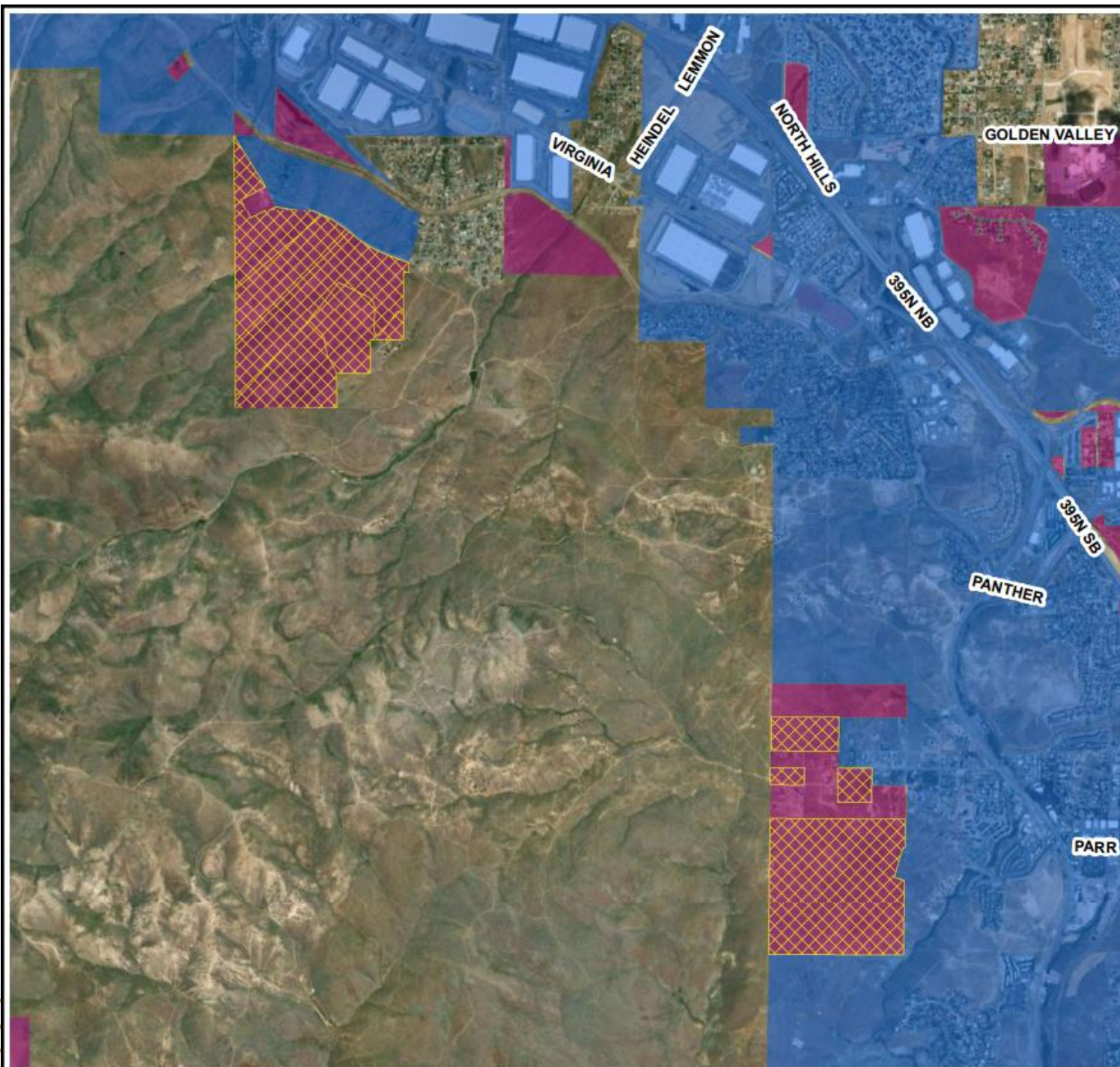
Development
Services
Department



The information heron
is approximate and
is intended for display
purposes only.

Date: July 2024

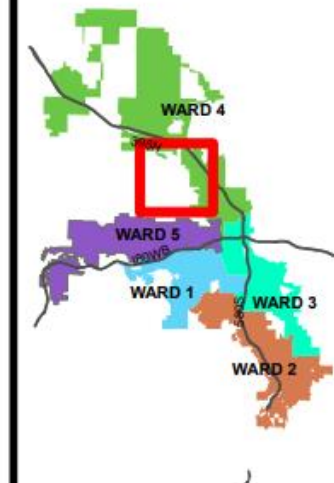
Scale: 1 inch = 3,000 feet



VICINITY MAP

Federal/Public
Lands Within
the SOI

-  Federal/public parcels suggested for removal from SOI
-  Reno City Limits
-  Reno SOI



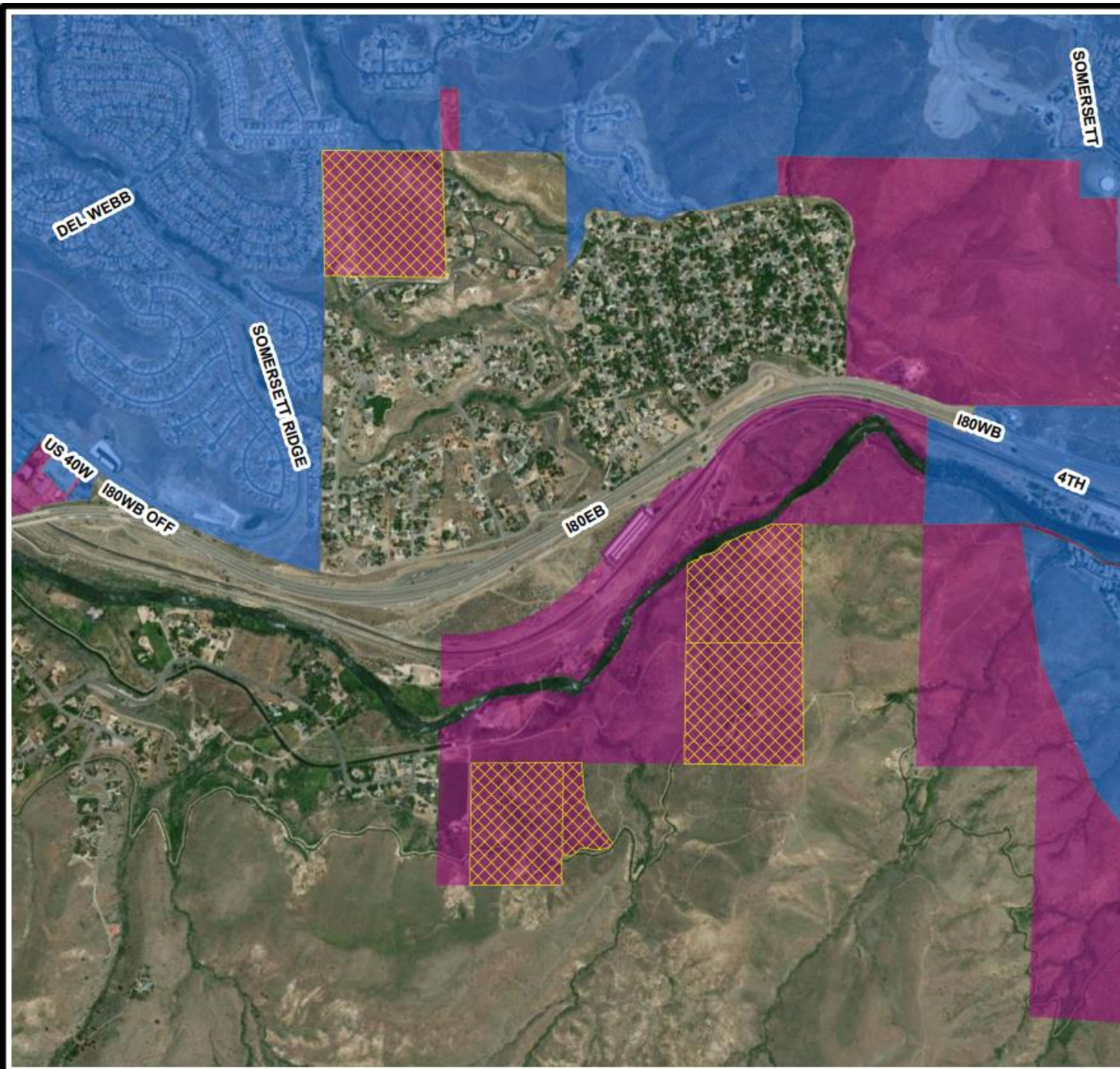
Development
Services
Department



The information heron
is approximate and
is intended for display
purposes only.

Date: July 2024

Scale: 1 inch = 2,700 feet



VICINITY MAP

Federal/Public
Lands Within
the SOI

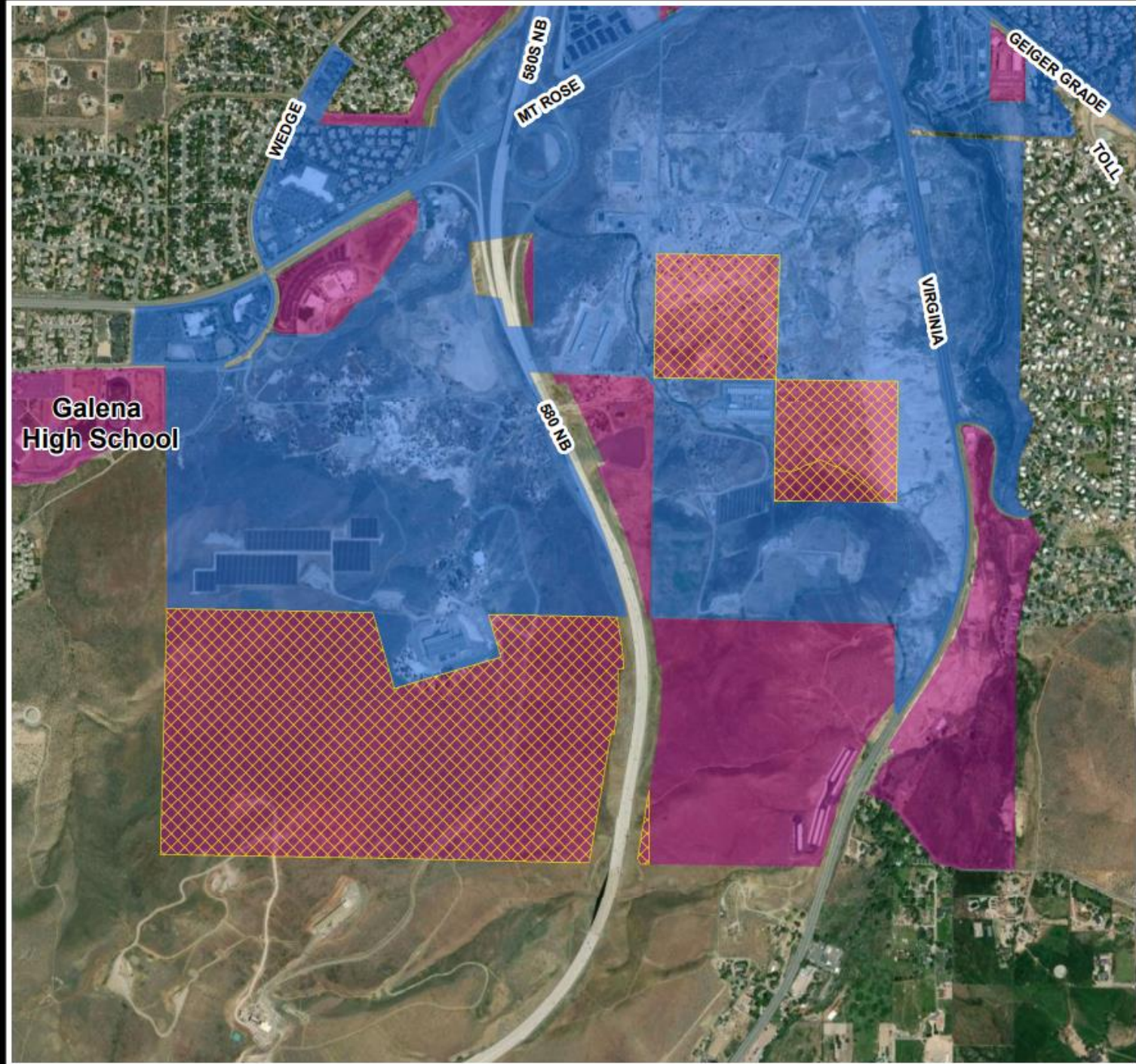
-  Federal/public parcels suggested for removal from SOI
-  Reno City Limits
-  Reno SOI



Development
Services
Department






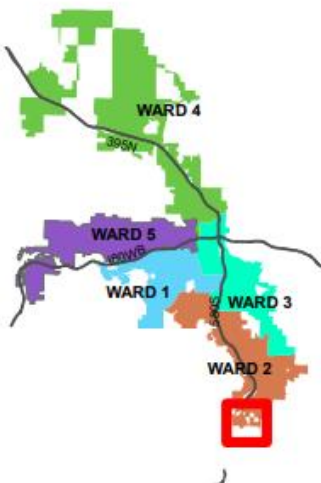
The information heron
is approximate and
is intended for display
purposes only.
Date: July 2024
Scale: 1 inch = 1,500 feet



VICINITY MAP

Federal/Public
Lands Within
the SOI

-  Federal/public parcels suggested for removal from SOI
-  Reno City Limits
-  Reno SOI



Development
Services
Department



The information heron
is approximate and
is intended for display
purposes only.
Date: July 2024
Scale: 1 inch = 1,500 feet

Process

- Communication with appropriate public entities
- Included in draft Regional Plan
 - Circulated for public review
 - 3 Regional Planning Commission hearings
 - 1 Regional Planning Governing Board meeting

Recommended Motion

I move to recommend that TMRPA approve of the removal of certain public lands from the City's Sphere of Influence, as identified in Exhibits A and B.