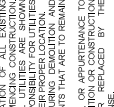


NOT FOR CONSTRUCT

OTHERWISE NOTED.
TO THE MINIMUM
RECOMMENDED IN THE
ED JULY 1, 2022.

COUNT OF PAVEMENT
DAMAGE
AT POLES

© 2023 KIMLEY-HORN AND ASSOCIATES, INC.
7900 RANCHBARRA PKWY SUITE 100, RENO
PHONE: 775-200-1960
WWW.KIMLEY-HORN.COM

ROADWAY
ENT
UCK
CRETE SIDEWALK
HALT
DSCAPE

PROPERTY LINE	PROPOSED CONCRETE SIDEWALK	PROPOSED ASPHALT	PROPOSED LANDSCAPE	EXISTING CURB	PROPOSED CURB	PROPOSED LIMITS OF DISTURBANCE	PARKING STALL COUNT	EXISTING EDGE OF PAVEMENT	ACCESSIBLE ROUTE	PROPOSED LIGHT POLES
---				==	==					

1. CONTRACTOR TO VERIFY EXISTING IMPROVEMENTS SHOWN ON PLANS.

2. ALL EXISTING UTILITIES SHOWN HEREON ARE APPROXIMATE ONLY. IT SHALL BE THE CONTRACTOR'S RESPONSIBILITY TO DETERMINE THE EXACT LOCATION OF ALL EXISTING UTILITIES PRIOR TO CONSTRUCTION. NO REPRESENTATION IS MADE THAT ALL UTILITIES ARE SHOWN HEREON. THE CONTRACTOR SHALL BE RESPONSIBLE FOR VERIFYING AND NOT SHOWING UTILITIES NOT SHOWN IN THEIR UTILITIES LOCATION.

3. CONTRACTOR TO PROTECT IN PLACE DURING DEMOLITION AND CONSTRUCTION ALL UTILITIES LOCATIONS THAT ARE TO REMAIN.

4. UTILITIES TO REMAIN ARE TO REMAIN IN PLACE AND SHALL REMAIN THAT IS DAMAGED DURING DEMOLITION OR CONSTRUCTION SHALL BE IMMEDIATELY REPAIRED OR REPLACED BY THE CONTRACTOR.

5. CONTRACTOR SHALL VERIFY AND LOCATE ALL EXISTING UNDERGROUND UTILITIES PRIOR TO CONSTRUCTION AND PROTECT IN PLACE ALL UTILITIES TO REMAIN.

6. EXISTING SITE INFORMATION SHALL BE PERMANENTLY RECORDED BY THE CONTRACTOR.

7. ALL DIMENSIONS TO FACE OF CURB UNLESS OTHERWISE NOTED.

8. SITE CONSTRUCTION SHALL CONFORM TO THE MINIMUM REQUIREMENTS OF THE 2012 INTERNATIONAL BUILDING CODE, THE 2012 INTERNATIONAL GEOTECHNICAL REPORT BY TERRACON DATED JULY 1, 2022.

BASIS OF BEARINGS AND BENCHMARK

WASHOE STATE PLANE COORDINATE SYSTEM, ZONE 48N, WASHOE COORDINATES, UNITS: THE HORIZONTAL COORDINATES SHOWN HEREON ARE IN METERS. THE VERTICAL COORDINATE ESTABLISHED COMBINED COORDINATE OF 1,000,019.573. U.S. G.A.S. STEEL CUBE IN CONCRETE, FLUSH WITH GROUND, STATIONED AT THE CENTER OF TERRACE AND ADJACENT TO THE CENTER OF THE WASHOE STATE PLANE COORDINATE SYSTEM, 48N, WASHOE CO. ELEVATION: 15,046.03 (AS SHOWN) (FEET)
1507.80 (VERTICAL)

PLANNED NORTH AMERICAN NATIONAL DATUM OF 1983 (NAD 83)

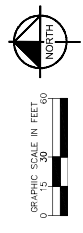
NEVADA, STATE PLANE COORDINATE SYSTEM, WEST ZONE, GRID NO. 2810. ALL COORDINATES AND DISTANCES ARE GIVEN IN METERS. TO OBTAIN GRID COORDINATES, MULTIPLY THE GRID COORDINATES SHOWN HEREIN BY THE COORDINATE MULTIPLIER ESTABLISHED FOR THE GRID. THE COORDINATE MULTIPLIER FOR THE WASHOE COUNTY ESTABLISHED COORDINATE FACTOR OF 1.0001071938.

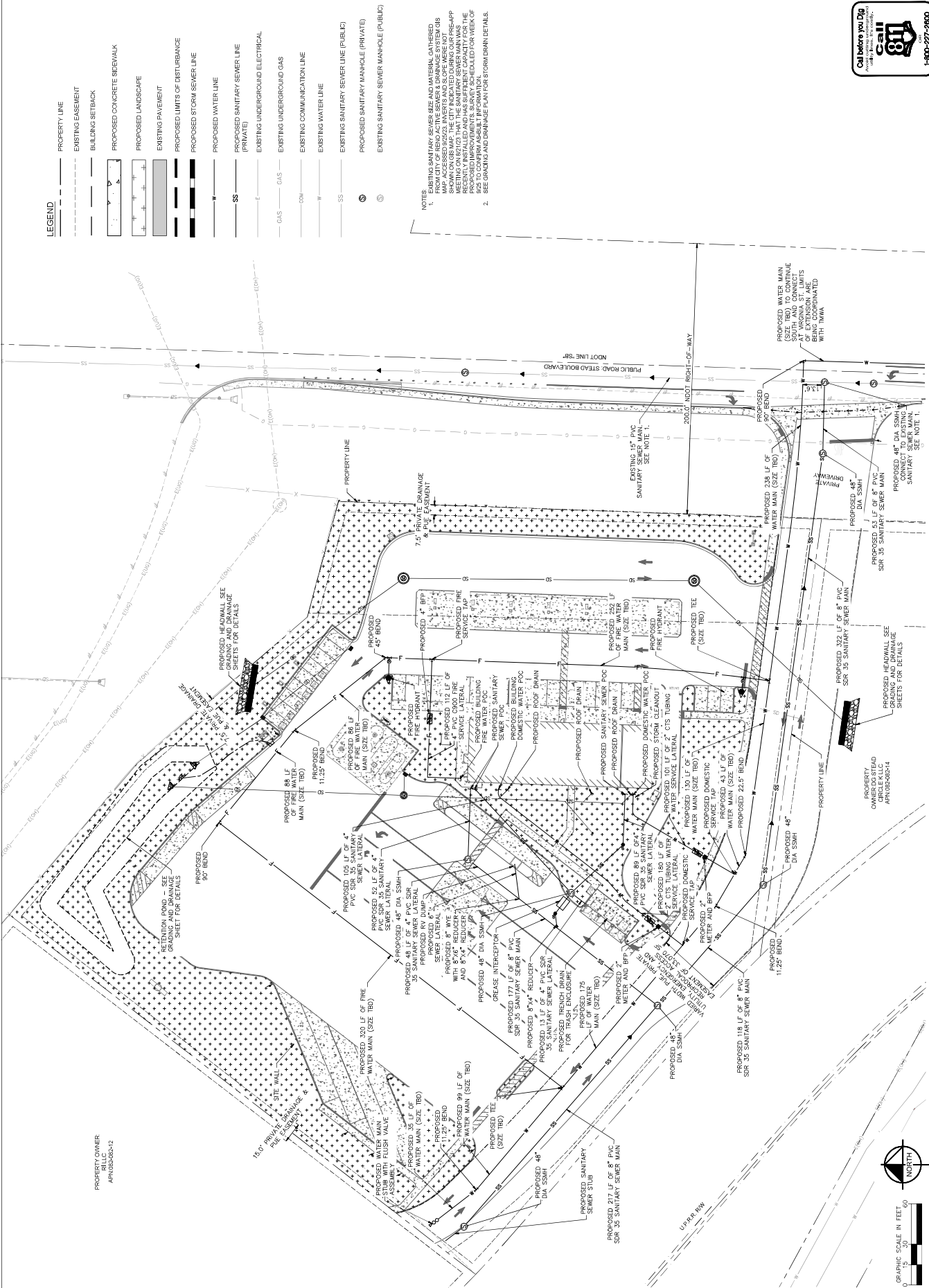
U.S. C&G.S. STEEL DISC IN CONCRETE, FLUSH WITH GROUND. STAMPED: "269 19467" A 4" X 4" WOOD WITNESS POST 1.5' E. LOCATED 97' W. OF THE CENTER OF THE DISC. THE DISC IS LOCATED 0.25 MI. N. OF US-395.

ELEVATION: 5,110.80 (US SURVEY FEET)
1567.80 (METERS)

BASED ON NORTH AMERICAN VERTICAL DATUM OF 1988 (NAVD 88)

PARCEL NUMBER	SITE DATA
PARCEL AREA	02062813
BUILDING AREA	200,688 SQ. FT. (4.6 ACRES)
ZONING	6,263,950 SQ. FT.
PARKING REQUIRED	MIN 200
PARKING PROVIDED	30 (1 PER 220 RESTAURANT + 1 PER 220 SF CONVENIENCE STORE)
ADA PARKING REQUIRED	2
ADA PARKING PROVIDED	2
BICYCLE PARKING REQUIRED	8 (4 PER BIKERACK)
BICYCLE PARKING PROVIDED	100 FEET
QUEVE LENGTH REQUIRED	140 FEET
QUEVE LENGTH PROVIDED	105 FEET FROM CROSSWALK TO CROSSWALK
QUEVE LENGTH REQUIRED	140 FEET FROM PAYMENT WINDOW TO CROSSWALK
DESSEL BUFILE LENGTH	80 FE
BUILDING SETBACKS	10 FT FRONT
LANDSCAPE REQUIREMENTS	20%*
LANDSCAPE PROVIDED	25.2%

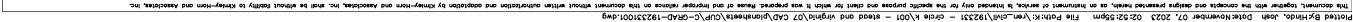


[illegible]

PROPERTY OWNER:
R1 LLC
ADN002-002-12

A graphic scale in feet, showing increments of 0, 15, 30, and 60 feet. To the right of the scale is a north arrow pointing upwards, labeled "NORTH".

This document and design presented herein, as an instrument of service, is intended solely for the specific purpose and intent for which it was prepared. Release of this document without written authorization and adoption by Kiewit-Turner and Associates, Inc. shall be without liability to Kiewit-Turner and Associates.



NO.	REVISIONS	DATE

© 2023 KIMLEY-HORN AND ASSOCIATES, INC.
7900 RANCHOANAHUA HWY SUITE 100, RENO
NEVADA 89521-2004
PHONE: 775-208-1960
WWW.KIMLEY-HORN.COM

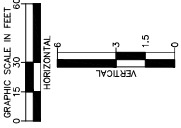


KHA PROJECT	19231001
DATE	9/29/2023
DESIGNED BY	JH
DRAWN BY	BJN
CHECKED BY	BJN

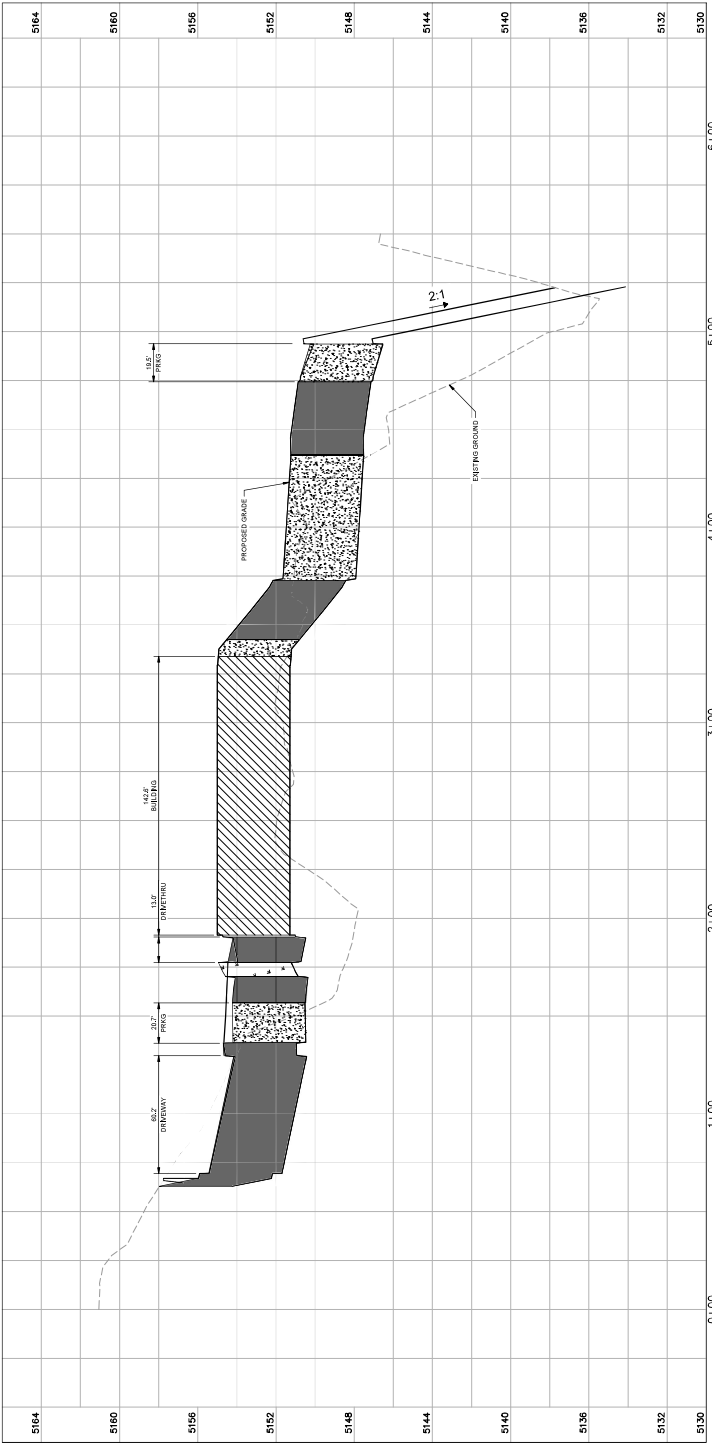
GRADING PLAN SECTIONS

CIRCLE K
AT STEAD BLVD &
VIRGINIA ST
RENO, NEVADA

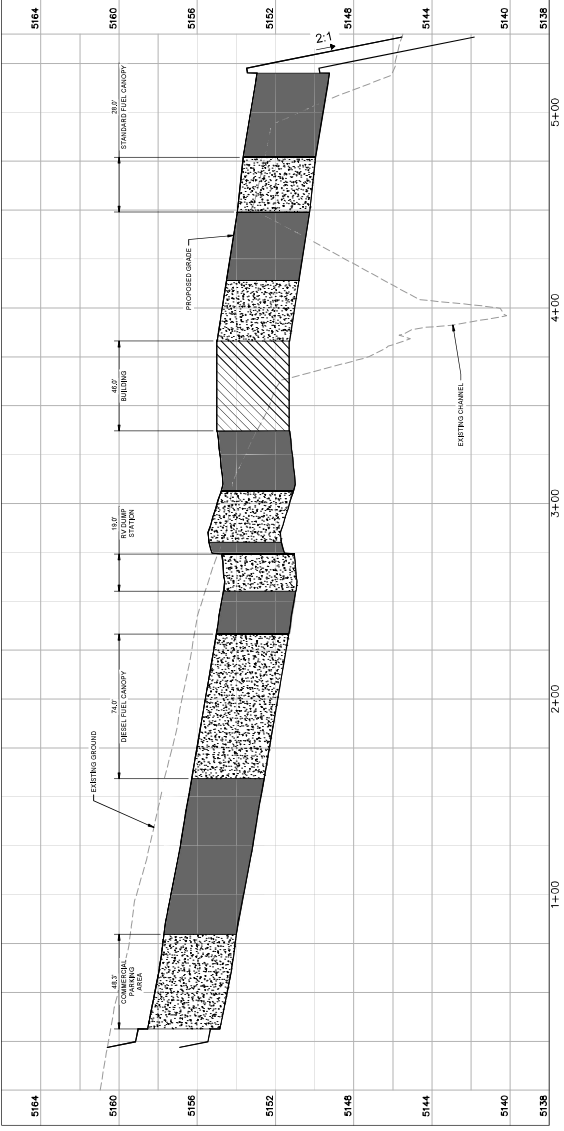
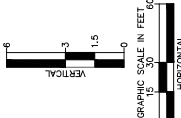
SHEET NUMBER
4 OF 6



- LEGEND**
- PROPOSED BUILDING
 - PROPOSED ASPHALT PAVEMENT
 - PROPOSED LANDSCAPE AREA
 - EXISTING ASPHALT PAVEMENT TO REMAIN
 - PROPOSED PCC CURB AND SIDEWALK










SECTION A



SECTION B

LIGHT FIXTURE LEGEND

SYMBOL	LABEL	QTY	MODEL NUMBER	WATTAGE	MOUNTING TYPE	MOUNTING HEIGHT	LUMENS TOTAL	BUG RATING
	L	9	LE8X-IL-IRK-120V	21 W	CEILING RECESSED	12 FT AFG	1,800	B4-U020
	WP	7	XSP4-IL-AM-NC-IL-40K-F-IL-J-X	71 W	WALL MOUNT	14.5 FT AFG	5,540	B5-U002
	CA-H-G	28	CPY25-C-IL-40K-F-IL-J-X	86 W	CANOPY	15.5 FT AFG	13,700	B4-U001
	CA-H-D	16	CPY25-C-IL-40K-F-IL-J-X	86 W	CANOPY	15.5 FT AFG	13,700	B4-U001
	AS-1	3	CS20-AS-IL-40K-F-AM-L-AM-X	104 W	POLE MOUNT	25 FT AFG	18,100	B5-U053
	AS-1	7	CS20-AS-IL-40K-F-AM-L-AM-X	104 W	POLE MOUNT	25 FT AFG	18,100	B5-U053
	AA-60	4	CS20-AS-IL-40K-F-AM-L-AM-X	208 W	POLE MOUNT	25 FT AFG	32,200	B5-U003

- 1) A LIGHT LOSS FACTOR (LLF) OF 0.8 WAS CONSIDERED IN CALCULATING LUMEN OUTPUT PER FIXTURE
- 2) AN UPLIGHT RATING OF 0 MEETS IESNA CRITERIA FOR A FIXTURE TO BE QUALIFIED AS FULLY SHIELDED. THE SELECTED BUG RATINGS MEET REQUIREMENTS FOR FULLY SHIELDED EXTERIOR LIGHTING PER ILMC 18.04.1304(B)

CALCULATION SUMMARY

PROPERTY LINE	DIESEL CANOPY	GAS CANOPY	PERRINS / DRIVE AISLES
ILLUMINANCE (Fc)	ILLUMINANCE (Fc)	ILLUMINANCE (Fc)	ILLUMINANCE (Fc)
AVERAGE = 0.41	AVERAGE = 64.88	AVERAGE = 48.53	AVERAGE = 3.20
MINIMUM = 0.00	MINIMUM = 43.0	MINIMUM = 36.9	MINIMUM = 0.1
MAXIMUM = 2.9	MAXIMUM = 82.4	MAXIMUM = 63.4	MAXIMUM = 34.2
AVG. MIN = N/A	AVG. MIN = 1.51	AVG. MIN = 1.32	AVG. MIN = 32.00

LUMEN OUTPUT SUMMARY

	ACRES	MAXIMUM LUMENS/ACRE	TOTAL LUMENS ON-SITE
RMC 18.04.1304(C) REQUIREMENT	1.0	100,000	N/A
CIRCLE K SITE	4.825	480,500	349,501

*LIGHT FIXTURES DEDICATED TO FUELING CANOPIES OR AS PART OF BUILDING ARCHITECTURE FACADES WERE NOT INCLUDED AS PART OF THIS CALCULATION

