





# Studiofolia

- Based in Southern California, James Dinh founded the collaborative design practice Studiofolia in 2010 with the simple mission of designing public art spaces that tell untold stories.
- Because the context and requirements of each project are different, my design process is based on an approach rather than a “signature” style. This focus on site-specificity is reflected in the diversity of my built projects in different communities across the country. Each project tells a story unique to its place.
- My projects often serve as tributes to ideas, places, or people. They range from one-day workshops to large-scale, site-specific sculptures.
- I value collaboration, with the belief that the best results occur when there is room for many voices to be heard. Collaboration can be with city officials, community groups, design teams, and other artists.
- Many of my projects have included community engagement, which have involved group workshops and/or working with organizations such as historical societies and archives.





## OF TWO LINEAGES

Little Saigon, Westminster, California, 2017



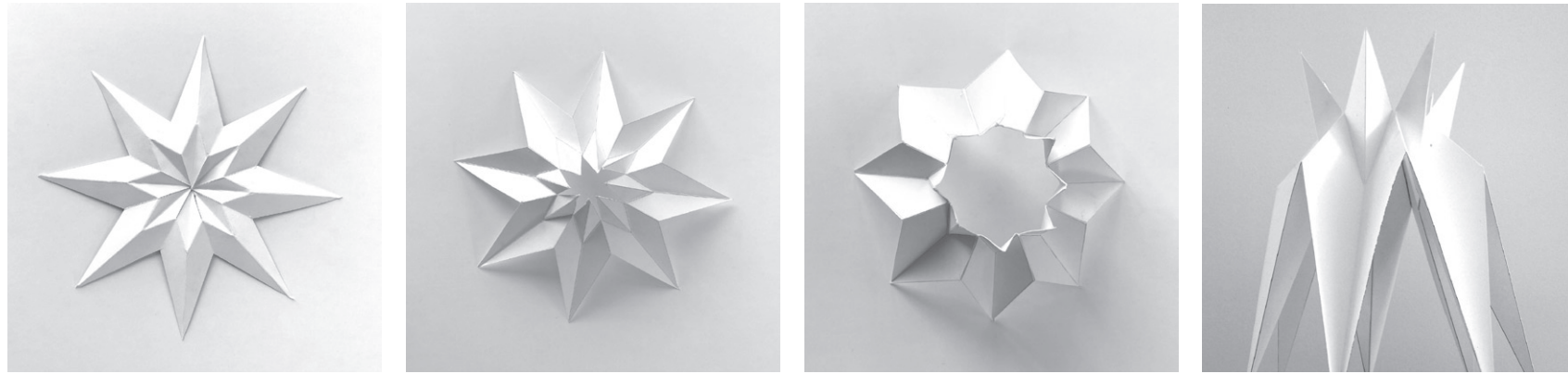
- The artwork is a contemporary re-telling of a traditional origins legend that tells about the 100 ancestral children that gave rise to the Vietnamese people

### COMMUNITY ENGAGEMENT

- I worked with the Oral History Project of UC-Irvine to collect over 100 photos of community members, which were then incorporated into the seating element of the artwork.







- Located in front of the new College of Education, the sculpture uses both sunlight and night-time illumination to symbolize knowledge.

#### COMMUNITY ENGAGEMENT

- I worked with the faculty of the College to generate themes that are often associated with learning, namely transformation, illumination, and effort. I then translated these themes into a physical sculpture.



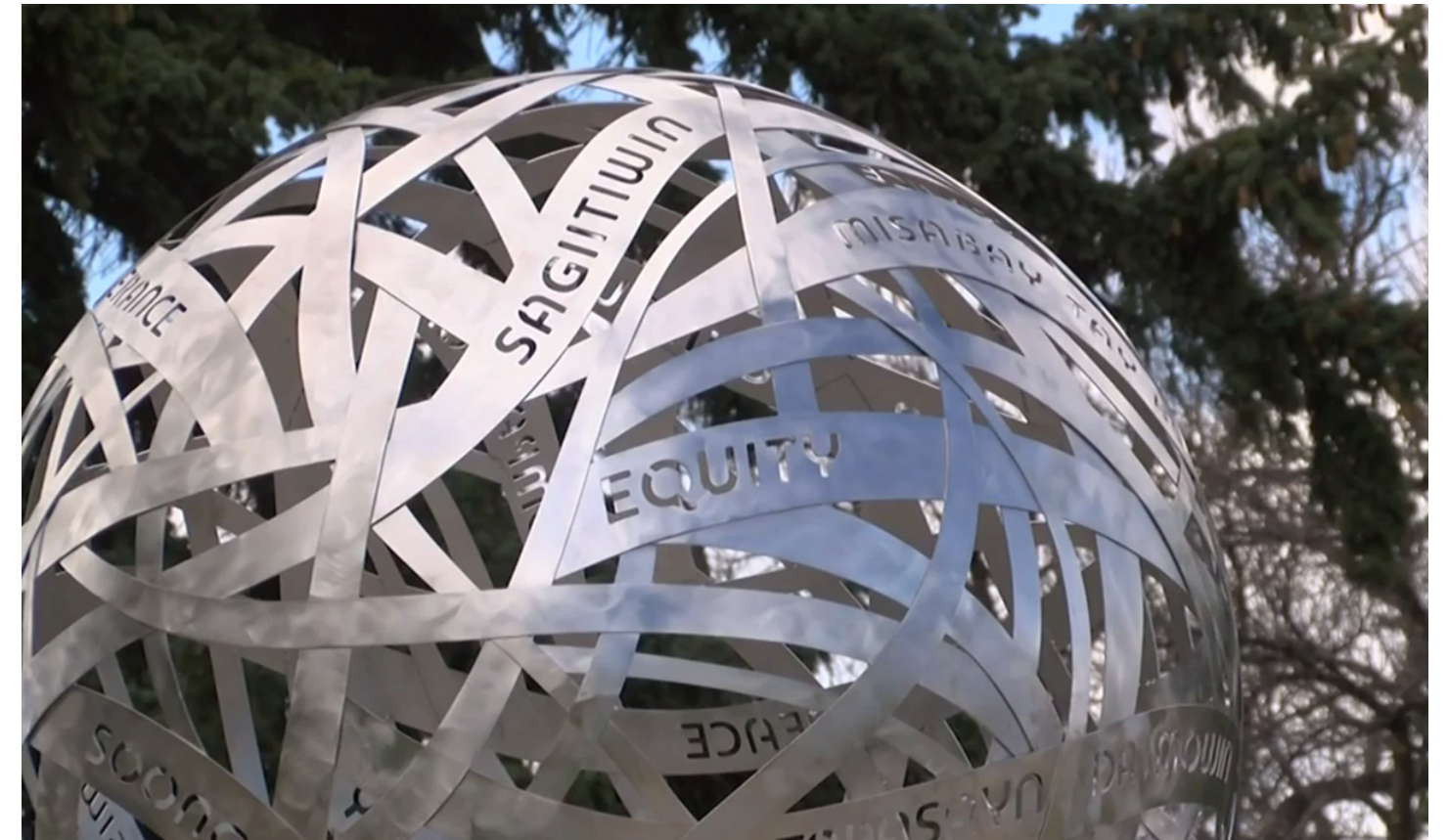
#### T.I.E. (Transformation Illumination Effort) University of Nebraska, Lincoln, 2022







**EQUITY FOUNTAIN**  
Hill Park, Helena, Montana, 2020  
Collaboration with sculptor Michael Stutz



- Replacing a Confederate monument that was removed by the city in 2017, the artwork is intended to remind community members that they must be steadfast like a turning millstone in ensuring that society is guided by values that unite us as opposed to divide us.

#### COMMUNITY ENGAGEMENT

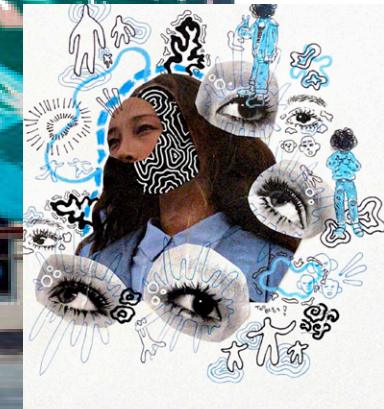
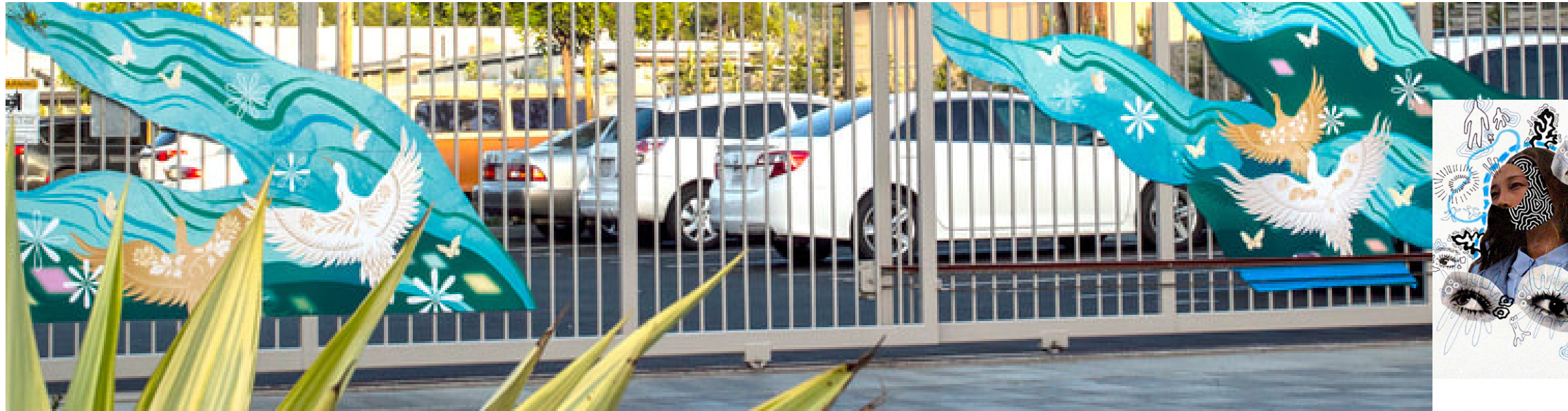
- The non-profit organization—the Equity Fountain Committee—provided a list of community-generated words that capture civic aspirations. The English and Native Chippewa words were “woven” into a sphere to express humanity’s interconnectedness.





## WESTMINSTER CROSSING

Westminster, California, 2022



- An affordable housing development, Westminster Crossing sits on what was once a garment factory. A tapestry seemed a fitting concept for the vehicular gate artworks, which tell the story of how the city is woven together from successive 'migrations' of people who came across oceans and skies.

### COMMUNITY ENGAGEMENT

- The theme and motifs, such as birds, butterflies, and fish were inspired by workshops held with students from the nearby high school. Workshops included oral history, photography, art-making.





## UNION AT THE END OF THE TUNNEL

Metrolink Station, Santa Clarita, California, 2023



- Located at a new commuter train station, the artwork is inspired by the “joining of the rails” historical event in the 19th century, when the northern and southern railroad lines met not far from the current station. Notably, the artwork recognizes the contributions of Chinese workers, whose story has often not been told.

### COMMUNITY ENGAGEMENT

- The images and themes of the artwork were the result of many conversations with community historical societies.

