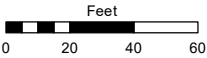
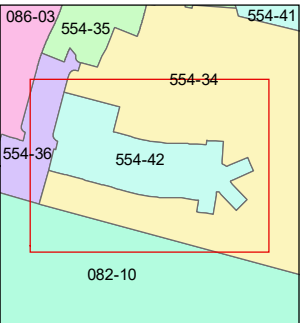
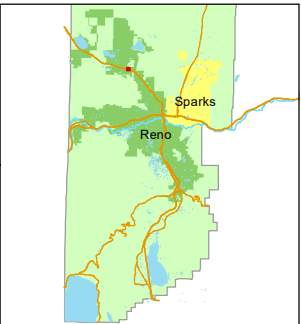


STATE OF NEVADA
WASHOE COUNTY
ASSESSOR'S OFFICE

1001 East Ninth Street, Building D
Reno, Nevada 89512
(775) 328-2231



1 inch = 60 feet



created by: SR 06/08/2020

updated: _____

area previously shown on map(s):

554-34

NOTE: This map was prepared for the use of the Washoe County Assessor for assessment and illustrative purposes only. It does not represent a survey of the premises. No liability is assumed as to the sufficiency or accuracy of the data delineated hereon.

(#5376)

SILVER DOLLAR ESTATES
AREA 3 - PHASE 2

A PLANNED UNIT DEVELOPMENT

PORTION OF NE¼ SECTION 8

T20N - R19E

421

COMMON AREA E

554-421-01
23590 sf

501

554-421-02
2501 sf

502

554-421-03
2501 sf

503

554-421-04
2501 sf

504

554-421-05
2501 sf

505

554-421-06
2501 sf

506

554-421-07
2501 sf

507

554-421-08
2501 sf

508

554-421-09
2501 sf

509

554-421-10
2502 sf

510

554-421-11
2510 sf

511

554-421-12
2530 sf

512

554-421-13
2524 sf

513

554-421-14
2488 sf

514

554-421-15
2513 sf

515

554-421-16
2593 sf

516

554-421-17
2650 sf

517

554-421-18
2380 sf

518

554-421-19
2237 sf

519

554-421-20
2300 sf

520

554-421-21
2383 sf

521

554-421-22
2412 sf

522

554-421-23
2433 sf

(STREET)

554-421-42
26784 sf

NOTE:

501-1 - IDENTIFICATION OF LIMITED COMMON ELEMENT

U.S. HIGHWAY 395