



# Regional Emergency Management & Homeland Security

# Twice Accredited



**2015 & 2020**

# Regional Emergency Operations Center





# Emergency Management & Homeland Security Team:



**Homeland Security**



**Mitigation**



**Grants/Finance/LEPC**



### 13 Hazards

1. Avalanche/Landslide
2. Drought
3. Earthquake
4. Energy Emergency
5. Extreme Weather
6. Flood
7. Hazardous Materials
8. Infectious Disease
9. Radiological Waste Transport
10. Terrorism & Crime
11. Transportation Incident
12. Volcano
13. Wildland Fire

# Emergency Management Mission Areas



PREVENTION



PREPAREDNESS



RESPONSE



RECOVERY



MITIGATION

# 32 Core Capabilities

Prevention		Protection	Mitigation	Response	Recovery					
Planning										
Public Information and Warning										
Operational Coordination										
Intelligence and Information Sharing			Community Resilience	Infrastructure Systems						
Interdiction and Disruption				Critical Transportation	Economic Recovery					
Screening, Search, and Detection						Environmental Response/Health and Safety	Health and Social Services			
Forensics and Attribution	Access Control and Identity Verification		Risk and Disaster Resilience Assessment	Fatality Management Services	Housing					
	Cybersecurity					Fire Management and Suppression	Natural and Cultural Resources			
	Physical Protective Measures									
	Risk Management for Protection Programs and Activities									
	Supply Chain Integrity and Security									
		Threats and Hazards Identification	Logistics and Supply Chain Management	Mass Care Services						
					Mass Search and Rescue Operations	On-scene Security, Protection, and Law Enforcement				
							Operational Communications	Public Health, Healthcare, and Emergency Medical Services		
									Situational Assessment	



## Partners:



# Community Lifelines



Safety and Security



Law Enforcement/Security



Fire Services



Search and Rescue



Government Services



Community Safety



Food, Hydration, Shelter



Food



Hydration



Shelter



Agriculture



Health and Medical



Medical Care



Patient Movement



Public Health



Fatality Management



Medical Supply Chain



Energy (Power & Fuel)



Power (Grid)



Fuel



Communications



Infrastructure



Alerts, Warnings, and Messages



911 and Dispatch



Responder Communications



Finance



Transportation



Highway/Roadway



Mass Transit



Railway



Aviation



Maritime



Hazardous Materials



Facilities



HAZMAT, Pollutants, Contaminants



Water Systems



Potable Water Infrastructure



Wastewater Management



Green = Minimal Impact



Yellow = Moderate Impact



Red = Significant Impact



Grey = Unknown Impact



# Additional Partnership Building

- California Jurisdictions: Placer & El Dorado Counties, Town of Truckee, South Lake Tahoe
- CalOES & NV DEM
- NV County Emergency Management Programs
- Critical Infrastructure Security Administration





# Regional EM Strategic Plan 2020-2025



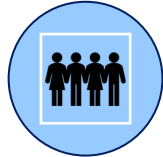
## Goals



Strengthen  
Homeland Security  
Program



Encourage  
Mitigation Strategies



Create a  
Coordinated  
Approach to  
Increasing a Culture  
of Preparedness



Coordinate Regional  
Responding  
Resources



Facilitate Regional  
Recovery Resources



Meet Annual EMAP  
Reporting  
Requirements

# Emergency Management



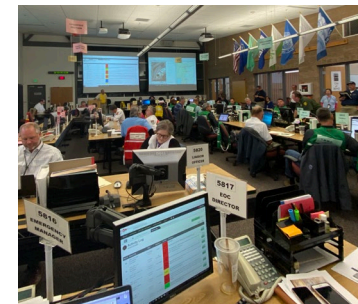
**Planning**



**Operations**



**Equipment**



**Training**



**Exercises**



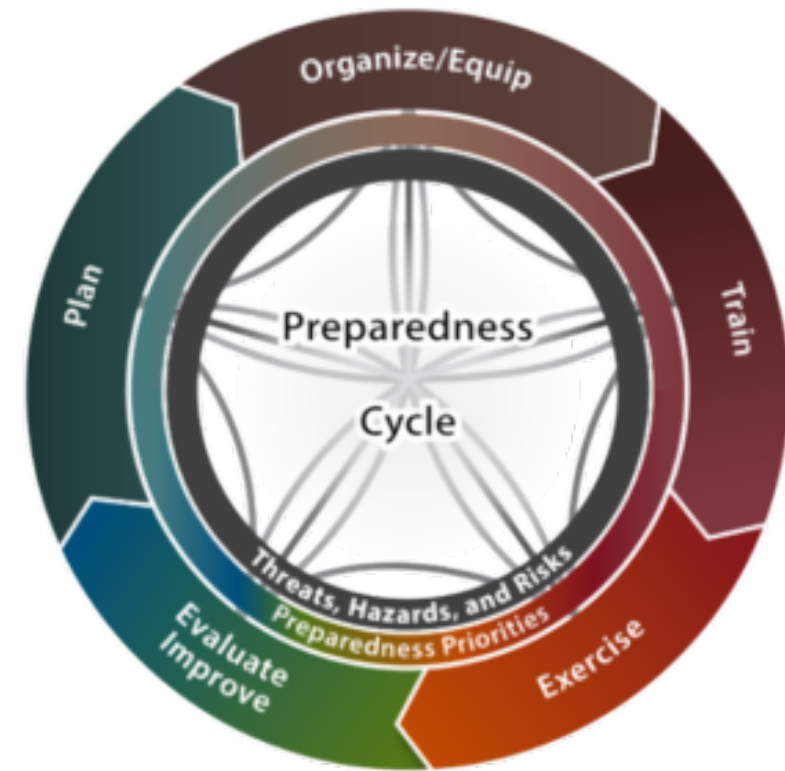
# Regional Integrated Preparedness Plan (IPP)



## Overview

### Purpose:

- Priorities & Activities for ALL
- Incorporate all elements of the integrated preparedness cycle
- Identify GAPS
- Improve regional capabilities



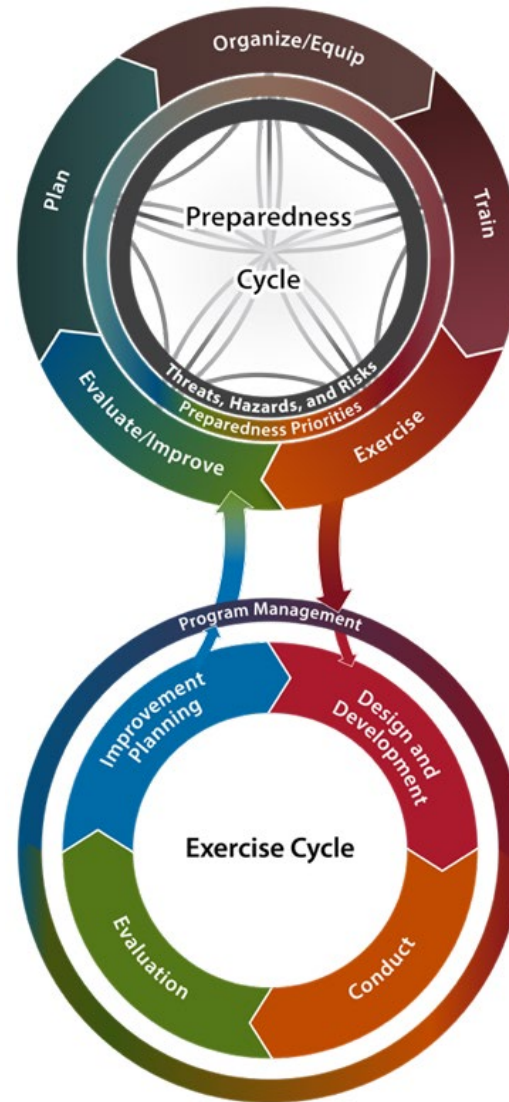
# Exercise Cycle

- Continuous Improvement = #ForeverGoal
- Striving for the highest level of service & support in blue and grey skies





## All Together



### Regional Priorities

1. Operational Coordination
2. Operational Communication
3. Mass Care Services
4. Community Resilience
5. Fatality Management



## How We Get There



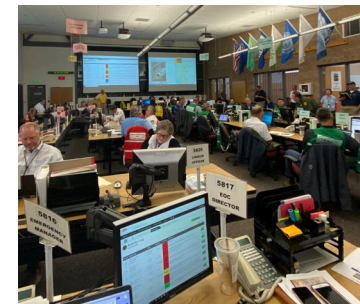
**Planning**



**Operations**



**Equipment**



**Training**



**Exercises**

# 1. Operational Coordination

- Planning:
  - REOP
  - Situation Report SOPs
  - Policy Group Communication SOPs
  - Evacuation Study
- Training
  - Creation of REOC Basics Class
  - FEMA EOC Skillset Curriculum
  - G191 ICS EOC Interface
  - Lifelines Training
- Organization & Equipment
  - REOC Community Outreach Coord.
  - Events Operation Center (EvOC)
- Exercises
  - Alternate REOC Exercise
  - EvOC TTXs
  - RTAA TTX
  - The Great Shakeout
  - NNPH Earthquake Exercise



## 2. Operational Communication

- Planning:
  - REOP
  - Situation Report SOPs
  - Policy Group Communication SOPs
- Organization & Equipment
  - REOC – Lifelines
  - REOC – ISM Positions
  - Shelter Trailers
  - VOAD
  - Emergency Shelter Council
- Training
  - American Red Cross Shelter Training
  - Mass Care Classes
  - ISM Training
  - EvOC Training
- Exercises
  - Shelter Operations Exercise
  - NNPH Earthquake Exercise
  - RTAA TTX

### 3. Mass Care Services

- Planning:
  - REOP
  - Mass Care Plan Adoption
  - Mass Care Catalog – New Sites
- Organization & Equipment
  - REOC Resource Support Section
  - REOC Emergency Shelter Council
  - Shelter Trailers
- Training
  - American Red Cross Shelter Training
  - Mass Care Training Program Implementation
- Exercises
  - Shelter Operations Exercise
  - Neighborhood Wildland Fire TTX

## 4. Community Resilience

- Planning:
  - Regional Hazard Mitigation Plan
  - Regional Flood Response Action Plan
  - Evacuation Study
- Organization & Equipment
  - REOC ISM Staffing – 3 Deep
  - Community Lifeline Groups
  - Truckee River Flood Management Agency
  - CSD & Public Works Departments
  - UNR Seismology Lab
- Training
  - FEMA Preparedness Classes
  - FEMA Mitigation Classes
- Exercises
  - Grid Full-scale Exercise—2025
  - NNPH Earthquake Exercise – 2025
  - Events Operations Center (EvOC)  
TTX - Annual

## 5. Fatality Management Services

- Planning
  - REOP
  - Mass Fatality Management Plan
  - Family Assistance Center (FAC) Annex
- Organization & Equipment
  - REOC Sections
  - FAC Organization & Staffing
  - FAC Boxes
  - WebEOC Patient Tracking Boards
- Training
  - NTSB Family Assistance Center Training
  - Washoe County FAC Training
  - FEMA Overview of Mass Care/Emergency Assistance
- Exercises
  - RTAA TTX
  - FAC TTX



# Preparedness

- Community Tabling at Events
- Presentations at CABs and Neighborhood Associations
- Evacuation Video Creation
- Proclamations
- Media Messaging
- Personal Preparedness Focus
- Go-Bags for Seniors
- Community Forums



# Response



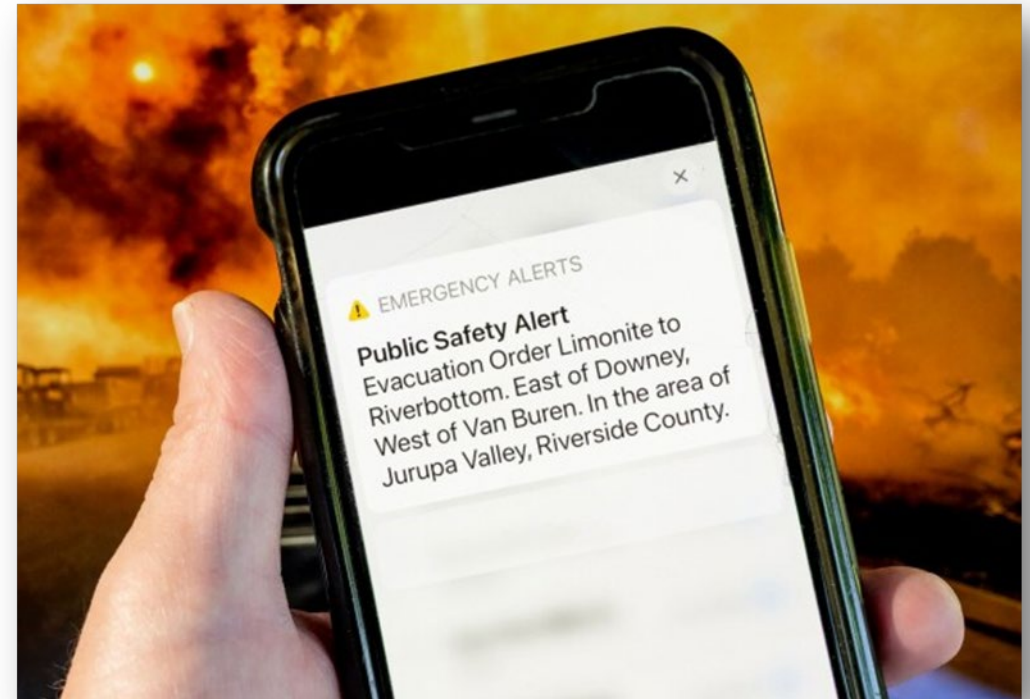
### Flow of Initial Events





# Alerts

- Information includes:
  - Type of threat
  - Area being evacuated
  - Where to go
    - Evacuation point or shelter location
- How to find information
  - Traditional and social media
  - [www.Emergencywashoe.com](http://www.Emergencywashoe.com)
  - [Perimetermap.com](http://Perimetermap.com)



# Alerting Tool (Rave – Smart 911)

- Allows individuals to choose the method they prefer to be notified.
- WCEM staff draws a polygon larger than the evacuation area and sends the following:
  - EAS
  - WEA
  - Social Media
  - Email
  - Text
  - Voicemail



### Always Be Notified

Sign up for Washoe County emergency alerts and receive important notifications via text message.

  
TRAFFIC UPDATES

  
EMERGENCY NOTIFICATIONS

  
SHELTER LOCATIONS



This service is provided by Washoe County Emergency Management at no cost to the public; however, message and data rates may apply depending on your provider and phone services. Please refer to your mobile phone's service plan for more information. Visit <https://www.smart911.com/> to create your free safety profile.

POWERED BY:  
 Smart911®



Verizon  
12:01  
Monday, July 29

Choose to Stay Informed.  
Thank you for signing up for WASHOE alerts to stay up to date.

Swipe up to open



**PERIMETER**



## Emergency Management: Response



## 2023-2024 PARTNERS

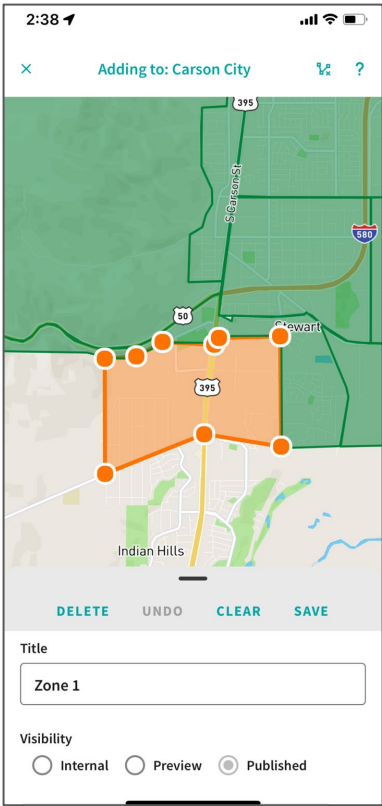


## 2025 ADDITIONS

# Emergency Management: Response

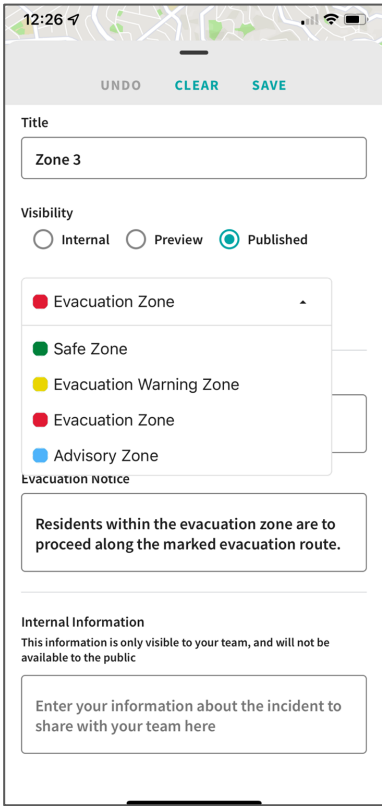
## Pre-planning

Testing and training with first responders.



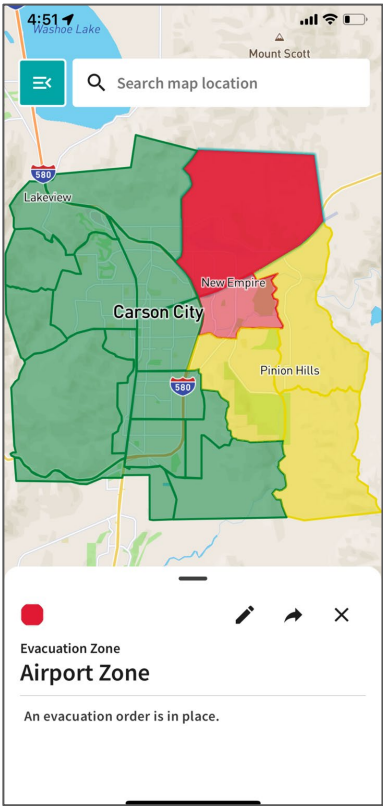
## Real-time collaboration

Coordinate evacuations with other agencies in real-time.

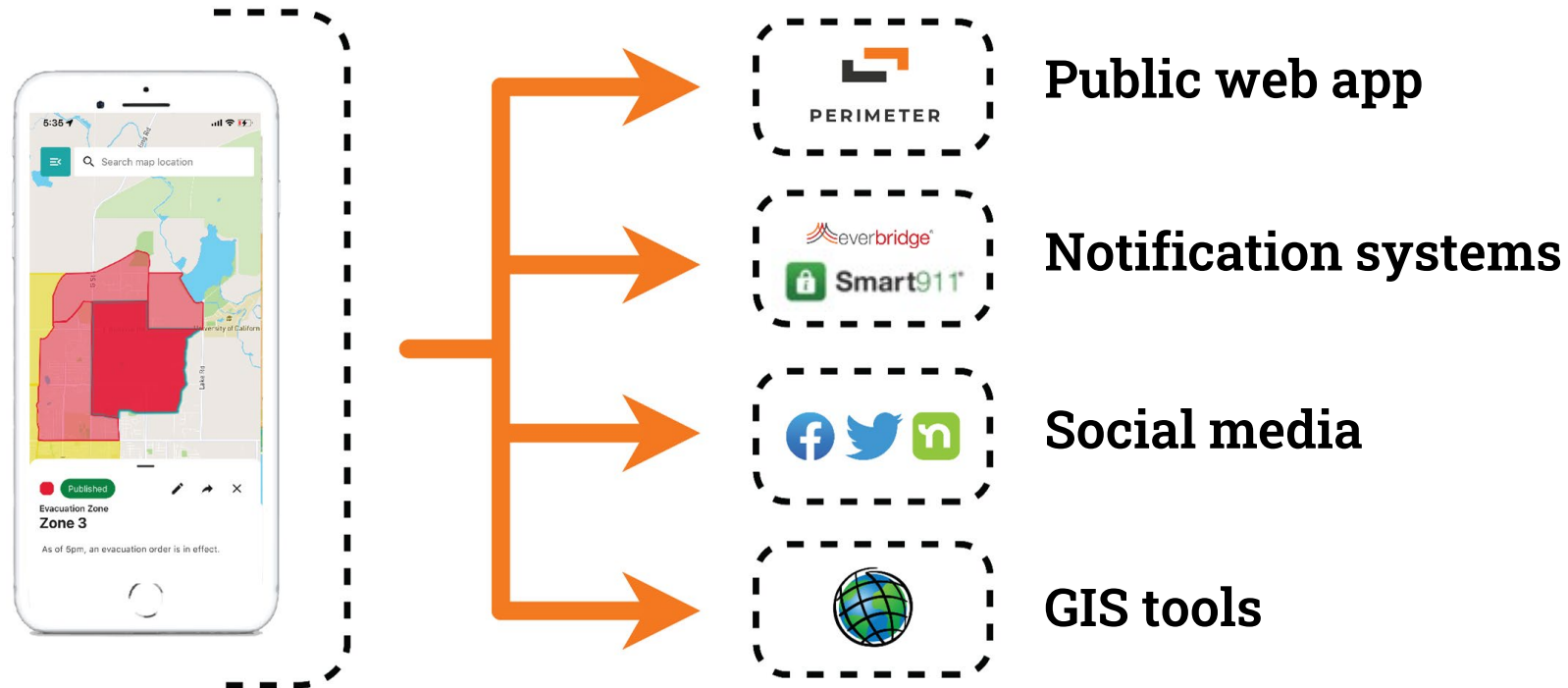


## Alert the public

Publish evacuation areas and instructions to the public.



# Cross-channel communication





# Operational Responsibilities

- Resource support
- Communication
- Mass Care
  - Sheltering
  - Feeding
  - Animals
- Reunification
- Volunteer & Donations Management
- Damage Assessment & Notification





# Recovery

**FIRST ALERT FIRE**



**PINEHAVEN FIRE DAY AFTER**  
1,200 ACRES, FIVE HOMES BURNED

**KOL**  
news

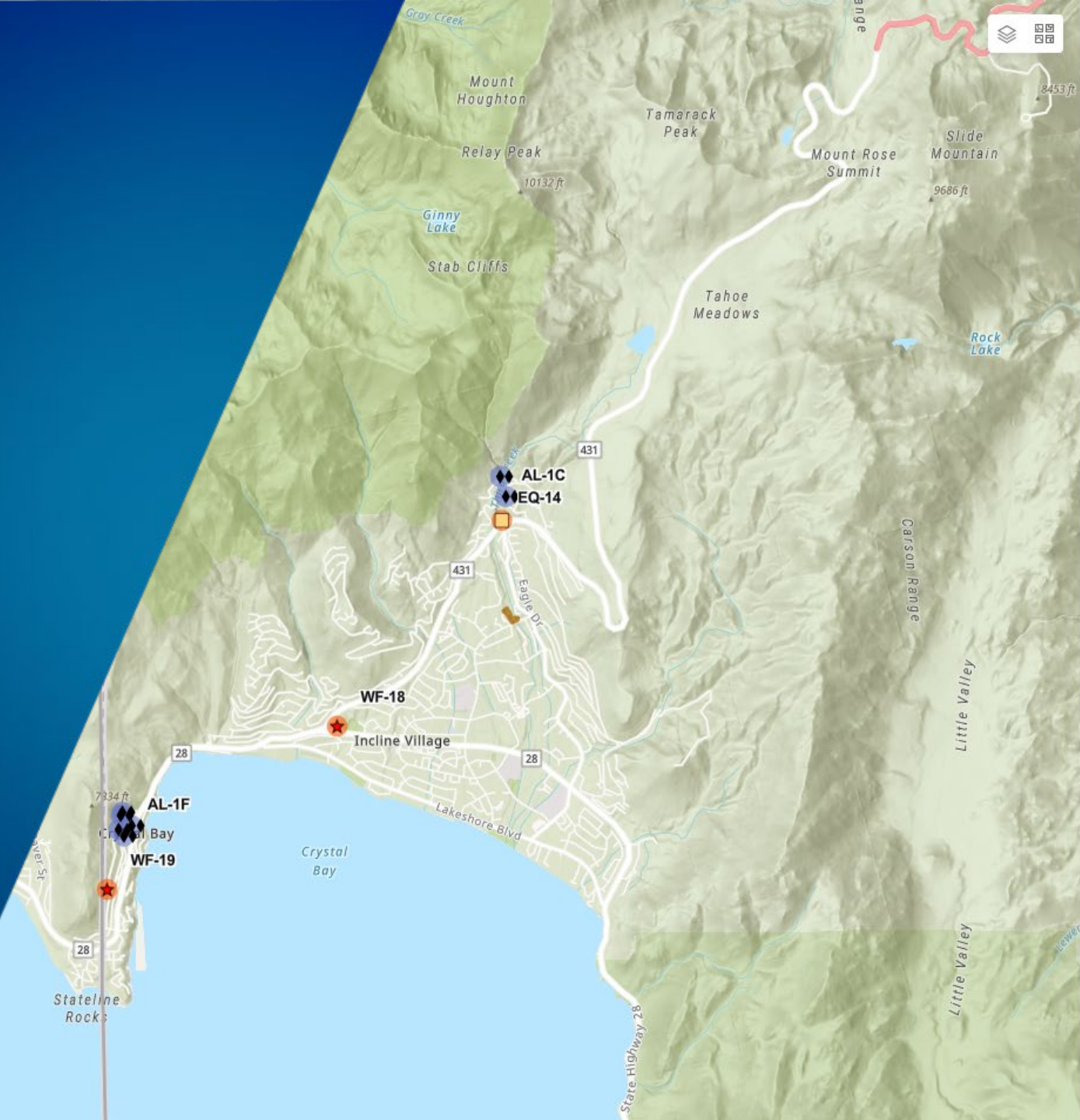
# Challenges

- Size & Scope of Incident
- Short vs. Long Term
- Housing
- Resources
- Economic Loss
- New normal





# Mitigation Plan and Program



## Hazard Mitigation

### Hazard Type

- FLOODING
- EARTHQUAKE
- AVAILANCE AND LANDSLIDE
- ENERGY EMERGENCY
- MULTI-HAZARD
- WILDLAND FIRE
- CRIMINAL ACTS AND TERRORISM
- TRANSPORTATION INCIDENT

### Agency

- RENO
- MULTIPLE
- SPARKS
- WC
- NNPH
- TMWA
- TRFMA
- RSIC
- NLTFPD
- NDOT
- TMFPD

### Hazard Mitigation Road Area

- EARTHQUAKE
- FLOODING
- WILDLAND FIRE

### Hazard Mitigation Area

- EARTHQUAKE
- FLOODING
- TRANSPORTATION INCIDENT



## Mitigation

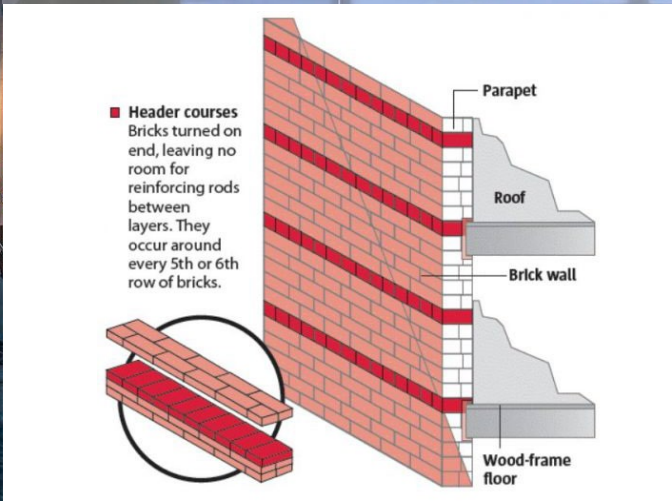
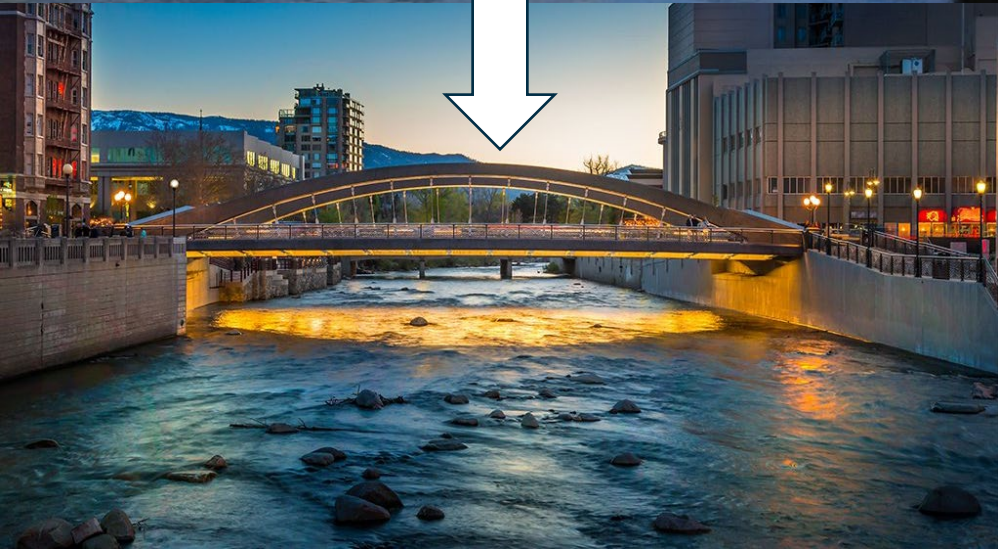
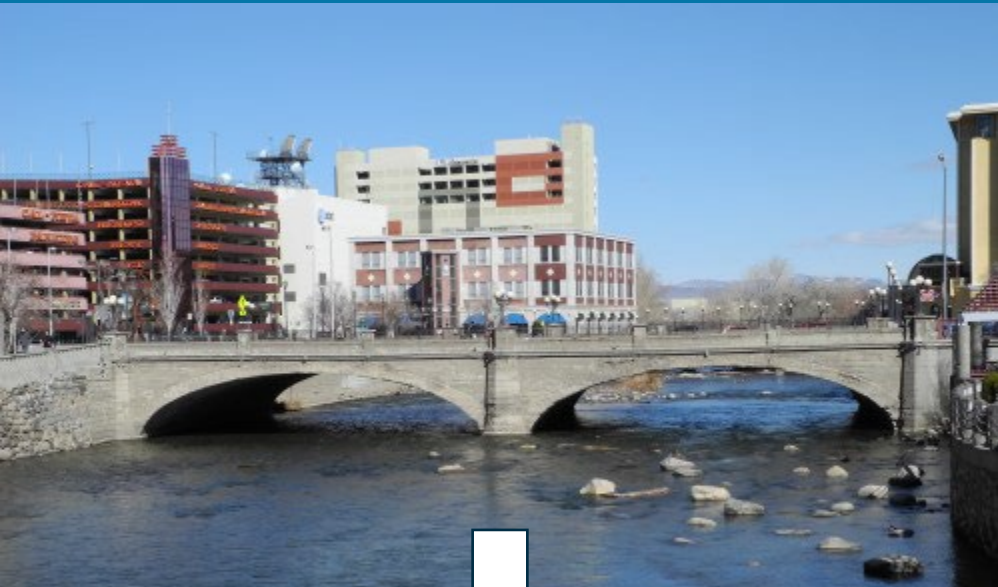




### 13 Hazards

1. Avalanche/Landslide
2. Drought
3. Earthquake
4. Energy Emergency
5. Extreme Weather
6. Flood
7. Hazardous Materials
8. Infectious Disease
9. Radiological Waste Transport
10. Terrorism & Crime
11. Transportation Incident
12. Volcano
13. Wildland Fire

# Mitigation





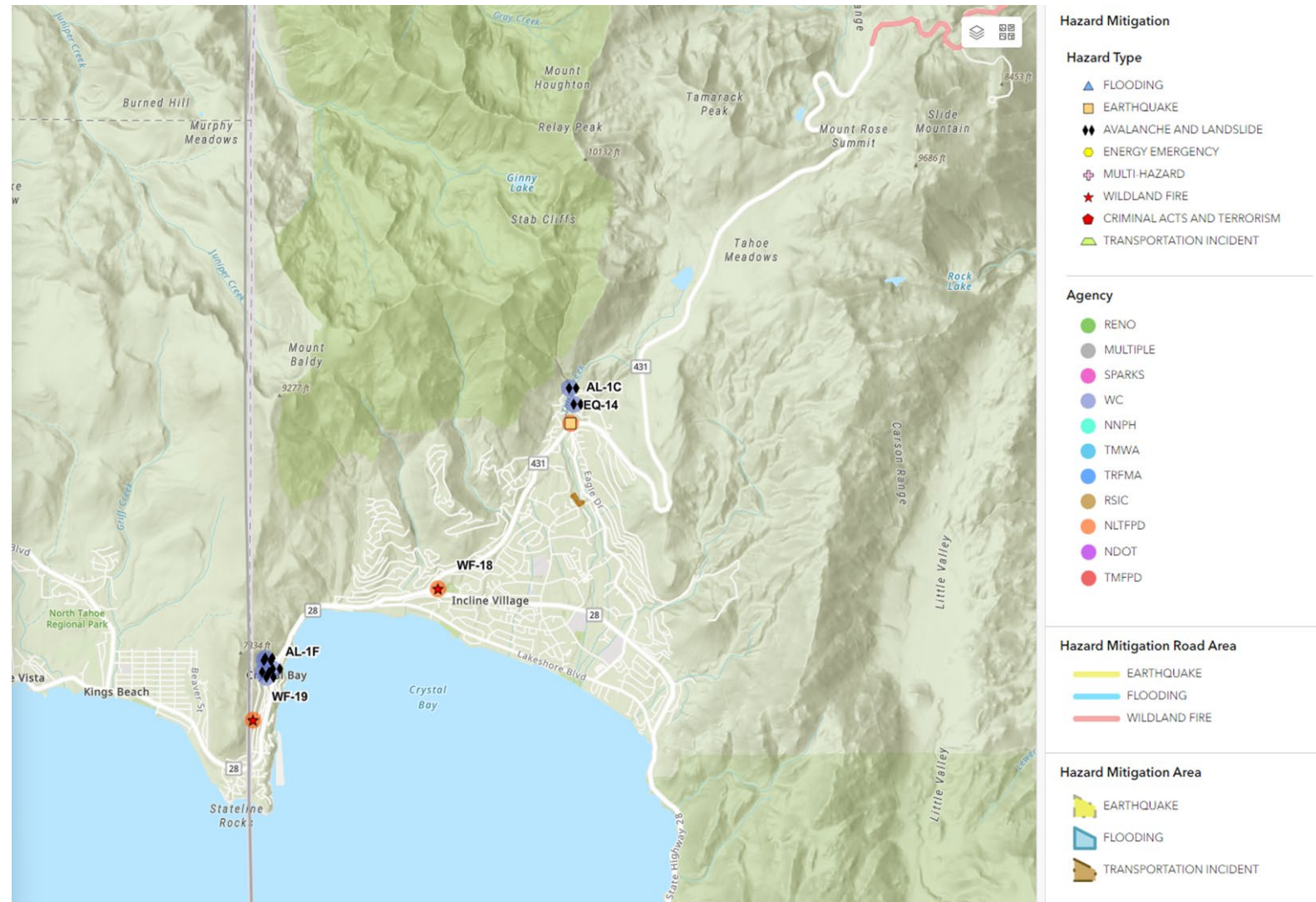
# Fuels Mitigation





# Mitigation

## Program





# Additional Efforts



## ROAD to RESILIENCE



### 2023

#### Launch & Exercise

1. Perimeter Map
  - Launched 3/17/23
2. Full-Scale Evacuation Exercise
  - 8/16/23
3. Community Forum
  - 10/18/23

1

2

3



### 2024

#### Working Groups

4. Tahoe Emergency Managers Group
  - Formed January 2024
5. Event Operations Group
  - Started for Red, White & Tahoe Blue July 2024

4

5

6

7

8

#### Evacuation Information

6. Multi-language Evacuation Video
  - Completed 1/31/24
7. Dashboard of Regional Agencies
  - Launched 6/3/24
8. Emergency Alerts
  - Completion date 9/20/24



### 2025

#### Evacuation Study & Report

9. Evacuation Study & Report
  - Assess the top 5 areas of concern
10. Implementation of Recommendations

9

10



# Elected Officials



# How Elected Officials Can Help

### Know:

- The Who, What, Why, & How of Emergency Management (EM)
- How to reach out to EM with questions
- Help constituents understand personal preparedness
- Help constituents understand community planning & regulations regarding infrastructure





# How Elected Officials Can Help

### Know:

- Your authorities for:
  - Emergency Plans
  - Proclaiming a state of emergency
  - Requesting assistance from other jurisdictions/the state
  - Disseminating information & warnings
  - Imposing restrictions
  - Ordering evacuations & restricting reentry
- Core Regional Plans
- Available Training



# Thank you

