

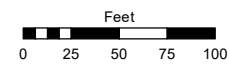
**(#5510)**  
**MILITARY 8**  
PORTION OF NW 1/4 SECTION 4  
T20N - R19E

Assessor's Map Number

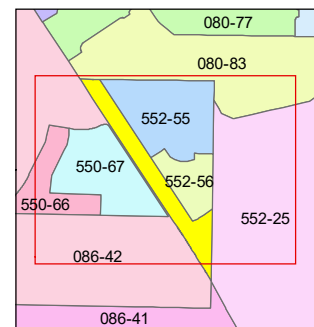
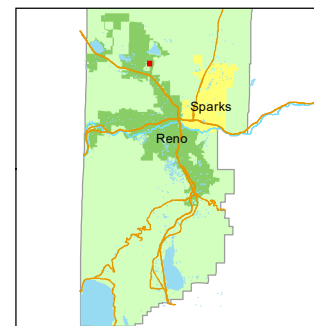
**552-54**

STATE OF NEVADA  
**WASHOE COUNTY**  
**ASSESSOR'S OFFICE**

1001 East Ninth Street, Building D  
Reno, Nevada 89512  
(775) 328-2231



1 inch = 100 feet



created by: JRA 10/21/2022

updated: \_\_\_\_\_

area previously shown on map(s):

552-25

NOTE: This map was prepared for the use of the Washoe County Assessor for assessment and illustrative purposes only. It does not represent a survey of the premises. No liability is assumed as to the sufficiency or accuracy of the data delineated hereon.