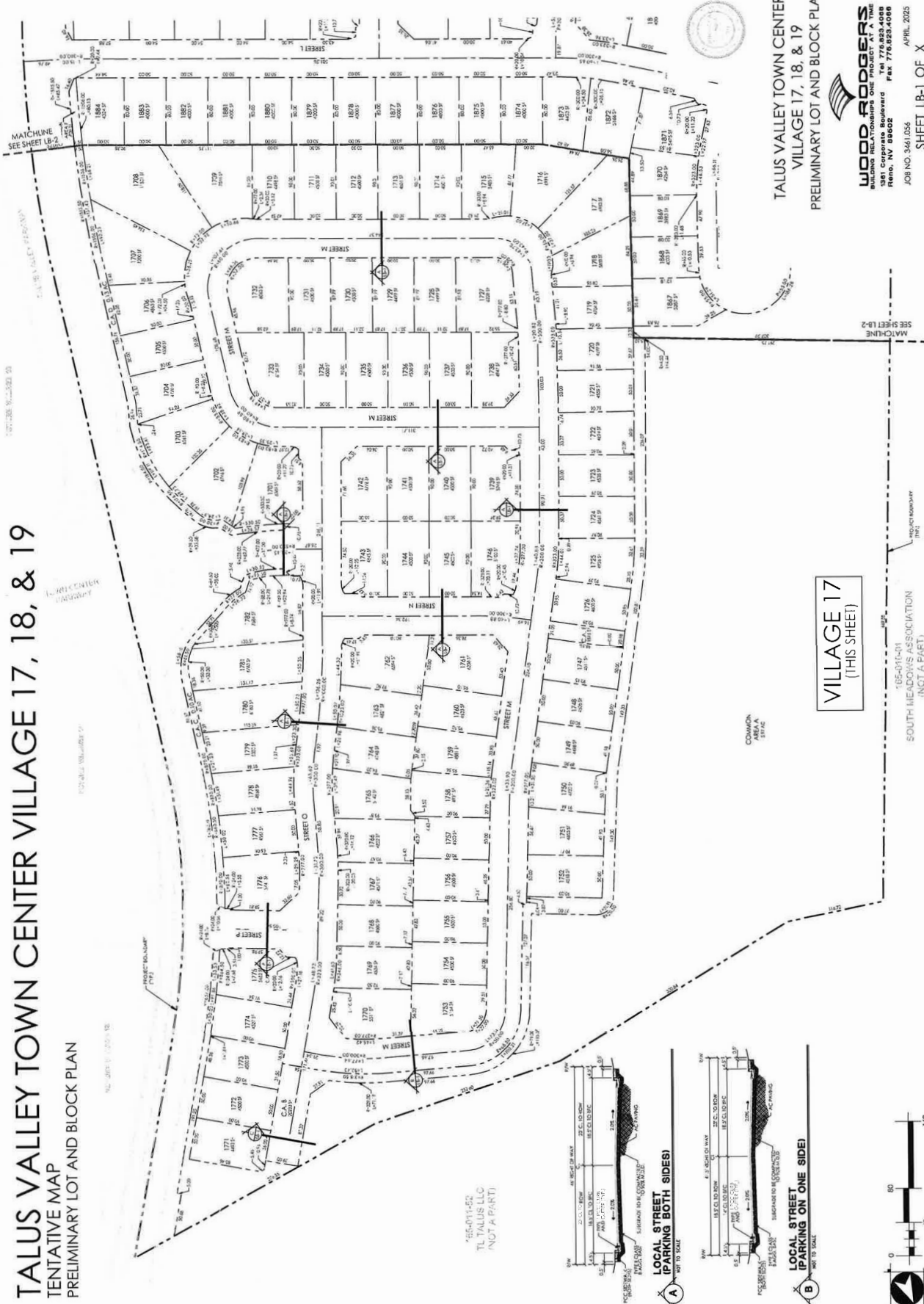


TALUS VALLEY TOWN CENTER VILLAGE 17, 18, & 19

TENTATIVE MAP
PRELIMINARY LOT AND BLOCK PLAN



TALUS VALLEY TOWN CENTER
VILLAGE 17, 18, & 19
PRELIMINARY LOT AND BLOCK PLAN

WOOD RODGERS
1381 Corporate Boulevard
Pawcatuck, CT 06259
Tel: 860.276.0000
Fax: 860.276.0000
JOB NO. 3461056
APRIL, 2025

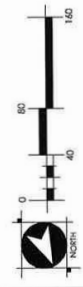
SHEET LB-1 OF X

VILLAGE 17
(THIS SHEET)

105-011-01
SOUTH MEADOWS ASSOCIATION
(NOT A PART)

LOCAL STREET
(PARKING BOTH SIDES)

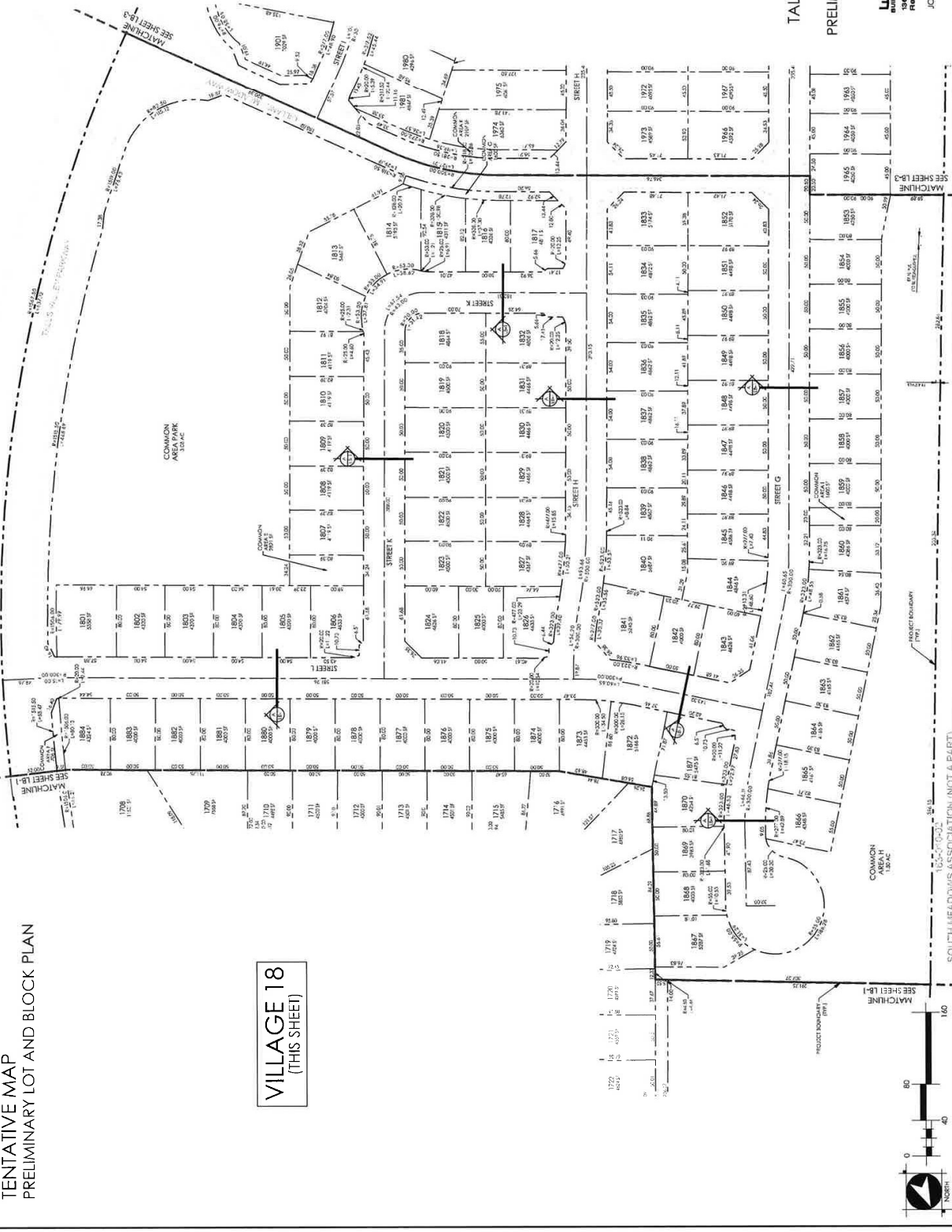
LOCAL STREET
(PARKING ON ONE SIDE)



TALUS VALLEY TOWN CENTER VILLAGE 17, 18, & 19

TENTATIVE MAP
PRELIMINARY LOT AND BLOCK PLAN

VILLAGE 18
(THIS SHEET)



TALUS VALLEY TOWN CENTER
VILLAGE 17, 18, & 19
PRELIMINARY LOT AND BLOCK PLAN



WOOD RODGERS
BUILDING RELATIONS ONE PROJECT AT A TIME
1381 Corporate Boulevard
Reno, NV 89502
Tel 775.823.4008
Fax 775.823.4006
JOB NO. 3461.056
APRIL 2023

SHEET LB-2 OF X

TALUS VALLEY TOWN CENTER VILLAGE 17, 18, & 19

TENTATIVE MAP
PRELIMINARY LOT AND BLOCK PLAN

VILLAGE 19
(THIS SHEET)



TALUS VALLEY TOWN CENTER
VILLAGE 17, 18, & 19
PRELIMINARY LOT AND BLOCK PLAN



WOOD ROBBERS
SOUTH MEADOWS ASSOCIATION, INC.
1381 Corporate Boulevard
Reno, NV 89502
Tel 775.823.4088
Fax 775.823.4086
JOB NO. 3461 DSA
APRIL 2025

SHEET LB-3 OF X


TENTATIVE MAP
PRELIMINARY LANDSCAPE PLAN



VILLAGE 18
(THIS SHEET)

[illegible]

TALUS VALLEY TOWN CENTER
VILLAGE 17, 18, & 19
PRELIMINARY LANDSCAPE PLAN



WOODWARD-CLYDE

1361 Corporate Boulevard
Reno, NV 89502
Tel 776.823.4088
Fax 776.823.4088

SHEET L-2 OF 14

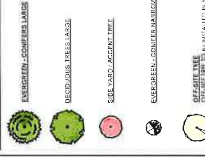
VILLAGE 19
(THIS SHEET)



TALUS VALLEY TOWN CENTER VILLAGE 17, 18, & 19

TENTATIVE MAP PRELIMINARY LANDSCAPE PLAN

CONCEPT PLANT SCHEDULE



CONCEPT PLANT SCHEDULE

CONCEPT PLANT SCHEDULE

LANDSCAPE SITE DATA

LANDSCAPE SITE DATA

LANDSCAPE SITE DATA

LANDSCAPE SITE DATA

LANDSCAPE SITE DATA

LANDSCAPE SITE DATA

LANDSCAPE SITE DATA

LANDSCAPE SITE DATA

LANDSCAPE SITE DATA

LANDSCAPE SITE DATA

LANDSCAPE SITE DATA

LANDSCAPE SITE DATA

LANDSCAPE SITE DATA

LANDSCAPE SITE DATA

LANDSCAPE SITE DATA

LANDSCAPE SITE DATA

LANDSCAPE SITE DATA

LANDSCAPE SITE DATA

LANDSCAPE SITE DATA

LANDSCAPE SITE DATA

LANDSCAPE SITE DATA

LANDSCAPE SITE DATA

LANDSCAPE SITE DATA

LANDSCAPE SITE DATA

LANDSCAPE SITE DATA

LANDSCAPE SITE DATA

LANDSCAPE SITE DATA

LANDSCAPE SITE DATA

LANDSCAPE SITE DATA

LANDSCAPE SITE DATA

LANDSCAPE SITE DATA

LANDSCAPE SITE DATA

LANDSCAPE SITE DATA

LANDSCAPE SITE DATA

LANDSCAPE SITE DATA

LANDSCAPE SITE DATA

LANDSCAPE SITE DATA

LANDSCAPE SITE DATA

LANDSCAPE SITE DATA

LANDSCAPE SITE DATA

LANDSCAPE SITE DATA

LANDSCAPE SITE DATA

LANDSCAPE SITE DATA

LANDSCAPE SITE DATA

LANDSCAPE SITE DATA

LANDSCAPE SITE DATA

LANDSCAPE SITE DATA

PRELIMINARY LANDSCAPE PLAN

PRELIMINARY LANDSCAPE PLAN

PRELIMINARY LANDSCAPE PLAN

PRELIMINARY LANDSCAPE PLAN

PRELIMINARY LANDSCAPE PLAN

PRELIMINARY LANDSCAPE PLAN

PRELIMINARY LANDSCAPE PLAN

PRELIMINARY LANDSCAPE PLAN

PRELIMINARY LANDSCAPE PLAN

PRELIMINARY LANDSCAPE PLAN

PRELIMINARY LANDSCAPE PLAN

PRELIMINARY LANDSCAPE PLAN

PRELIMINARY LANDSCAPE PLAN

PRELIMINARY LANDSCAPE PLAN

PRELIMINARY LANDSCAPE PLAN

PRELIMINARY LANDSCAPE PLAN

PRELIMINARY LANDSCAPE PLAN

PRELIMINARY LANDSCAPE PLAN

PRELIMINARY LANDSCAPE PLAN

PRELIMINARY LANDSCAPE PLAN

PRELIMINARY LANDSCAPE PLAN

PRELIMINARY LANDSCAPE PLAN

PRELIMINARY LANDSCAPE PLAN

PRELIMINARY LANDSCAPE PLAN

PRELIMINARY LANDSCAPE PLAN

PRELIMINARY LANDSCAPE PLAN

PRELIMINARY LANDSCAPE PLAN

PRELIMINARY LANDSCAPE PLAN

PRELIMINARY LANDSCAPE PLAN

PRELIMINARY LANDSCAPE PLAN

PRELIMINARY LANDSCAPE PLAN

PRELIMINARY LANDSCAPE PLAN

PRELIMINARY LANDSCAPE PLAN

PRELIMINARY LANDSCAPE PLAN

PRELIMINARY LANDSCAPE PLAN

PRELIMINARY LANDSCAPE PLAN

PRELIMINARY LANDSCAPE PLAN

PRELIMINARY LANDSCAPE PLAN



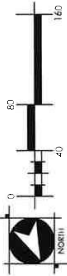
TALUS VALLEY TOWN CENTER
VILLAGE 17, 18, & 19
PRELIMINARY LANDSCAPE PLAN



WOOD RODGERS
LANDSCAPE ARCHITECTS
1581 Corporate Boulevard
Reno, NV 89502
Tel 775.853.4088
Fax 775.853.4089
JCB NO.344.1026
APRIL 2025

SHEET L-1 OF 14

VILLAGE 17
(THIS SHEET)



153-011-52
TALUS VALLEY TOWN CENTER
VILLAGE 17, 18, & 19
PRELIMINARY LANDSCAPE PLAN