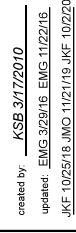
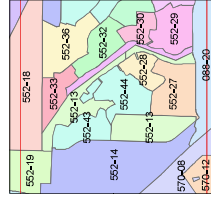
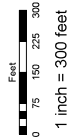


Assessor's Map Number
552-13

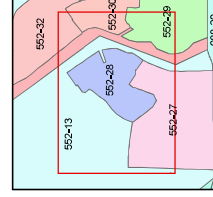
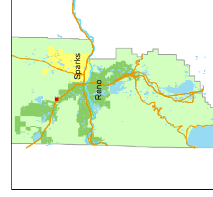
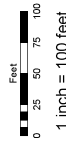
STATE OF NEVADA



NOTE: This map was prepared for the use of the Washoe County Assessor for assessment and illustrative purposes only. It does not represent a survey of the premises. No liability is assumed as to the sufficiency or accuracy of the data delineated hereon.

Assessor's Map Number
552-28

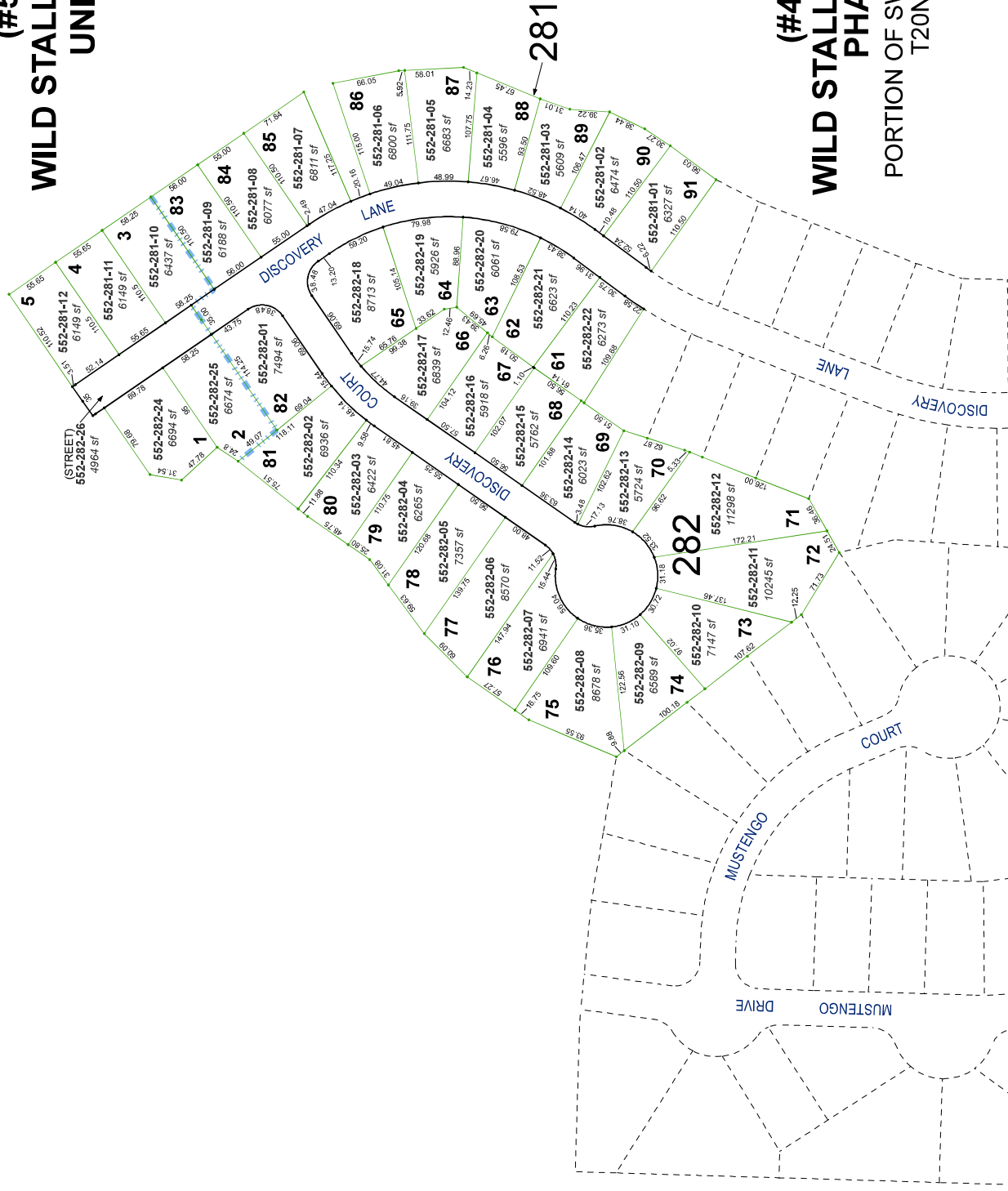
STATE OF NEVADA
WASHOE COUNTY
ASSESSOR'S OFFICE
Michael E. Clark, Assessor
1001 East Ninth Street
Building D
Reno, NV 89512
(775) 329-2231



created by: KSB 3/21/2011
last updated: EMS 3/29/16
area previously shown on map(s)
552-13

NOTE: This map was prepared for the use of the Washoe County Assessor for assessment and illustrative purposes only. It does not represent a warranty of accuracy or a guarantee of title, and is not to be relied upon for legal purposes. The Assessor is not responsible for the sufficiency or accuracy of the data delineated herein.

(#5154)
WILD STALLION ESTATES
UNIT #4A



(#4570)
WILD STALLION ESTATES
PHASE 1
PORION OF SW 1/4 SECTION 10
T20N - R19E